

Report Reference:

4144TA

Client:

Waterman

Project:

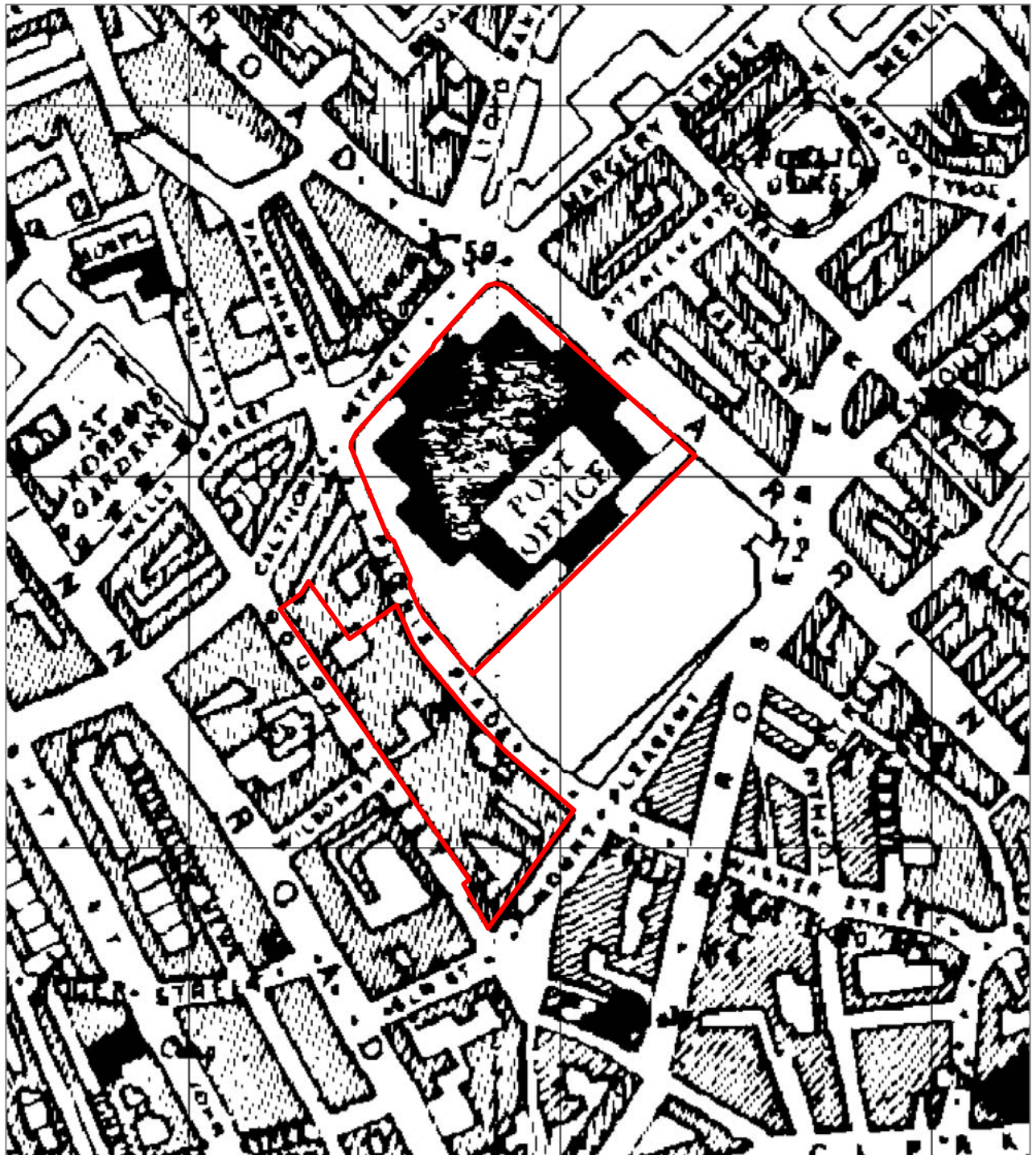
Mount Pleasant Sorting Office, London



Source:

Landmark Maps





— Approximate site boundary

Report Reference:  
4144TA

Client:  
Project:

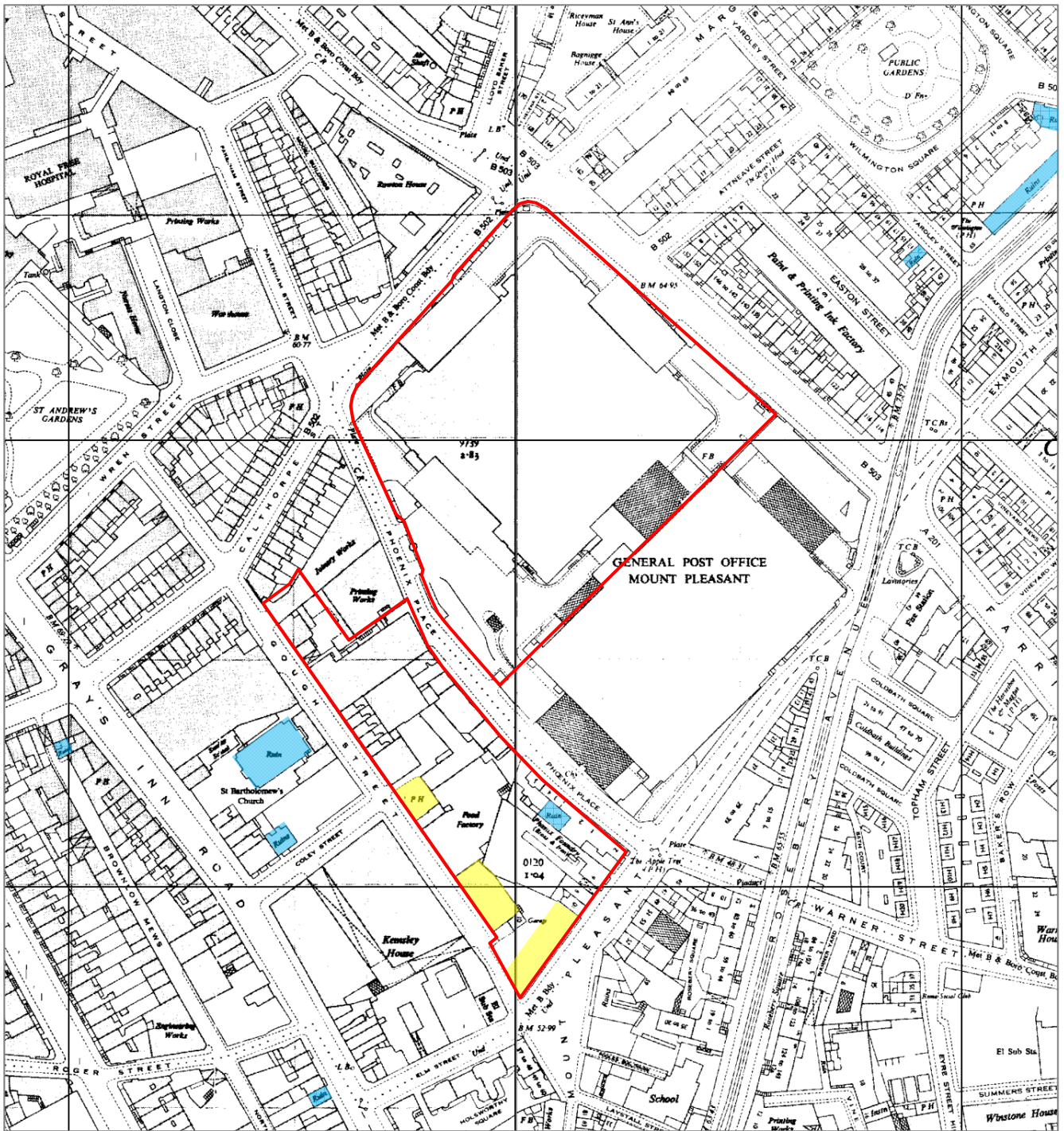
Waterman

Mount Pleasant Sorting Office, London



Source: Landmark Maps





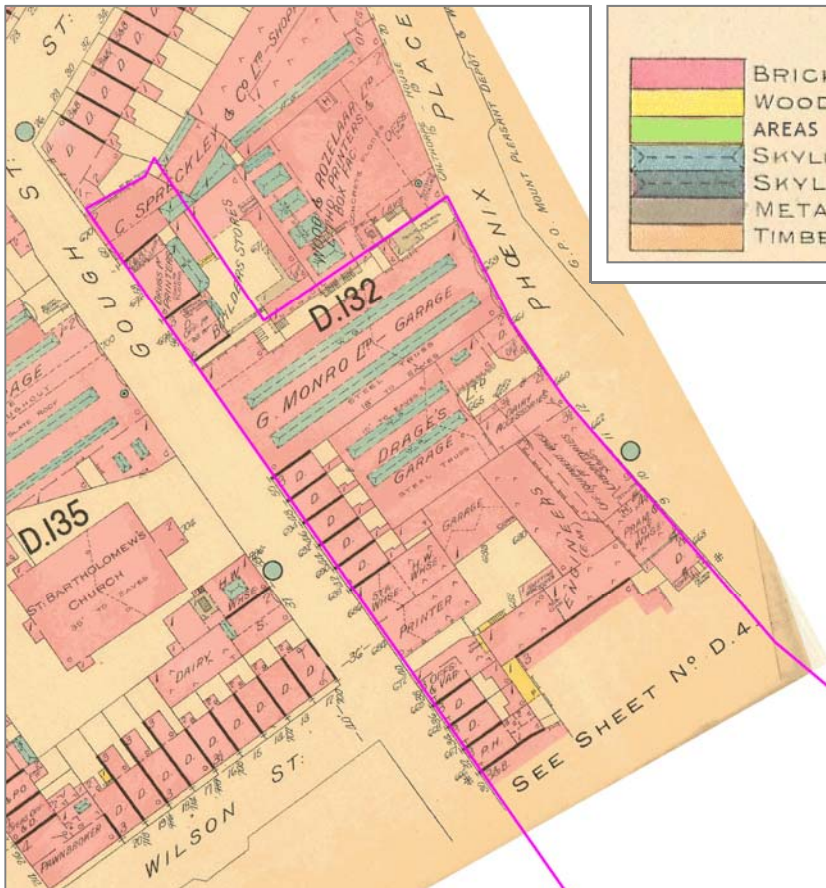
- Approximate site boundary
- Ruins
- Clearance

Report Reference:  
4144TA

Client: Waterman  
Project: Mount Pleasant Sorting Office, London



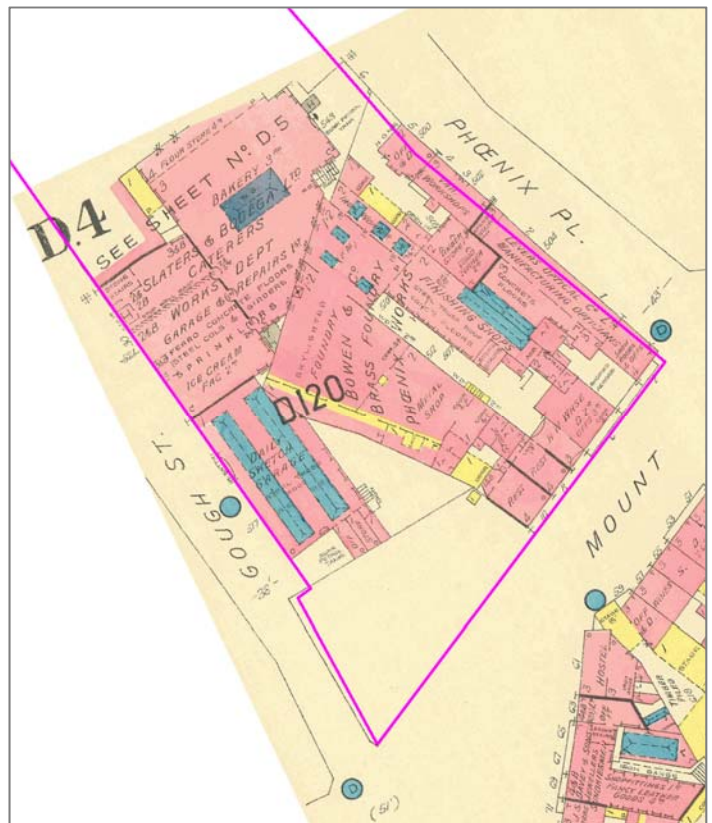
Source: Landmark Maps



### COLORS

	BRICK, STONE OR CONCRETE
	WOOD
	AREAS CLEARED DUE TO ENEMY ACTION
	SKYLIGHTS ON 1 & 2 STORY BUILDINGS
	SKYLIGHTS ON HIGHER BUILDINGS
	METAL BUILDINGS.
	TIMBER PILED OR STACKED

— Approximate site boundary



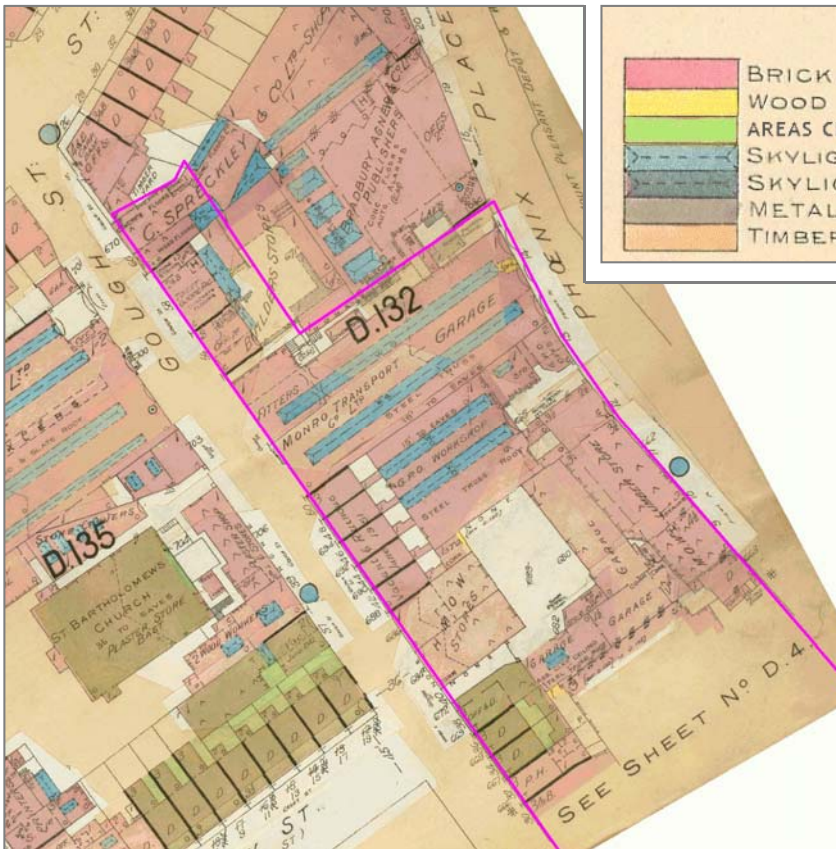
Report Reference:  
4144TA

Client: Waterman  
Project: Mount Pleasant Sorting Office, London



Source: Landmark Maps

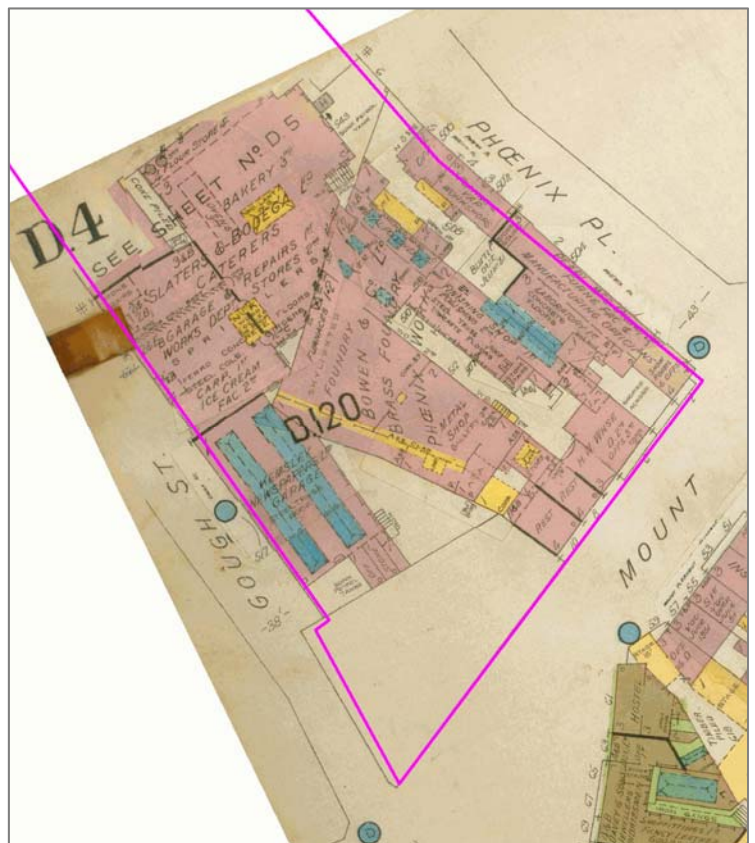




**COLORS**

	BRICK, STONE OR CONCRETE
	WOOD
	AREAS CLEARED DUE TO ENEMY ACTION
	SKYLIGHTS ON 1 & 2 STORY BUILDINGS
	SKYLIGHTS ON HIGHER BUILDINGS
	METAL BUILDINGS.
	TIMBER PILED OR STACKED

— Approximate site boundary



Report Reference:  
4144TA

Client:  
Waterman

Project:  
Mount Pleasant Sorting Office, London



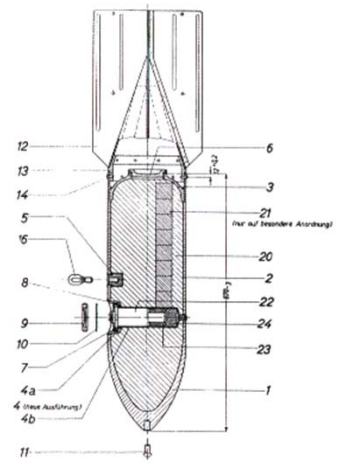
Source: Landmark Maps

**SC 50**

Bomb Weight: 40-54kg (110-119lb)  
 Explosive Weight: c25kg (55lb)  
 Fuze Type: Impact fuze/electro-mechanical time delay fuze  
 Bomb Dimensions: 1,090 x 280mm (42.9 x 11.0in)  
 Body Diameter: 200mm (7.87in)  
 Use: Against lightly damageable materials, hangars, railway rolling stock, ammunition depots, light bridges and buildings up to three stories.  
 Remarks: The smallest and most common conventional German bomb. Nearly 70% of bombs dropped on the UK were 50kg.



50kg bomb, London Docklands



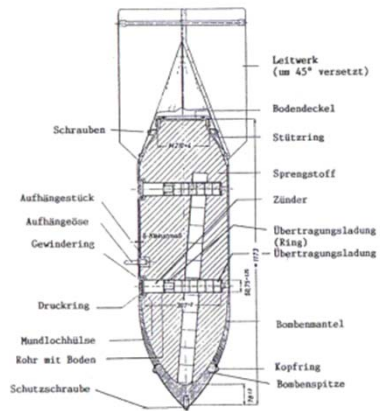
SC-50 JA (Güteklasse 1)

**SC 250**

Bomb weight: 245-256kg (540-564lb)  
 Explosive weight: 125-130kg (276-287lb)  
 Fuze type: Electrical impact/mechanical time delay fuze.  
 Bomb dimensions: 1640 x 512mm (64.57 x 20.16in)  
 Body diameter: 368mm (14.5in)  
 Use: Against railway installations, embankments, flyovers, underpasses, large buildings and below-ground installations.



250kg bomb, Hawkinge



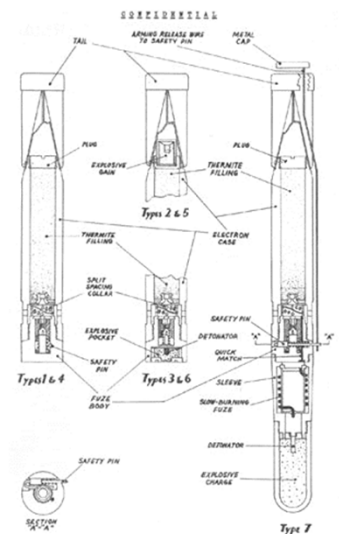
SC-250 JA (Güteklasse 1)

**1kg Incendiary Bomb**

Bomb weight: 1.0 and 1.3kg (2.2 and 2.87lb)  
 Filling: 680gm (1.3lb) Thermit  
 Fuze type: Impact fuze  
 Bomb dimensions: 350 x 50mm (13.8 x 1.97in)  
 Body diameter: 50mm (1.97in)  
 Use: As incendiary – dropped in clusters against towns and industrial complexes  
 Remarks: Jettisoned from air-dropped containers. Magnesium alloy case. Sometimes fitted with high explosive charge



- 1. Scaffold pipe
- 2. Incendiary 1kg bomb
- 3. Incendiary bomb recently found on site in UK



GERMAN 1 Kg. INCENDIARY & MODIFICATIONS (INCLUDING 1.3 and 2.2 Kg.)

Report Reference: 4144TA

Client: Waterman  
 Project: Mount Pleasant Sorting Office, London





**1<sup>st</sup> September 2012 News – Unexploded World War II Device detonated on Bournemouth beach**

An unexploded World War II device has been detonated on Bournemouth beach, according to Dorset Police. The discovery was made on Friday at 19:11 BST near the junction of East Overcliff Drive and Manor Road.  
<http://www.bbc.co.uk/news/uk-england-dorset-19445172>

**31<sup>st</sup> August 2012 News – Suspected Unexploded Weapon found on Cornwall's Porthmeor beach**

Lifeguards have found what is believed to be a section of an unexploded weapon on a Cornish beach. The object, which witnesses have said looks like a corroded depth charge – an anti-submarine warfare weapon – has been found at Porthmeor Beach, in St Ives, Falmouth Coastguard has said.  
<http://www.bbc.co.uk/news/uk-england-cornwall-19440291>

**11<sup>th</sup> August 2012 News – Unexploded Bomb uncovered by workmen in Carlisle**  
Army bomb disposal experts have been called to Carlisle after what is thought to be an unexploded bomb was dug up. Workmen on a building site at Trinity School uncovered the device earlier. Cumbria Police said a cordon had been put in place and the sports centre on Strand Road had been evacuated as a precaution. A bomb disposal unit from Catterick Garrison, in North Yorkshire, attended the scene.  
<http://www.bbc.co.uk/news/uk-england-cumbria-19224152>

**28<sup>th</sup> July 2012 News – Alert over 'unexploded shells' in Sheerness Harbour**  
Thirty-nine people were evacuated from two vessels in Kent after suspected unexploded shells were found. A 100m exclusion zone was also put around Sheerness Harbour on Saturday afternoon after two separate calls. The first call came from a catamaran which had an 18in by 5in shell on its deck at about 14:00 BST. At 15:30 BST, a 90m cable layer reported having a 12in by 4in shell on board. The shells were later declared safe by Royal Navy experts.  
<http://www.bbc.co.uk/news/uk-england-kent-19034493>

**10<sup>th</sup> July 2012 News – Unexploded WWII Bomb safely detonated off Kent coast**

An unexploded wartime German bomb found off the coast of Kent has been safely detonated, coastguards have said. The 500lb (226kg) device was discovered by a dredger in Dover harbour on Monday but it could not be made safe as the tidal conditions were not right. Dover Coastguard worked with a four-man Royal Navy bomb disposal team from Portsmouth to move it to a remote area. A spokeswoman said it was detonated at 08:45 BST, three-and-a-half miles (5.6km) east of Deal Pier. The World War II explosive was 3.3ft (1m) in length and was said to have had fins which had rusted off.  
<http://www.bbc.co.uk/news/uk-england-kent-18765547>

**8<sup>th</sup> April 2012 News – Huge explosion as experts detonate large WWII Mine**  
Water and ash were propelled more than 120m (390ft) into the air when Royal Navy experts detonated a German mine in the Thames estuary. The 750kg (1,650lb) unexploded World War II (WWII) weapon was placed on the sea bed after it was caught in the nets of a fishing boat earlier in the week. Divers brought it to the surface and then took it to a spot off Kent, during a "delicate" seven-hour operation.  
<http://www.bbc.co.uk/news/uk-england-kent-17652116>

**5<sup>th</sup> March 2012 News – Beach open after WWII shell found**

A beach in County Londonderry has reopened after an unexploded World War II shell was found on Sunday. The device was discovered lying near the water on Benone beach by a member of the public. The beach was evacuated just before 16:00 GMT, and a controlled explosion was carried out by army bomb experts  
<http://www.bbc.co.uk/news/uk-northern-ireland-foyle-west-17255505>

**21<sup>st</sup> February 2012 News – Two WWII bombs detonated near Lincolnshire village**

Bomb disposal experts have carried out a controlled explosion on two devices found near Manby in Lincolnshire. Anglian Water found the unexploded World War II shells near the former RAF Manby airfield, opposite the Motorplex building, on Monday. The area was cordoned off and police remained at the scene until experts from the Ministry of Defence explosive ordnance disposal team arrived.  
<http://www.bbc.co.uk/news/uk-england-lincolnshire-17111021>

**9<sup>th</sup> January 2012 News – County Durham road reopens after WWII shell uncovered**

A road in County Durham was closed after an unexploded WWII shell was found. The shell was found on land at Slaidburn Road, Stanley, near the A693 Chester Road. Durham Police advised people to avoid the area, closing Chester Road and evacuating a local bus depot and nearby garage as a precaution. Catterick's bomb squad carried out a controlled explosion and all cordons have now been lifted.  
<http://www.bbc.co.uk/news/uk-england-tyne-16473968>

**13<sup>th</sup> October 2011 News – WWII grenades found near Gatwick Airport**

Unexploded World War II hand grenades have been discovered close to Gatwick Airport. Network Rail staff found the explosives while working near Gatwick Airport railway station in West Sussex. A bomb disposal team was called in to carry out a controlled explosion at about 10:50 BST, Sussex Police said. The bomb disposal team found three hand grenades, one four-inch mortar and a smoke grenade in a metal container and identified them as World War II explosives, he added. Outgoing flights from the airport and rail services were halted as a precaution for about 15 minutes but have since resumed. The alert affected train services run by Gatwick Express, Southern, First Capital Connect and First Great Western.  
<http://www.bbc.co.uk/news/uk-england-sussex-15292719>

**SKY NEWS**  
Website of the Year

FIRST FOR BREAKING NEWS

**M62 Motorway Closed For Detonation Of World War Two Bomb**

CHOOSE YOUR NEWS

5:04pm UK, Friday January 04, 2008

A busy motorway has been closed to allow for a wartime bomb to be detonated nearby.



The controlled explosion

Army experts destroyed the huge Second World War device in a controlled explosion near the M62.

The motorway was shut in both directions between junctions 37 and 38 as a safety precaution.

The "deeply buried" bomb had lain dormant in an East Yorkshire field for almost 64 years.

The device was discovered by a metal detecting enthusiast on New Year's Eve in a field near the B1230 at Balkholme, near Howden, which was also closed.

An Army bomb disposal team travelled up from Essex to join police, ambulance and fire services and utility companies at the scene.

Captain Tim Ives, of 33 Engineer Regiment, earlier said 10 soldiers would be employed to "reduce the effects of the controlled explosion by packing sand around the device".

Page last updated at 14:45 GMT, Friday, 22 May 2009 15:45 UK

E-mail this to a friend

Printable version

**Building site WWII bomb exploded**

Building site WWII bomb exploded

**A controlled explosion has been carried out on a World War II bomb found on a building site in East Sussex.**

The 110lb (50kg) SC50 bomb, thought to have been dropped from a German aircraft in 1940 or 1941, was found at the Hollenden House site in Bexhill.

Children at St Peter and St Paul Primary School next door in Buckhurst Road were sent home early after the discovery on Thursday.

Police said a 160ft (50m) cordon was put round the site during the blast.

**BBC**

14:23 GMT, Thursday, 5 June 2008 15:23 UK

E-mail this to a friend

Printable version

**Unexploded bomb 'started to tick'**

**An unexploded World War II bomb started to tick and ooze liquid as experts tried to defuse it, police have said.**

The large bomb was found in a river at Sugar House Lane, near Bromley-by-Bow Tube station in east London, on Monday.

Rush-hour travel was disrupted as overnight work to make the bomb safe continued into Thursday morning.

Police commander Simon O'Brien said: "It started to tick and ooze some pretty horrible substances." It stopped ticking when doused with liquid.

**'Hero colleague'**

"It measures approximately the size and length of a man, and weighs around 1,000kg (2,200lb).



Report Reference:

4144TA

Client:

Waterman

Project:

Mount Pleasant Sorting Office, London

Source: Various news sources



International

FRIDAY, 16 SEPTEMBER, 1994 23



RESCUE workers search for survivors after a Second World War bomb exploded at a building site in Berlin, killing three people and injuring at least eight others. A fire brigade spokesman said he feared the final death toll could be higher. One worker was still missing, believed to be trapped under a machine. "We've

Blown up by history

found human remains 100 metres away but we can't tell if they belong to the dead already found," the spokesman said. The blast, set off by drilling work on Frankfurter Allee, one of east Berlin's busiest avenues, trapped

workers under building machinery and sent huge chunks of concrete tumbling through the air. A large office block was being built on the site of the explosion which sent shoppers scrambling for shelter and paralysed

dense afternoon traffic. One eyewitness said: "There was a bang, then silence, and then it started raining stones and dirt." Dozens of cars within a 250-metre radius were wrecked and the top two floors of a nearby apartment block caved in. Radio reports claimed that the total number of injured stood at 14.



BBC Home News Sport Weather iPlayer TV Radio More...  
**NEWS** LIVE BBC NEWS CHANNEL

Page last updated at 14:37 GMT, Wednesday, 2 June 2010 15:37 UK

World War II bomb kills three in Germany

Three people have been killed and six injured trying to defuse a World War II bomb in central Germany.

Workers building a sports stadium had earlier unearthed the bomb in the town of Goettingen.

It was not immediately clear why the bomb, reportedly weighing 500kg (1,100lb), had detonated.



Unexploded WWII bombs dropped by Allied planes are frequently found in Germany, though it is unusual for them to explode unexpectedly.

A special commission is investigating the causes of the explosion, while prosecutors are considering whether the team leader should face charges of manslaughter through culpable negligence, the BBC's Oana Lungescu reports from Berlin.

More than 7,000 people were immediately evacuated when the 500kg bomb was found. Several schools, a kindergarten and local companies remain closed.

Last week, another device was successfully defused close to the site.

In Berlin, four bombs have been found in the past two months, including one near the capital's main airport.


Top Left: Three people killed and eight injured in Berlin, 1994

Bottom Left: Three people killed in Germany, 2010

Top Right: WWII bomb injures seventeen at construction site in Hattingen, Germany, in September 2008.

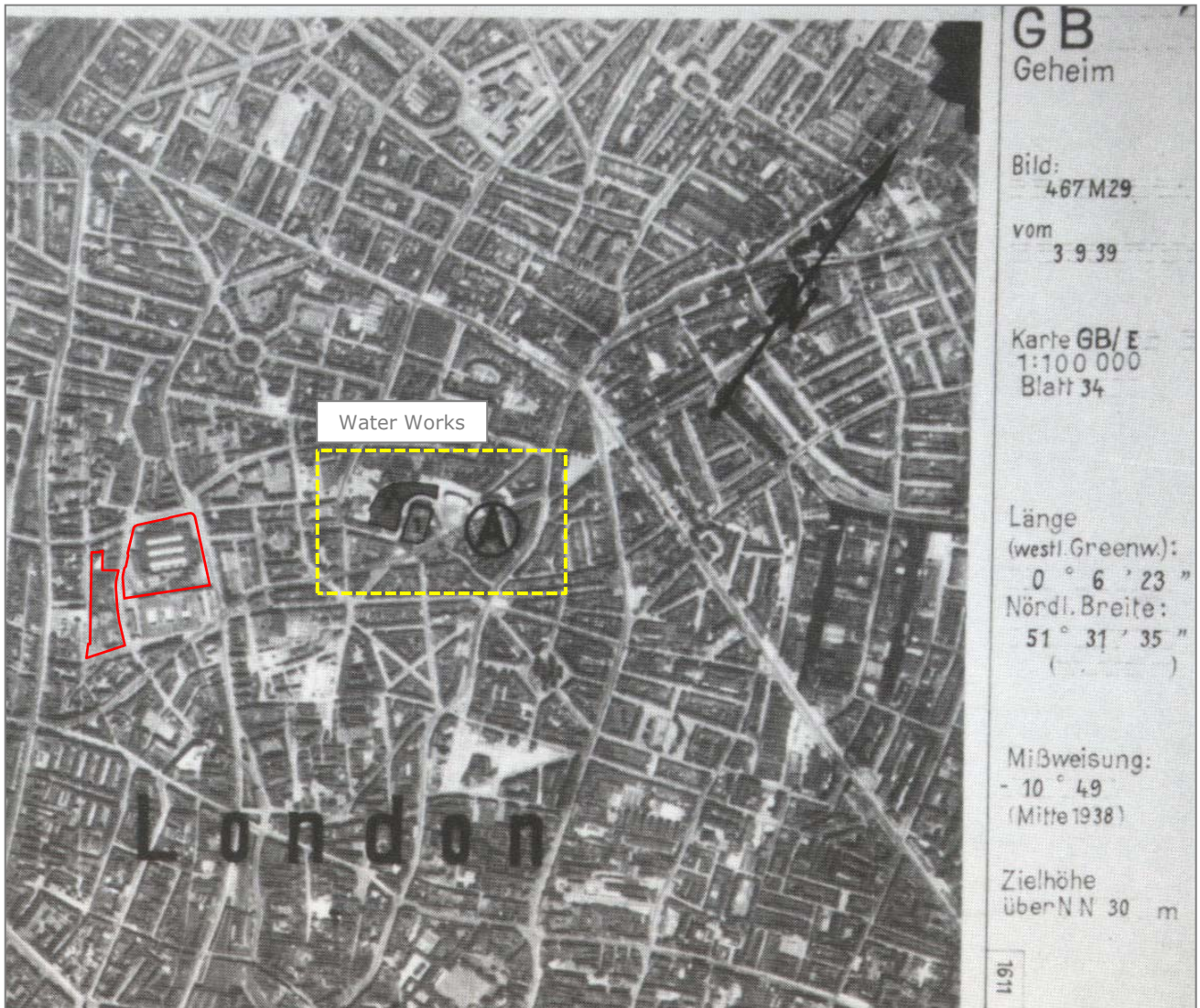
Middle Right: WWII Bomb Explodes on German Motorway. A highway construction worker in Germany accidentally struck an unexploded WWII bomb, causing an explosion which killed him and wrecked several passing cars in October 2006.

Bottom Right: Piling rig and dump truck after detonation of Allied UXB, Austria 2006. Emergency teams aiding injured operator

Report Reference: 4144TA	Client: Waterman	
	Project: Mount Pleasant Sorting Office, London	

Source: Various news sources



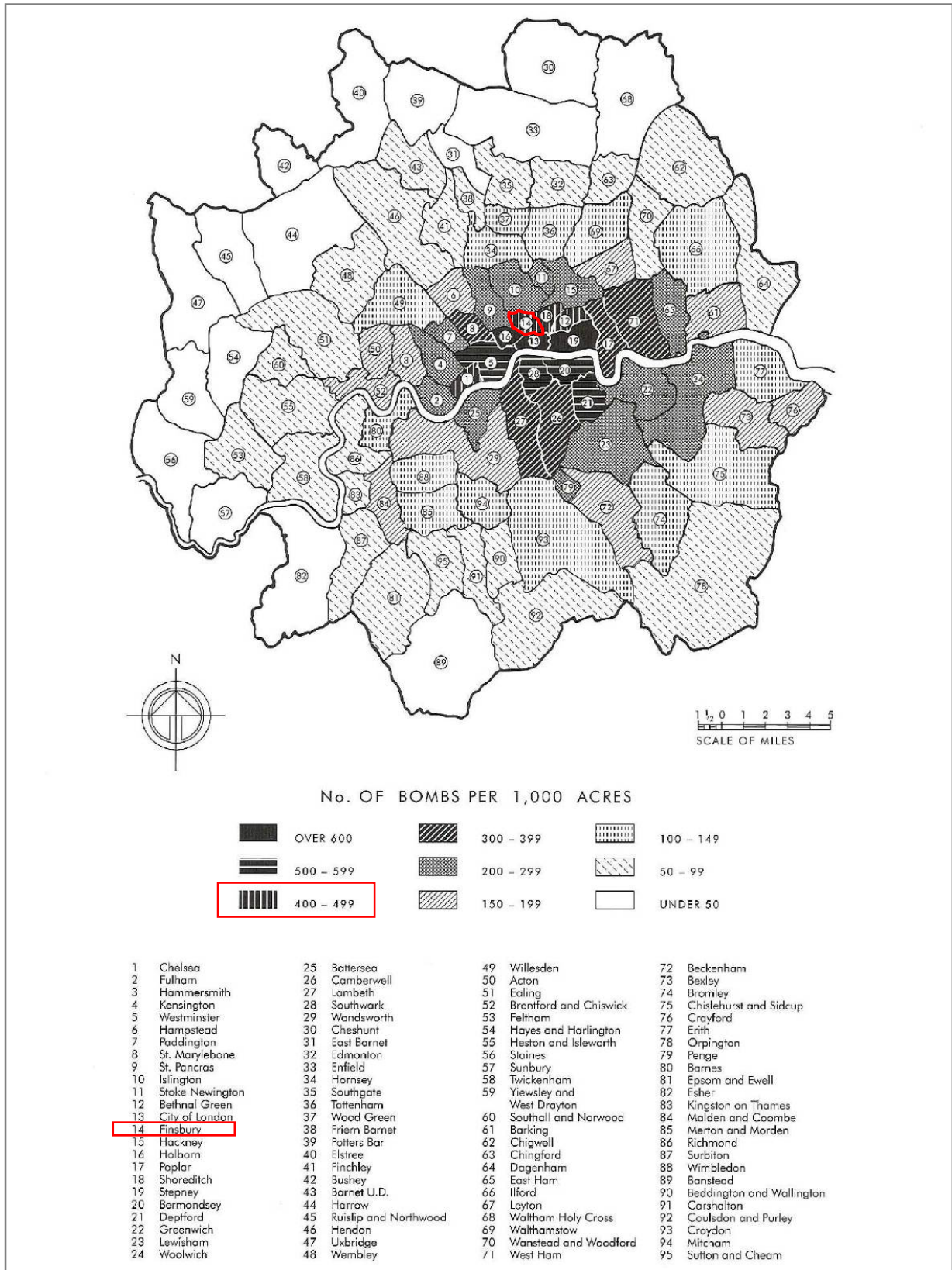


— Approximate site boundary

Report Reference:  
4144TA

Client:	Waterman
Project:	Mount Pleasant Sorting Office, London





The density of bombing across the London Region from 1939 to 1945 produced by the Research and Experiments Dept of the Ministry of Home Security. The sites lie in the WWII-era Borough of Finsbury, which sustained 400 - 499 bombs per 1,000 acres.

Report Reference:  
4144TA

Client:  
Waterman

Project:  
Mount Pleasant Sorting Office, London



Source: London Metropolitan Archives





Consolidated Bomb Plots



Night Bombing up to 7<sup>th</sup> October 1940



Night Bombing 7<sup>th</sup> October 1940 – 21<sup>st</sup> July 1941



HE bomb strike within 100m of the site boundary



Approximate site boundary

Report Reference:  
4144TA

Client:

Waterman

Project:

Mount Pleasant Sorting Office, London



Source: National Archives



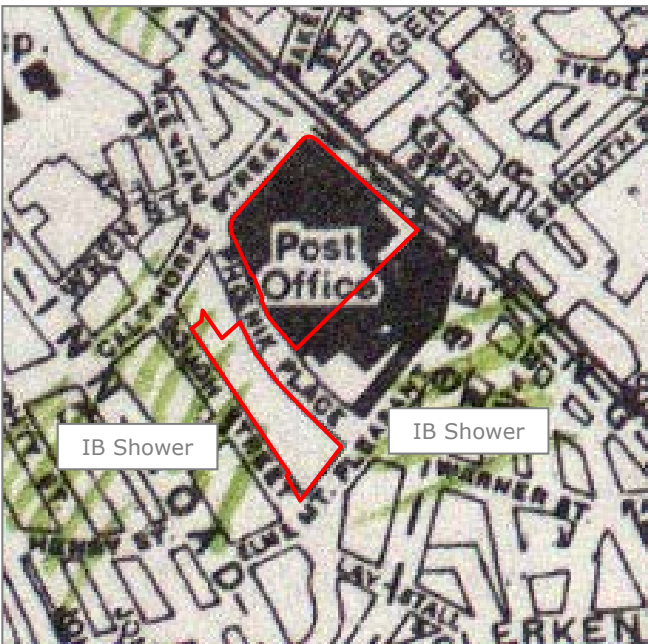
Weekly Bomb Plots



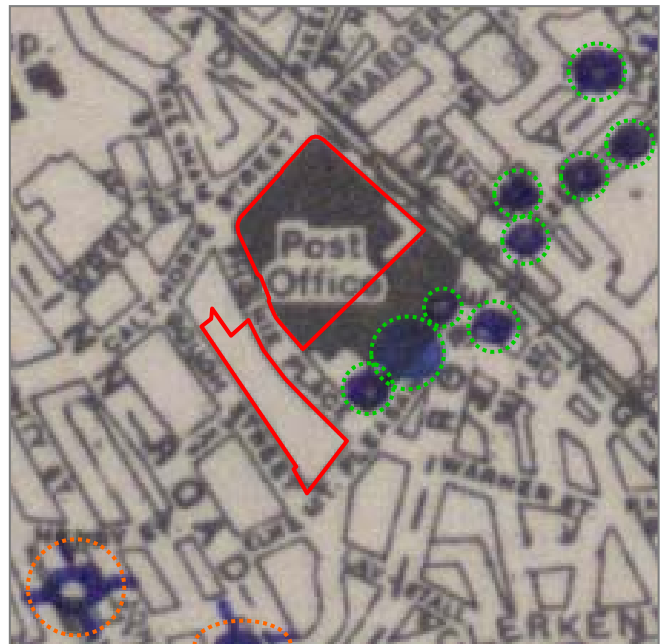
11<sup>th</sup> – 18<sup>th</sup> November 1940



23<sup>rd</sup> – 30<sup>th</sup> December 1940



30<sup>th</sup> December 1940 – 6<sup>th</sup> January 1941



14<sup>th</sup> – 24<sup>th</sup> April 1941



HE bomb strike



HE UXB strike



Approximate site boundary

Report Reference:  
4144TA

Client:  
Waterman  
Project:  
Mount Pleasant Sorting Office, London



Source: National Archives





Weekly Bomb Plots



5<sup>th</sup> – 12<sup>th</sup> May 1941



14<sup>th</sup> – 20<sup>th</sup> June 1943



20<sup>th</sup> - 26<sup>th</sup> March 1944

HE bomb strike

Unknown bomb strike

Approximate site boundary

Report Reference:  
4144TA

Client:  
Waterman  
Project:  
Mount Pleasant Sorting Office, London



Source: National Archives



— Approximate site boundary

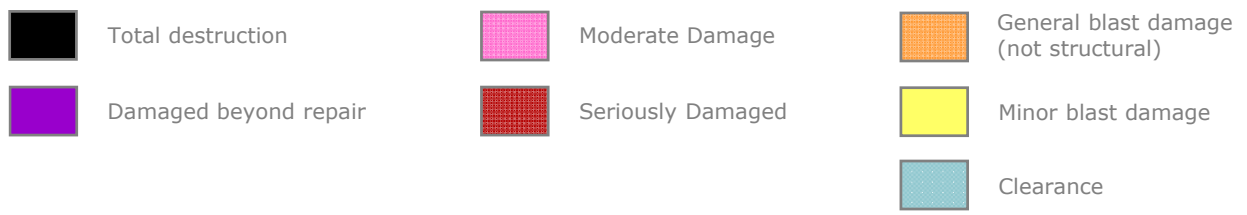
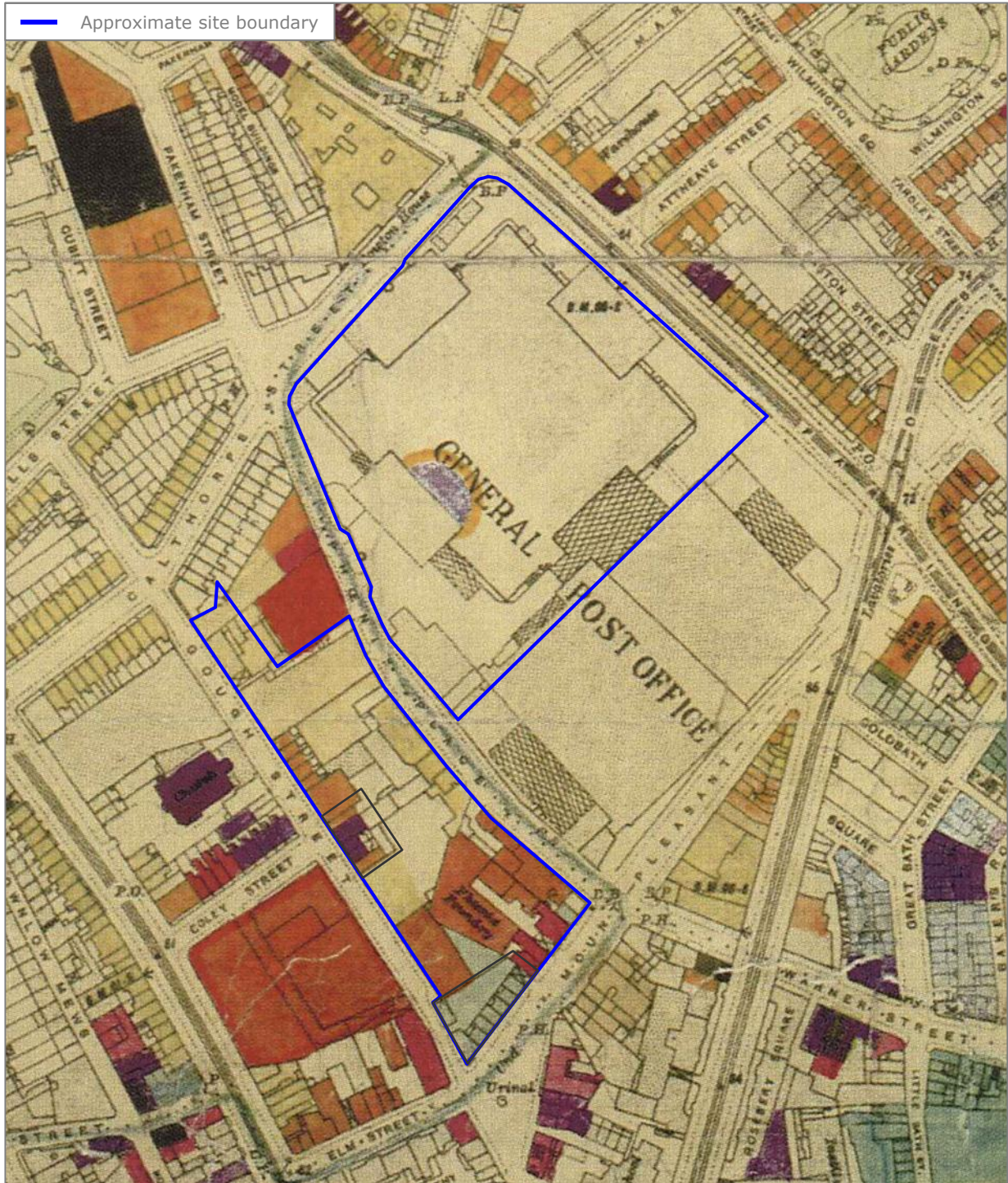
Report Reference:  
4144TA

Client:  
Waterman  
Project:  
Mount Pleasant Sorting Office, London



Source: National Archives





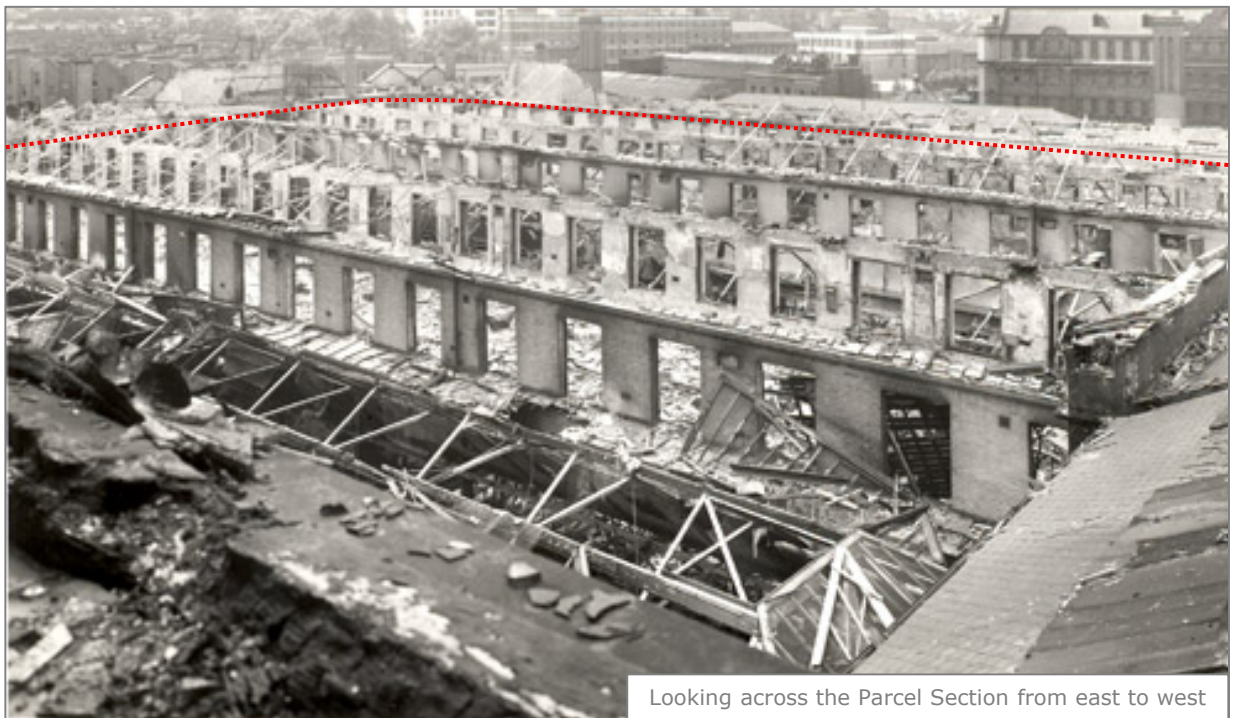
Report Reference:  
4144TA

Client:	Waterman
Project:	Mount Pleasant Sorting Office, London



Source: London Metropolitan Archives





..... Inferred site boundary

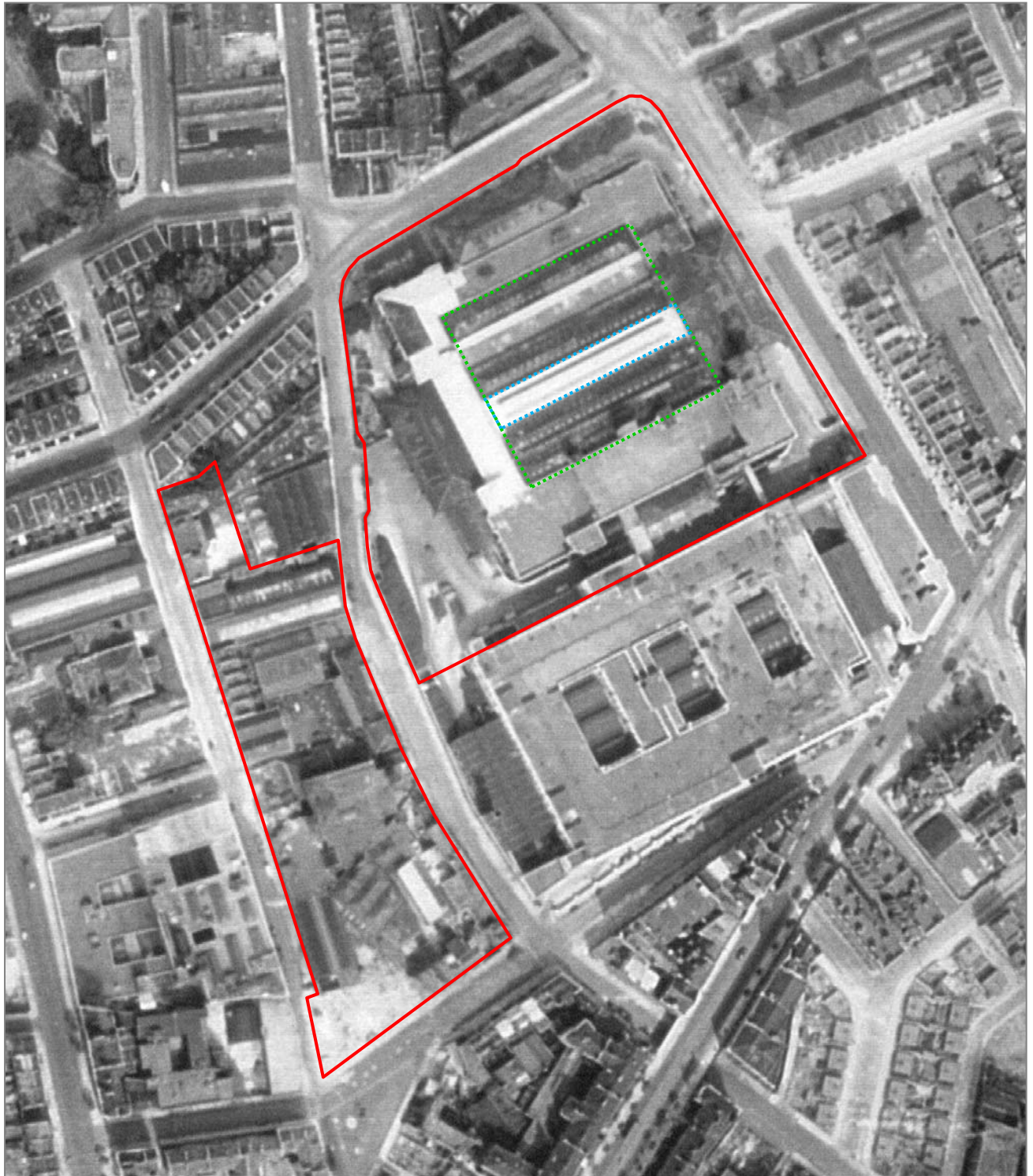
Report Reference:  
4144TA




Client:  
Waterman  
Project:  
Mount Pleasant Sorting Office, London



Source: <http://postalheritage.wordpress.com/tag/mount-pleasant/>





-  Approximate site boundary
-  Roof repairs
-  1943 fire damage – See Annex L

Report Reference:  
4144TA

Client:  
Waterman

Project:  
Mount Pleasant Sorting Office, London



Source: National Monument Records Office

### 3.7 inch Anti-Aircraft Projectile

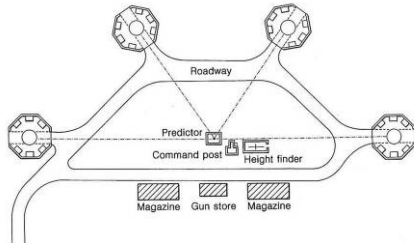
Weight: 12.7kg (28lb)  
 Dimensions: 94 x 360mm (3.7 x 14.7in)  
 Carriage: Mobile and Static Versions  
 Rate of Fire: 10-20 rounds per minute  
 Ceiling: 9-18,000m (29-59,000ft)  
 Muzzle Velocity: 792m/s (2,598ft/s)  
 Remarks: 4.5 inch projectiles were also commonly utilised



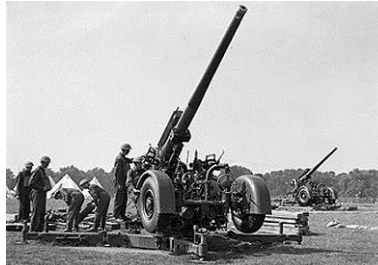
This AA shell was uncovered on a construction site in North London in February 2009.



3.7 inch AA Projectile Minus Fuze



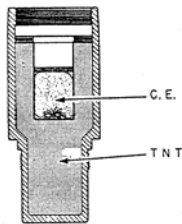
Layout plan for a typical HAA battery site.



Hyde Park 1939 3.7 Inch QF gun on mobile mounting

### Rockets/Unrotated Projectiles

Weight: Overall: 24.5kg (54lb) Warhead: 1.94kg (4.28lb)  
 Dimensions: 1930mm x 82.6mm (76 x 3.25in)  
 Carriage: Mobile – transported on trailers  
 Ceiling: 6770m (22,200ft)  
 Maximum Velocity: 457mps (1,500 fps)



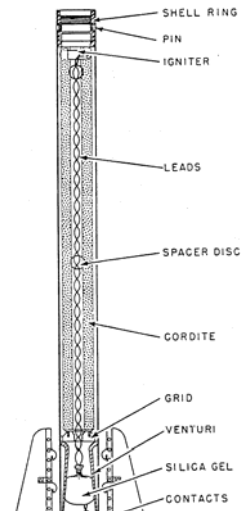
MK II HE Shell (3.5kg)



Rocket Battery in action



Home Guard soldiers load an anti-aircraft rocket at a 'Z' Battery



2" U.P. AA Rocket

### 40mm Bofors Gun Projectile

Weight: 0.86kg (1.96lb)  
 Dimensions: 40mm x 310mm (1.6in x 12.2in)  
 Rate of Fire: 120 rounds per minute  
 Ceiling: 23,000ft (7000m )  
 Muzzle Velocity: 2,890 ft/s (881m/s)  
 Remarks: Mobile batteries – normally few records of where these guns were located



Unexploded 40mm Bofors projectile recovered from a marine environment



40mm Bofors gun and crew at Stanmore in Middlesex, 28 June 1940.



Report Reference:  
4144TA

Client:

Waterman

Project:

Mount Pleasant Sorting Office, London

