

Adamou, Tes

From: Adamou, Tes
Sent: 01 June 2016 18:50
To: Valerie Cooper (valerie.cooper@ucl.ac.uk); Plank, Colin
Cc: Wilson, Dominic; Thomas, Sebastian
Subject: UCL Astor - Meeting with MJ Media
Attachments: All GAs.pdf

Dear Valerie and Colin

At the meeting with **Martin Jones** of MJ Media, today we were joined by **Bob Page**, the lawyer of MJ Media and a Partner at MGPH. On our side, we had Galliford Try's **John Devereux** (Pre-construction manager) and **John Hunt** (Construction Manager), who added gravitas and answered some of Martin's construction questions.

Following our meeting, I would like to give you the main headlines of the discussion as follows:

1. Bob vocalised a concern regarding the oversailing clause in the contract. We went through the current lifting strategy, which includes a tower crane in the North-West part of the site, adjacent to the SWC site, and a hoist in the South-East, opposite MJ Media. The jib of the crane is not expected to oversail over their property, and this was confirmed by John Hunt. This put Martin at ease.
I expect him to be in communication with UCL to remove the clause from the Contract. We have not provided any legal advice with regards to the clause in question.
2. Martin raised the concern of noise. We guided him through the construction and logistics methodology, which currently identifies the logistics from the Bedford passage way. GT's approach of providing a scaffolding tunnel to shield the building will provide some shielding from the vehicle noise. We said that we will re-engage with MJ Media when the CMP gets developed, and when we have the construction programme completed.
3. Martin and Bob raised the issue that they have previously requested for the drawings and works that will be carried out at Astor. I said that we cannot provide such detail, and it needs to come from the Client. For this purpose, I am attaching the GAs for Astor in one PDF, should you wish to forward that to Martin. Alternatively, we can forward them with UCL's permission.

The meeting was overall a success as we have managed Martin's expectations with regards to construction noise and potential mitigation techniques. I anticipate that he will be raising the issue of vehicles backing up again in the near future. Once we have put the draft CMP together (draft expected from GT on the 22 June 2016), we can arrange another workshop.

If you have any questions with regards to the above, please do not hesitate to contact me.

Kind regards,

Tes Adamou | Project Manager | tes.adamou@arcadis.com
Arcadis LLP | Arcadis House, 34 York Way, London | N1 9AB | United Kingdom
T. +44 (0) 20 7812 2817 | M. +44 (0) 7920 083 112 | F. +44 (0) 20 7812 2005
www.arcadis.com

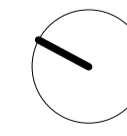


Be green, leave it on the screen.

Arcadis LLP is a limited liability partnership, registered in England, registered number OC368843. Registered office, Arcadis House, 34 York Way, London, N1 9AB. A list of the members' names is available for inspection at the above office. Part of the Arcadis Group of Companies, along with other entities in the UK. Regulated by RICS.

1
200

1
201



standard notes

1. Do not scale this drawing.
2. All dimensions must be checked on site and any discrepancies verified with the architect.
3. Unless shown otherwise, all dimensions are to structural surfaces.

THIS IS NOT A CONSTRUCTION DRAWING. IT IS UNSUITABLE FOR THE PURPOSE OF CONSTRUCTION AND MUST ON NO ACCOUNT BE USED AS SUCH.

drawing notes

DESIGN INTENT: These are design intent drawings and do not show full construction information. The Contractor must develop the details, without changing the visual, spatial or other performances, to provide a fully developed scheme including all concealed components such as wind posts, vapour barriers and cavity barriers. All dimensions on this drawing are taken to finished surfaces unless specifically indicated on the dimensions itself.

KEY:

- Proposed building
- Existing building (assumed)

1. Structural information including existing shown indicatively. Refer to Structural Engineers drawings for further information.

Areas out of project scope

revisions

P1	12.11.15	First Revit Issue
P2	27.11.15	Design Team Issue
P3	15.12.15	Client Issue
P4	23.12.15	Design Team Issue
P5	15.01.15	Issue for Costing
T1	19.02.16	Tender Issue

ASTOR COLLEGE, UCL

Charlotte Street, W1T 4QB

date
Nov 2015

client
UCL

scale
1 : 100

drawing number
2869 · L · 098

rev
T1

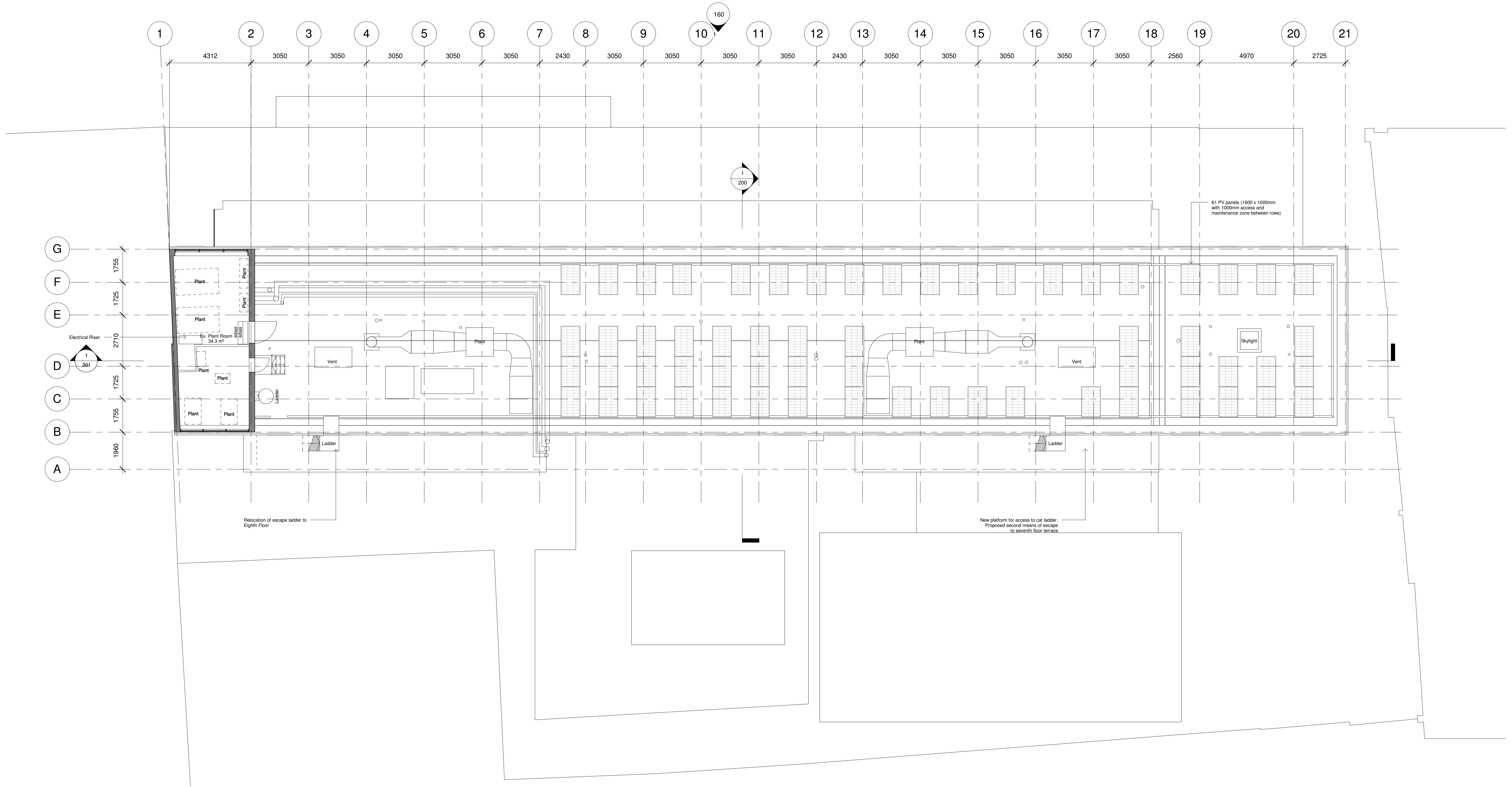
drawn JC
checked KS

C:\Revit Local\2869_Astor College-CENTRAL_andrew.mckay.rvt

Levitt Bernstein
1 Kingsland Passage
London
E8 2BB

t: 020 7275 7676
f: 020 7275 9348
w: levittbernstein.co.uk
e: post@levittbernstein.co.uk

Levitt Bernstein



ASTOR COLLEGE, UCL

Charlotte Street, W1T 4QB

standard notes

1. Do not scale this drawing.
2. All dimensions must be checked on site and any discrepancies verified with the architect.
3. Unless shown otherwise, all dimensions are to structural surfaces.

THIS IS NOT A CONSTRUCTION DRAWING. IT IS UNSUITABLE FOR THE PURPOSE OF CONSTRUCTION AND MUST ON NO ACCOUNT BE USED AS SUCH.

drawing notes

DESIGN INTENT: These are design intent drawings and do not show full construction information. The Contractor must develop the details, without changing the visual, spatial or other performances, to provide a fully developed scheme including all concealed components such as wind posts, vapour barriers and cavity barriers. All dimensions on this drawing are taken to finished surfaces unless specifically indicated on the dimensions itself.

KEY:

- Proposed building
- Existing building (assumed)

1. Structural information including existing shown indicatively. Refer to Structural Engineers drawings for further information.

Areas out of project scope

revisions

P1	19.12.14	For Design Team comment
P2	19.01.15	Planning pack issue to UCL
P3	23.01.15	Issue for Planning
P4	04.02.15	Issue for Stage D
P5	14.07.15	Issue for Stage 3
P6	07.10.15	Issue for Stage 3 Addendum
P7	12.11.15	First Revit Issue
P8	27.11.15	Design Team Issue
P9	15.12.15	Client Issue
P10	23.12.15	Design Team Issue
T1	19.02.16	Tender Issue

date
June 2014

client
UCL

scale
1 : 100

drawing
Proposed Eighth Floor Plan

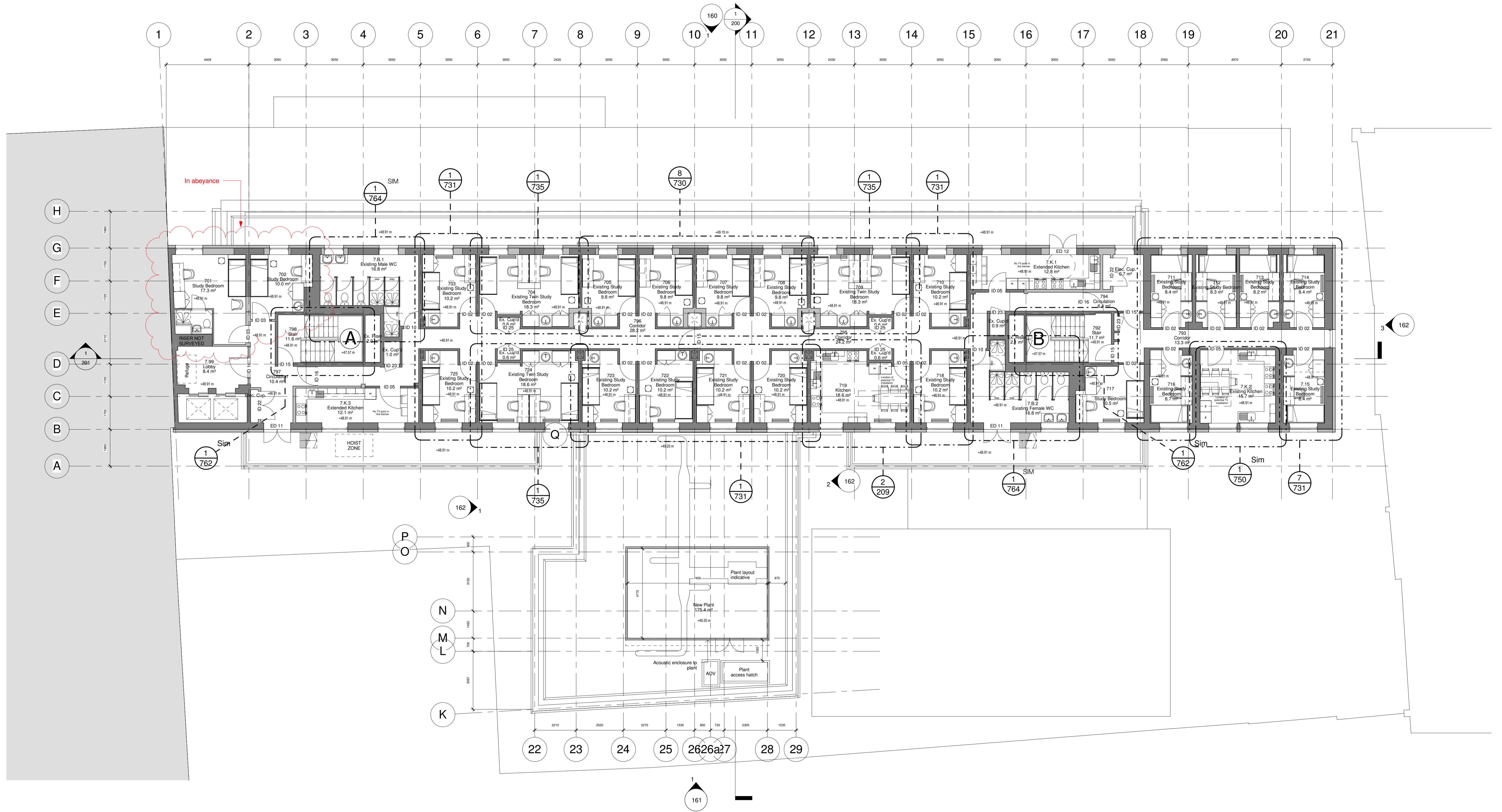
drawn checked drawing number rev
JC KS 2869 · L · 108 T1

C:\Revit Local\2869_Astor College-CENTRAL_andrew.mckay.rvt

Levitt Bernstein
1 Kingsland Passage
London
E8 2BB

t: 020 7275 7676
f: 020 7275 9348
w: levittbernstein.co.uk
e: post@levittbernstein.co.uk

Levitt Bernstein



ASTOR COLLEGE, UCL

Charlotte Street, W1T 4QB

standard notes

1. Do not scale this drawing.
2. All dimensions must be checked on site and any discrepancies verified with the architect.
3. Unless shown otherwise, all dimensions are to structural surfaces.

THIS IS NOT A CONSTRUCTION DRAWING. IT IS UNSUITABLE FOR THE PURPOSE OF CONSTRUCTION AND MUST ON NO ACCOUNT BE USED AS SUCH.

drawing notes

DESIGN INTENT: These are design intent drawings and do not show full construction information. The Contractor must develop the details, without changing the visual, spatial or other performances, to provide a fully developed scheme including all concealed components such as wind posts, vapour barriers and cavity barriers. All dimensions on this drawing are taken to finished surfaces unless specifically indicated on the dimensions itself.

KEY:

- Proposed building
- Existing building (assumed)

1. Structural information including existing shown indicatively. Refer to Structural Engineers drawings for further information.

Areas out of project scope

revisions

date	description
P1	04.07.14 First Issue
P2	17.07.14 Pre-App Meeting
P3	23.07.14 Issue to Design Team
P4	30.07.14 Lightwell Revisions
P5	26.08.14 South Kitch extended
P6	29.08.14 Stage C Report
P7	04.09.14 Issue for costing
P8	12.09.14 Issue for costing
P9	16.09.14 VAT layout revisions
P10	30.09.14 Access hatch for plant included
P11	06.10.14 Pre-App Meeting
P12	14.11.14 Issue to Design Team
P13	08.12.14 Principals meeting
P14	09.12.14 Issue to Design Team
P15	19.12.14 For Design Team comment

P16	15.01.15	Rear extension moved
P17	19.01.15	Planning pack issue to UCL
P18	23.01.15	Issue for Planning
P19	04.02.15	Issue for Stage D
P20	14.05.15	Issue for Planning - addition of brown roof
P21	14.07.15	Issue for Stage 3
P22	07.10.15	Issue for Stage 3 Addendum
P23	12.11.15	First Revit Issue
P24	27.11.15	Design Team Issue
P25	15.12.15	Client Issue
P26	23.12.15	Design Team Issue
P27	15.01.16	Issue for Costing
T1	19.02.16	Tender Issue

date Nov 2015

client UCL

scale 1 : 100

drawing Proposed Seventh Floor Plan

drawn JC

checked JM

drawing number 2869 · L · 107

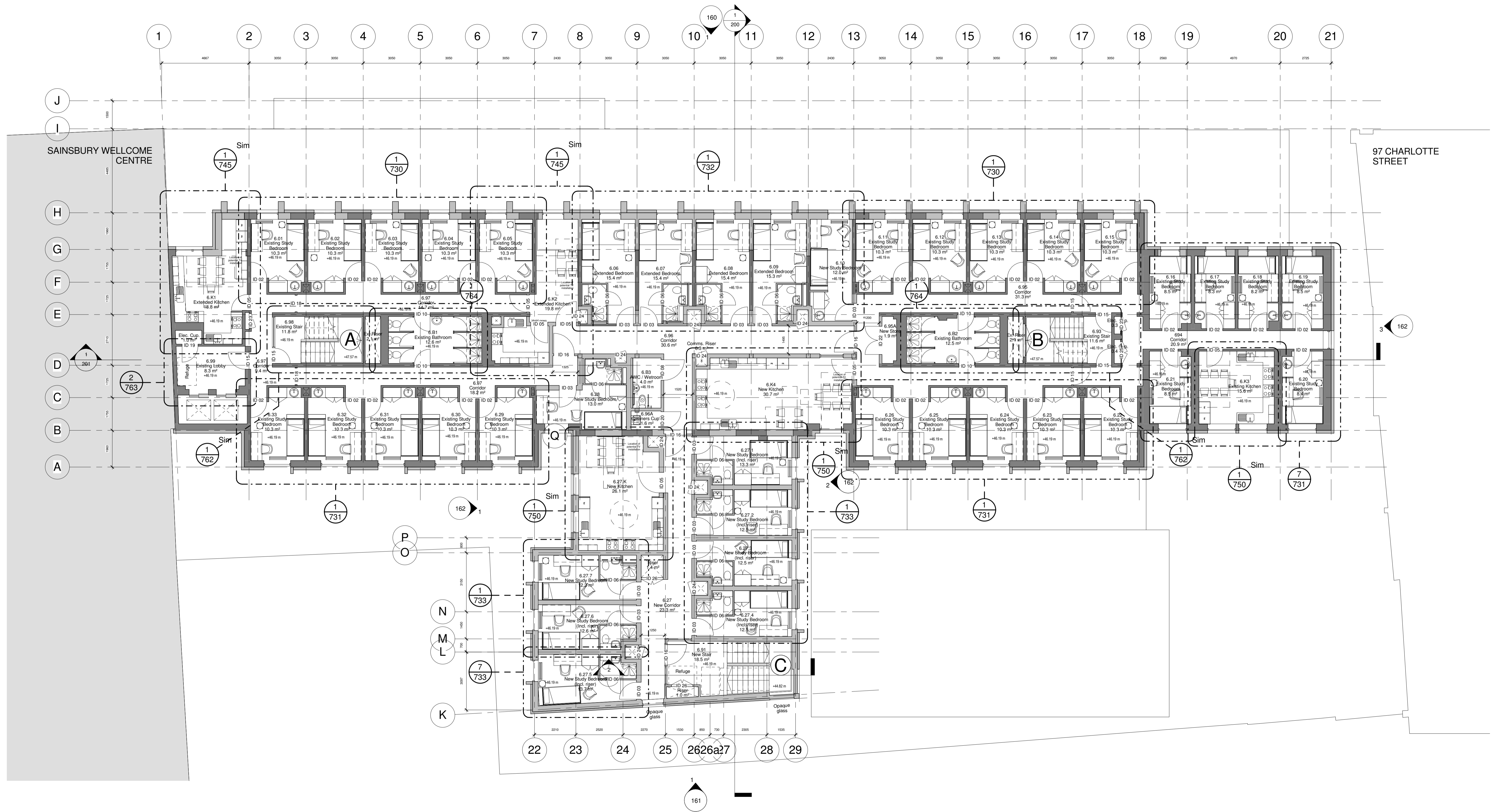
rev T1

C:\Revit Local\2869_Astor College-CENTRAL_andrew.mckay.rvt

Levitt Bernstein
1 Kingsland Passage
London
E8 2BB

t: 020 7275 7676
f: 020 7275 9348
w: levittbernstein.co.uk
e: post@levittbernstein.co.uk

Levitt Bernstein



standard notes

1. Do not scale this drawing.
2. All dimensions must be checked on site and any discrepancies verified with the architect.
3. Unless shown otherwise, all dimensions are to structural surfaces.

THIS IS NOT A CONSTRUCTION DRAWING. IT IS UNSUITABLE FOR THE PURPOSE OF CONSTRUCTION AND MUST ON NO ACCOUNT BE USED AS SUCH.

drawing notes

DESIGN INTENT: These are design intent drawings and do not show full construction information. The Contractor must develop the details, without changing the visual, spatial or other performances, to provide a fully developed scheme including all concealed components such as wind posts, vapour barriers and cavity barriers. All dimensions on this drawing are taken to finished surfaces unless specifically indicated on the dimensions itself.

KEY:

- Proposed building
- Existing building (assumed)

1. Structural information including existing shown indicatively. Refer to Structural Engineers drawings for further information.

Areas out of project scope

revisions

P1	12.11.15	First Revit Issue
P2	27.11.15	Design Team Issue
P3	15.12.15	Client Issue
P4	23.12.15	Design Team Issue
P5	15.01.15	Issue for Costing
T1	19.02.16	Tender Issue

ASTOR COLLEGE, UCL

Charlotte Street, W1T 4QB

date
Nov 2015

client
UCL

scale
1 : 100

drawing number
2869 · L · 106

rev
T1

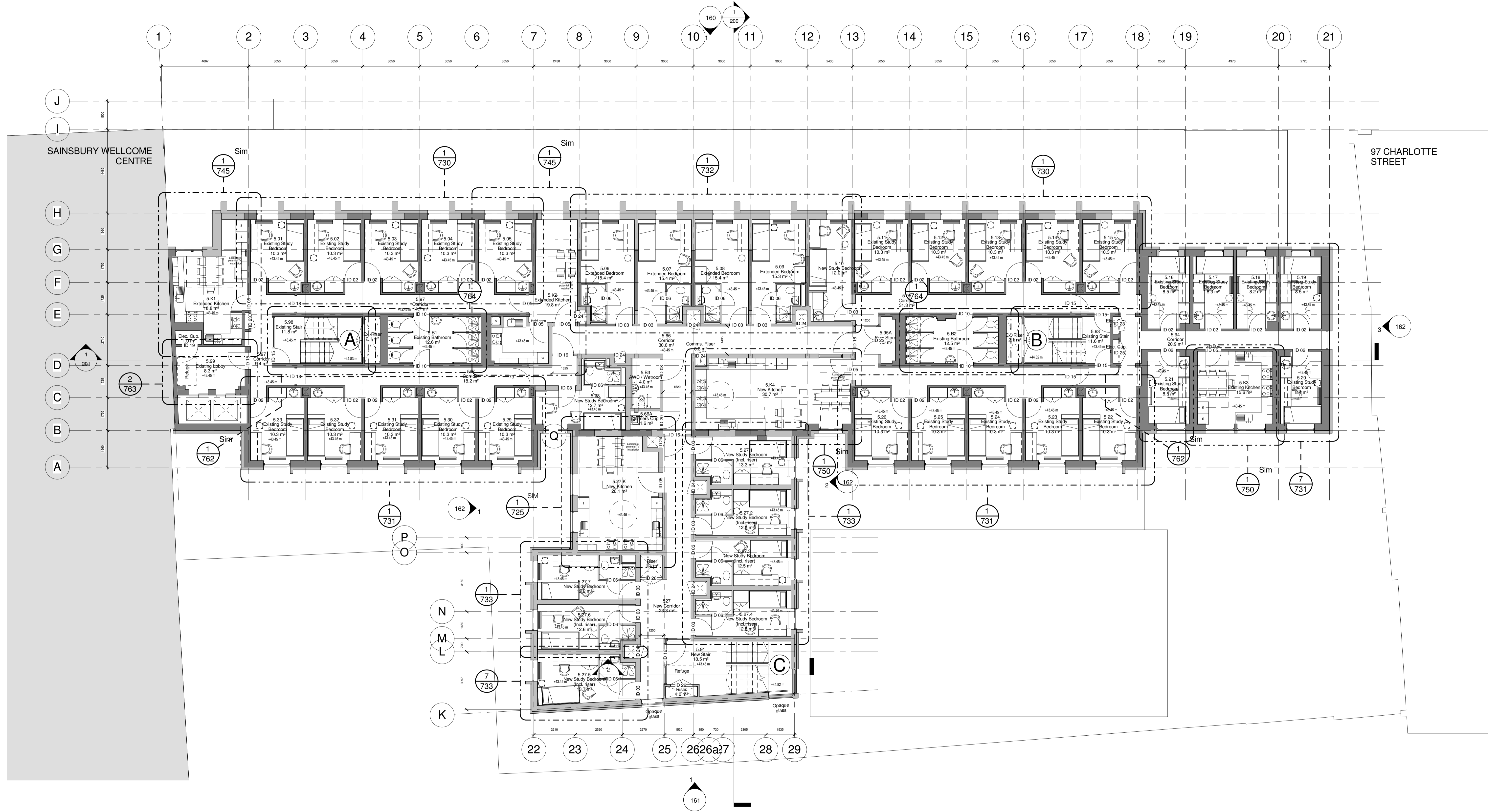
drawn JC
checked KS

C:\Revit Local\2869_Astor College-CENTRAL_andrew.mckay.rvt

Levitt Bernstein
1 Kingsland Passage
London
E8 2BB

t: 020 7275 7676
f: 020 7275 9348
w: levittbernstein.co.uk
e: post@levittbernstein.co.uk

Levitt Bernstein



ASTOR COLLEGE, UCL

Charlotte Street, W1T 4QB

standard notes

1. Do not scale this drawing.
2. All dimensions must be checked on site and any discrepancies verified with the architect.
3. Unless shown otherwise, all dimensions are to structural surfaces.

THIS IS NOT A CONSTRUCTION DRAWING. IT IS UNSUITABLE FOR THE PURPOSE OF CONSTRUCTION AND MUST ON NO ACCOUNT BE USED AS SUCH.

drawing notes

DESIGN INTENT: These are design intent drawings and do not show full construction information. The Contractor must develop the details, without changing the visual, spatial or other performances, to provide a fully developed scheme including all concealed components such as wind posts, vapour barriers and cavity barriers. All dimensions on this drawing are taken to finished surfaces unless specifically indicated on the dimensions itself.

KEY:

- Proposed building
- Existing building (assumed)

1. Structural information including existing shown indicatively. Refer to Structural Engineers drawings for further information.

Areas out of project scope

revisions

rev	date	description
P1	12.11.15	First Revit Issue
P2	27.11.15	Design Team Issue
P3	15.12.15	Client Issue
P4	23.12.15	Design Team Issue
P5	15.01.15	Issue for Costing
T1	19.02.16	Tender Issue

date
Nov 2015

client
UCL

scale
1 : 100

drawing
Proposed Fifth Floor Plan

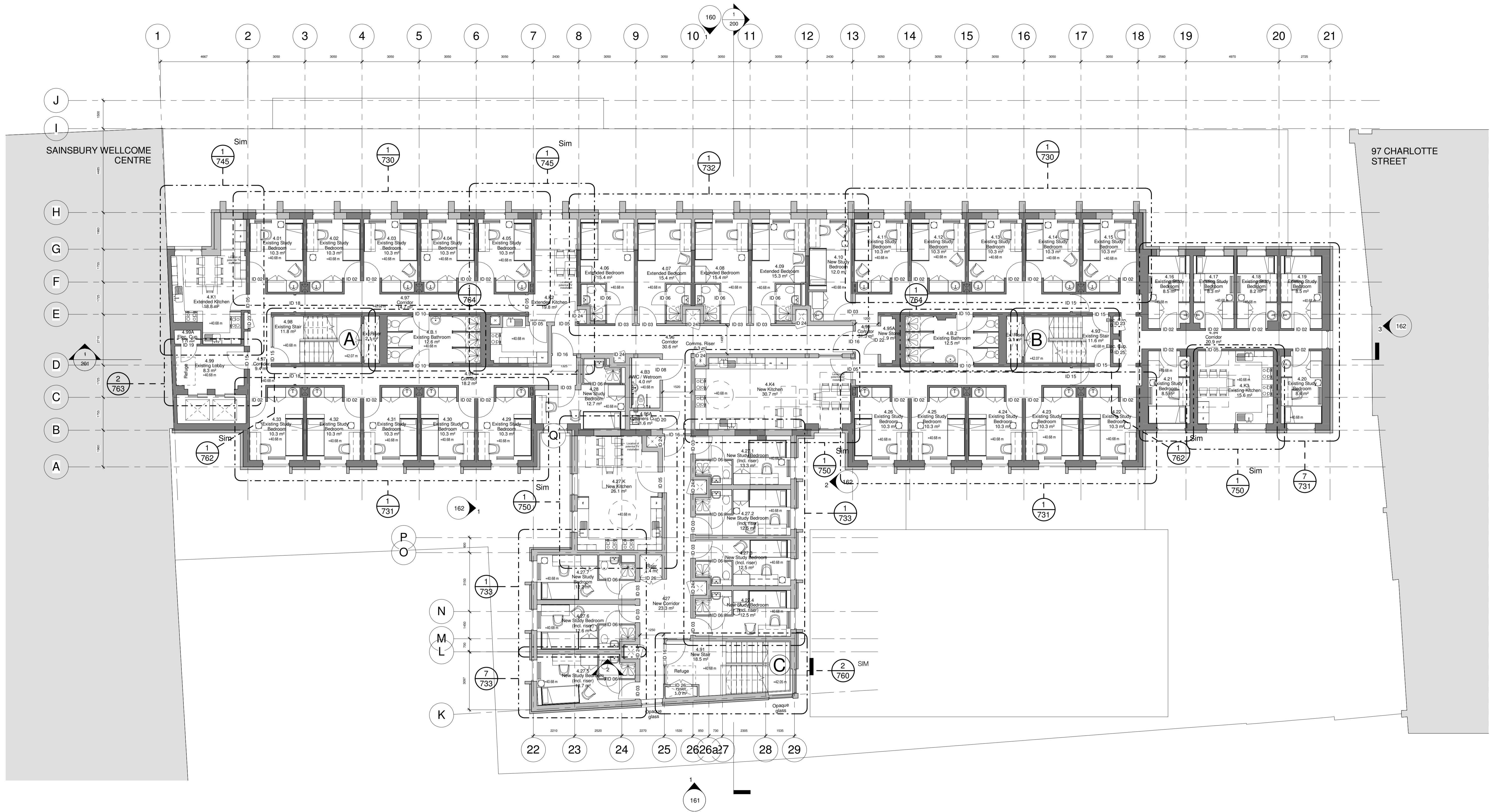
drawn checked drawing number rev
JC KS 2869 · L · 105 T1

C:\Revit Local\2869_Astor College-CENTRAL_andrew.mckay.rvt

Levitt Bernstein
1 Kingsland Passage
London
E8 2BS

t: 020 7275 7676
f: 020 7275 9348
w: levittbernstein.co.uk
e: post@levittbernstein.co.uk

Levitt Bernstein



standard notes

1. Do not scale this drawing.
2. All dimensions must be checked on site and any discrepancies verified with the architect.
3. Unless shown otherwise, all dimensions are to structural surfaces.

THIS IS NOT A CONSTRUCTION DRAWING. IT IS UNSUITABLE FOR THE PURPOSE OF CONSTRUCTION AND MUST ON NO ACCOUNT BE USED AS SUCH.

drawing notes

DESIGN INTENT: These are design intent drawings and do not show full construction information. The Contractor must develop the details, without changing the visual, spatial or other performances, to provide a fully developed scheme including all concealed components such as wind posts, vapour barriers and cavity barriers. All dimensions on this drawing are taken to finished surfaces unless specifically indicated on the dimensions itself.

KEY:

- Proposed building
- Existing building (assumed)

1. Structural information including existing shown indicatively. Refer to Structural Engineers drawings for further information.

Areas out of project scope

revisions

P1	12.11.15	First Revit Issue
P2	27.11.15	Design Team Issue
P3	15.12.15	Client Issue
P4	23.12.15	Design Team Issue
P5	15.01.15	Issue for Costing
T1	19.02.16	Tender Issue

ASTOR COLLEGE, UCL

Charlotte Street, W1T 4QB

date
Nov 2015

client
UCL

scale
1 : 100

drawing
Proposed Fourth Floor Plan

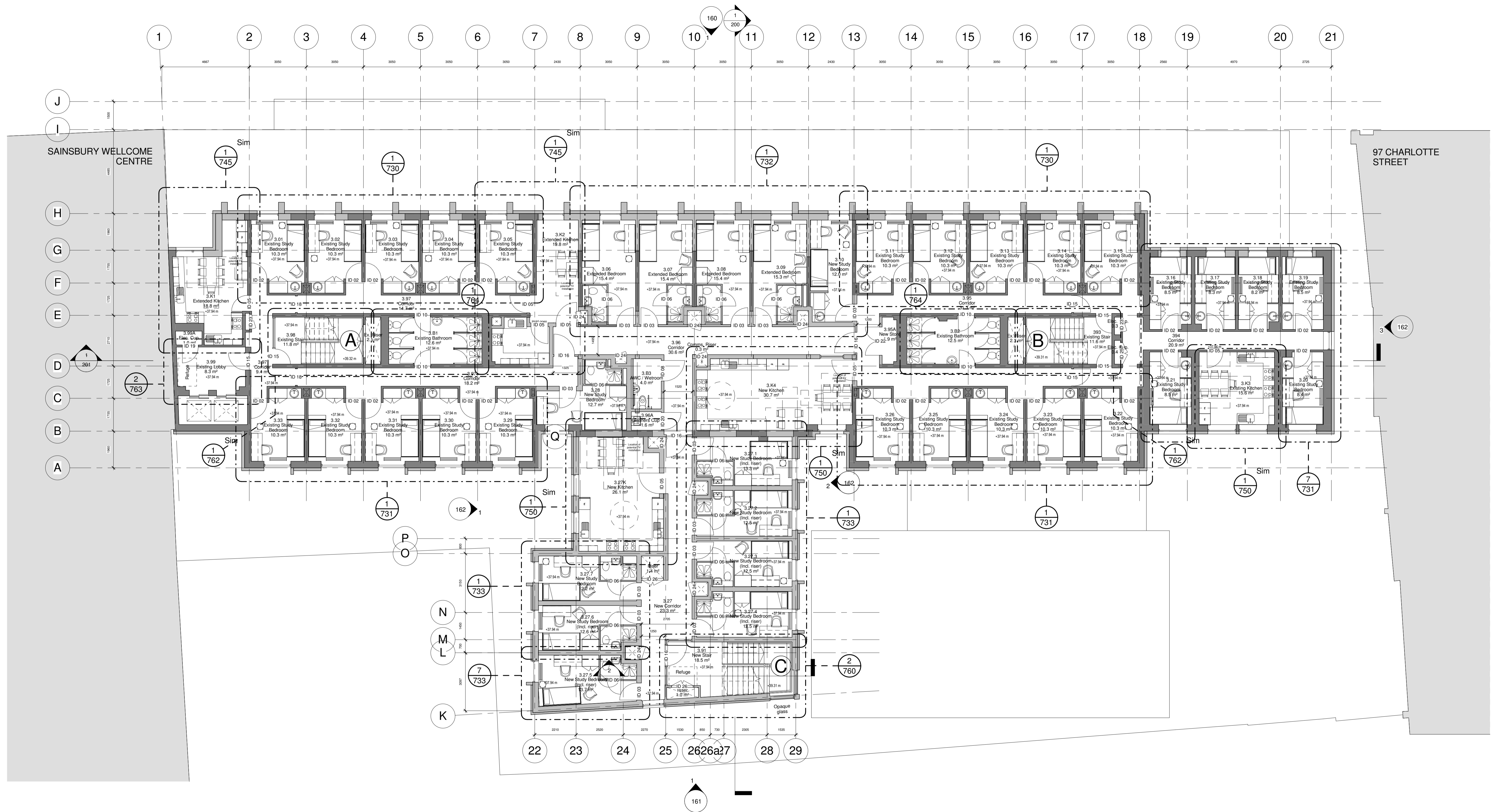
drawn JC
checked KS
drawing number 2869 · L · 104
rev T1

C:\Revit Local\2869_Astor College-CENTRAL_andrew.mckay.rvt

Levitt Bernstein
1 Kingsland Passage
London
E8 2BB

t: 020 7275 7676
f: 020 7275 9348
w: levittbernstein.co.uk
e: post@levittbernstein.co.uk

Levitt Bernstein



ASTOR COLLEGE, UCL

Charlotte Street, W1T 4QB

standard notes

1. Do not scale this drawing.
2. All dimensions must be checked on site and any discrepancies verified with the architect.
3. Unless shown otherwise, all dimensions are to structural surfaces.

THIS IS NOT A CONSTRUCTION DRAWING. IT IS UNSUITABLE FOR THE PURPOSE OF CONSTRUCTION AND MUST ON NO ACCOUNT BE USED AS SUCH.

drawing notes

DESIGN INTENT: These are design intent drawings and do not show full construction information. The Contractor must develop the details, without changing the visual, spatial or other performances, to provide a fully developed scheme including all concealed components such as wind posts, vapour barriers and cavity barriers. All dimensions on this drawing are taken to finished surfaces unless specifically indicated on the dimensions itself.

KEY:

- Proposed building
- Existing building (assumed)

1. Structural information including existing shown indicatively. Refer to Structural Engineers drawings for further information.

Areas out of project scope

revisions

P1	12.11.15	First Revit Issue
P2	27.11.15	Design Team Issue
P3	15.12.15	Client Issue
P4	23.12.15	Design Team Issue
P5	15.01.15	Issue for Costing
T1	19.02.16	Tender Issue

date June 2014

client UCL

scale 1 : 100

drawing Proposed Third Floor Plan

drawn JC

checked KS

drawing number 2869 · L · 103

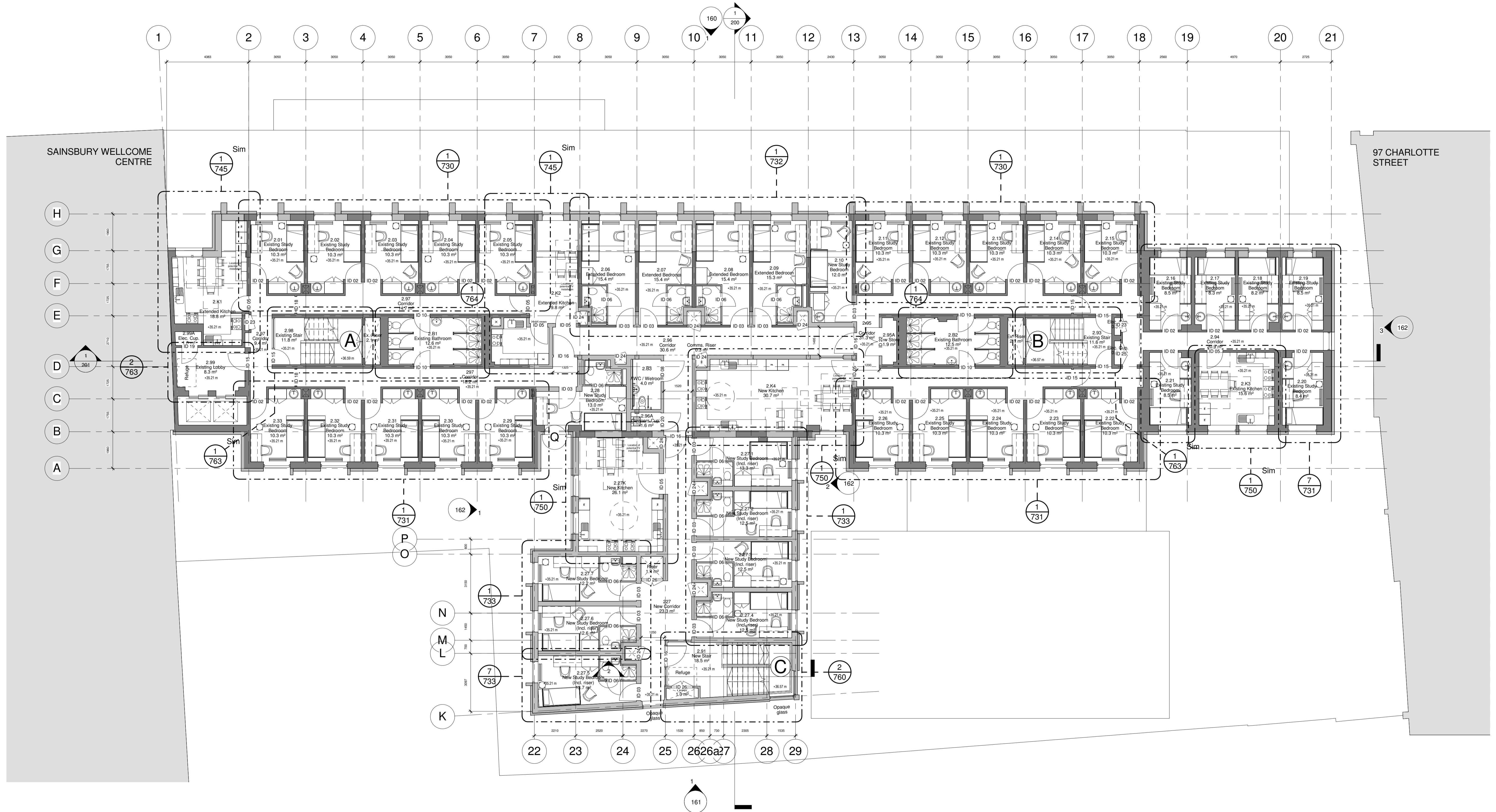
rev T1

C:\Revit Local\2869_Astor College-CENTRAL_andrew.mckay.rvt

Levitt Bernstein
 1 Kingsland Passage
 London
 E8 2BB

t: 020 7275 7676
 f: 020 7275 9348
 w: levittbernstein.co.uk
 e: post@levittbernstein.co.uk

Levitt Bernstein



standard notes

1. Do not scale this drawing.
2. All dimensions must be checked on site and any discrepancies verified with the architect.
3. Unless shown otherwise, all dimensions are to structural surfaces.

THIS IS NOT A CONSTRUCTION DRAWING. IT IS UNSUITABLE FOR THE PURPOSE OF CONSTRUCTION AND MUST ON NO ACCOUNT BE USED AS SUCH.

drawing notes

DESIGN INTENT: These are design intent drawings and do not show full construction information. The Contractor must develop the details, without changing the visual, spatial or other performances, to provide a fully developed scheme including all concealed components such as wind posts, vapour barriers and cavity barriers. All dimensions on this drawing are taken to finished surfaces unless specifically indicated on the dimensions itself.

KEY:

- Proposed building
- Existing building (assumed)

1. Structural information including existing shown indicatively. Refer to Structural Engineers drawings for further information.

Areas out of project scope

revisions

P1	12.11.15	First Revit Issue
P2	27.11.15	Design Team Issue
P3	15.12.15	Client Issue
P4	23.12.15	Design Team Issue
P5	15.01.15	Issue for Costing
T1	19.02.16	Tender Issue

ASTOR COLLEGE, UCL

Charlotte Street, W1T 4QB

date
Nov 2015

client
UCL

scale
1 : 100

drawing
Proposed Second Floor Plan

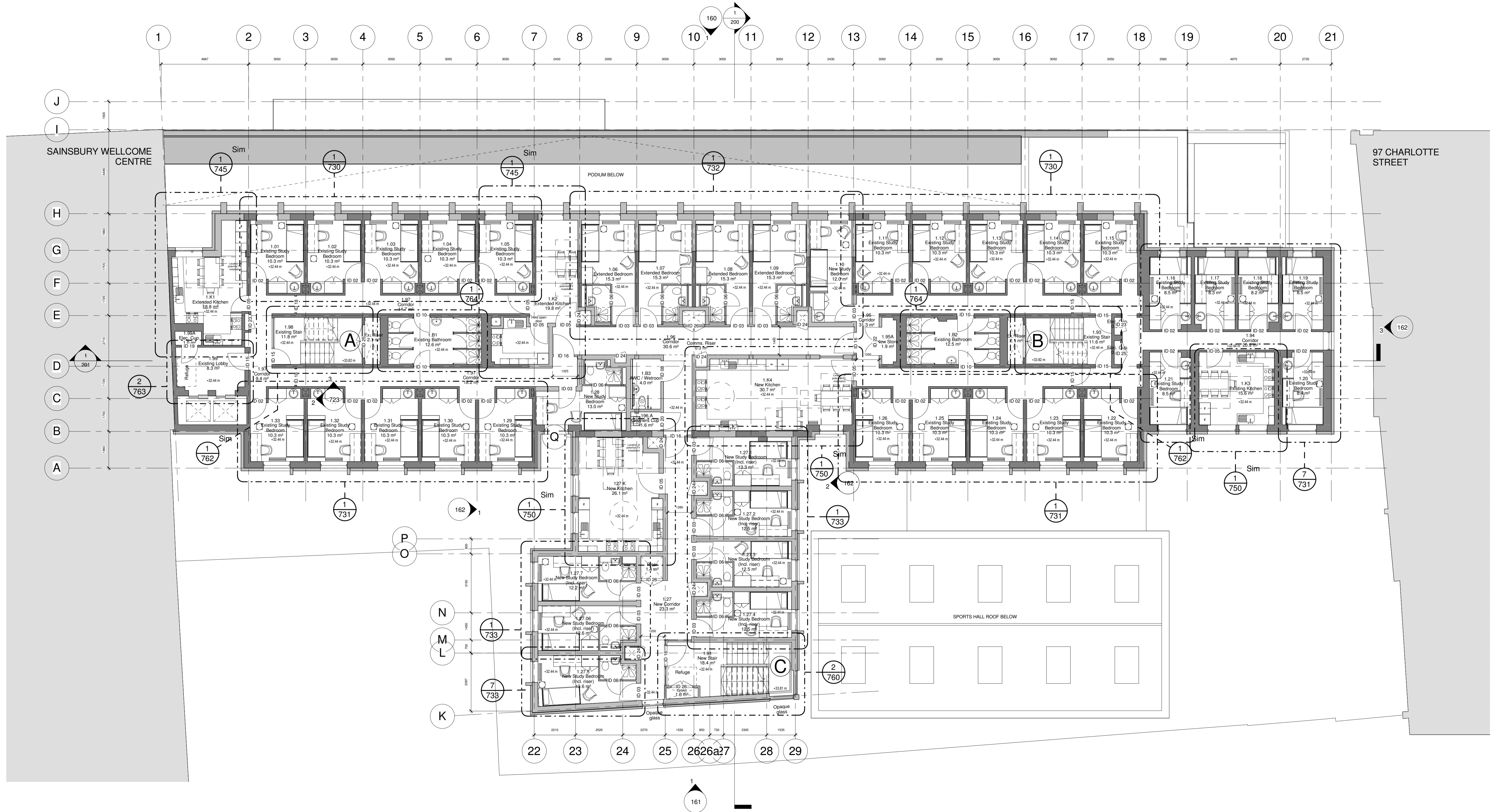
drawn JC
checked KS
drawing number 2869 · L · 102
rev T1

C:\Revit Local\2869_Astor College-CENTRAL_andrew.mckay.rvt

Levitt Bernstein
1 Kingsland Passage
London
E8 2BB

t: 020 7275 7676
f: 020 7275 9348
w: levittbernstein.co.uk
e: post@levittbernstein.co.uk

Levitt Bernstein



ASTOR COLLEGE, UCL

Charlotte Street, W1T 4QB

standard notes

1. Do not scale this drawing.
2. All dimensions must be checked on site and any discrepancies verified with the architect.
3. Unless shown otherwise, all dimensions are to structural surfaces.

THIS IS NOT A CONSTRUCTION DRAWING. IT IS UNSUITABLE FOR THE PURPOSE OF CONSTRUCTION AND MUST ON NO ACCOUNT BE USED AS SUCH.

drawing notes

DESIGN INTENT: These are design intent drawings and do not show full construction information. The Contractor must develop the details, without changing the visual, spatial or other performances, to provide a fully developed scheme including all concealed components such as wind posts, vapour barriers and cavity barriers. All dimensions on this drawing are taken to finished surfaces unless specifically indicated on the dimensions itself.

KEY:

- Proposed building
- Existing building (assumed)

1. Structural information including existing shown indicatively. Refer to Structural Engineers drawings for further information.

Areas out of project scope

revisions

P1	30.06.14	First Issue
P2	17.07.14	Pre-App Meeting
P3	23.07.14	Issue to Design Team
P4	11.08.14	Revised riser locations
P5	29.08.14	Stage C Report
P6	12.09.14	Revised layout following costing exercise
P7	16.09.14	VAT layout revisions
P8	06.10.14	Pre-App Meeting
P9	14.11.14	Issue to Design Team
P10	08.12.14	Principals meeting
P11	09.12.14	Issue to Design Team
P12	19.12.14	For Design Team comment
P13	06.01.14	Issue to Design Team
P14	15.01.15	Rear extension moved
P15	19.01.15	Planning pack issue to UCL

P16	23.01.15	Issue for Planning
P17	04.02.15	Issue for Stage D
P18	14.07.15	Issue for Stage 3
P19	07.10.15	Issue for Stage 3 Addendum
P20	12.11.15	First Revit Issue
P21	27.11.15	Design Team Issue
P22	15.12.15	Client Issue
P23	23.12.15	Design Team Issue
P24	15.01.15	Issue for Costing
T1	19.02.16	Tender Issue

date June 2014

client UCL

scale 1 : 100

drawing Proposed First Floor Plan

drawn JC

checked KS

drawing number 2869 · L · 101

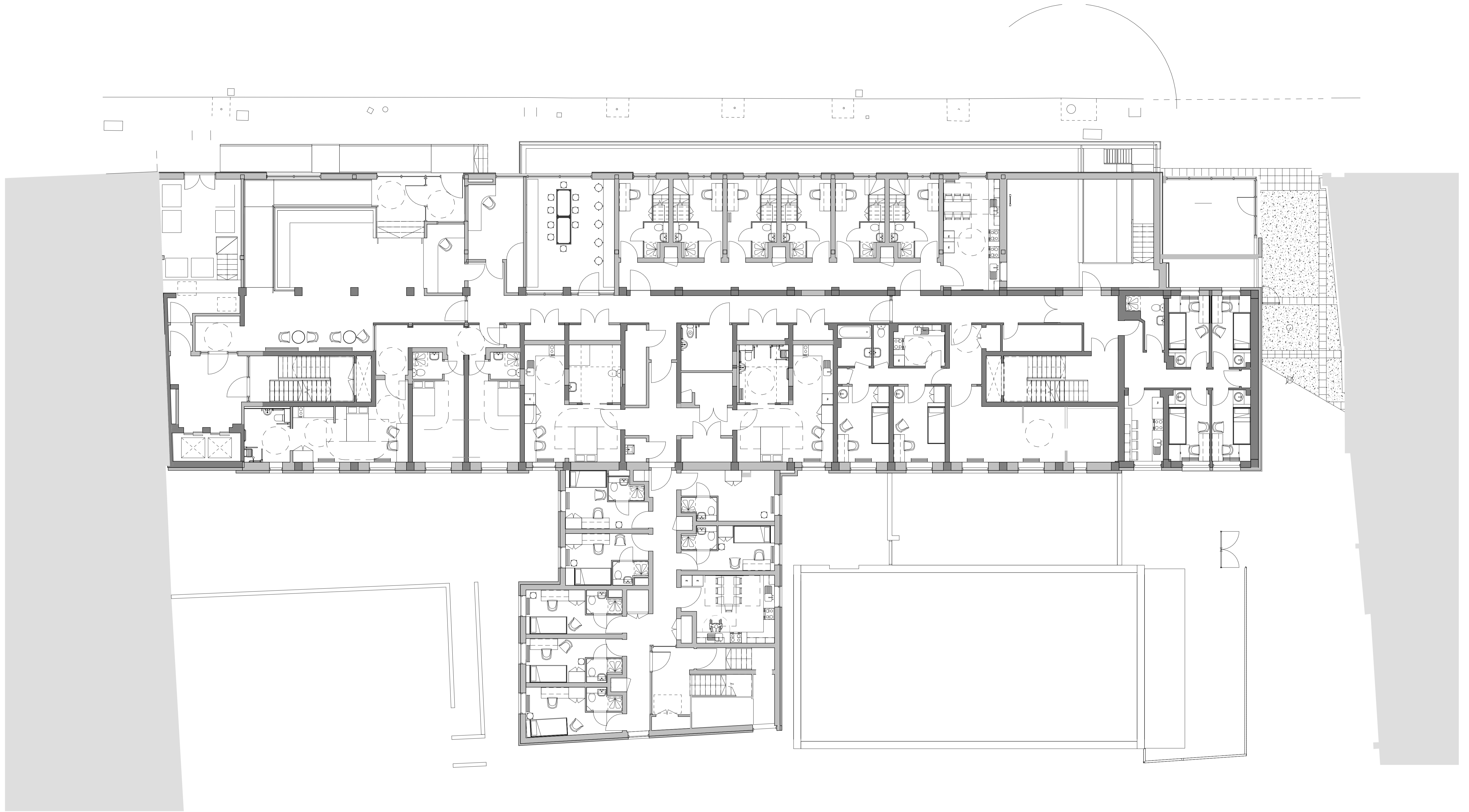
rev T1

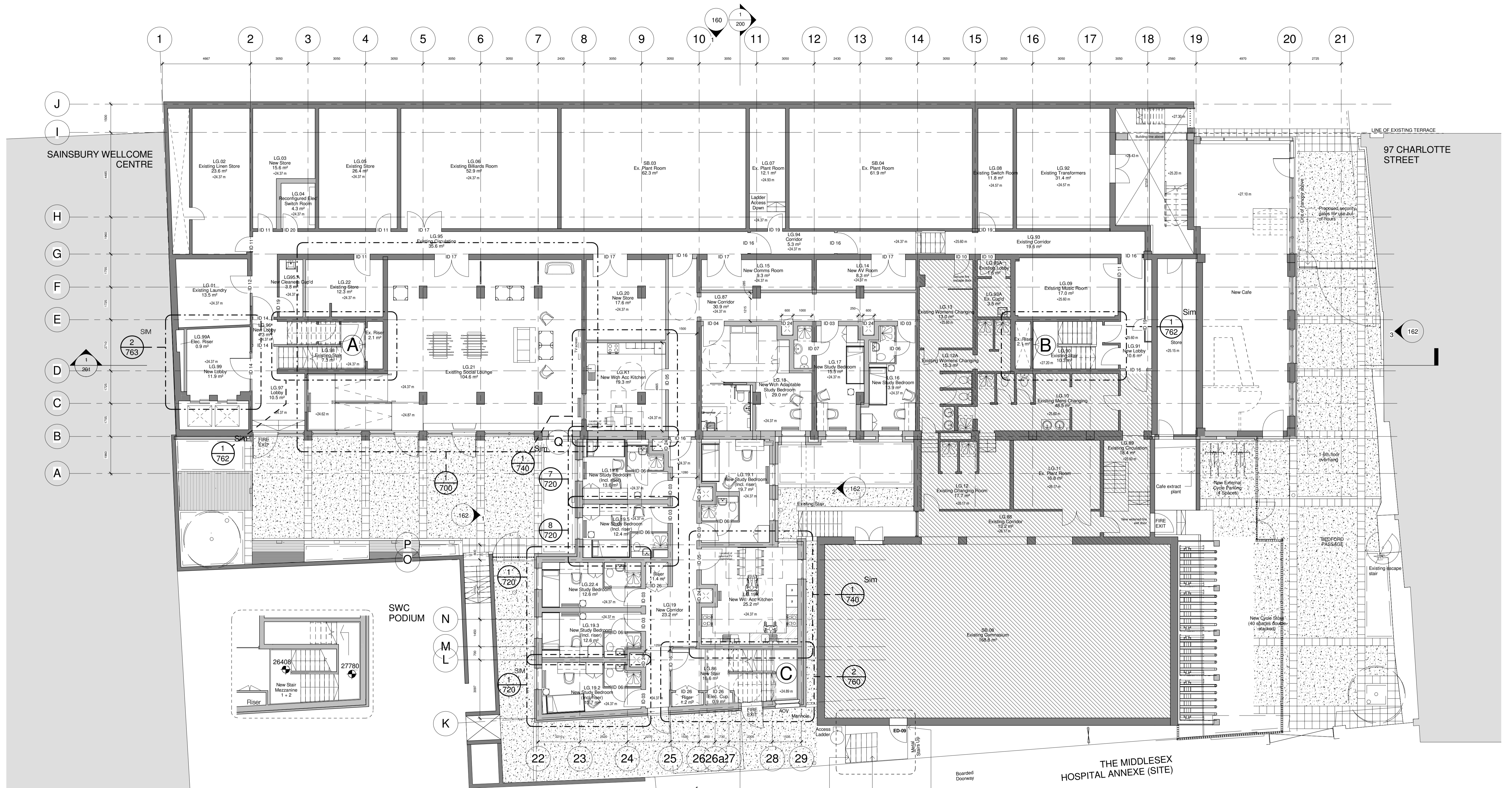
C:\Revit Local\2869_Astor College-CENTRAL_andrew.mckay.rvt

Levitt Bernstein
 1 Kingsland Passage
 London
 E8 2BB

t: 020 7275 7676
 f: 020 7275 9348
 w: levittbernstein.co.uk
 e: post@levittbernstein.co.uk

Levitt Bernstein





ASTOR COLLEGE, UCL

Charlotte Street, W1T 4QB

standard notes

1. Do not scale this drawing.
2. All dimensions must be checked on site and any discrepancies verified with the architect.
3. Unless shown otherwise, all dimensions are to structural surfaces.

THIS IS NOT A CONSTRUCTION DRAWING. IT IS UNSUITABLE FOR THE PURPOSE OF CONSTRUCTION AND MUST ON NO ACCOUNT BE USED AS SUCH.

drawing notes

DESIGN INTENT: These are design intent drawings and do not show full construction information. The Contractor must develop the details, without changing the visual, spatial or other performances, to provide a fully developed scheme including all concealed components such as wind posts, vapour barriers and cavity barriers. All dimensions on this drawing are taken to finished surfaces unless specifically indicated on the dimensions itself.

KEY:

- Proposed building
- Existing building (assumed)

1. Structural information including existing shown indicatively. Refer to Structural Engineers drawings for further information.
 2. Refer to drawing 2869_L_900 for Proposed Landscape Plan

Areas out of project scope

161

revisions

P1	30.06.14	First Issue
P2	17.07.14	Pre-App Meeting
P3	23.07.14	Issue to Design Team
P4	30.07.14	Pre-App submission
P5	11.08.14	Revised riser locations
P6	29.08.14	Stage C Report
P7	11.09.14	Revised common area
P8	12.09.14	Revised layout following costing exercise
P9	16.09.14	VAT layout revisions
P10	30.09.14	Security gate in Bedford Passage
P11	06.10.14	Pre-App Meeting
P12	14.11.14	Retail unit frontage revised
P13	28.11.14	Revisions following pre-application advice
P14	05.12.14	Minor Revisions following client feedback
P15	08.12.14	Principals meeting

P16	19.12.14	For Design Team comments
P17	15.01.14	Rear extension moved
P18	19.01.15	Planning pack issue to UCL
P19	23.01.15	Issue for Planning
P20	04.02.15	Issue for Stage D
P21	14.07.15	Issue for Stage 3
P22	07.10.15	Issue for Stage 3 Addendum
P23	12.11.15	First Revit Issue
P24	27.11.15	Design Team Issue
P25	15.12.15	Client Issue
P26	23.12.15	Design Team Issue
P27	15.01.15	Issue for Costing
T1	19.02.16	Tender Issue

date June 2014

client UCL

scale 1 : 100

drawing Proposed Lower Ground Floor

Plan

drawn JC **checked** KS **drawing number** 2869-L-099 **rev** T1

C:\Revit\Local\2869_Astor College-CENTRAL_joseph.charman.rvt

Levitt Bernstein
 1 Kingsland Passage
 London
 E8 2BB

t: 020 7275 7676
 f: 020 7275 9348
 w: levittbernstein.co.uk
 e: info@levittbernstein.co.uk

Levitt Bernstein