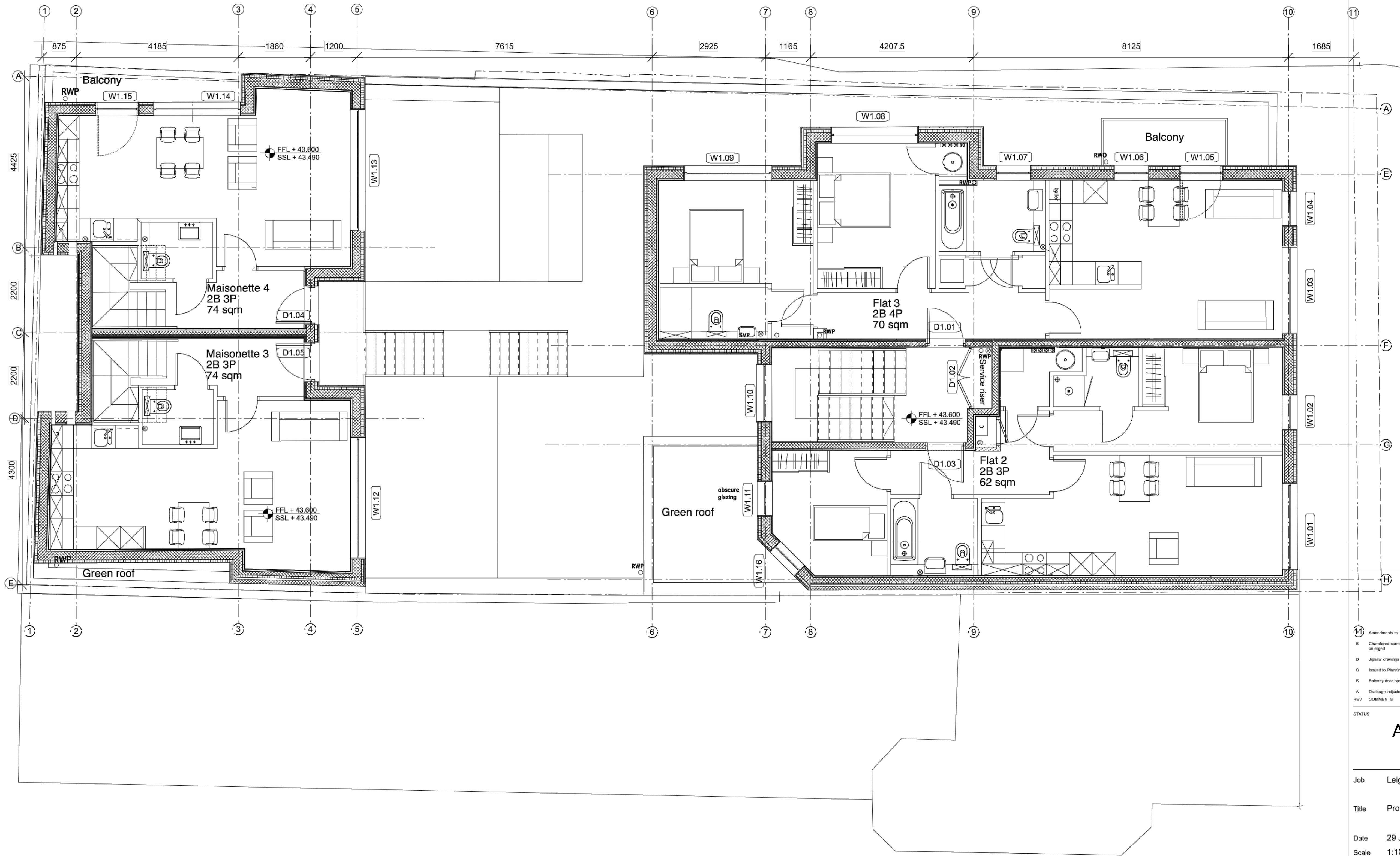


0 5 10 15 20 M

This drawing is prepared for the purposes of a planning application and to show design intent only. The information contained herein must not be used for costing, construction, engineering or any other purposes without agreement in writing from Waugh Thistleton Architects Ltd.

NOTES



REV	COMMENTS	DATE	CHK
11	Amendments to boundaries	3/31/14	RC
E	Chamfered corner added, maisonette balcony windows enlarged	1/8/14	RC
D	Jigsaw drawings imported	11/25/13	RC
C	Issued to Planning	11/15/13	RC
B	Balcony door opening added	11/14/13	RC
A	Drainage adjustments	11/11/13	RC

STATUS

**APPROVED**

Job Leighton Road  
 Title Proposed First Floor Plan  
 Date 29 July 2013  
 Scale 1:100 @ A3  
 Drawn RC

**T-1-482-102**

Waugh Thistleton  
 Architects  
 74 Paul Street  
 London EC2A 4NA  
 Telephone +44 (0)20 7613 5727  
 Fax +44 (0)20 7613 5749  
 email/web waughthistleton.com

architects **Waugh Thistleton**