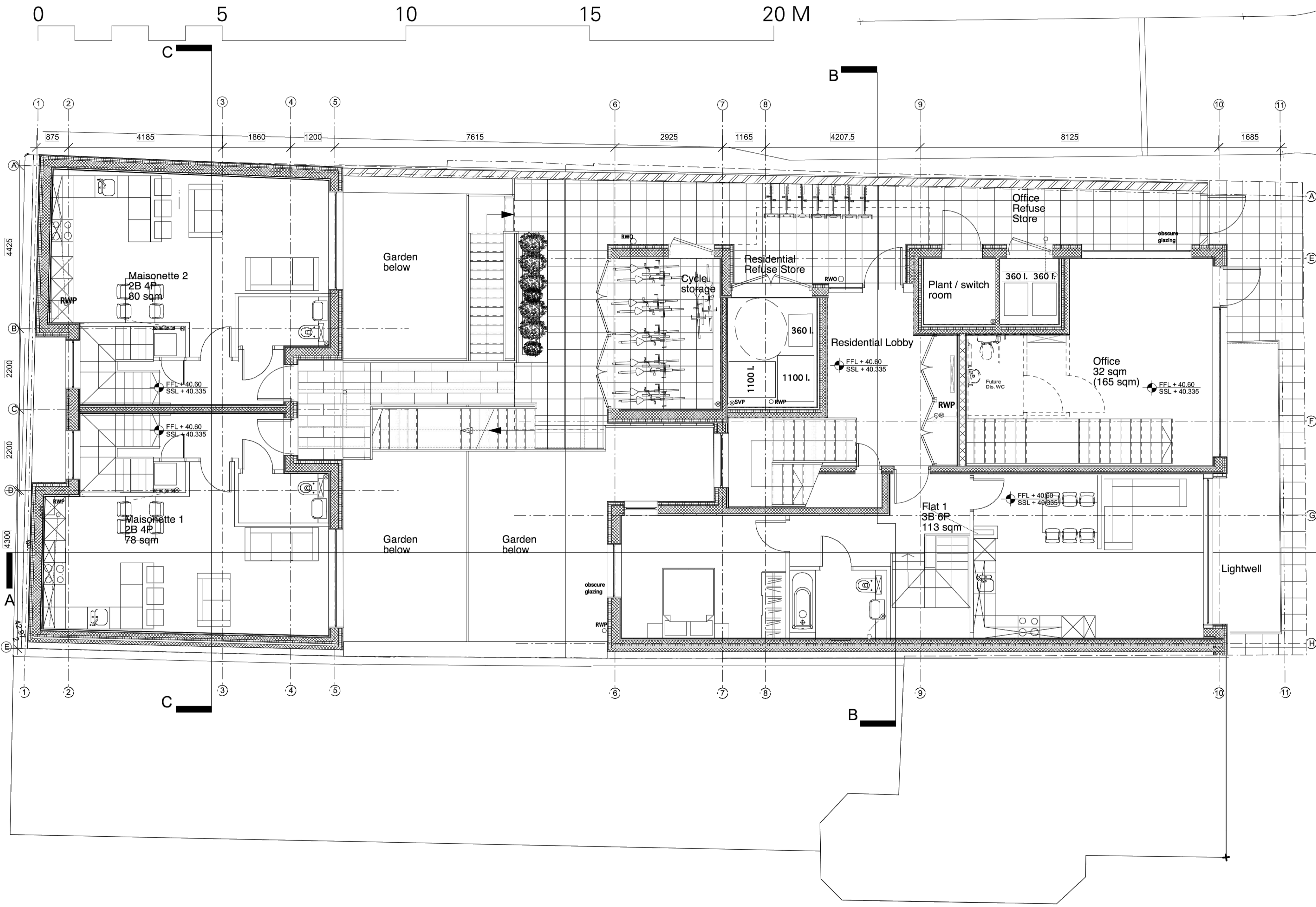


This drawing is prepared for the purposes of a planning application and to show design intent only. The information contained herein must not be used for costing, construction, engineering or any other purposes without agreement in writing from Waugh Thistleton Architects Ltd.



NOTES

H	minor amendments	3/3/14	RC
G	Draft issued with adjustments to boundary	3/18/14	RC
F	Cycle store enclosed	1/8/14	RC
E	Lightwell edge adjusted	12/2/13	RC
D	Cycle storage amended	11/26/13	RC
C	Jigsaw layouts imported	11/25/13	RC
B	Issued for Planning	11/15/13	RC
A	Lightwell reduced and drainage adjustments	11/7/13	RC
REV	COMMENTS	DATE	CHK

STATUS

**APPROVED**

Job Leighton Road  
 Title Proposed Ground Floor Plan  
 Date 29 July 2013  
 Scale 1:100 @ A3  
 Drawn RC

**T-1-482-101**

Waugh Thistleton  
 Architects Ltd  
 1st Floor  
 London EC2A 4NA  
 Telephone  
 +44 (0)20 7613 5727  
 Fax  
 +44 (0)20 7613 5749  
 email/web  
 waughthistleton.com

architects  
**Waugh  
 Thistleton**