

Section A-A' 1:100

NOTES:
 This drawing was approved by Planning Permission 2014/5705/P but was implemented with minor alterations as annotated below.

LEGEND:
 Minor alterations to Approved Plans, Elevations and Sections during the course of construction:

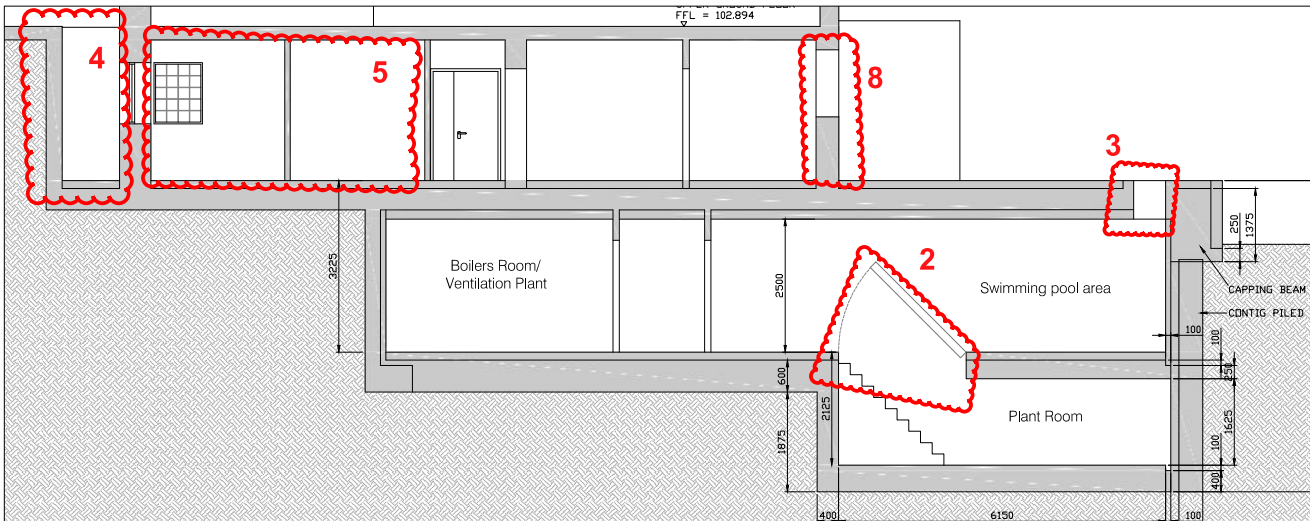
Basement

- 1 Internal compartmentation of ancillary areas reviewed;
- 2 Relocation and resizing of access hatch to Pool Plant Room;
- 3 Addition of 3rd skylight on Pool roof (Roof Terrace above);

Lower Ground Floor

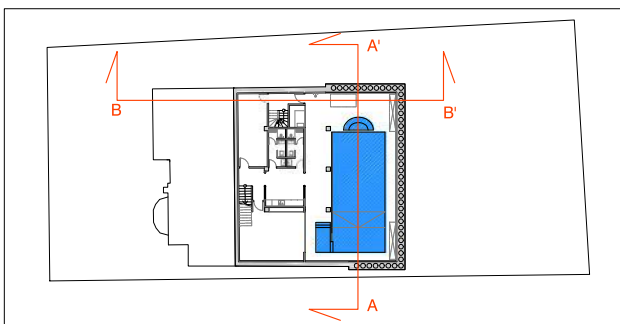
- 4 Omission of planter and associated lightwell in front of Guest Bedroom fenestration, so that the latter opens onto forecourt at front (associated with driveway); new planter by main entrance;

(continued below)



Section B-B' 1:100

(continued from above)



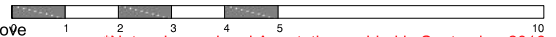
Situation plan 1:500

- 5 Review of layout of Guest Bedroom and Ensuite Bathroom and omission of small window on side facade;
- 6 Dining Room window on side facade omitted;
- 7 Bathroom, Cloakroom, ancillary facilities and access to Dining Room from central corridor reviewed; side entrance door relocated and adjoining window reduced in size;
- 8 Kitchen/Laundry fenestration reviewed to include door giving access to terrace.

Project Title	69 Redigton Rd Refurbish and Extension	N
Site Address	69 Redigton Road, London NW3 7RP	
Drawing Title	Proposed Sections	Approved by 2014/5705/P*
Drawing No.	69RR_2_10 D	Revision 07
Date	03 July 2014	Scale 1:100@A3

Side Elevations and Sections

Pl. refer to annotations 1-7 above



*Notes, Legend and Annotations added in September 2016

NOTES:
This drawing was approved by Planning Permission 2014/5705/P but was implemented with minor alterations as annotated below.

LEGEND:
Minor alterations to Approved Plans, Elevations and Sections during the course of construction:

Basement

- 1** Internal compartmentation of ancillary areas reviewed;
- 2** Relocation and resizing of access hatch to Pool Plant Room;
- 3** Addition of 3rd skylight on Pool roof (Roof Terrace above);

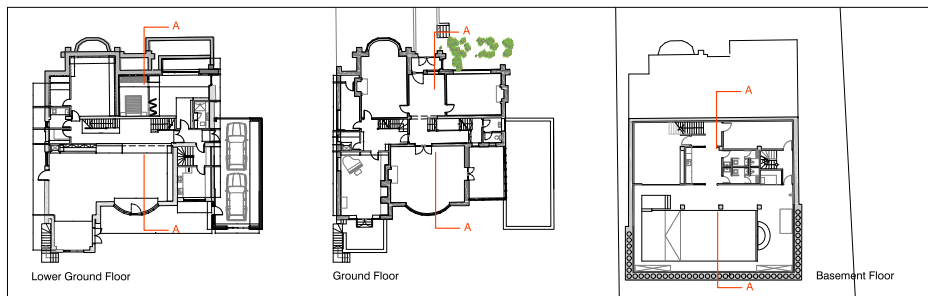
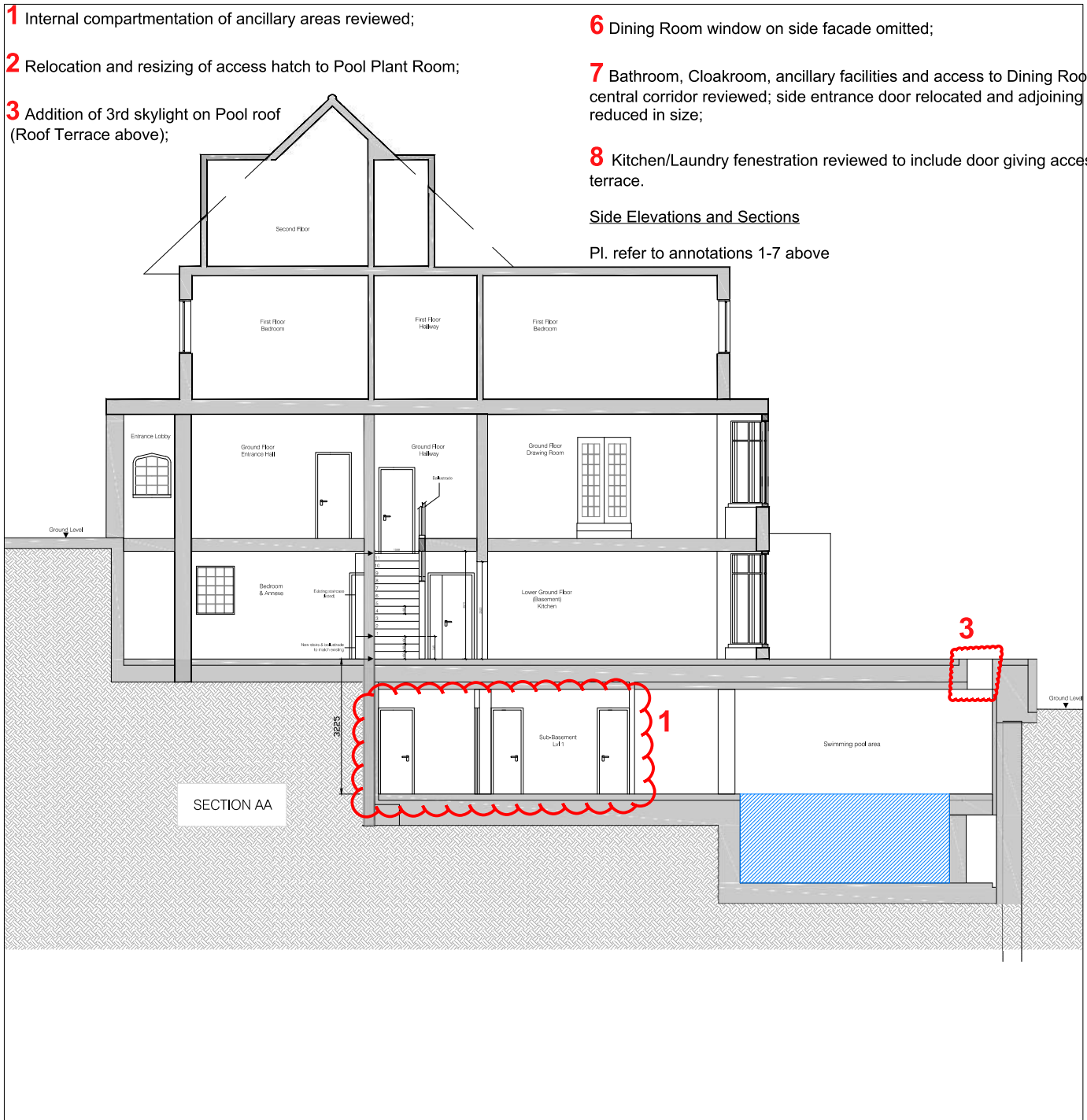
Lower Ground Floor

- 4** Omission of planter and associated lightwell in front of Guest Bedroom fenestration, so that the latter opens onto forecourt at front (associated with driveway); new planter by main entrance;
- 5** Review of layout of Guest Bedroom and Ensuite Bathroom and omission of small window on side facade;

- 6** Dining Room window on side facade omitted;
- 7** Bathroom, Cloakroom, ancillary facilities and access to Dining Room from central corridor reviewed; side entrance door relocated and adjoining window reduced in size;
- 8** Kitchen/Laundry fenestration reviewed to include door giving access to terrace.

Side Elevations and Sections

Pl. refer to annotations 1-7 above



Situation plan 1:500

Project Title	69 Redigton Rd Refurbish and Extension
Site Address	69 Redigton Road, London NW3 7RP
Drawing Title	Proposed North-South section
Drawing No.	69RR PR-Section AA N-S Approved by 2014/5705/P*
Date	01 September 2014 Revision
	Scale 1/100@A3



*Notes, Legend and Annotations added in September 2016