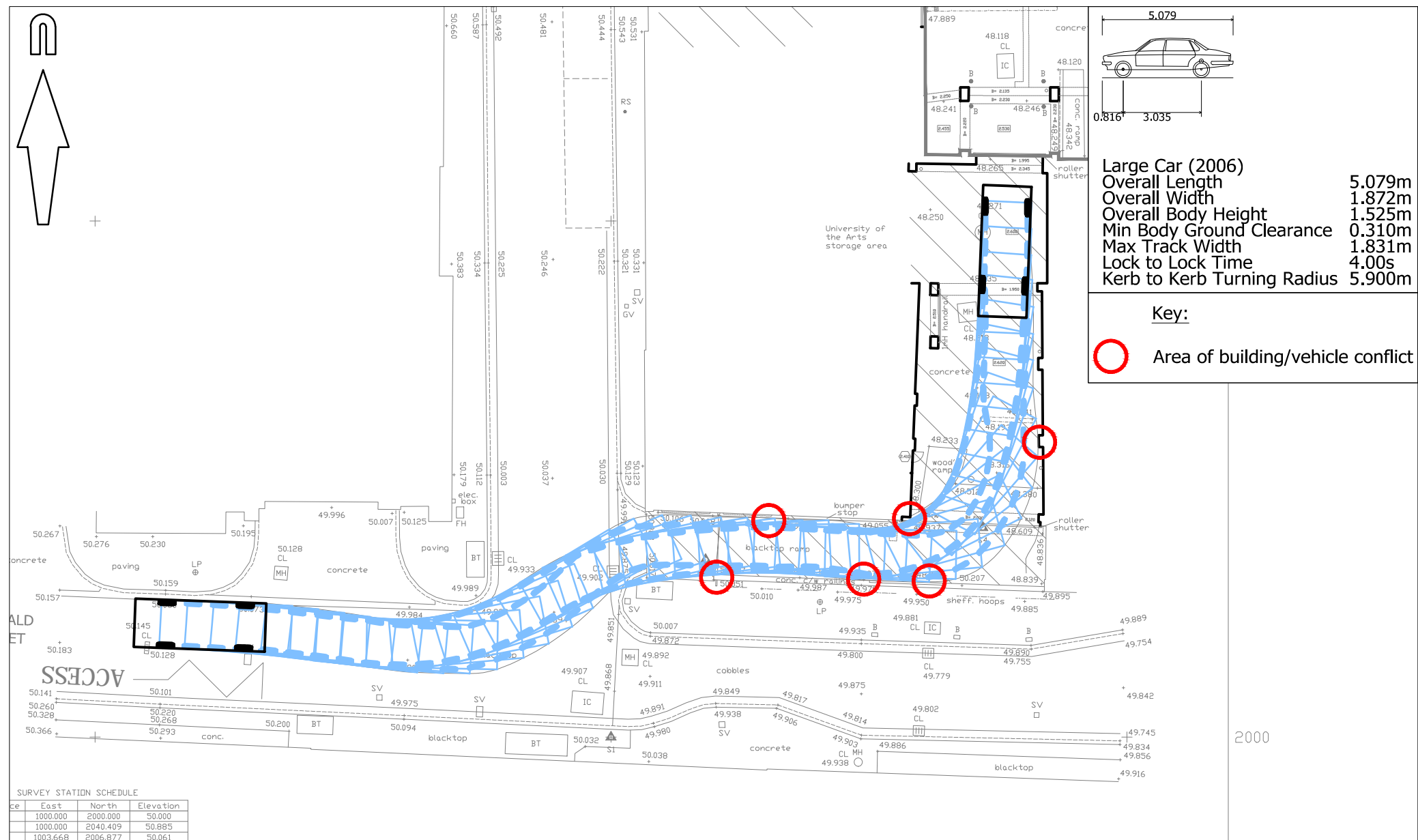


Large Car (2006)
 Overall Length 5.079m
 Overall Width 1.872m
 Overall Body Height 1.525m
 Min Body Ground Clearance 0.310m
 Max Track Width 1.831m
 Lock to Lock Time 4.00s
 Kerb to Kerb Turning Radius 5.900m

Key:

 Area of building/vehicle conflict



SURVEY STATION SCHEDULE

Station	East	North	Elevation
1000.000	2000.000	50.000	
1000.000	2040.409	50.885	
1003.668	2006.877	50.061	

© Crown copyright, all rights reserved. 2016. Licence number 100002189.



Mayer Brown Limited
 Lion House, Oriental Road, Woking, Surrey, GU22 8AR
 Telephone: 01483 750 508 Fax: 01483 750 437
 wokingoffice@mayerbrown.co.uk www.mayerbrown.co.uk

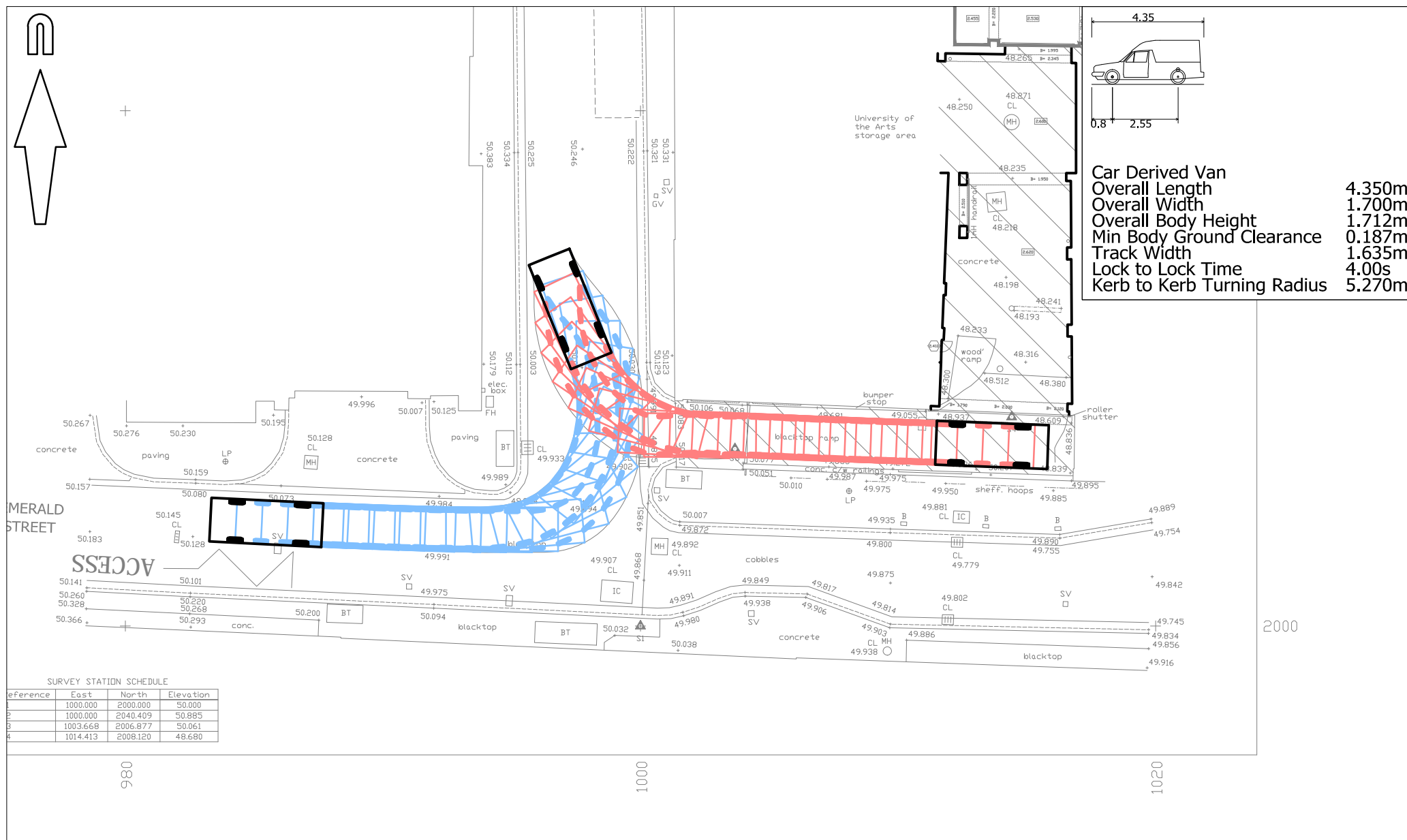
client
MHA LONDON

 project
COLQUHOUN HOUSE
RICHBELL PLACE, LONDON

title
SWEPT PATH ANALYSIS
LARGE CAR ENTERING BASEMENT CAR PARK

scale 1:200 @ A4 | drawn by JME | checked by AP
 date JULY 2016 | cad file MBSK160630.DWG
 drawing number | rev.

FIGURE 3



Car Derived Van
 Overall Length 4.350m
 Overall Width 1.700m
 Overall Body Height 1.712m
 Min Body Ground Clearance 0.187m
 Track Width 1.635m
 Lock to Lock Time 4.00s
 Kerb to Kerb Turning Radius 5.270m

SURVEY STATION SCHEDULE

Reference	East	North	Elevation
1	1000.000	2000.000	50.000
2	1000.000	2040.409	50.885
3	1003.668	2006.877	50.061
4	1014.413	2008.120	48.680

© Crown copyright, all rights reserved. 2016. Licence number 100002189.



Mayer Brown Limited
 Lion House, Oriental Road, Woking, Surrey, GU22 8AR
 Telephone 01483 750 508 Fax 01483 750 437
 wokingoffice@mayerbrown.co.uk www.mayerbrown.co.uk

client
MHA LONDON
 project
COLQUHOUN HOUSE
RICHBELL PLACE, LONDON

title
SWEPT PATH ANALYSIS
CAR DERIVED VAN REVERSING TO SHUTTERS

scale 1:200 @ A4 | drawn by JME | checked by AP

date JULY 2016 | cad file MBSK160630.DWG

drawing number | rev.

FIGURE 4