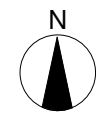
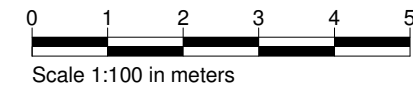


NOTES
 DO NOT SCALE DIMENSIONS OFF THIS DRAWING
 CHECK ALL DIMENSIONS ON SITE BEFORE FABRICATION
 REPORT ALL ERRORS OR OMISSIONS TO SPRUNT LIMITED
 ANY DISCREPANCY TO BE VERIFIED WITH SPRUNT LIMITED BEFORE
 PROCEEDING WITH THE WORKS
 THIS DRAWING IS PROTECTED UNDER COPYRIGHT AND
 SHALL NOT BE REPRODUCED IN PART OR WHOLE WITHOUT PRIOR
 EXPRESSED PERMISSION OF SPRUNT LIMITED

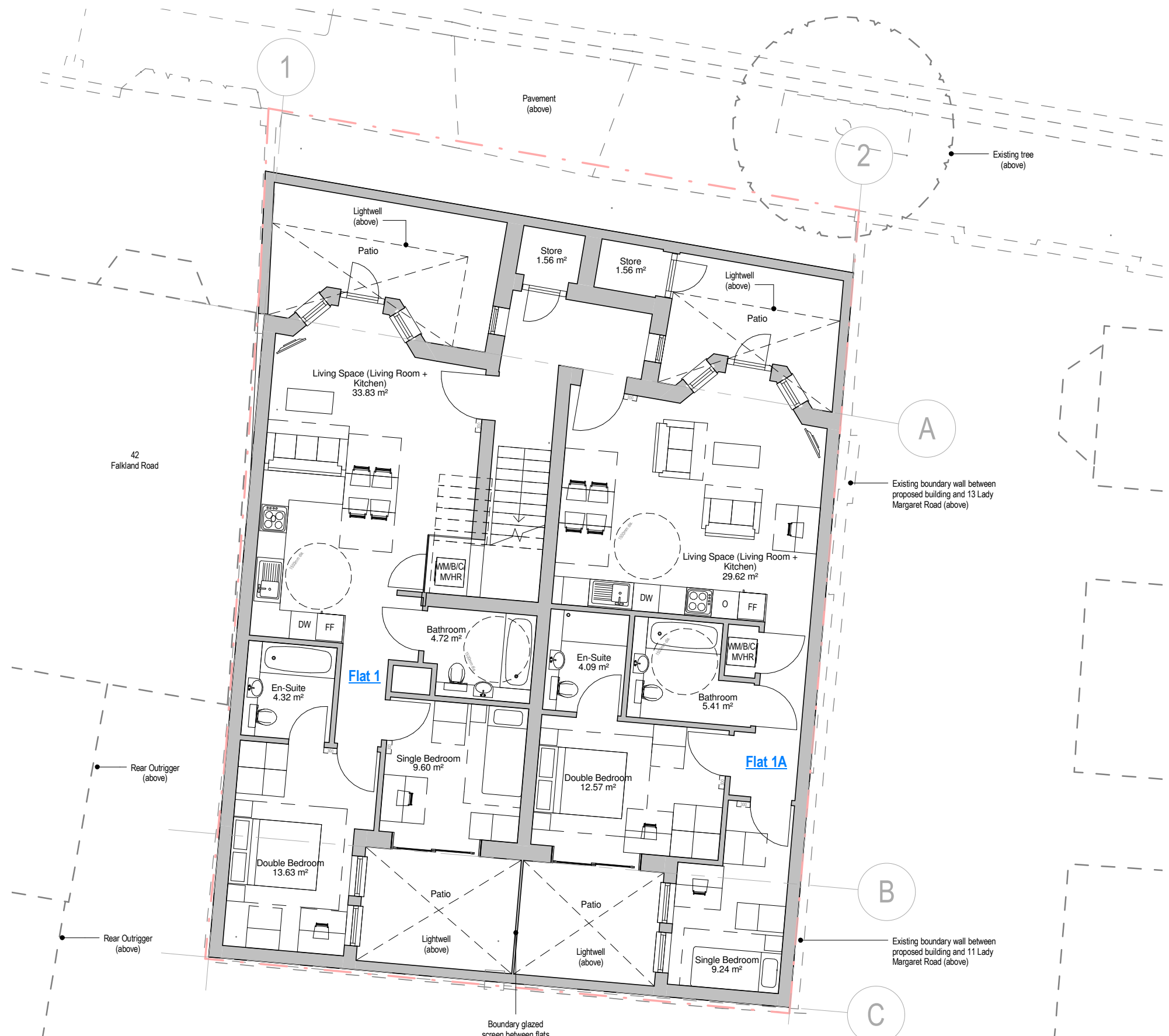
CDM 2015
 ALL CURRENT DRAWINGS AND SPECIFICATIONS FOR THE
 PROJECT MUST BE READ IN CONJUNCTION WITH THE
 DESIGNER'S HAZARD AND ENVIRONMENT ASSESSMENT
 RECORD



GROSS INTERNAL AREA (G.I.A.)

Flat 1 - 2B3P : 70.35 m² / 757.24 sq ft
 Flat 1A - 2B3P : 69.1 m² / 743.79 sq ft

- - - Site Boundary Line



Basement
 1 : 100

3_3	LB	21.11.16	Finalised NM Application
3_2	LB	15.11.16	For NMA Application
3_1	LB	09.11.16	First Issue

REV BY DATE DESCRIPTION
 STATUS

Stage 3

CONTRACTOR
GOLDSMITH

PROJECT
 12516 - FALKLAND ROAD

CLIENT
 Soul Space 2

DRAWING TITLE
 Basement GA

DATE CREATED	DATE AMENDED	SCALE
16.09.16	21.11.16	1 : 100@A3
DRAWN BY	AMENDED BY	CHECKED
LB	LB	JK

DRAWING NO & REVISION
 12516-SPR-XX-AR-15-01-3_3

First Floor, 20 Northdown Street
 London N1 9BG
 T +44 (0)20 7833 3555
 F +44 (0)20 7837 0296
 www.sprunt.net

