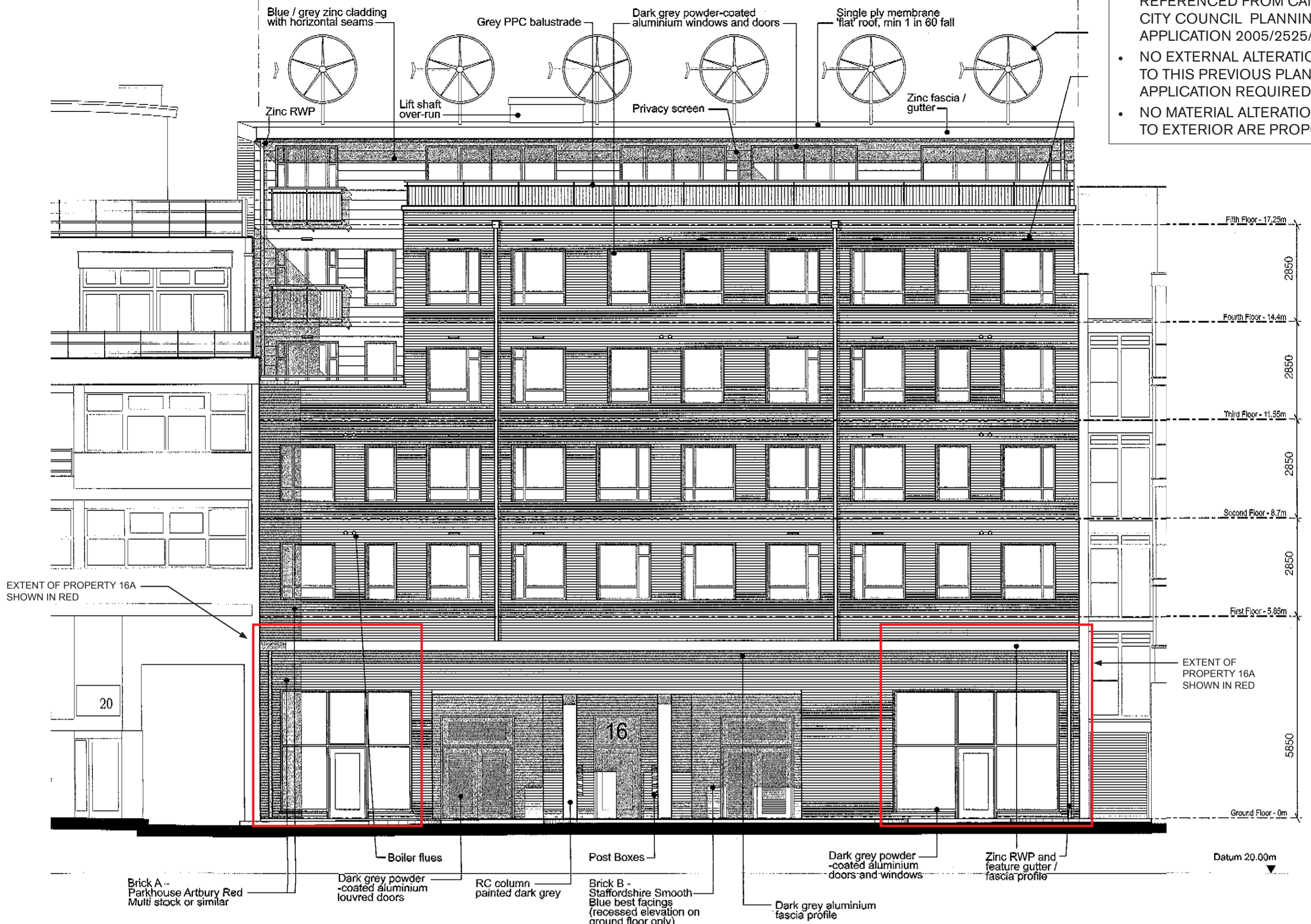


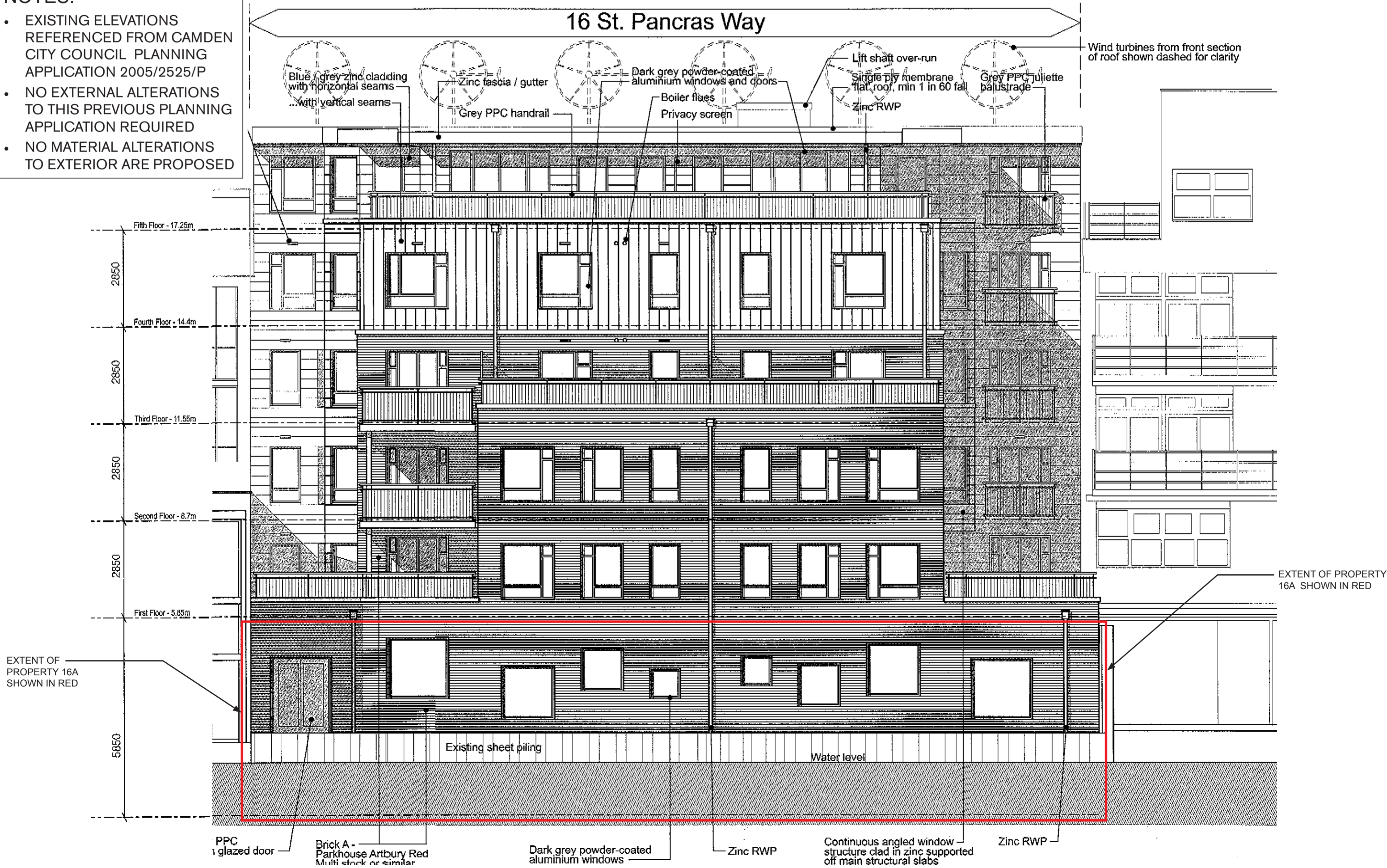
16 St. Pancras Way

- NOTES:**
- EXISTING ELEVATIONS REFERENCED FROM CAMDEN CITY COUNCIL PLANNING APPLICATION 2005/2525/P
 - NO EXTERNAL ALTERATIONS TO THIS PREVIOUS PLANNING APPLICATION REQUIRED
 - NO MATERIAL ALTERATIONS TO EXTERIOR ARE PROPOSED



01 EXISTING SOUTH ELEVATION TO ST PANCRAS WAY

- NOTES:**
- EXISTING ELEVATIONS REFERENCED FROM CAMDEN CITY COUNCIL PLANNING APPLICATION 2005/2525/P
 - NO EXTERNAL ALTERATIONS TO THIS PREVIOUS PLANNING APPLICATION REQUIRED
 - NO MATERIAL ALTERATIONS TO EXTERIOR ARE PROPOSED



02 EXISTING NORTH ELEVATION TO GRAND UNION CANAL