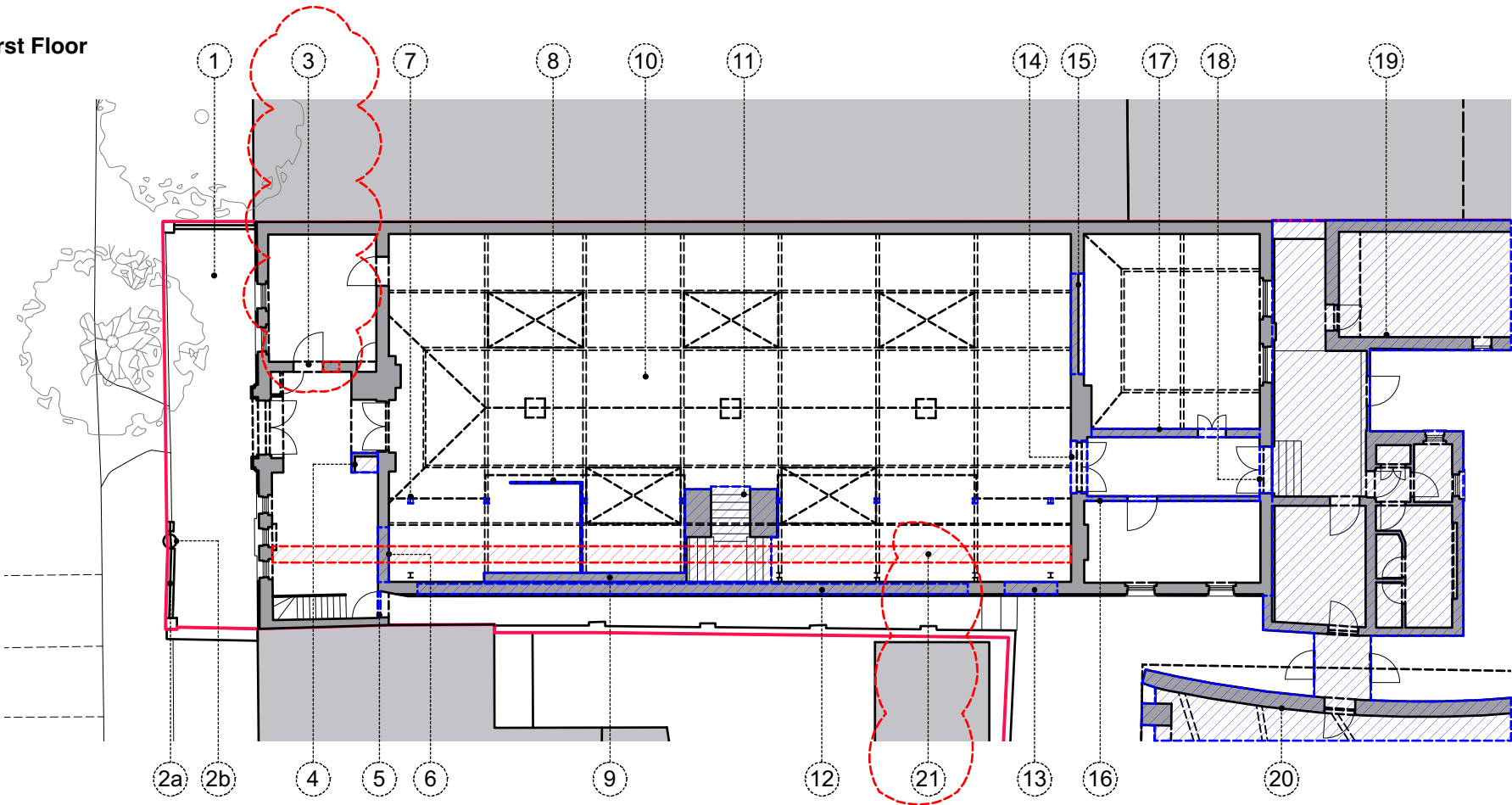


POSTMEN'S SORTING OFFICE - First Floor

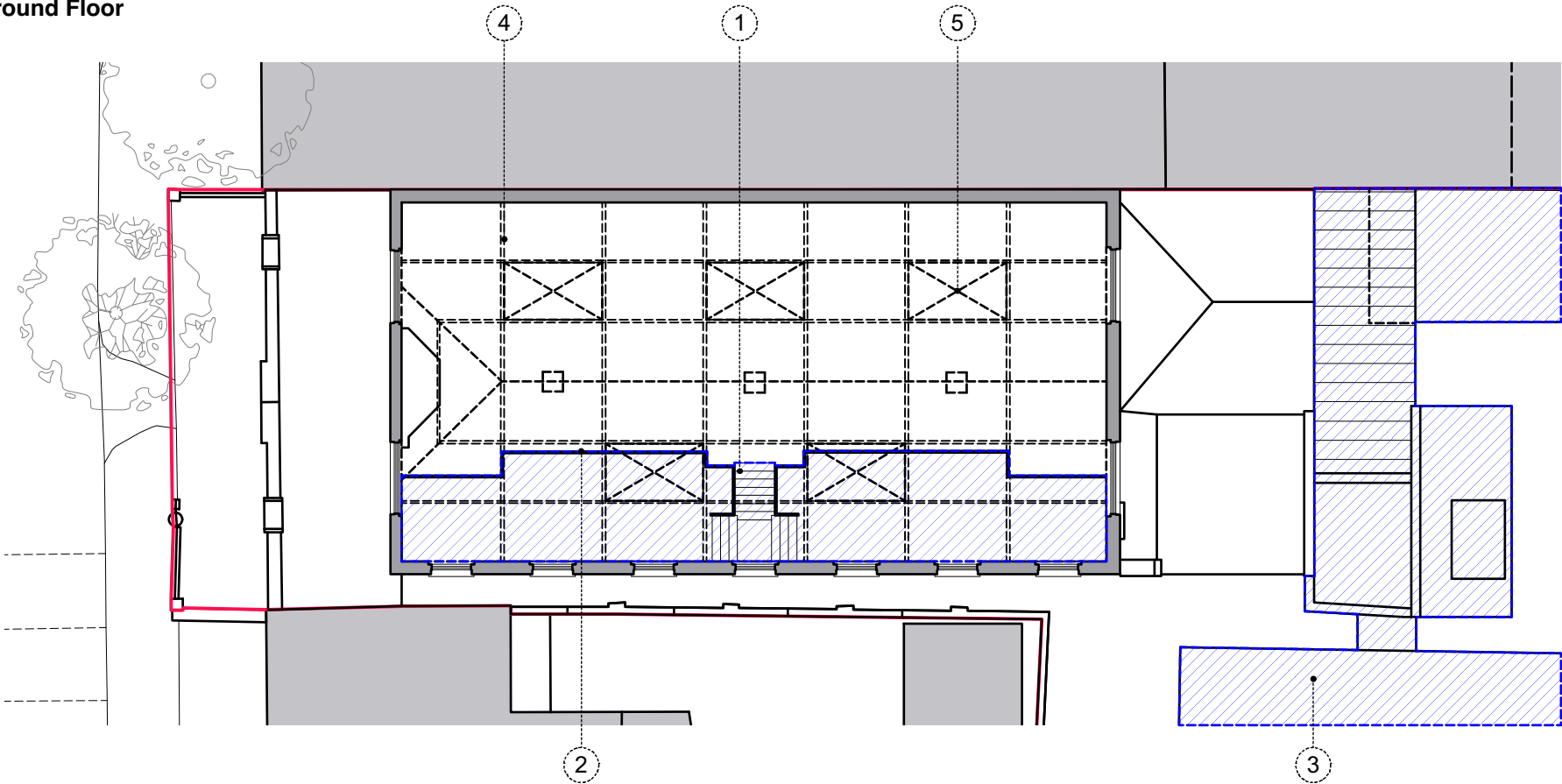
1. Existing tarmac forecourt to be replaced with new hard landscaping.
- 2a. Existing railings bent and encased in later addition, concrete base poured over brick courses out of position. Railings to be removed, repaired and reinstated in refinished base course to original condition.
- 2b. Red Postbox in existing position.
3. Door to be repositioned and opening infilled.
4. Later addition partition wall removed to create more open entrance space.
5. Fire Escape door to be removed and replaced with perforated metal panel on to proposed planted space in existing walkway.
6. Section of wall carefully demolished to create opening to proposed internal walkway.
7. Later addition, steel columns to existing mezzanine to be removed.
8. Later addition, partition wall to be carefully removed.
9. Later addition storage and shelving to be removed.
10. Existing pine parquet floor in herringbone pattern to be carefully lifted and set aside for reuse within the proposed sorting office spaces.





11. Later addition stairs to mezzanine; to be carefully removed.
12. Areas of brickwork beneath windows to be carefully removed and reinstated in a perforated filigree to provide light and air to proposed internal walkway.
13. Lower portion of brickwork to be carefully removed and finished to provide access to internal walkway.
14. Double doors (later addition) to be removed to create opening into office space.
15. Partition (later addition) to existing opening to be removed to create opening into main space.
16. Partition wall to be carefully removed.
17. Partition wall to be carefully removed.
18. Double doors (later addition) to be removed and replaced with window to match others.
19. Later additions to be removed to restore Postmen's Sorting Office to original footprint. Outbuildings and extensions to be carefully removed and brickwork of original sorting office to be repaired.
20. Large studio building to be demolished.
21. Existing floor dug out to install service runs.

POSTMEN'S SORTING OFFICE - Ground Floor

1. Later addition stairs to mezzanine to be carefully removed.
2. Later addition mezzanine to be carefully removed and replaced with newly installed mezzanine.
3. Later additions to be removed to restore Postmen's Sorting Office to original condition.
4. Existing roof trusses retained and repainted.
5. Existing skylights refurbished and redecorated.



DO NOT SCALE OFF THIS DRAWING  
ALL AMBIGUITIES OR DISCREPANCIES  
TO BE REPORTED TO ARCHITECT  
BEFORE COMMENCING

- Notes
-  Previously consented demolitions
-  Proposed additional demolitions

Revisions

Date:	Rev:	Details:
xxxx/16	A	Additional demolitions area marked.

**STUDIO  
MACKERETH**

ARCHITECTS  
7B ST PANCRAS WAY  
LONDON  
NW1 0PB

TELEPHONE + 4 4 (0)20 7042 8335  
EMAIL: INFO@STUDIOMACKERETH.COM

Project  
30 Leighton Road

Drawing Title  
Postmen's Office Demolitions

Scale	Creation Date	Status
1:200 @ A3	April 2015	Plan

Project No.	Drawing No.	Revision
015	030	A