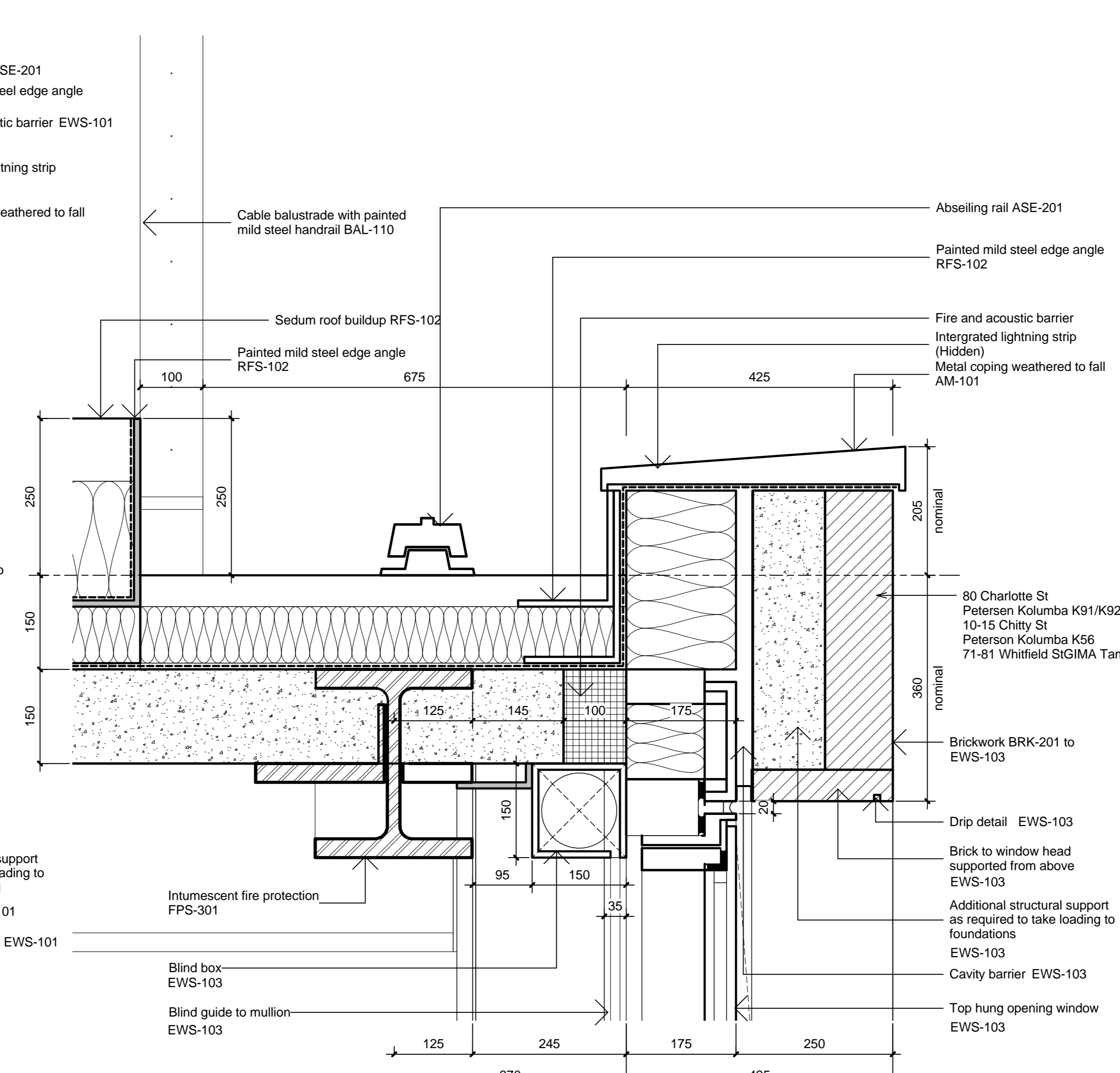
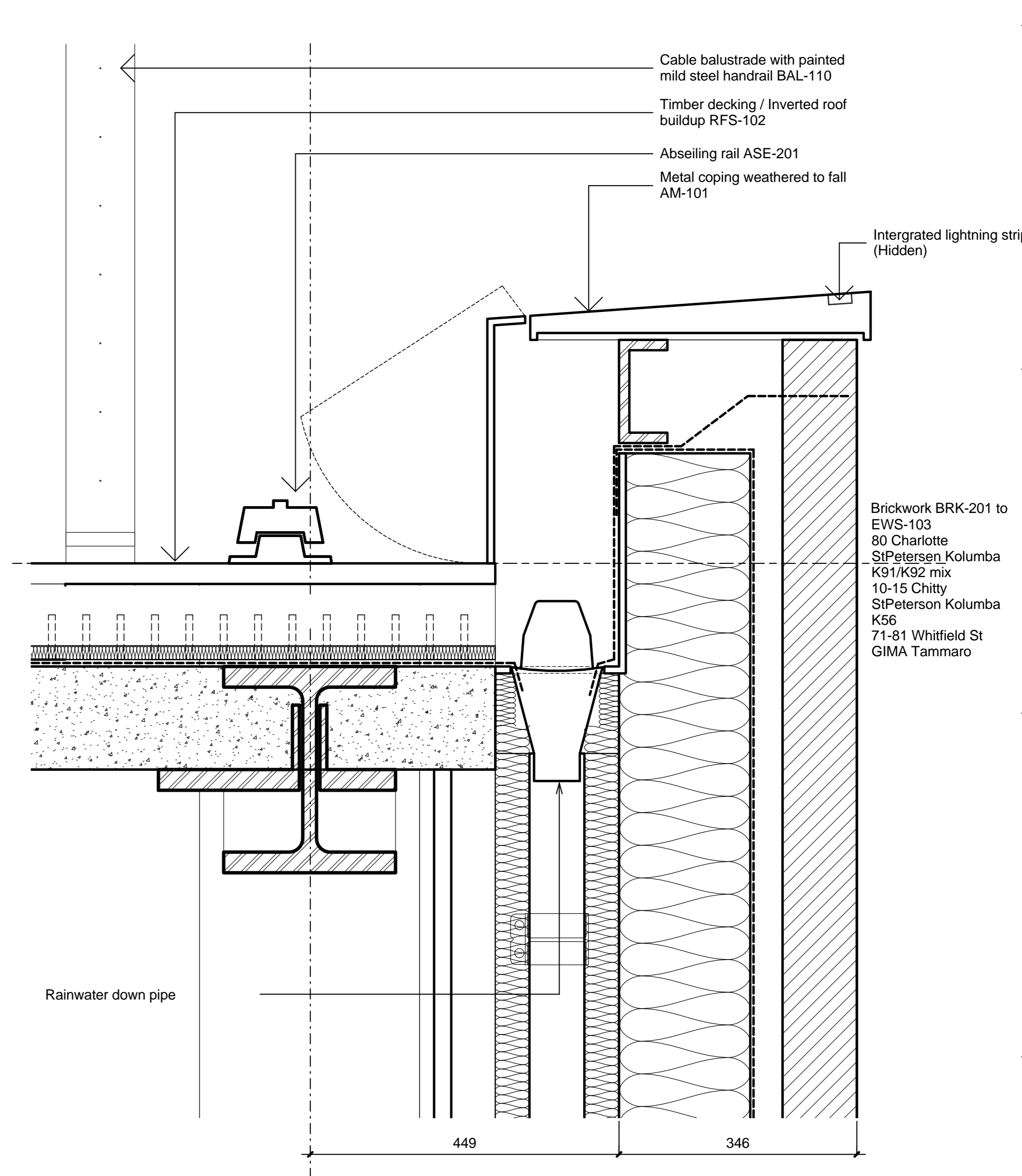


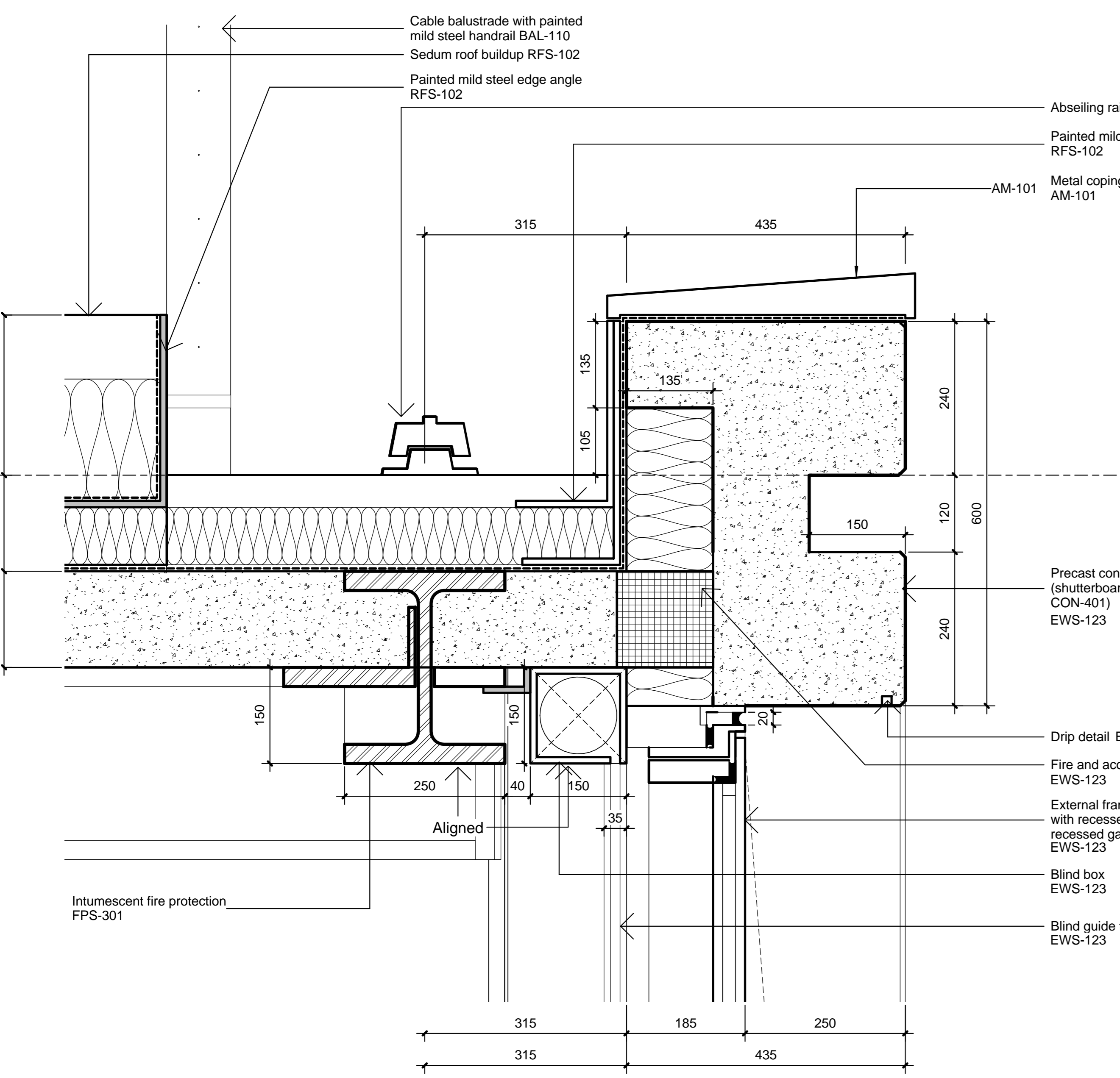
01 Section_EWS-101_Typical Parapet Level 06



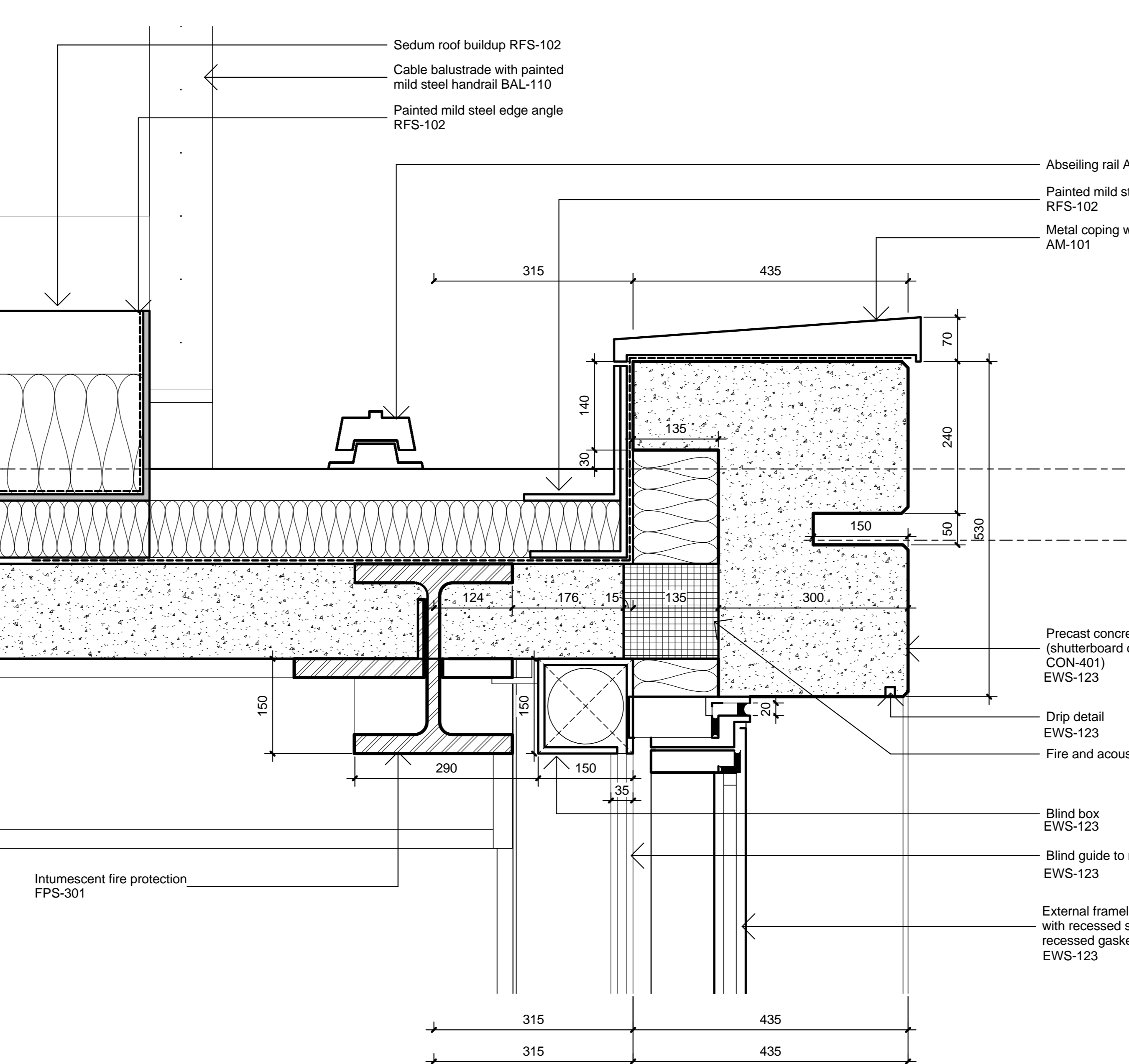
02 Section_EWS-103_Parapet Detail Level 08



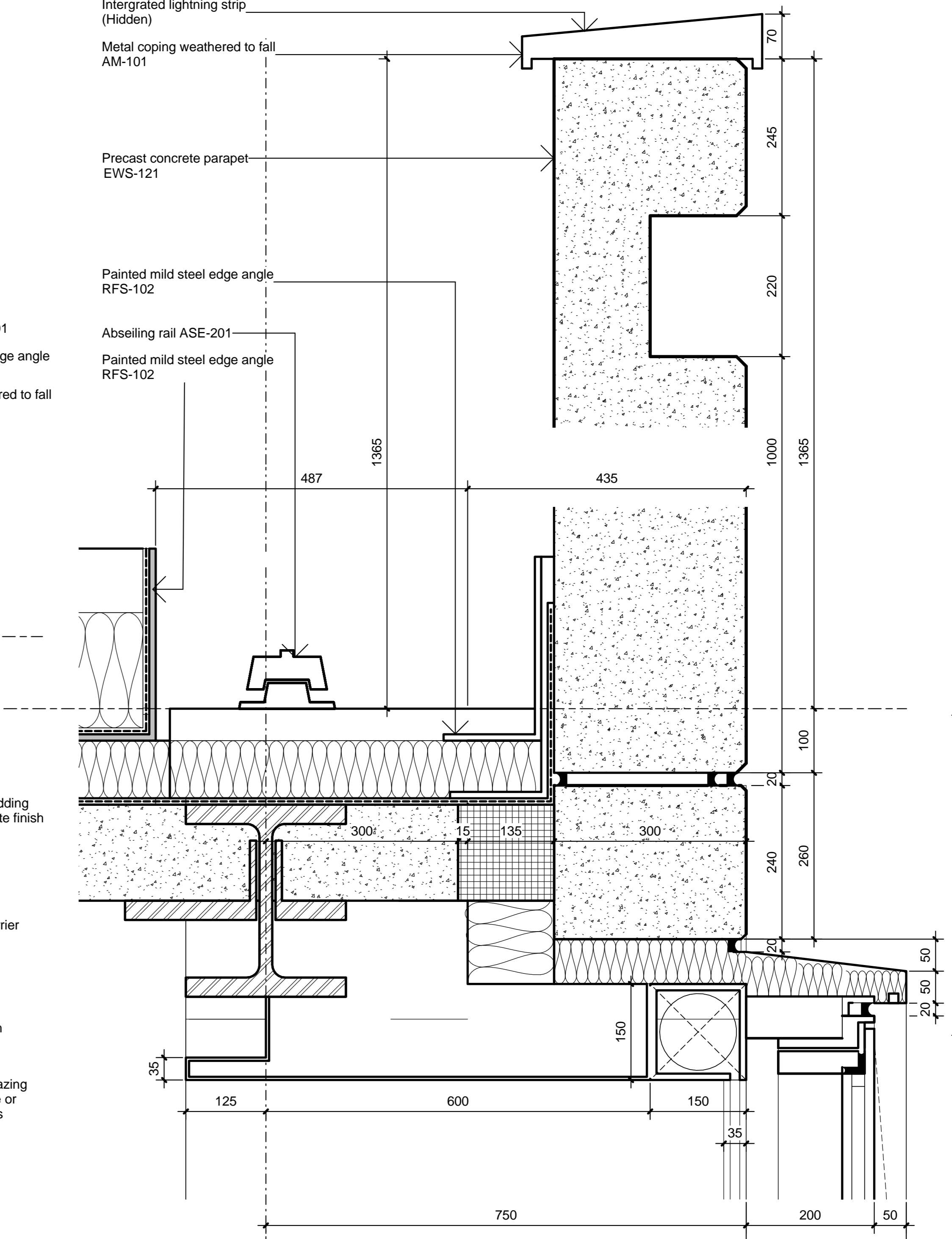
03 EWS-101 Typical detail at roof perimeter



04 Section_EWS-123_Detail Level 06 - 07 parapet



05 Section_EWS-123_Level 8 parapet



06 Section_EWS-121 Level 07 parapet

- General Notes
- Dimensions are in millimetres unless stated otherwise.
 - Levels are in metres AOD unless stated otherwise.
 - Dimensions govern.
 - All dimensions to be verified on site before proceeding.
 - All discrepancies to be notified in writing to Make Limited.

- © Make Limited 2014
- NOTES:
- All new and retained existing structure (walls, columns and downstands beams) to be confirmed by Structural Engineer.
 - All plant areas and services routes (sizes, locations, and routes) to be confirmed by Mechanical Engineer.
 - Changes to the envelope from the consented planning scheme are to be reviewed and confirmed by Planning Consultant.
 - Client to confirm Ground and Lower Ground retail strategy. Planning consent for LG/GF A1 retail limited to a maximum of 2,499sq.m, with A3 Use on Howland/Whitfield St corner. Refer to M&E consultant report for current M&E retail allowance.
 - VRF's to perimeter of LG/GF are required if used as office.
 - Access strategy to Ground and Lower Ground floors from street level is to be developed based on Use type and space planning.
 - Part-M & DDA compliance (disabled toilets, ramps) to be reviewed by access consultant.
 - Cleaning & maintenance to be reviewed (atrium, facade) by building maintenance consultant.
 - Existing structure based on Arup original design drawings & PCA Survey (2010).
 - New Structure based on engineers information.
 - Terraces, landscaping, park, roof plant, and residential layouts illustrative, refer to separate reports.
 - Additional terraces and changes to atrium to be confirmed by planning authority.
 - Acoustic performance to be confirmed by acoustic consultant.
- NOTE: Any areas measured from these plans by a quantity surveyor, relate to the likely areas of the building at the current stage of the design. Any decisions to be made on the basis of these predictions, whether as to project viability, pre-letting, lease agreement or the like should include due allowance for the increases and decreases inherent in the design development and building processes.

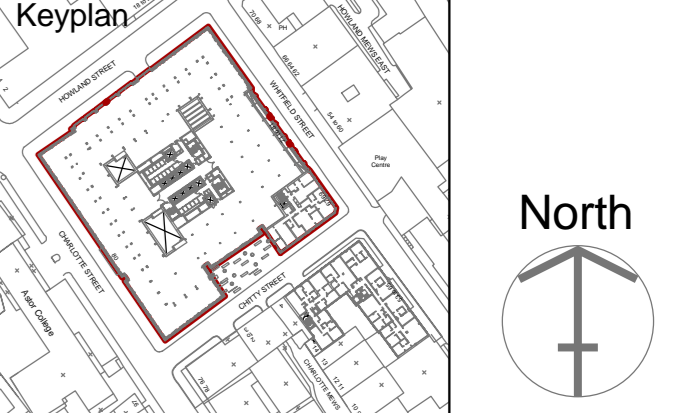
02/24/10/16	Discharge of Conditions	RM
01/13/03/15	Discharge of Conditions	MT
00/20/12/12	Discharge of Conditions	MT

REV	Date	Description	Chk
-----	------	-------------	-----

FOR PLANNING
DRAWING STATUS

make
32 Cleveland Street,
London, W1T 4JY
tel +44 (0) 20 7636 5151
info@makearchitects.com
www.makearchitects.com

Client
Derwent London
West London and Suburban
Property Investments Ltd.
W1S 2ER



Project
80 Charlotte Street

Drawing Title
EWS-101/ 103/ 120/ 121/ 123
Typical parapet details

Scale 1 : 5
Paper Size @A0
Date 20.12.12

Project No.	Draw No.	Rev No.
0825	P3212	02