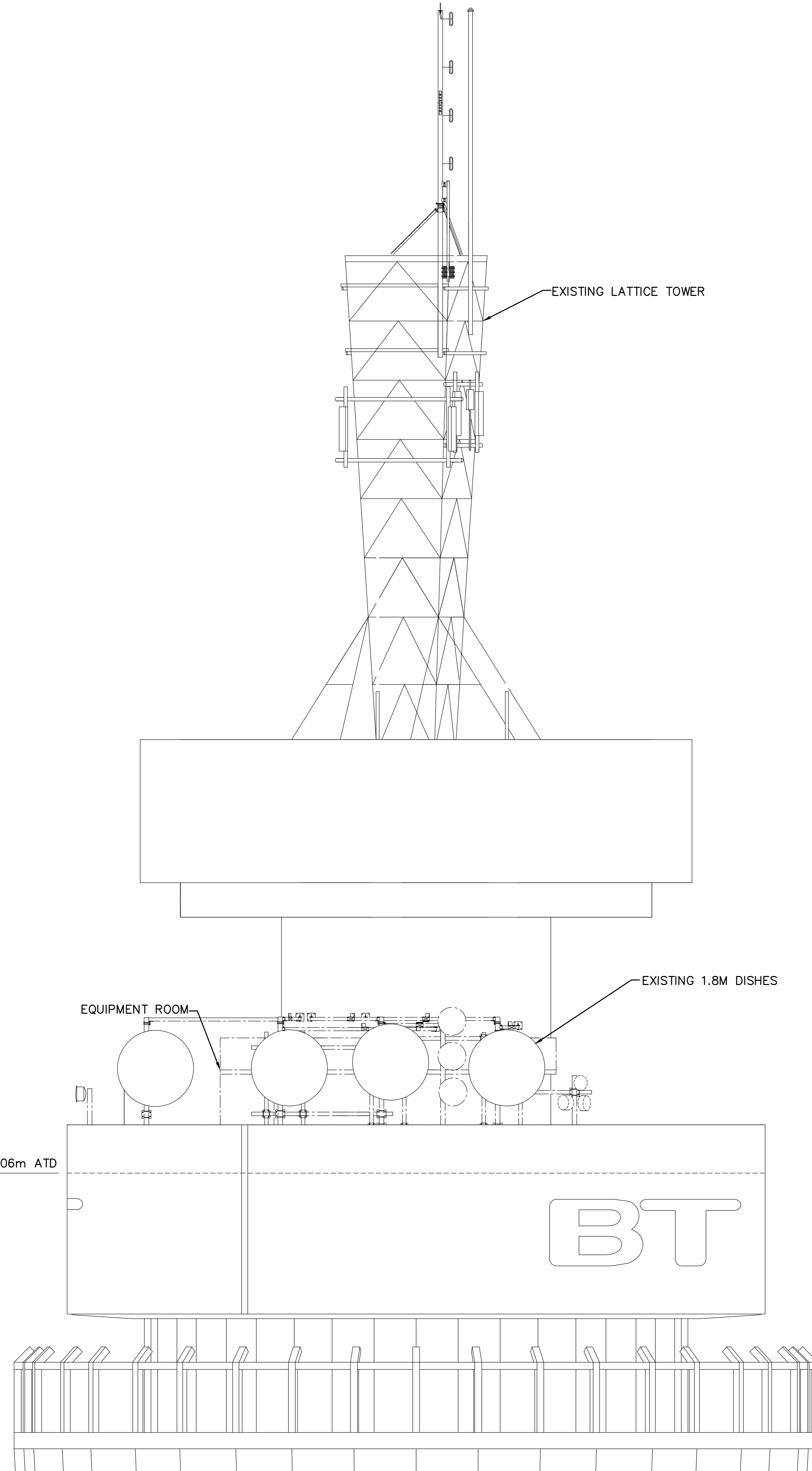
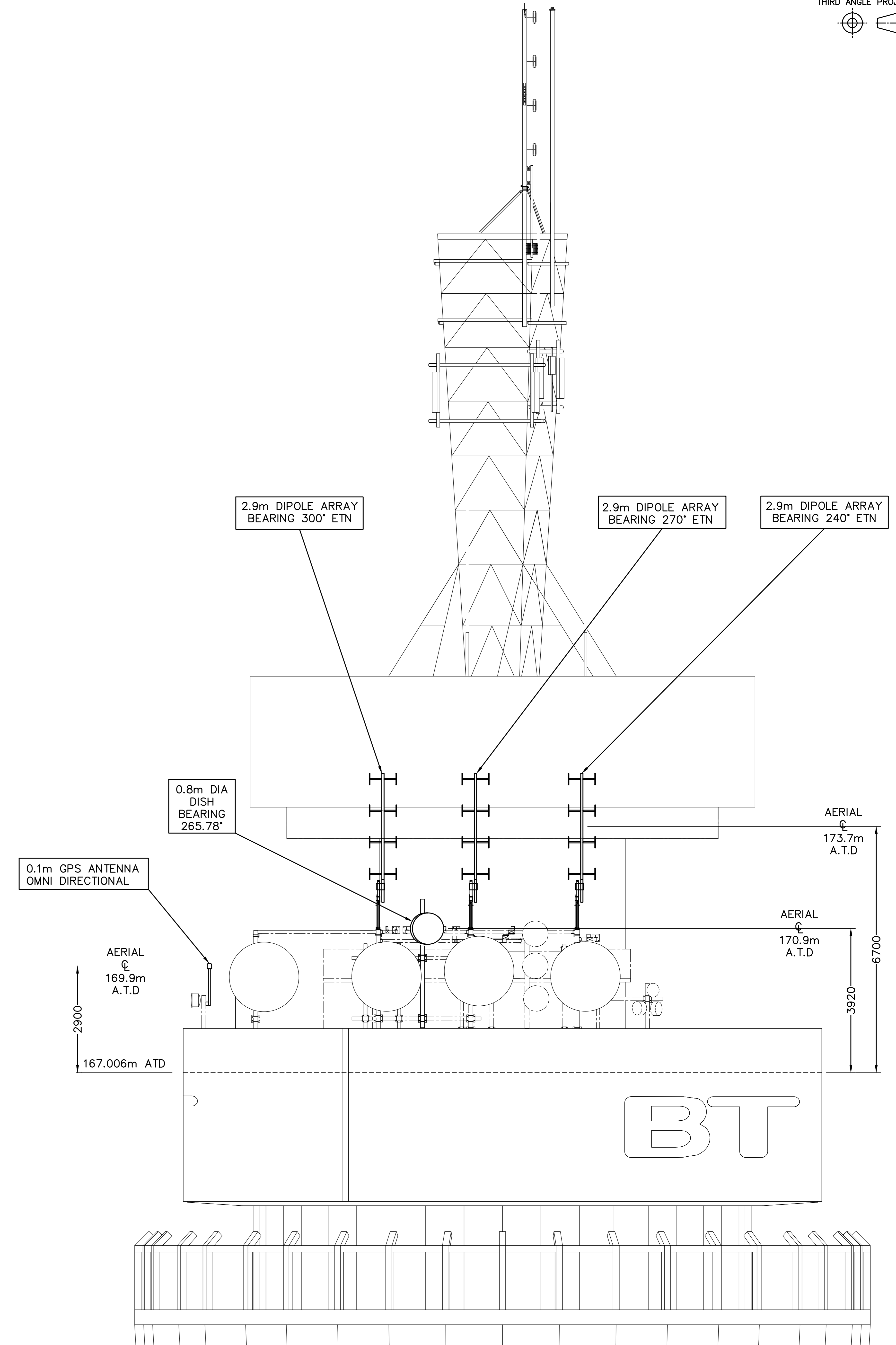


ELEVATION VIEW OF TOWER FACING WEST
SCALE 1:300



ENLARGED PART ELEVATION VIEW OF TOWER FACING WEST AT 167.006m ATD
SHOWING EXISTING AERIALS
SCALE 1:50



ENLARGED PART ELEVATION VIEW OF TOWER FACING WEST AT 167.006m ATD
SHOWING PROPOSED AERIAL
SCALE 1:50

DIMENSIONS IN mm UNLESS OTHERWISE STATED © British Telecommunications plc 2015 DO NOT SCALE ORIGINAL SCALE AS SHOWN

DRN S.A.D	ANY MODIFICATION TO THE DRAWING OR THE USE OF ALTERNATIVE ITEMS TO THOSE SPECIFIED MUST BE AGREED WITH THE DESIGNER.
CKD	
CERTIFICATION DESIGNER	
CLIENT A.MILLER	
DATE 27 09 2016	

MATERIAL	GPS AERIAL MOVED FROM WEST FACE TO NORTH.	D	LONDON TELECOM TOWER PLANNING PROPOSAL FOR 0.8mm DISH, 0.1m GPS AERIAL, 3x 2.9m DIPOLE ARRAY AERIALS ON WEST FACE AT 167M LEVEL	REFERENCES
FINISH				
S.A.D 16/11/2016		AMENDMENT	ISSUE BT TSO	UK RSDO WL 4005107 SHT 03 OF 03