

# The Hall

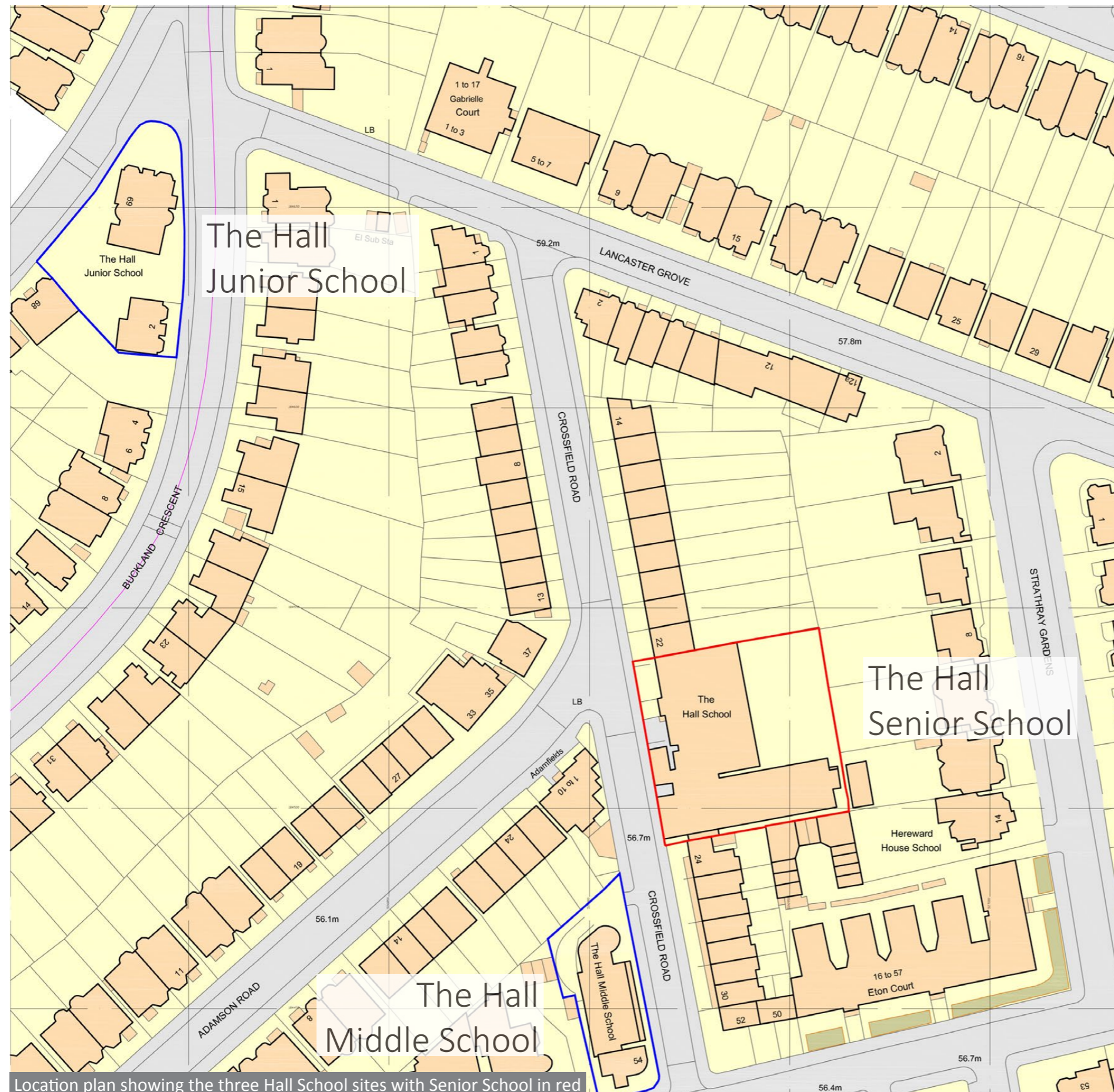




## PART 2 SITE ANALYSIS



# LOCATION ANALYSIS



## The School Sites

The design proposals relate solely to the Senior School on the east side of Crossfield Road.

There are up to 460 pupils spread across the three sites. This is the limit as set by the Department for Education and this will not be affected by this application.

The Hall School is located in Hampstead near Swiss Cottage tube station. It has three sites all within a few hundred metres of each other in the Belsize Park Conservation Area:

**Junior School** – Two adjacent former residential buildings on Buckland Crescent. Hosts Reception, & Years 1, 2 & 3. Some of the administration offices are located here.

**Middle School** – Late 1990's purpose built educational facility opposite the Senior School on Crossfield Road. Hosts Years 4 & 5. The dining facilities for Years 1 to 8 are located here.

**Senior School** – Original Victorian School building with later extensions. Hosts Years 6, 7 & 8.

Educational facilities such as the Wilf Slack playing fields in the London Borough of Barnet are shared. These are located in Finchley and are 15 minutes from the school. The facility has recently been upgraded with the refurbishment of the pavilion and improvement of the pitches.

The School has several partnership institutions – Richard Cobden Primary School, Brookfield Primary and The Winch in Camden, Our Lady of Muswell Hill in Haringey and St. Saviour's Church of England Primary School in Westminster.





Aerial photograph showing the Senior School site outlined in red



# SITE PLAN



Site plan showing the existing buildings and site photograph locations



# SITE PHOTOGRAPHS



1 - View of Senior School building from Crossfield Road looking South



2 - View of Senior School building from the end of Adamson Road



3 - View of the Senior School building from outside the Middle School



4 - View of Senior School from the playground



# HISTORY

Recognising the importance of heritage and conservation matters, the Hall School has engaged the services of Montagu Evans to advise on the design of the proposals. Montagu Evans have prepared a Heritage Appraisal which accompanies this application.



Historical photograph of the original school building from the playground, dated 1894



Historical photograph of the original school building from Crossfield Road, dated 1894

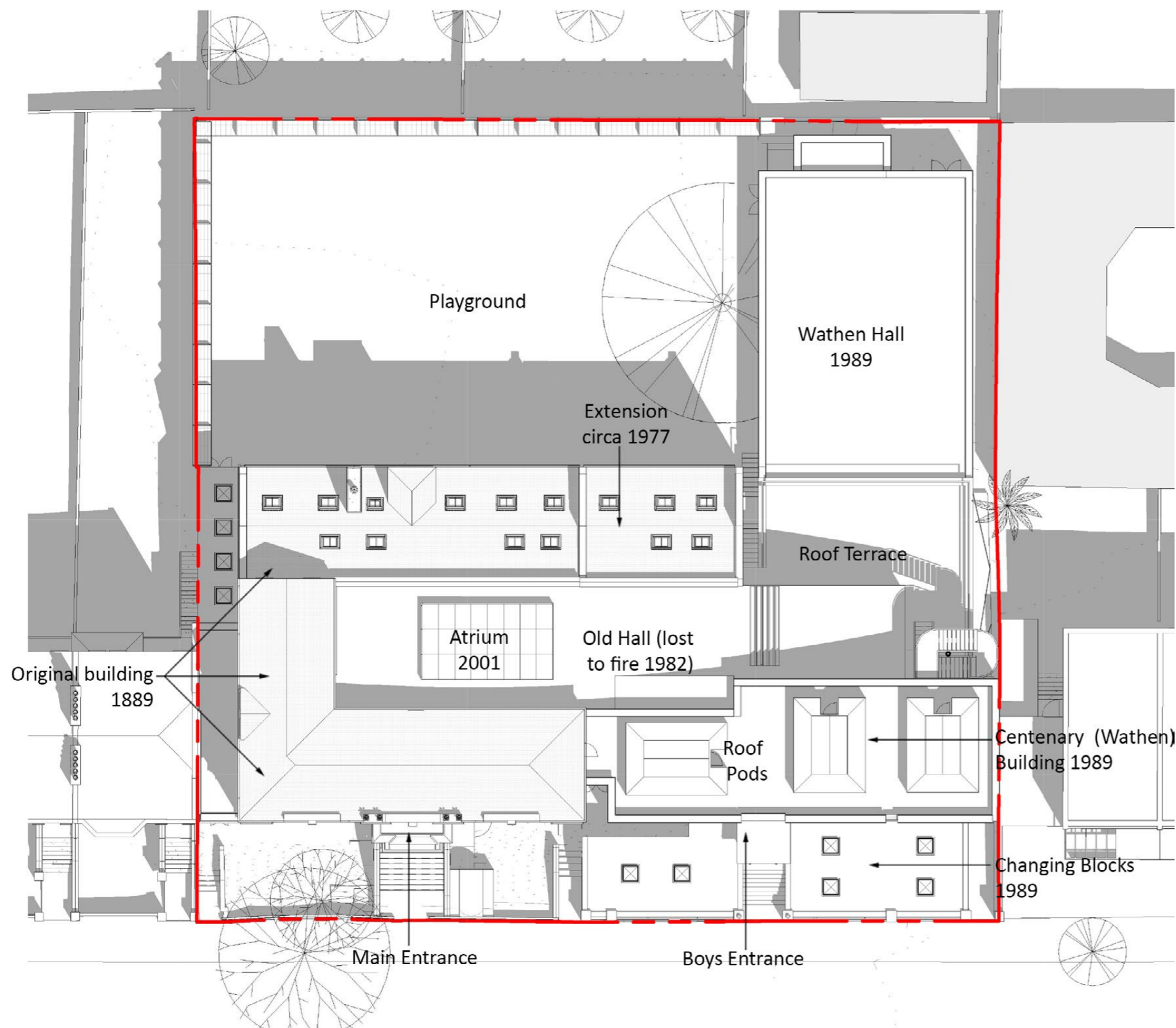
## THE HALL SCHOOL

The Hall School is an independent day school for boys aged 4 to 13. Established in 1889, it is one of the leading independent schools in London and is committed to excellence in education. The School is the driving force behind the proposals presented today and has appointed a team of experts to ensure excellence across all aspects of the development.

The Hall School has been based in Camden for the entirety of its existence. The School is clear that the long term future of the School is at the current site on Crossfield Road.

A long and proud history in the local area demonstrates that this will remain the right location for the School for years to come.





Building Plan labelling different stages of development

## BUILDING DEVELOPMENT HISTORY

The school can trace its history back to 1889 when it was set up as the Belsize School for Boys. In 1905 the school outgrew its building and so a swap was undertaken with a girl's school at The Hall. This building, now the Senior School, has been added to in a piecemeal fashion over time and this has led to a sub-optimal layout. The stages of development are summarised as follows:

### 1889

Original school building on northern half of the site. This part of the building is noted in the Belsize Park conservation area document as being of notable quality.

### 1977

The rear gable was extended adding a staircase and further classrooms. Architecturally this is a diminished version of the original but being at the rear of the site its impact is limited.

### 1982

The original main hall was lost to fire in an arson attack. Old photographs and drawings show how this space was of great quality and the heart of the school.

### 1986

The fire damaged hall space was filled in with flat roofed accommodation which was later covered by the current atrium.

### 1989

The Centenary Building or Wathen Building on the southern half of the site was added, this included the Wathen Hall. Specifically noted in the conservation area as not having the same design/ heritage merit as the original building, this extension was done on a tight budget with poor finishing materials within and without.

### 2001

The in-fill of the old hall was partially cleared to make way for new circulation and additional classrooms. Though the architecture is of finer quality than earlier additions it is slightly alien to the context and presents a missed opportunity as some of the key issues regarding daylight, ventilation and circulation have been compounded by cramming in more classrooms.