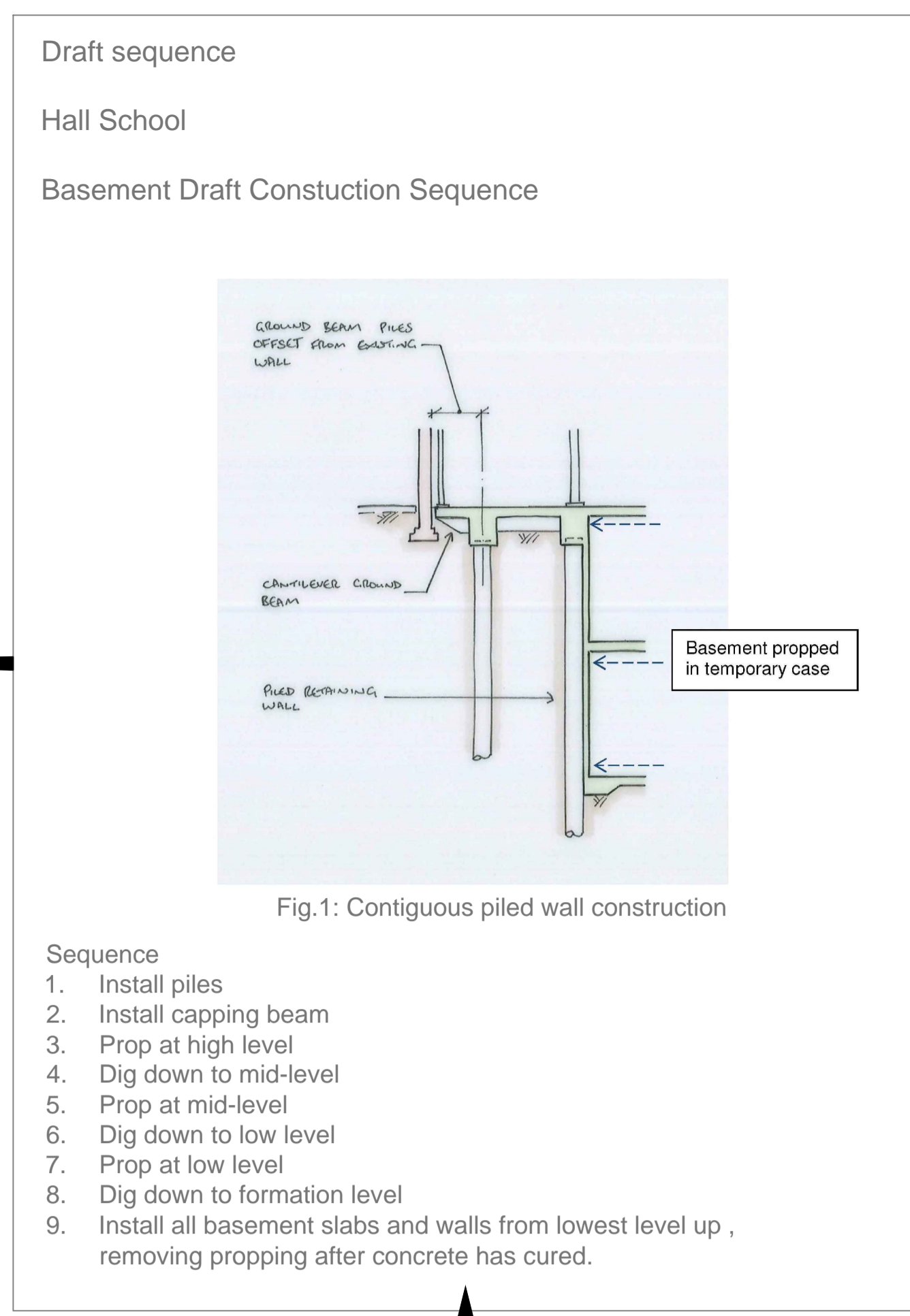
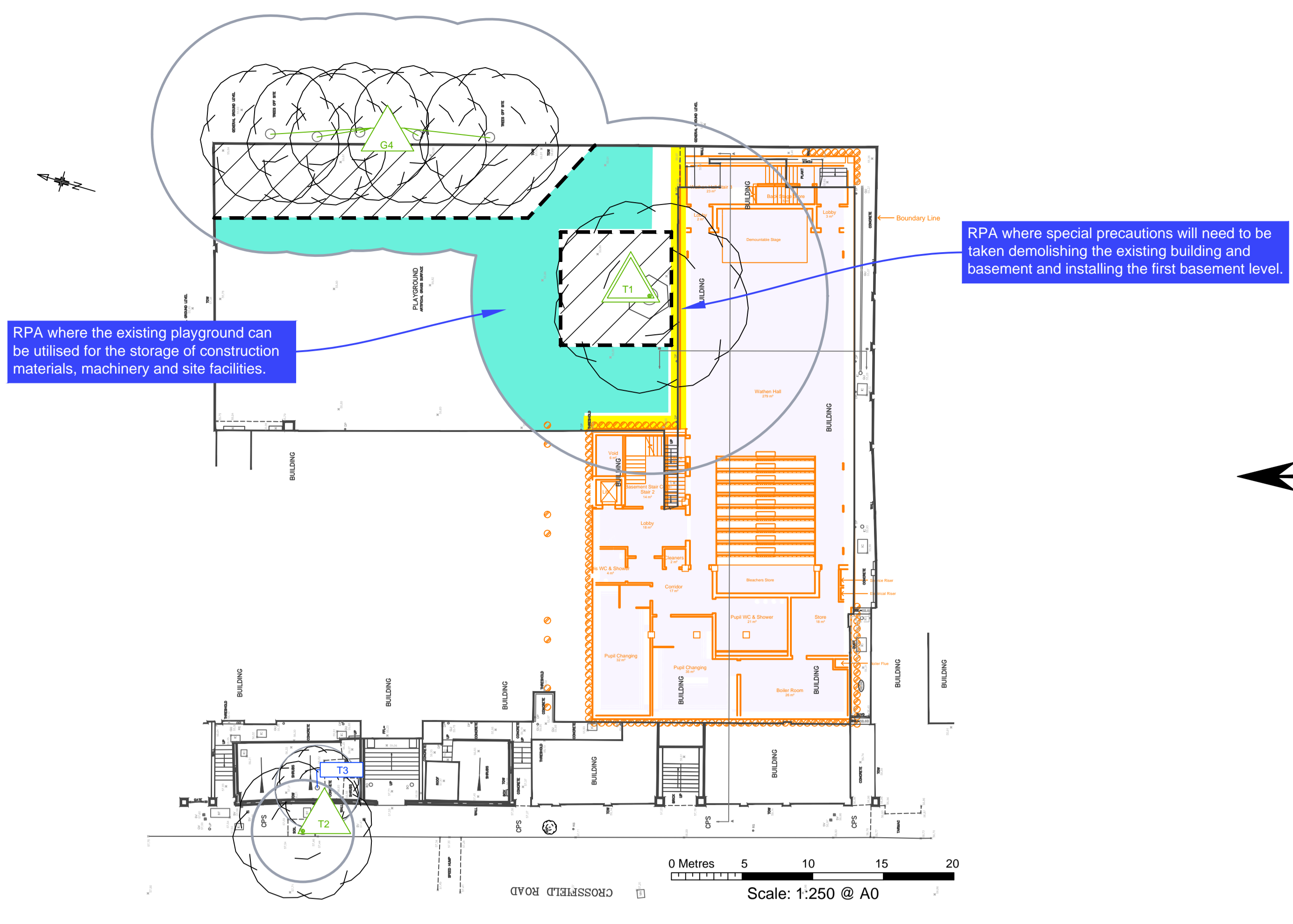


Basement 2



Tree protection plan
Location of trees, categorisation & protection/management proposals at The Hall School, Crossfield Road, London

Permission is granted to scale from this drawing for Local Authority Planning Approval purposes relating to tree protection measures only. Where applicable this drawing is to be read in conjunction with the arboricultural report. This drawing is the copyright of Barrell Tree Consultancy 2016. ©

This drawing is to be reproduced in colour only.

Barrell Plan Ref: 15204-BT1

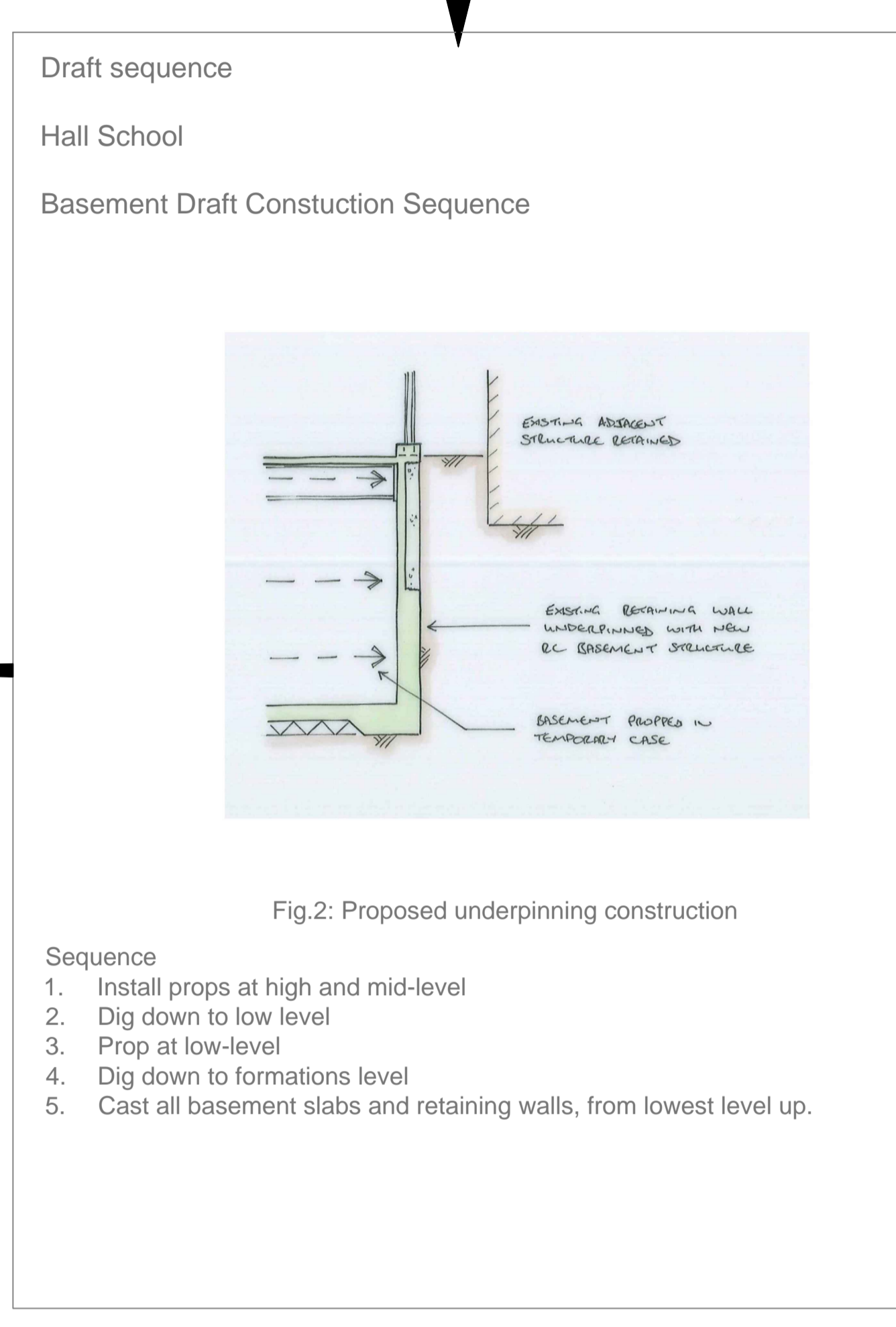
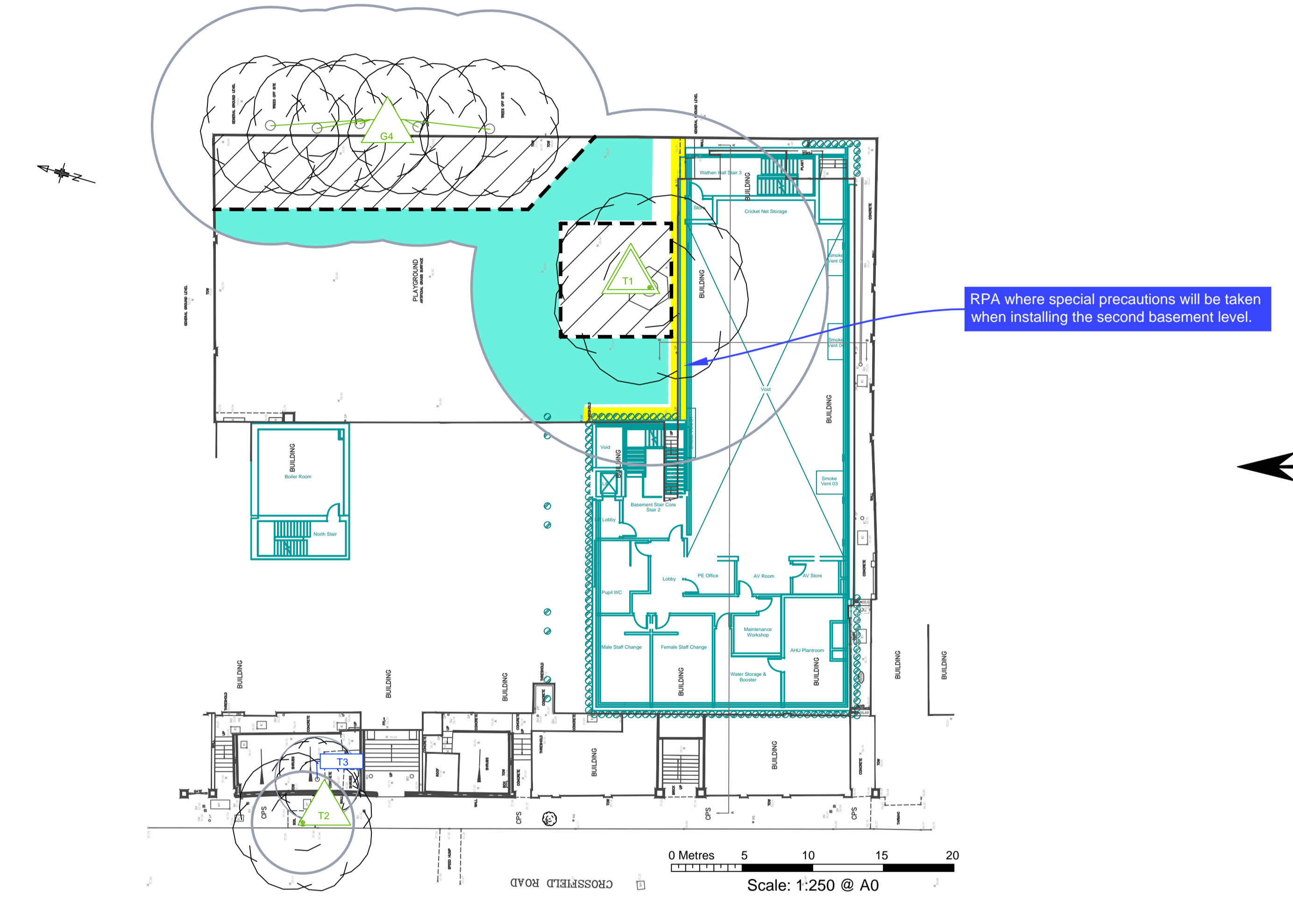
Provided Plan Refs:
16077B/TOPO/OS, X20-B1-02 Rev B, X20-B2-02 Rev B, X20-LG-02 Rev B, X20-UG-02 Rev A, IALN14-0046-Hall School-Front Gardens Layout Plan.dwg & IALN14-0046-Hall School-New Cycle Shelter Section.dwg

barrell
TREE CONSULTANCY

Field House, Fordingbridge Business Park, Address Road, Fordingbridge SP11 1BT, Tel: 01425 631470 Fax: 01425 633449 www.barrelltree.com

- BS category A Trees of high quality
- BS category B Trees of moderate quality
- BS category C Trees of low quality
- Proposed Basement 2
- Proposed Basement 1
- Proposed Lower ground
- Proposed Ground floor and cycle store
- Proposed Upper ground floor
- Construction exclusion zone (CEZ) to be protected by fencing
- Precautionary Areas
- RPA where the existing playground can be utilised for the storage of construction materials, machinery and site facilities
- Root protection area (RPA) boundaries for category A and B trees
- Root protection area (RPA) boundary for category C tree

Basement 1



Tree schedule

| Tree No | Species | Category | RPA Radius | Tree Works |
|-----------------------|---|----------|------------|---|
| Retained trees | | | | |
| T1 | London plane | A | 12.6 | Carry out safety check and lift over site to 3-4m as necessary. |
| T2 | Maple sp | B | 3.6 | - |
| T3 | Purple plum | C | 3 | - |
| G4 | Sycamore, poplar, London plane, cypress | B | 8.4 | - |

Illustrative Site Guidance for Tree Protection Barriers

Illustrative specification for barriers near trees according to BS 5837 (2012) recommendations. Note: The final design must be site specific and detailed by an appropriately qualified expert.

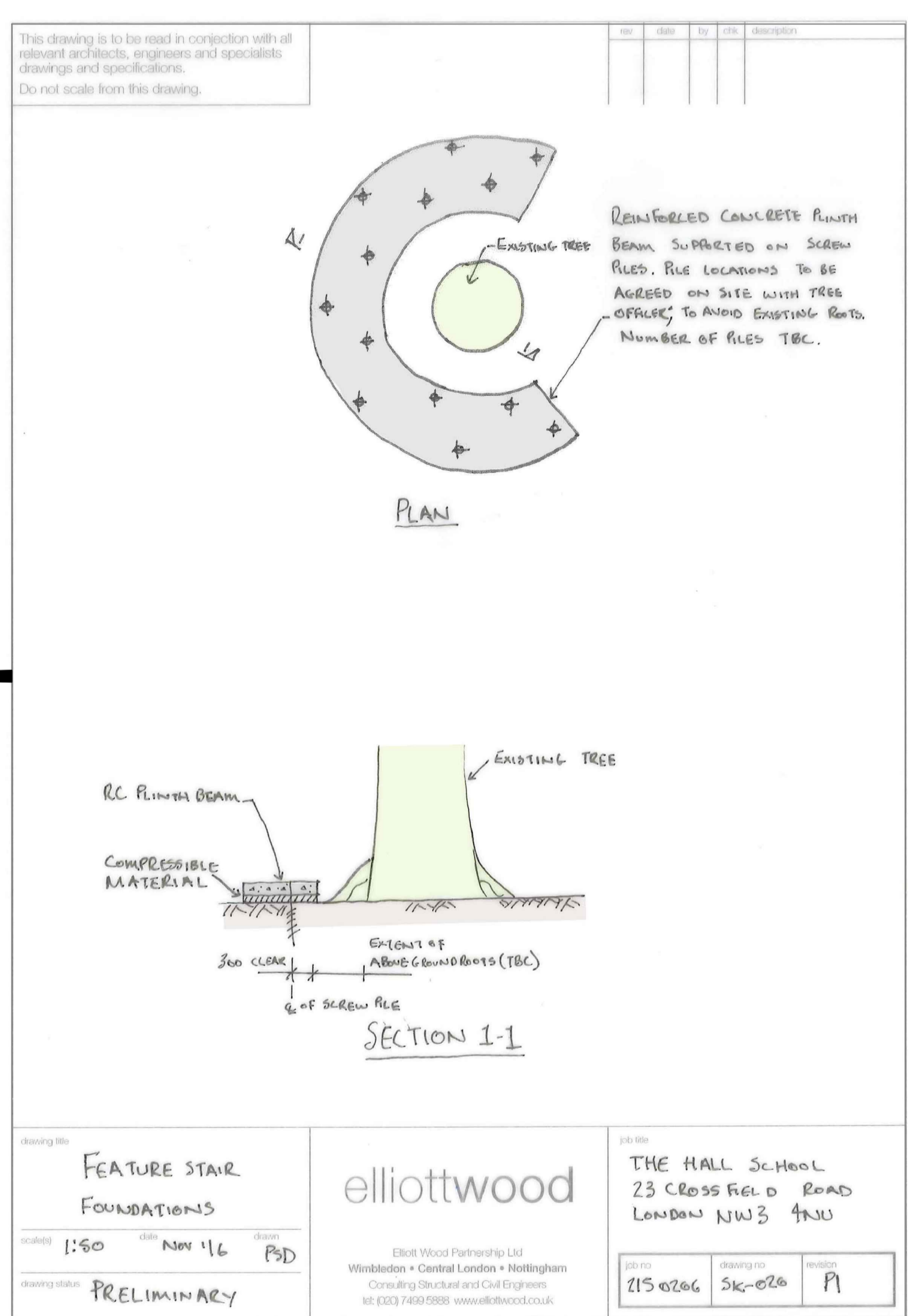
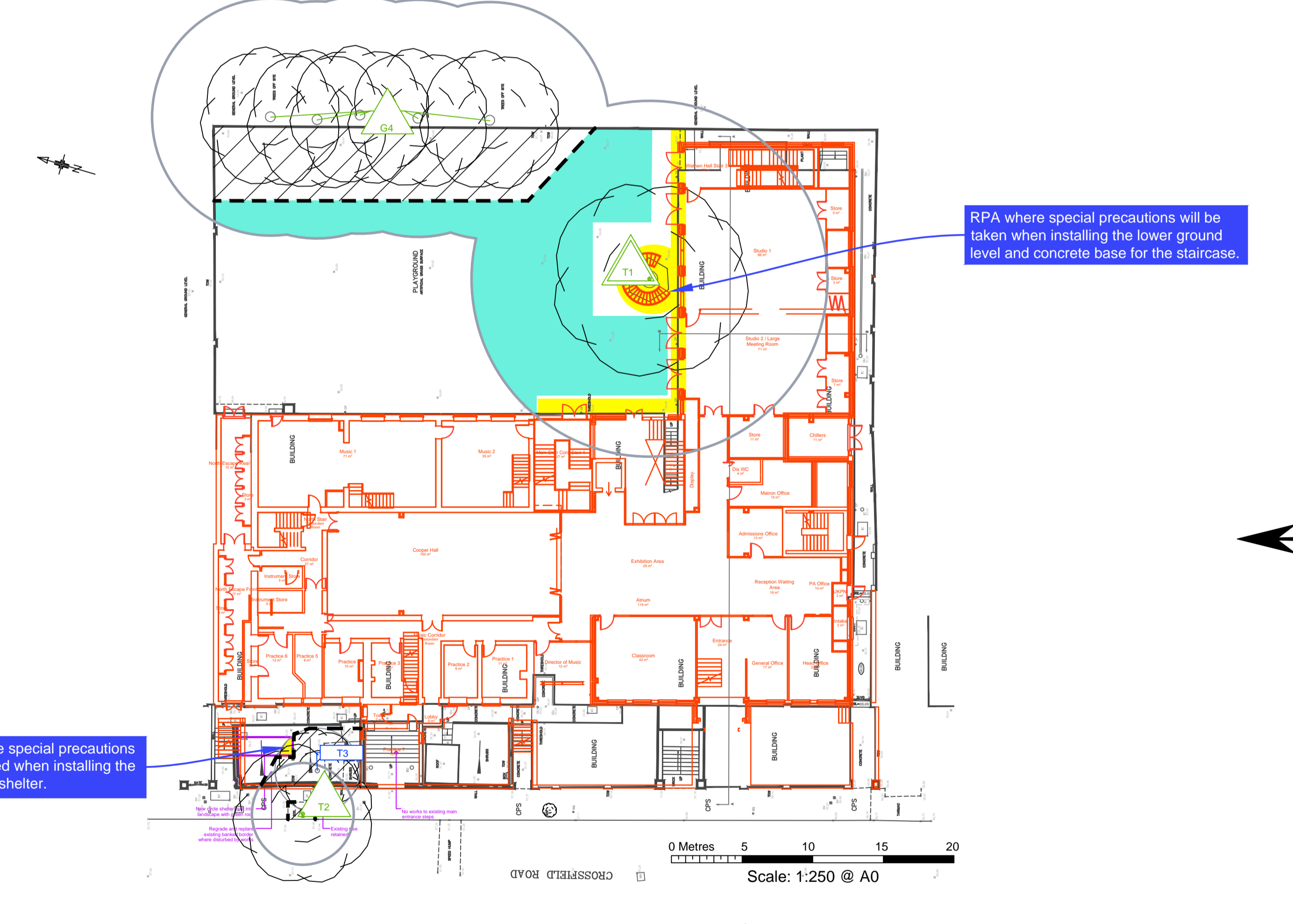
Helix fencing wired to scaffold braced posts

Board specification on secure wooden posts

Explanatory notes

1. Barriers should be installed at the location illustrated on the Barrell Tree Consultancy plan and agreed as acceptable in writing by the LPA before any site works start that could affect protected trees.
2. All uprights should be fixed in position for the duration of the development activity as either scaffold tubes or wooden posts banded or dug into the ground and braced sufficiently to withstand the pressures of everyday site work.
3. The framework supported by the uprights must be suitable for firmly attaching either heras panels or heavy duty ply in a way that will not allow the facing to be easily moved.
4. Minimum barrier height is 2.3m unless otherwise agreed with the LPA.
5. Inside the protective barrier, the following rules must be strictly observed:
 - No vehicular access
 - No fires
 - No storage of excavated debris, building materials or fuels
 - No mixing of cement
 - No service installation or excavation without written consent of the LPA
 - No excessive cultivation for landscape planting
6. No barriers should be removed or temporarily dismantled without the written permission of the LPA.
7. Barrier condition to be regularly monitored to ensure it remains effective.

Lower Ground Floor



Illustrative suggestion for barriers around individual trees. Note: The final design must be site specific and detailed by an appropriately qualified expert.

Scaffold braced posts surrounding trunk

Board secured to scaffold framework

Explanatory notes

1. Barriers should be installed at the location illustrated on the Barrell Tree Consultancy plan and agreed as acceptable in writing by the LPA before any site works start that could affect protected trees.
2. All uprights should be fixed in position for the duration of the development activity as either scaffold tubes or wooden posts banded or dug into the ground and braced sufficiently to withstand the pressures of everyday site work.
3. The framework supported by the uprights must be suitable for firmly attaching either heras panels or heavy duty ply in a way that will not allow the facing to be easily moved.
4. Minimum barrier height is 2.3m unless otherwise agreed with the LPA.
5. Inside the protective fencing, the following rules must be strictly observed:
 - No vehicular access
 - No fires
 - No storage of excavated debris, building materials or fuels
 - No mixing of cement
 - No service installation or excavation without written consent from the LPA
 - No excessive cultivation for landscape planting
6. No barriers should be removed or temporarily dismantled without the written permission of the LPA.
7. Barrier condition to be regularly monitored to ensure it remains effective.

Ground Floor and Upper Ground Floor

