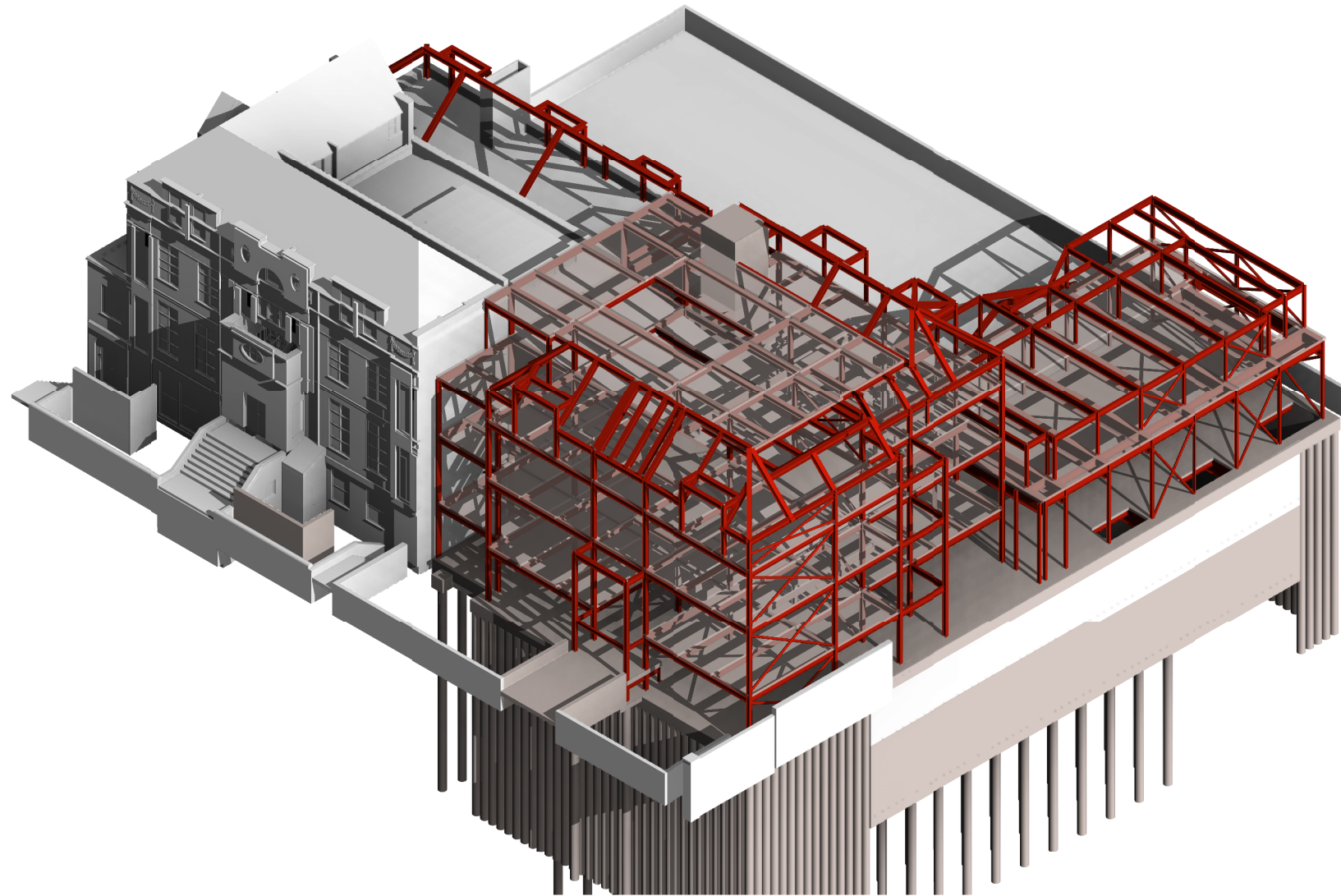
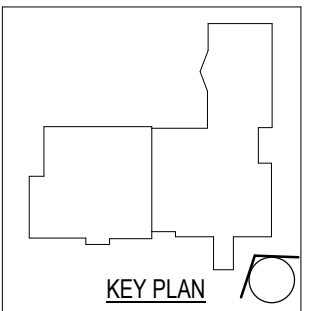


This drawing is to be read in conjunction with all relevant architects, engineers and specialists drawings and specifications.

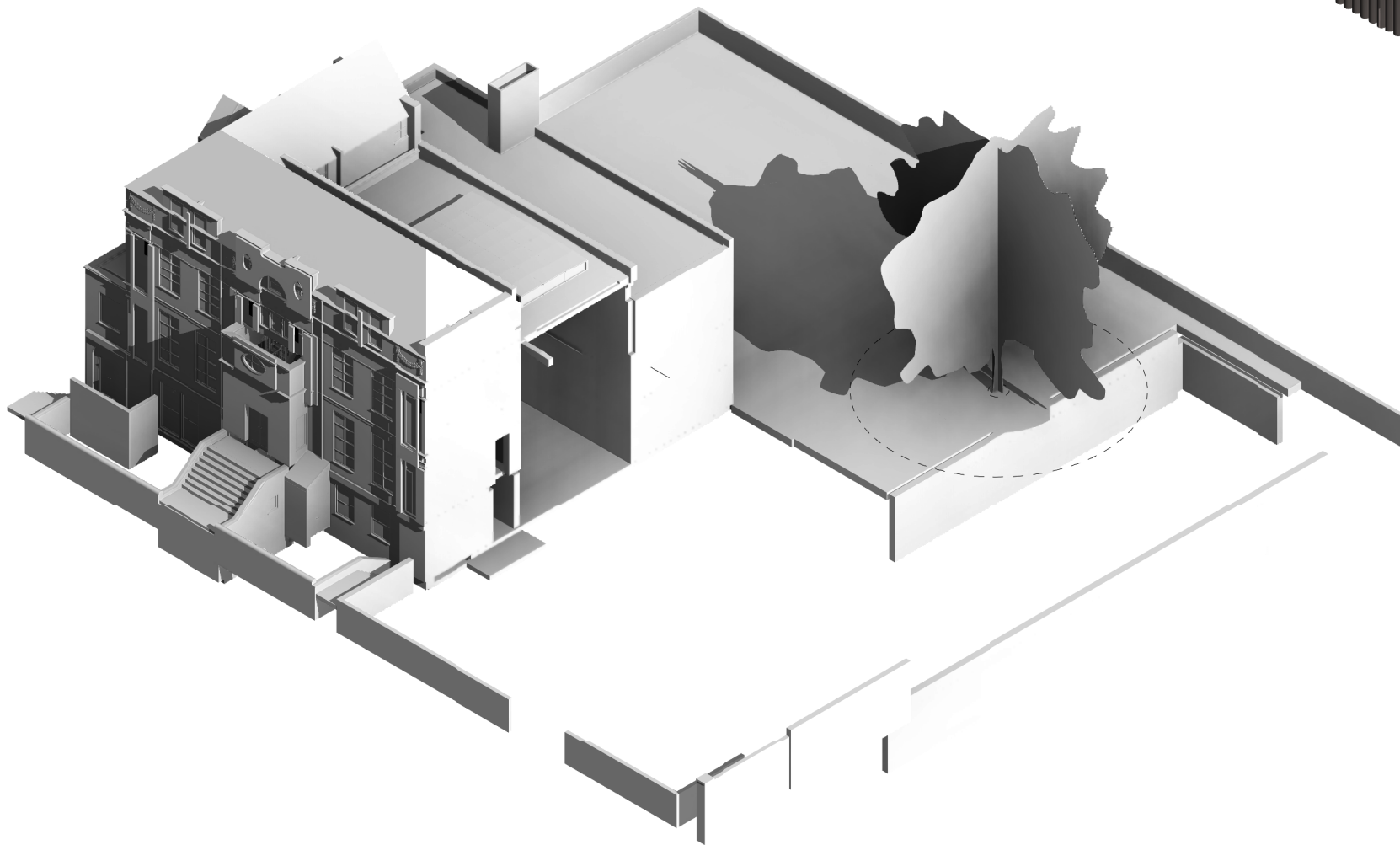
Do not scale from this drawing.

**ISOMETRIC VIEW:**

- EXISTING STRUCTURE
- EXISTING STRUCTURE TO BE REMOVED
- NEW REINFORCED CONCRETE
- NEW MASS CONCRETE
- NEW STRUCTURAL STEELWORK
- NEW LOAD BEARING BLOCKWORK
- NEW LOAD BEARING BRICKWORK
- NEW TIMBER
- NEW GLAZING



**EXISTING & PROPOSED**



**EXISTING RETAINED**

**NOT FOR CONSTRUCTION**

P2	16.11.16	DP:	PSD	Issued for Planning
P1	04.11.16	DP:	PSD	Issued for Planning
rev	date	by	chk	description

**elliottwood**

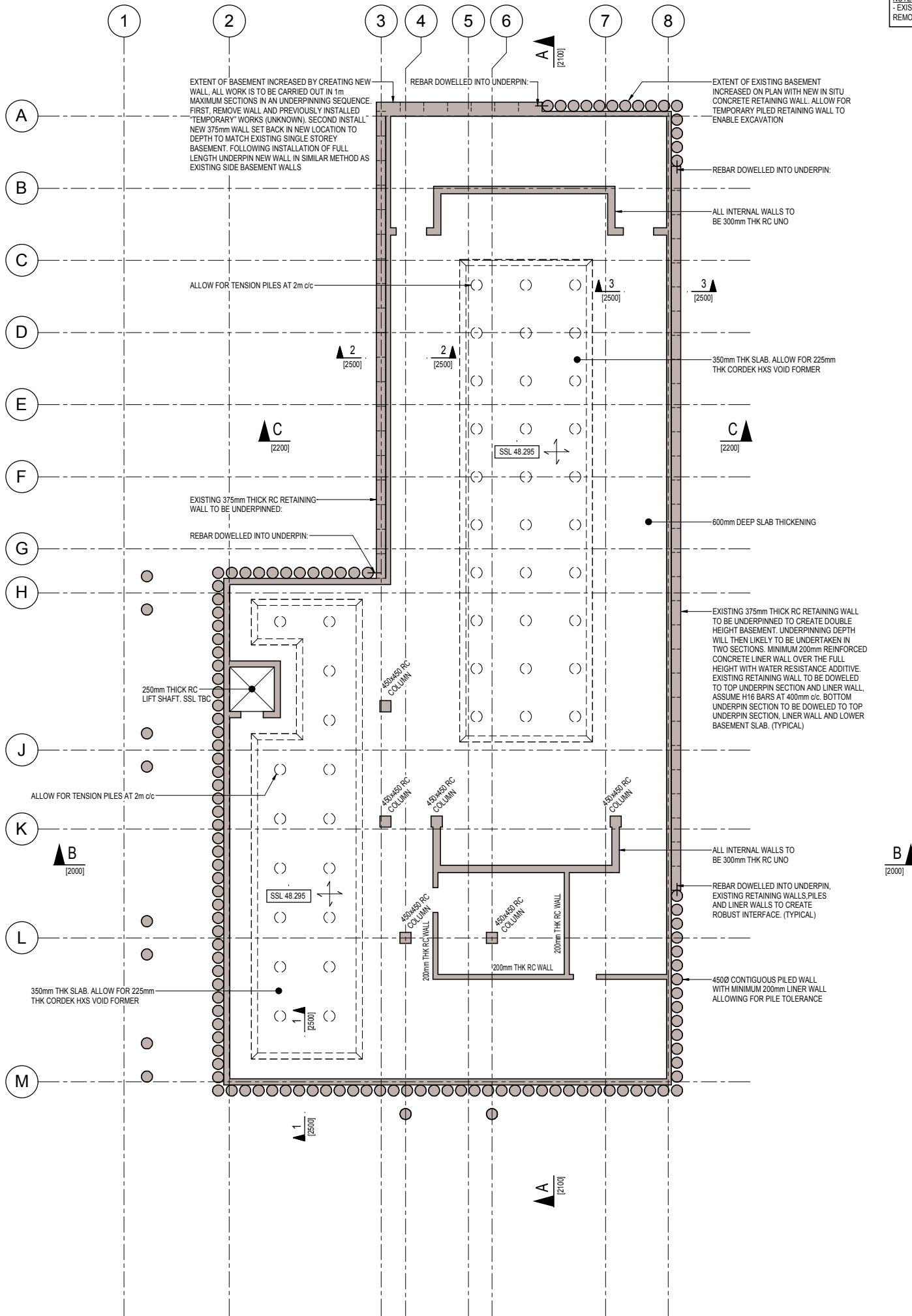
Elliott Wood Partnership Ltd  
Wimbledon • Central London • Nottingham  
Consulting Structural and Civil Engineers  
tel: (020) 7499 5888. www.elliottwood.co.uk

project  
The Hall School,  
23 Crossfield Road,  
Hampstead,  
London NW3 4NU

drawing title  
Sequencing Drawings Sheet 2  
Existing & Retained + Existing &  
Proposed

scale (s) N.T.S.      date August 2016      drawn DP:

<small>project no.</small> 2150206		<small>drawing status</small> Preliminary			
<small>originator</small> EW	<small>zone</small> 00	<small>level</small> VIS	<small>role</small> S	<small>drg no.</small> 0006	<small>revision</small> P2



NOTES:  
 - EXISTING STRUCTURE TO BE REMOVED NOT SHOWN FOR CLARITY

This drawing is to be read in conjunction with all relevant architects, engineers and specialists drawings and specifications.  
 Do not scale from this drawing.

**LEGEND**

	EXISTING STRUCTURE
	NEW LOAD BEARING BLOCKWORK
	NEW LOAD BEARING BRICKWORK
	NEW REINFORCED CONCRETE
	NEW MASS CONCRETE
	PADSTONES
	LOAD BEARING STUDWORK
	NON LOAD BEARING WALLS
	LOAD BEARING STRUCTURE BELOW
	EXISTING STRUCTURE TO BE REMOVED
	NEW STEEL BEAMS
	NEW LINTELS OVER OPENINGS

NOTES:  
 ALLOW FOR WATERPROOF CONCRETE TO LINER WALLS AND SLAB

**NOT FOR CONSTRUCTION**

P3	16.11.16	DP+	PSD	Issued for Planning
P2	04.11.16	DP+	PSD	Issued for Planning
P1	19.08.16	DP+	PSD	Issued for Information & Comment
rev	date	by	chk	description

**elliottwood**  
 Elliott Wood Partnership Ltd  
 Wimbledon • Central London • Nottingham  
 Consulting Structural and Civil Engineers  
 tel: (020) 7499 5888. www.elliottwood.co.uk

project  
 The Hall School,  
 23 Crossfield Road,  
 Hampstead,  
 London NW3 4NU  
 drawing title  
 Proposed Basement 2

scale (s) 1:100@A1:1:200@A3 date August 2016 drawn DP+

project no. 2150206		drawing status Preliminary			
originator EW	zone 00	level B02	role S	dra no. 0700	revision P3



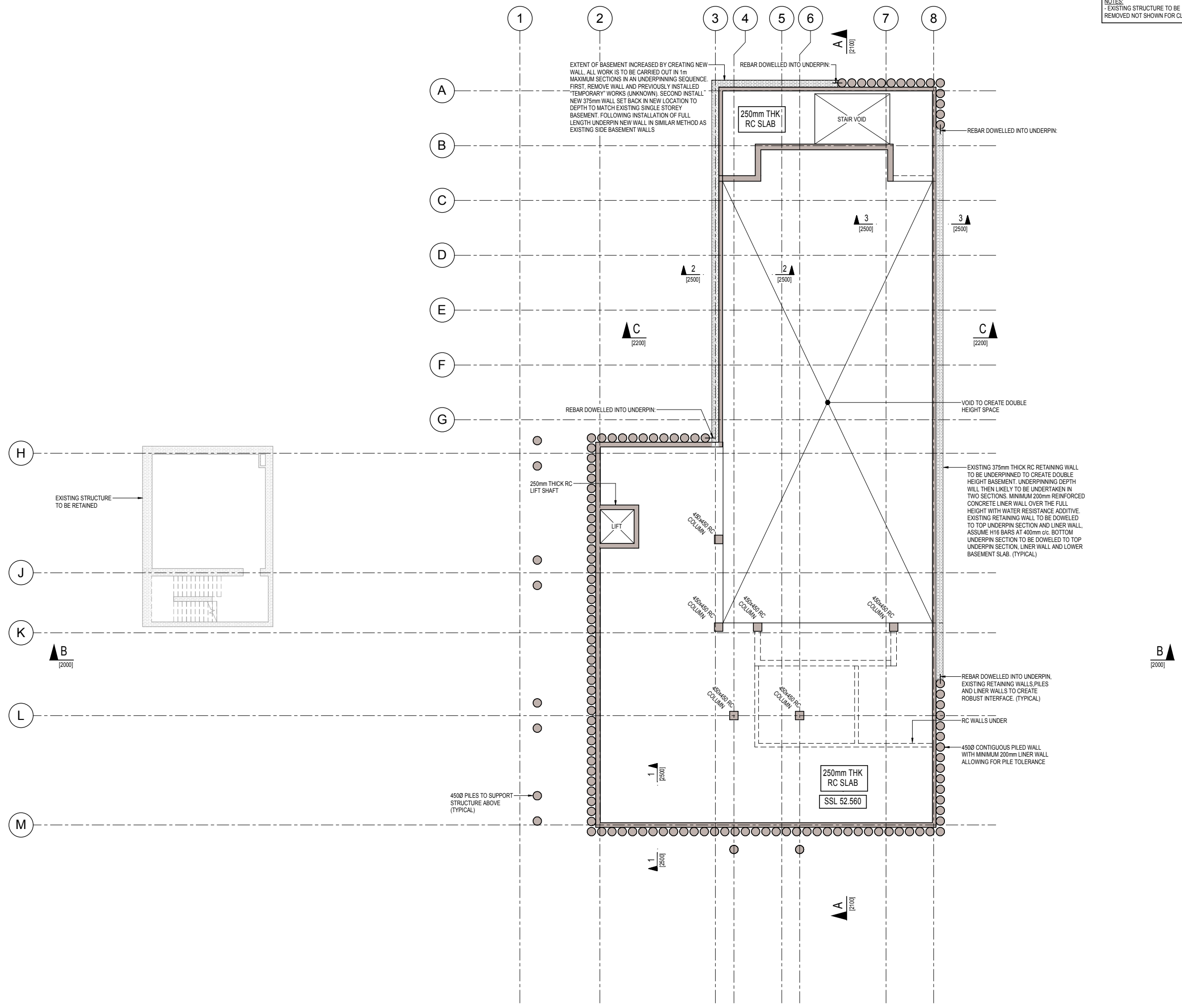
NOTES:  
- EXISTING STRUCTURE TO BE REMOVED NOT SHOWN FOR CLARITY

This drawing is to be read in conjunction with all relevant architects, engineers and specialists drawings and specifications.  
Do not scale from this drawing.

**LEGEND**

- EXISTING STRUCTURE
- NEW LOAD BEARING BLOCKWORK
- NEW LOAD BEARING BRICKWORK
- NEW REINFORCED CONCRETE
- NEW MASS CONCRETE
- PADSTONES
- LOAD BEARING STUDWORK
- NON LOAD BEARING WALLS
- LOAD BEARING STRUCTURE BELOW
- EXISTING STRUCTURE TO BE REMOVED
- NEW STEEL BEAMS
- NEW LINTELS OVER OPENINGS

NOTES:  
ALLOW FOR WATERPROOF CONCRETE TO LINER WALLS AND SLAB



**NOT FOR CONSTRUCTION**

P3	16.11.16	DP+	PSD	Issued for Planning
P2	04.11.16	DP+	PSD	Issued for Planning
P1	19.08.16	DP+	PSD	Issued for Information & Comment
rev	date	by	chk	description

**elliottwood**  
Elliott Wood Partnership Ltd  
Wimbledon • Central London • Nottingham  
Consulting Structural and Civil Engineers  
tel: (020) 7499 5888. www.elliottwood.co.uk

project  
The Hall School,  
23 Crossfield Road,  
Hampstead,  
London NW3 4NU  
drawing title  
Proposed Basement 1

scale (s) 1:000@A1; 1:000@A3 date August 2016 drawn DP+

project no. 2150206		drawing status Preliminary			
originator	zone	level	role	drg no.	revision
EW	00	B01	S	0800	P3



NOTES:  
- EXISTING STRUCTURE TO BE REMOVED NOT SHOWN FOR CLARITY

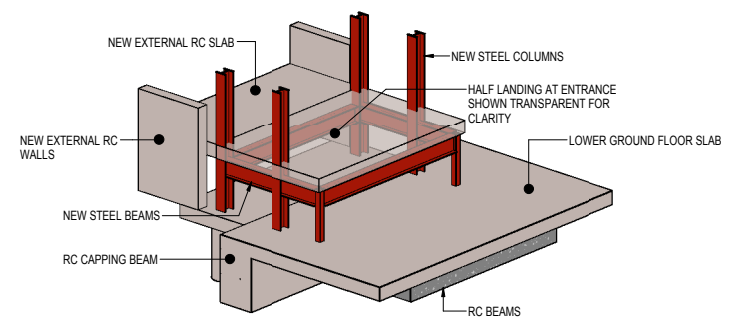
This drawing is to be read in conjunction with all relevant architects, engineers and specialists drawings and specifications.

Do not scale from this drawing.

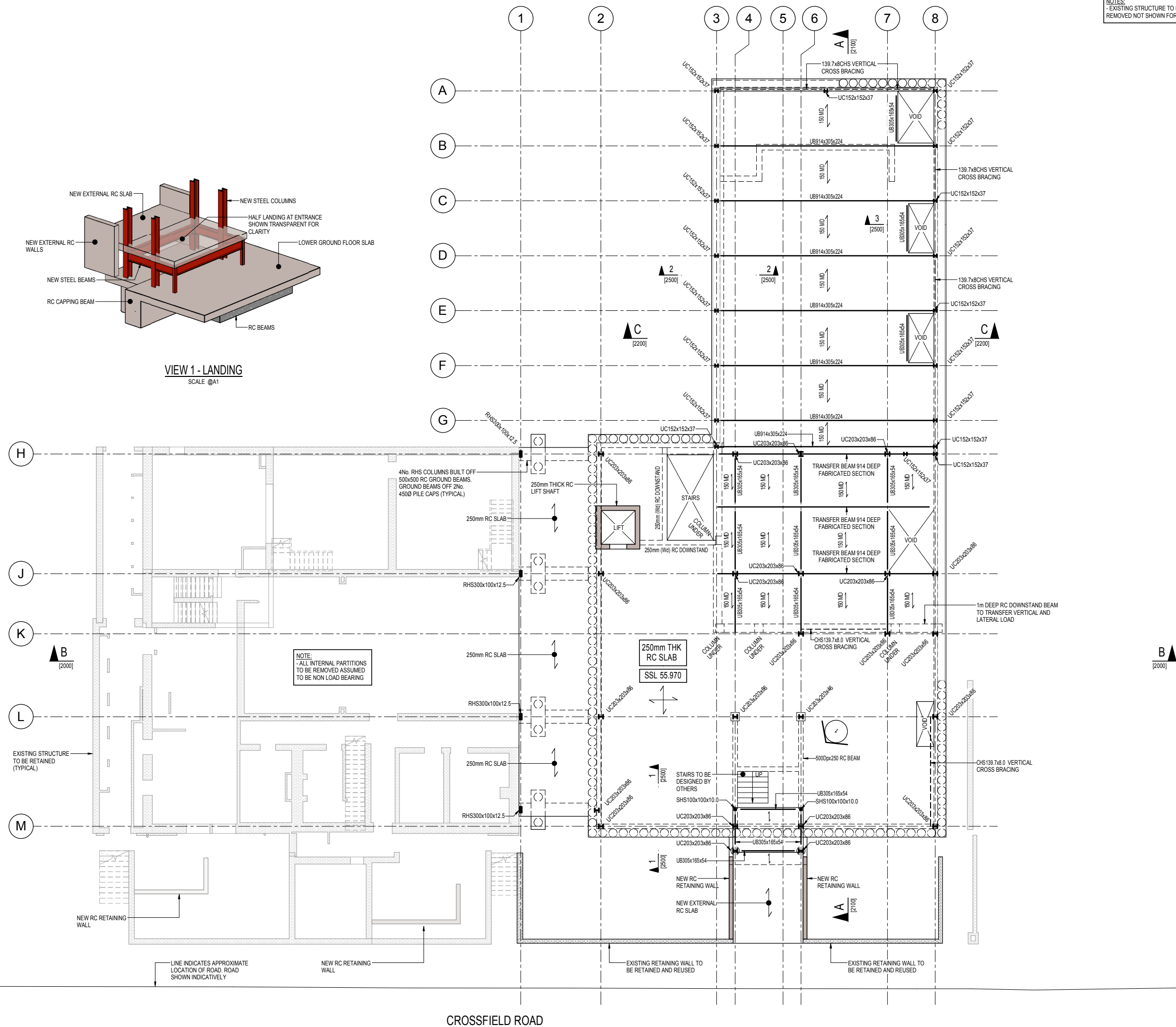
**LEGEND**

	EXISTING STRUCTURE
	NEW LOAD BEARING BLOCKWORK
	NEW LOAD BEARING BRICKWORK
	NEW REINFORCED CONCRETE
	NEW MASS CONCRETE
	PADSTONES
	LOAD BEARING STUDWORK
	NON LOAD BEARING WALLS
	LOAD BEARING STRUCTURE BELOW
	EXISTING STRUCTURE TO BE REMOVED
	NEW STEEL BEAMS
	NEW LINTELS OVER OPENINGS

NOTES:  
→ = 150mm CONCRETE SLAB ON PROFILE METAL DECKING TO ACT COMPOSITELY WITH STEEL BEAM



**VIEW 1 - LANDING**  
SCALE @A1



NOTE:  
- ALL INTERNAL PARTITIONS TO BE REMOVED ASSUMED TO BE NON LOAD BEARING

**NOT FOR CONSTRUCTION**

P3	16.11.16	DP+	PSD	Issued for Planning
P2	04.11.16	DP+	PSD	Issued for Planning
P1	19.08.16	DP+	PSD	Issued for Information & Comment
rev	date	by	chk	description

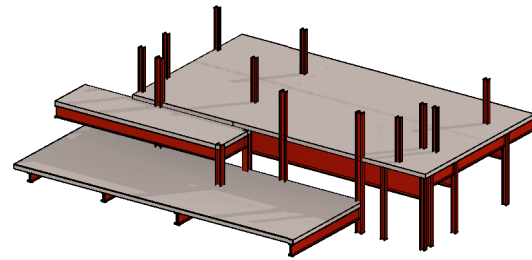
**elliottwood**  
Elliott Wood Partnership Ltd  
Wimbledon • Central London • Nottingham  
Consulting Structural and Civil Engineers  
tel: (020) 7499 5888. www.elliottwood.co.uk

project  
The Hall School,  
23 Crossfield Road,  
Hampstead,  
London NW3 4NU  
drawing title  
Proposed Lower Ground  
Floor Plan

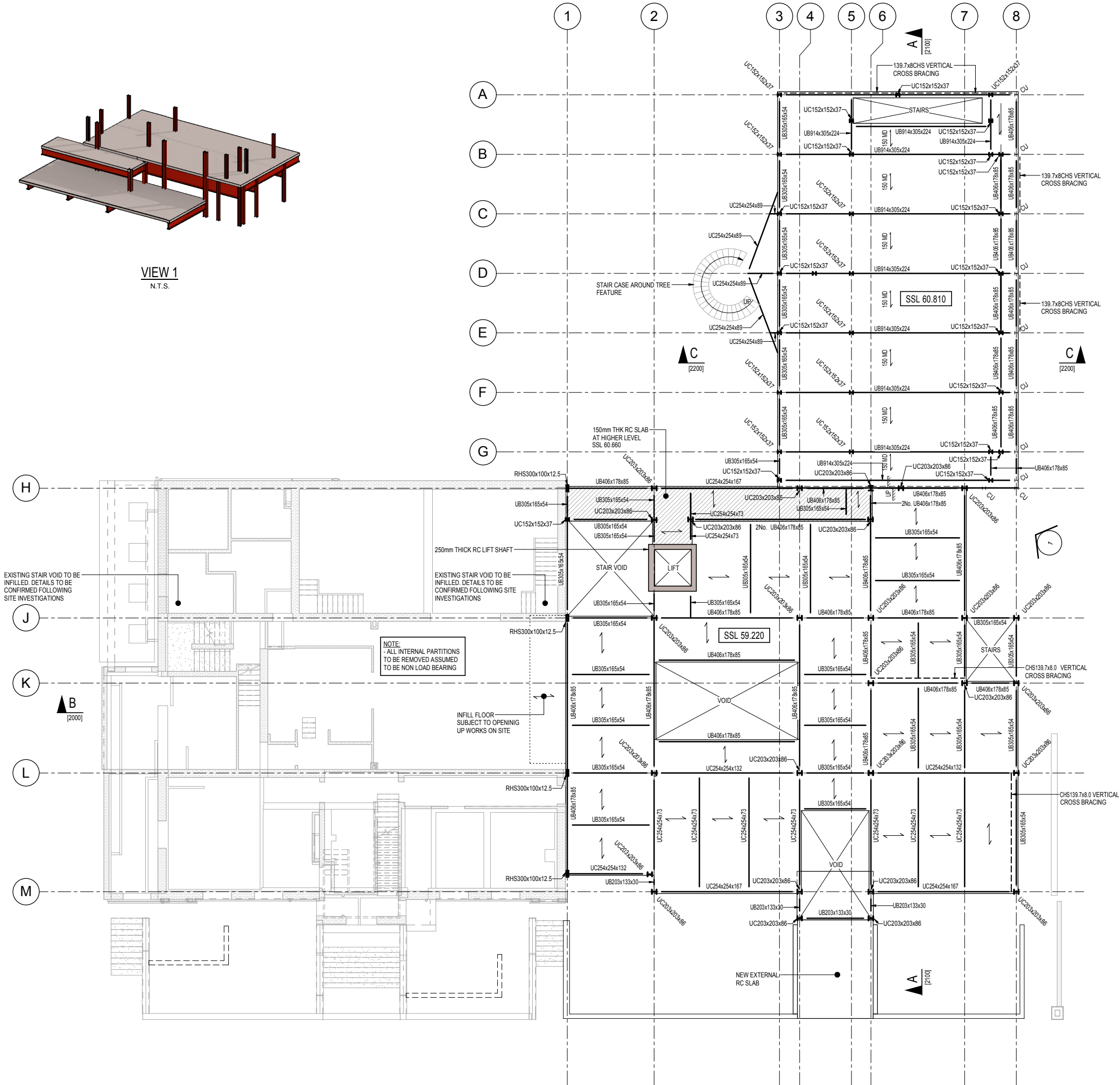
scale (s) 1:100@A1;1:200@A3 date August 2016 drawn DP+

project no.	2150206	drawing status	Preliminary
originator	EW	zone	00
level	L-1	role	S
date	0900	revision	P3

CROSSFIELD ROAD



VIEW 1  
N.T.S.



NOTES:  
- EXISTING STRUCTURE TO BE REMOVED NOT SHOWN FOR CLARITY

This drawing is to be read in conjunction with all relevant architects, engineers and specialists drawings and specifications.  
Do not scale from this drawing.

LEGEND

- EXISTING STRUCTURE
- NEW LOAD BEARING BLOCKWORK
- NEW LOAD BEARING BRICKWORK
- NEW REINFORCED CONCRETE
- NEW MASS CONCRETE
- PADSTONES
- LOAD BEARING STUDWORK
- NON LOAD BEARING WALLS
- LOAD BEARING STRUCTURE BELOW
- EXISTING STRUCTURE TO BE REMOVED
- NEW STEEL BEAMS
- NEW LINTELS OVER OPENINGS

NOTES:  
→ = 150mm CONCRETE SLAB ON PROFILE METAL DECKING TO ACT COMPOSITELY WITH STEEL BEAM

NOT FOR CONSTRUCTION

P3	16.11.16	DP	PSD	Issued for Planning
P2	04.11.16	DP	PSD	Issued for Planning
P1	19.08.16	DP	PSD	Issued for Information & Comment
rev	date	by	chk	description

**elliottwood**  
Elliott Wood Partnership Ltd  
Wimbledon • Central London • Nottingham  
Consulting Structural and Civil Engineers  
tel: (020) 7499 5888. www.elliottwood.co.uk

project  
The Hall School,  
23 Crossfield Road,  
Hampstead,  
London NW3 4NU  
drawing title  
Proposed Ground Floor Plan

scale (s) 1:000@A1; 1:000@A3 date August 2016 drawn DP

project no. 2150206		drawing status Preliminary			
originator	zone	level	role	dra. no.	revision
EW	0	L01	S	1000	P3



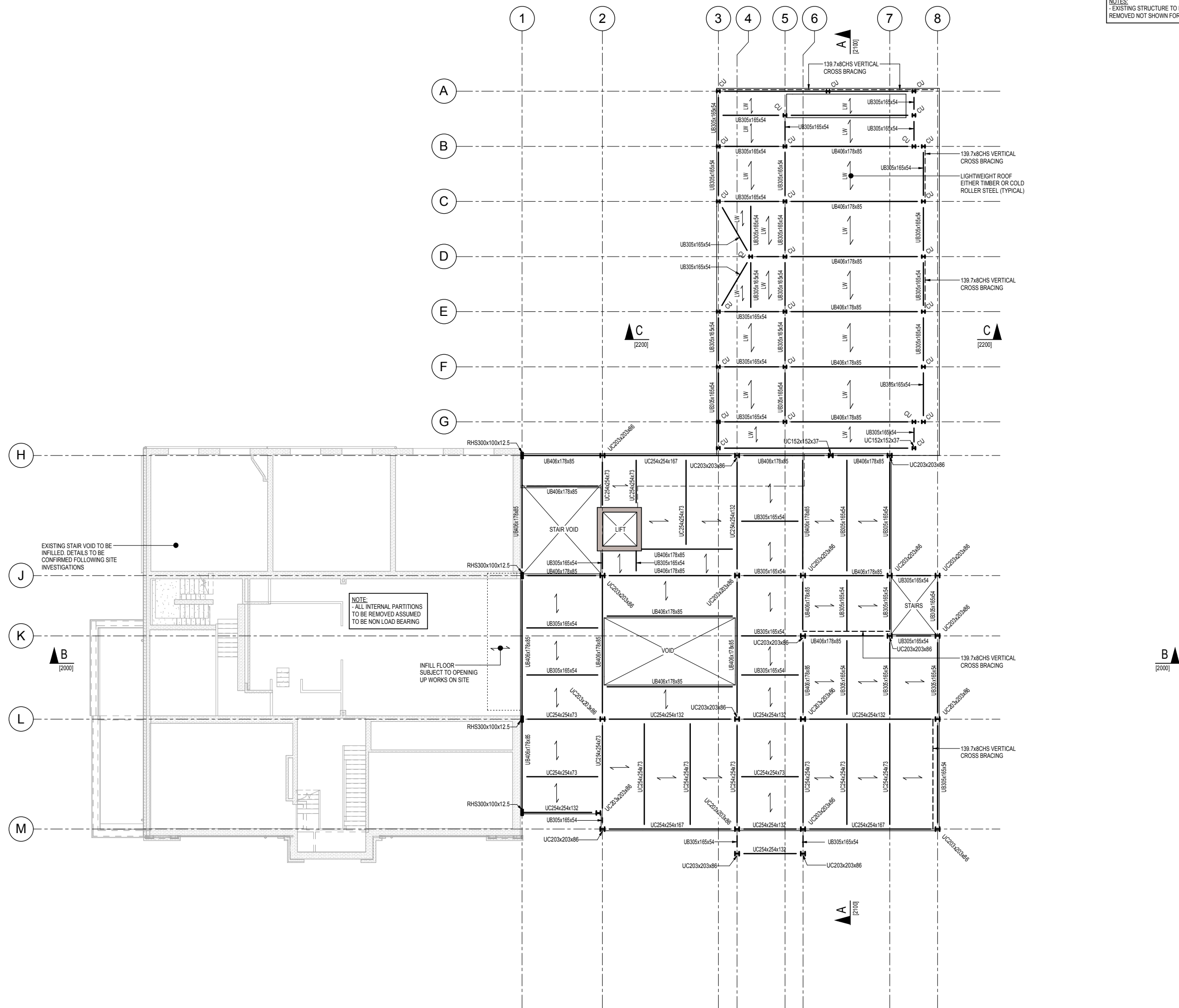
NOTES:  
- EXISTING STRUCTURE TO BE REMOVED NOT SHOWN FOR CLARITY

This drawing is to be read in conjunction with all relevant architects, engineers and specialists drawings and specifications.  
Do not scale from this drawing.

**LEGEND**

- EXISTING STRUCTURE
- NEW LOAD BEARING BLOCKWORK
- NEW LOAD BEARING BRICKWORK
- NEW REINFORCED CONCRETE
- NEW MASS CONCRETE
- PADSTONES
- LOAD BEARING STUDWORK
- NON LOAD BEARING WALLS
- LOAD BEARING STRUCTURE BELOW
- EXISTING STRUCTURE TO BE REMOVED
- NEW STEEL BEAMS
- NEW LINTELS OVER OPENINGS

- NOTES:
- = 150mm CONCRETE SLAB ON PROFILE METAL DECKING TO ACT COMPOSITELY WITH STEEL BEAM
  - = LIGHTWEIGHT ROOF EITHER TIMBER OR COLD ROLLER STEEL (TYPICAL)



EXISTING STAIR VOID TO BE INFILLED. DETAILS TO BE CONFIRMED FOLLOWING SITE INVESTIGATIONS

NOTE:  
- ALL INTERNAL PARTITIONS TO BE REMOVED ASSUMED TO BE NON LOAD BEARING

INFILL FLOOR SUBJECT TO OPENING UP WORKS ON SITE

**NOT FOR CONSTRUCTION**

P3	16.11.16	DP	PSD	Issued for Planning
P2	04.11.16	DP	PSD	Issued for Planning
P1	19.08.16	DP	PSD	Issued for Information & Comment
rev	date	by	chk	description

**elliottwood**  
Elliott Wood Partnership Ltd  
Wimbledon • Central London • Nottingham  
Consulting Structural and Civil Engineers  
tel: (020) 7499 5888. www.elliottwood.co.uk

project  
The Hall School,  
23 Crossfield Road,  
Hampstead,  
London NW3 4NU  
drawing title  
Proposed First Floor Plan

scale (s) 1:000@A1; 1:000@A3 date August 2016 drawn DP

project no. 2150206		drawing status Preliminary			
originator	zone	level	role	drg no.	revision
EW	00	L01	S	1010	P3



NOTES:  
- EXISTING STRUCTURE TO BE REMOVED NOT SHOWN FOR CLARITY

This drawing is to be read in conjunction with all relevant architects, engineers and specialists drawings and specifications.  
Do not scale from this drawing.

**LEGEND**

	EXISTING STRUCTURE
	NEW LOAD BEARING BLOCKWORK
	NEW LOAD BEARING BRICKWORK
	NEW REINFORCED CONCRETE
	NEW MASS CONCRETE
	PADSTONES
	LOAD BEARING STUDWORK
	NON LOAD BEARING WALLS
	LOAD BEARING STRUCTURE BELOW
	EXISTING STRUCTURE TO BE REMOVED
	NEW STEEL BEAMS
	NEW LINTELS OVER OPENINGS

NOTES:

- = 150mm CONCRETE SLAB ON PROFILE METAL DECKING TO ACT COMPOSITELY WITH STEEL BEAM
- = RAKING BEAM



**NOT FOR CONSTRUCTION**

P3	16.11.16	DP+	PSD	Issued for Planning
P2	04.11.16	DP+	PSD	Issued for Planning
P1	19.08.16	DP+	PSD	Issued for Information & Comment
rev	date	by	chk	description

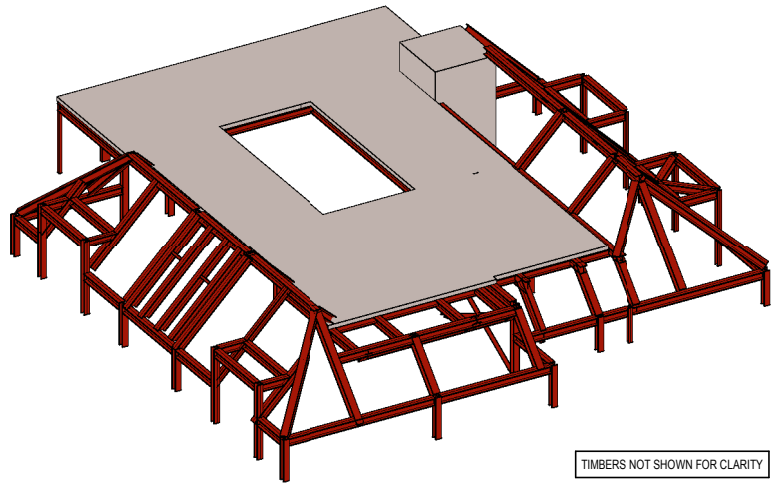
**elliottwood**

Elliott Wood Partnership Ltd  
Wimbledon • Central London • Nottingham  
Consulting Structural and Civil Engineers  
tel: (020) 7499 5888. www.elliottwood.co.uk

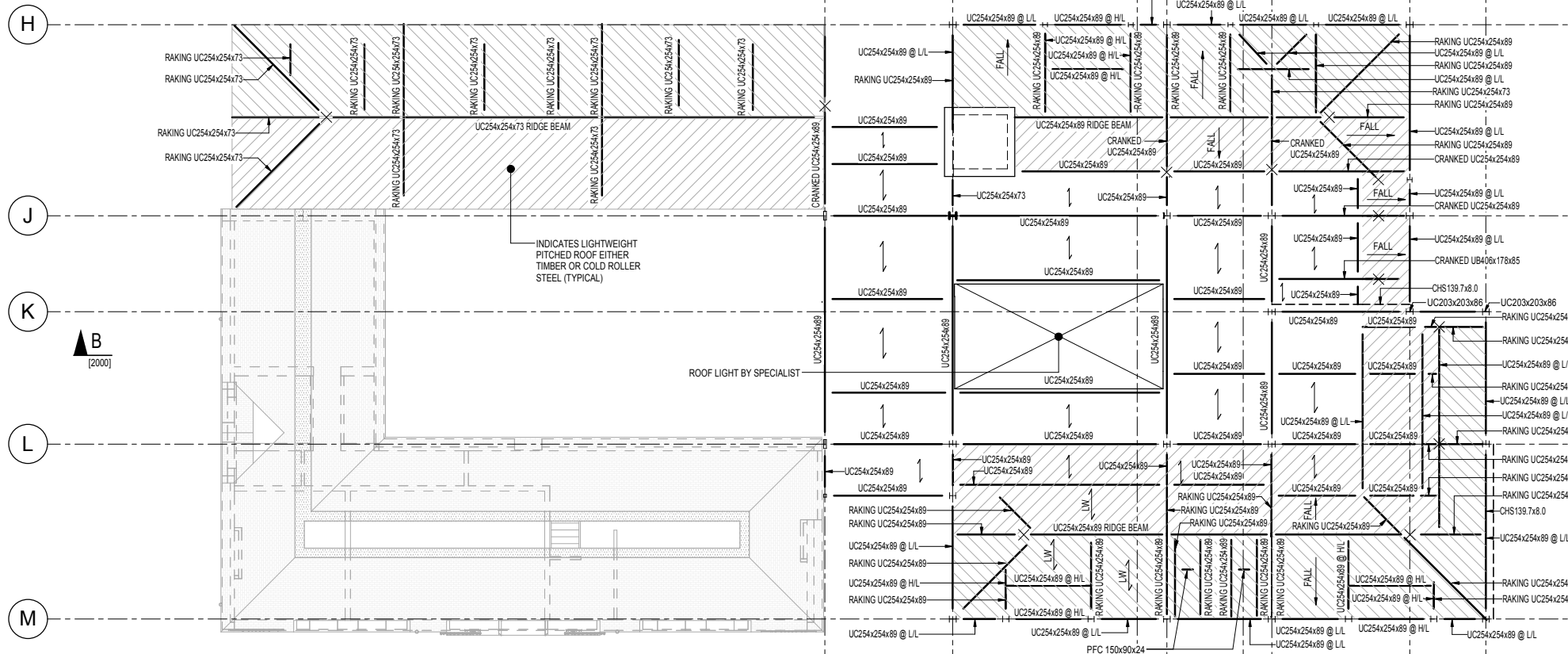
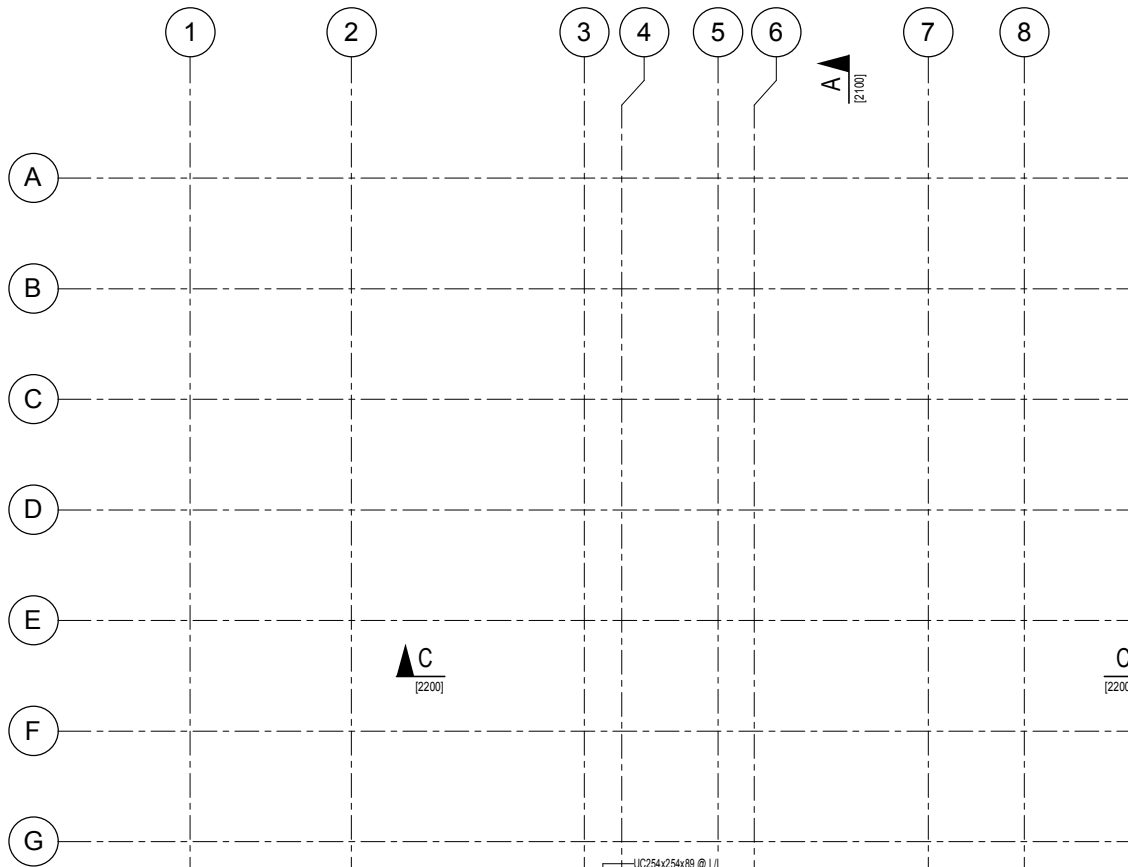
project  
The Hall School,  
23 Crossfield Road,  
Hampstead,  
London NW3 4NU  
drawing title  
Proposed Second Floor Plan

scale (s) 1:000@A1; 1:000@A3 date August 2016 drawn DP+

project no. 2150206		drawing status Preliminary			
originator	zone	level	role	dra. no.	revision
EW	00	L02	S	1020	P3



VIEW 1 - ROOF STRUCTURE



NOTES:  
- EXISTING STRUCTURE TO BE REMOVED NOT SHOWN FOR CLARITY

This drawing is to be read in conjunction with all relevant architects, engineers and specialists drawings and specifications.  
Do not scale from this drawing.

**LEGEND**

	EXISTING STRUCTURE
	NEW LOAD BEARING BLOCKWORK
	NEW LOAD BEARING BRICKWORK
	NEW REINFORCED CONCRETE
	NEW MASS CONCRETE
	PADSTONES
	LOAD BEARING STUDWORK
	NON LOAD BEARING WALLS
	LOAD BEARING STRUCTURE BELOW
	EXISTING STRUCTURE TO BE REMOVED
	NEW STEEL BEAMS
	NEW LINTELS OVER OPENINGS

NOTES:  
→ = 150mm CONCRETE SLAB ON PROFILE METAL DECKING TO ACT COMPOSITELY WITH STEEL BEAM

**NOT FOR CONSTRUCTION**

P3	16.11.16	DPr	PSD	Issued for Planning
P2	04.11.16	DPr	PSD	Issued for Planning
P1	19.08.16	DPr	PSD	Issued for Information & Comment
rev	date	by	chk	description

**elliottwood**  
Elliott Wood Partnership Ltd  
Wimbledon • Central London • Nottingham  
Consulting Structural and Civil Engineers  
tel: (020) 7499 5888. www.elliottwood.co.uk

project  
The Hall School,  
23 Crossfield Road,  
Hampstead,  
London NW3 4NU  
drawing title  
Proposed Roof Plan

scale (s) 1:000@A1; 1:000@A3 date August 2016 drawn DPr

project no. 2150206		drawing status Preliminary			
originator EW	zone 00	level ROF	role S	dra no. 1030	revision P3

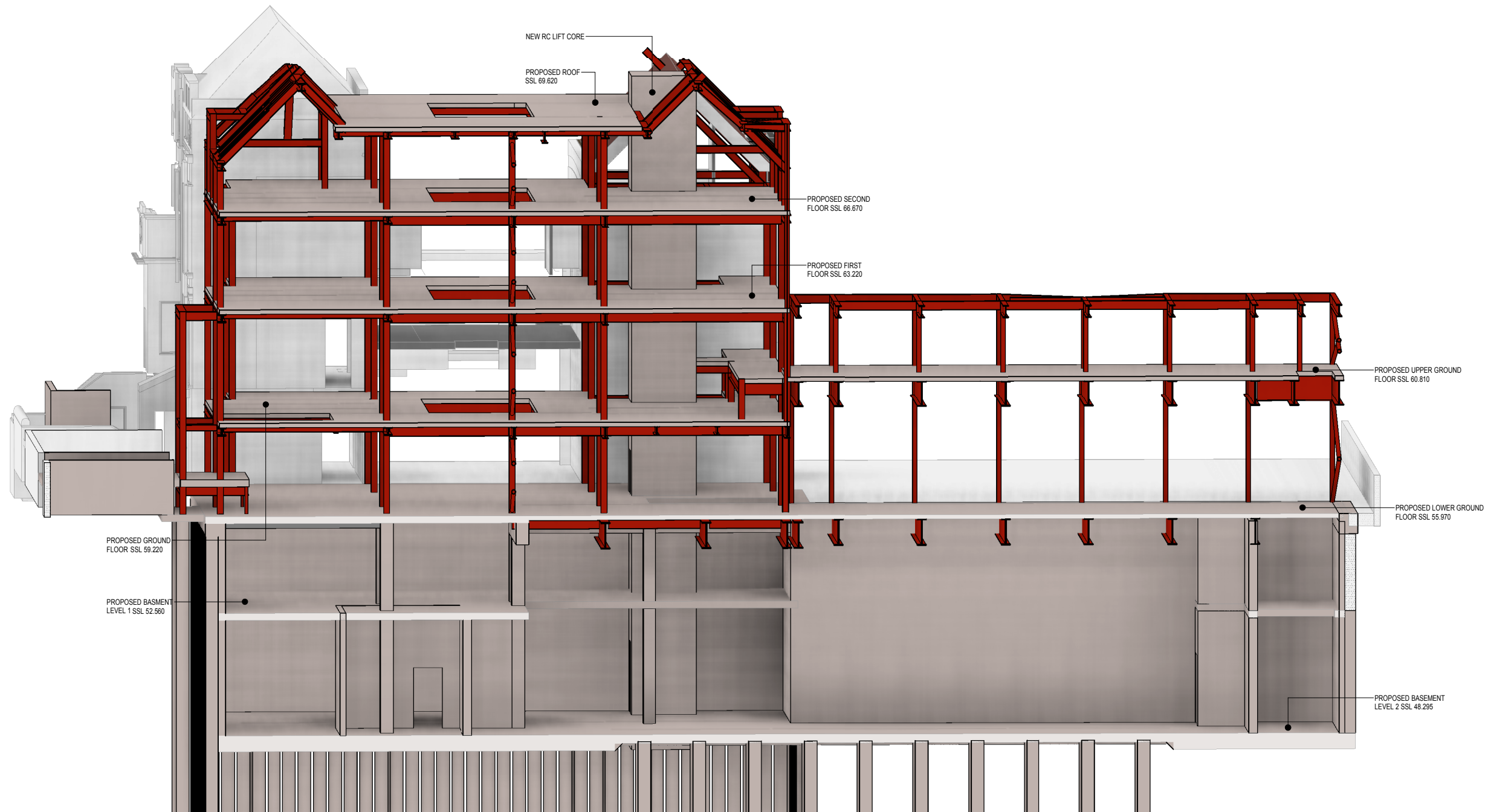


This drawing is to be read in conjunction with all relevant architects, engineers and specialists drawings and specifications.

Do not scale from this drawing.

**ISOMETRIC VIEW:**

- EXISTING STRUCTURE
- EXISTING STRUCTURE TO BE REMOVED
- NEW REINFORCED CONCRETE
- NEW MASS CONCRETE
- NEW STRUCTURAL STEELWORK
- NEW LOAD BEARING BLOCKWORK
- NEW LOAD BEARING BRICKWORK
- NEW TIMBER
- NEW GLAZING



**SECTION A-A**  
N.T.S.

**NOT FOR CONSTRUCTION**

P2	04.11.16	DP:	PSD	Issued for Planning
P1	19.08.16	DP:	PSD	Issued for Information & Comment
rev	date	by	chk	description

**elliottwood**  
Elliott Wood Partnership Ltd  
Wimbledon • Central London • Nottingham  
Consulting Structural and Civil Engineers  
tel: (020) 7499 5888. www.elliottwood.co.uk

project  
The Hall School,  
23 Crossfield Road,  
Hampstead,  
London NW3 4NU  
drawing title  
Proposed 3D Long Section A-A

scale (s)	date	drawn
N.T.S.	August 2016	DP:

project no. 2150206		drawing status Preliminary			
originator	zone	level	role	drg no.	revision
EW	00	SEC	S	2000	P2