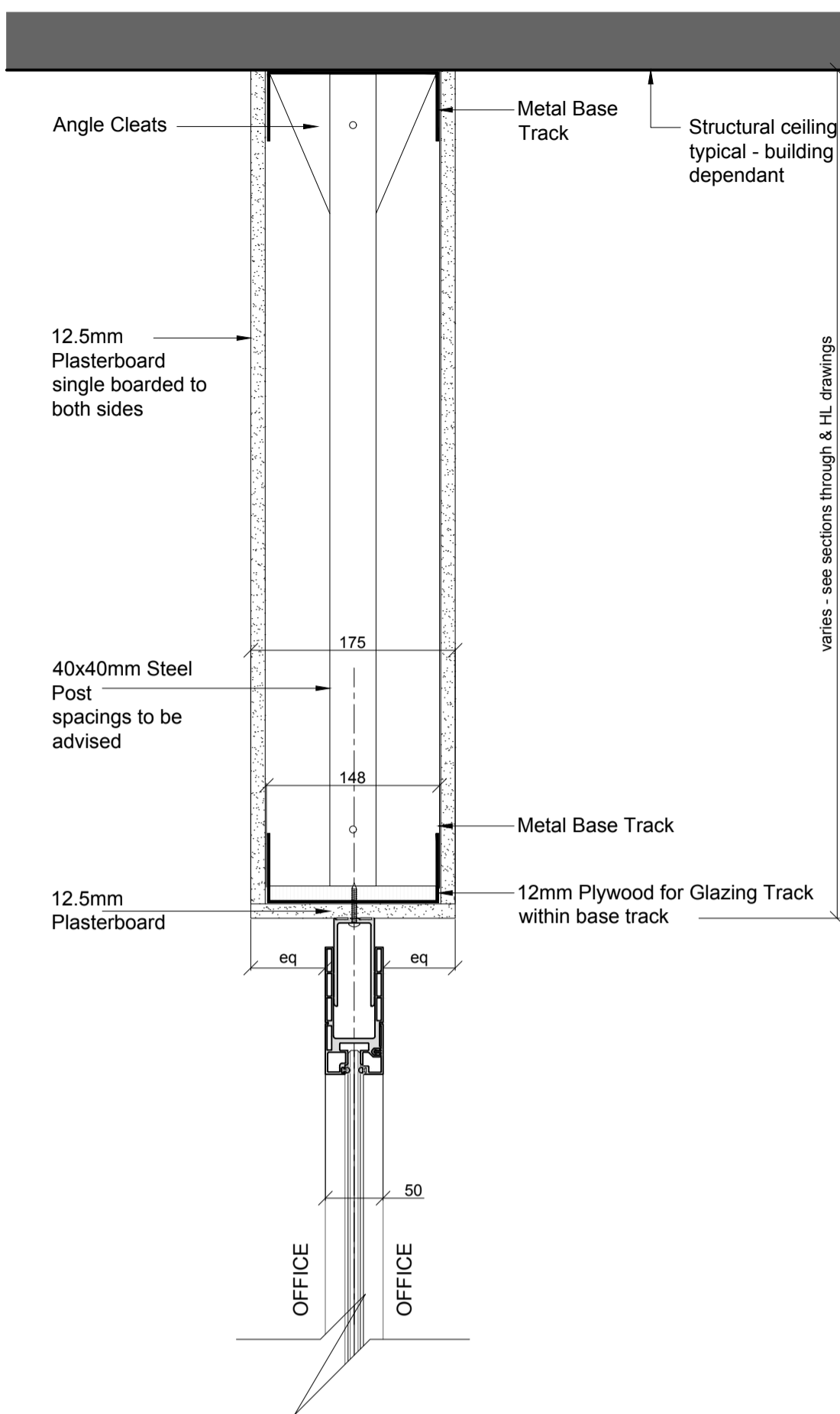


DRAWING TO BE READ IN CONJUNCTION WITH HIGH LEVEL SERVICES CO-ORDINATION DRAWING

\*LAYOUT OF SERVICES SHOWN NOTIONALLY- IT MUST BE CO-ORDINATED WITH MECHANICAL, SPRINKLERS, LIGHTING ETC

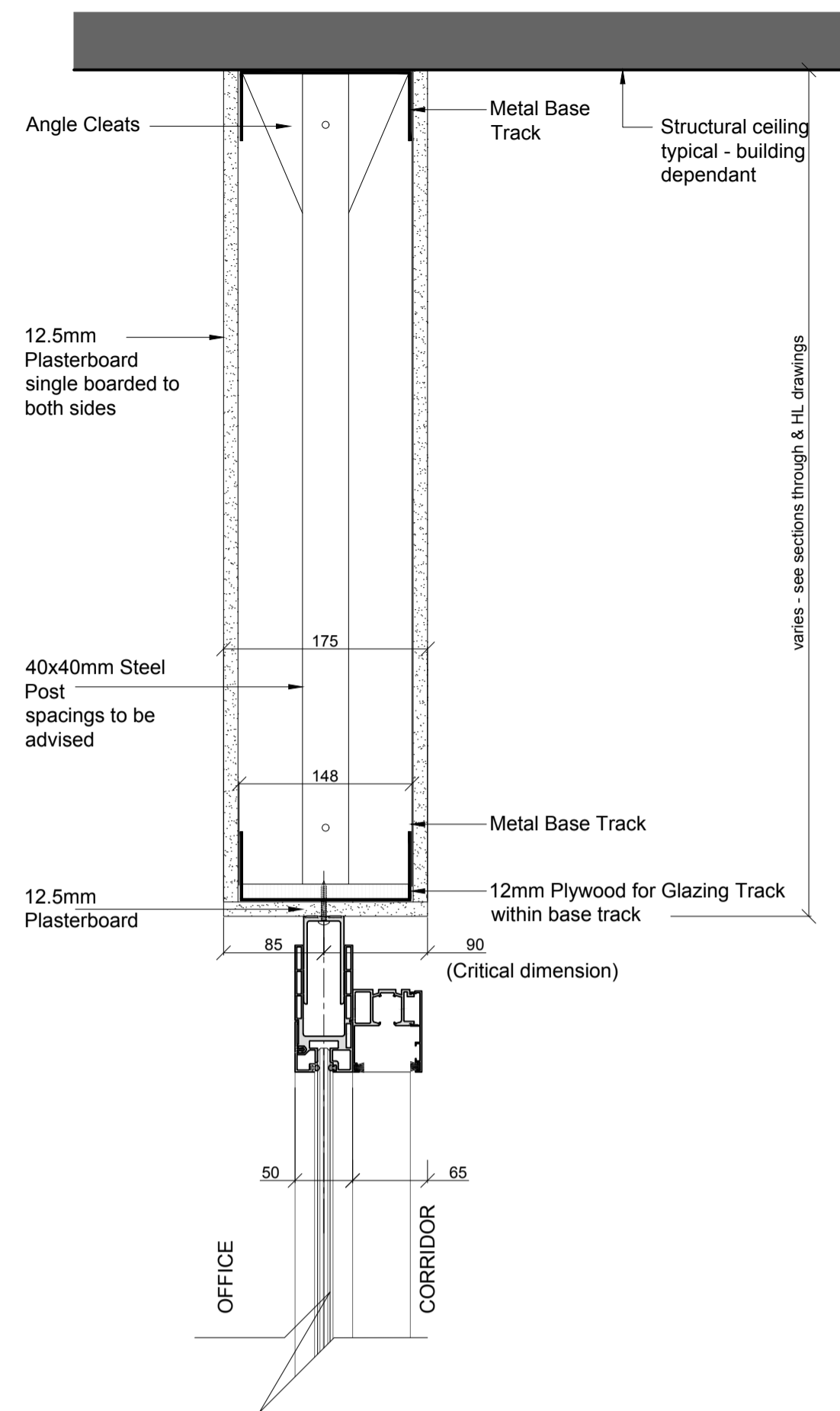
NOTE:  
Partition Installers to locate their stud positions to avoid mechanical plant passing through & work inconjunction with mechanical engineers details

Glass partitioning system may differ from project to project - details shown are notional and typical.



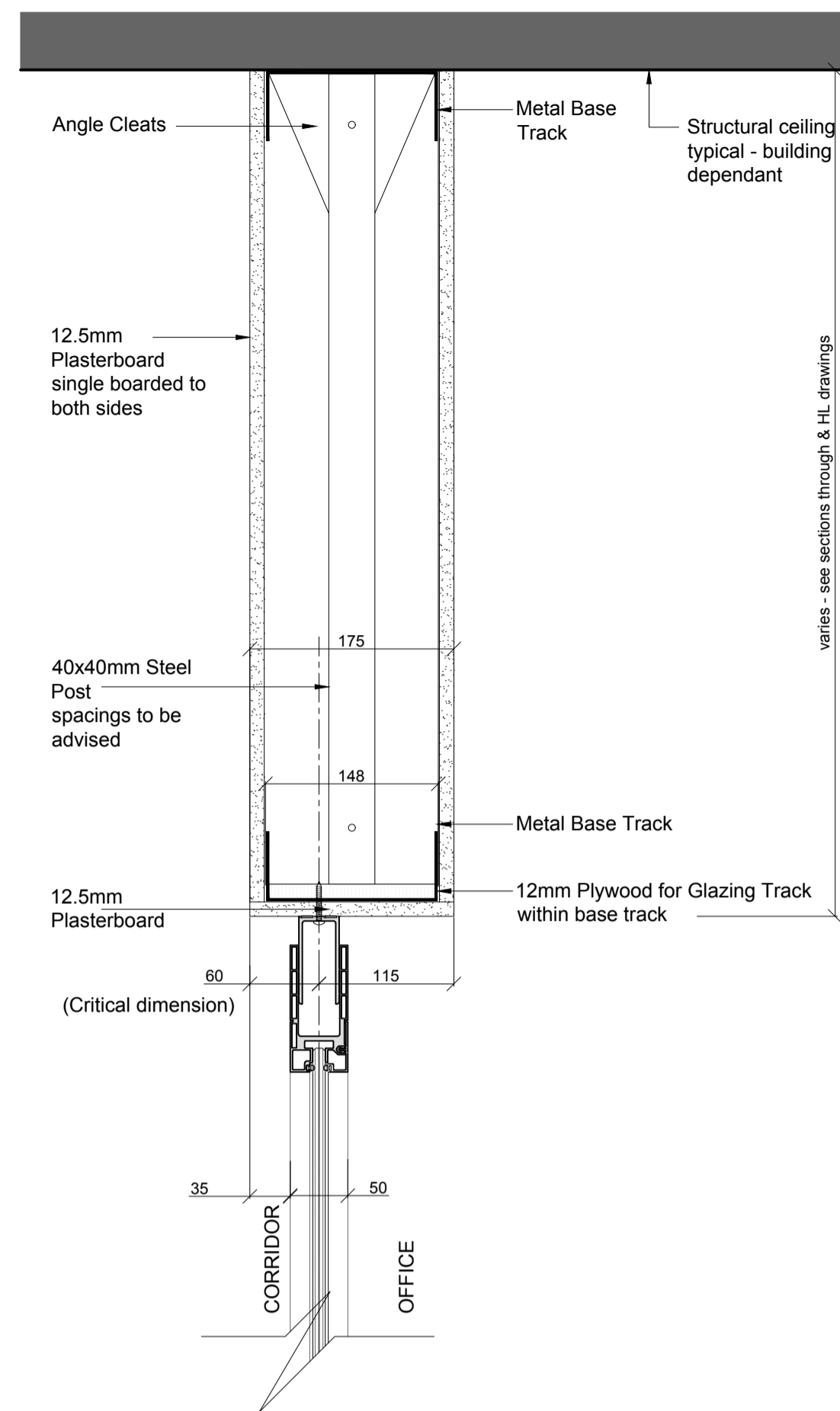
**DETAIL P1**  
\*showing partition cross partitions (centred)

TYPICAL BULKHEAD TO STRUCTURAL CEILING  
SCALE 1:5



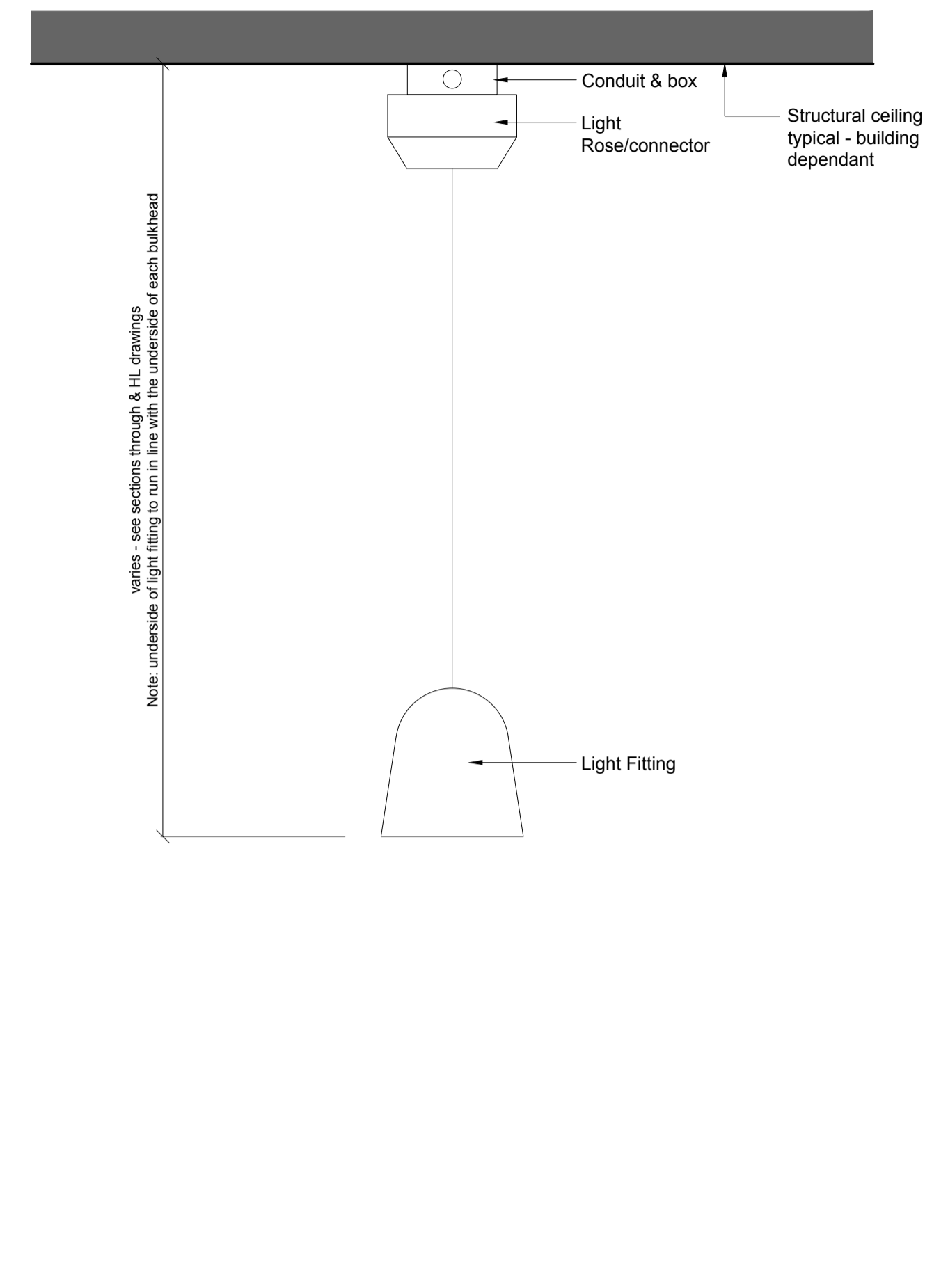
**DETAIL P2**  
\*showing partition corridor partitions (65mm offset with sliding doors on corridor side)

TYPICAL BULKHEAD TO STRUCTURAL CEILING  
SCALE 1:5

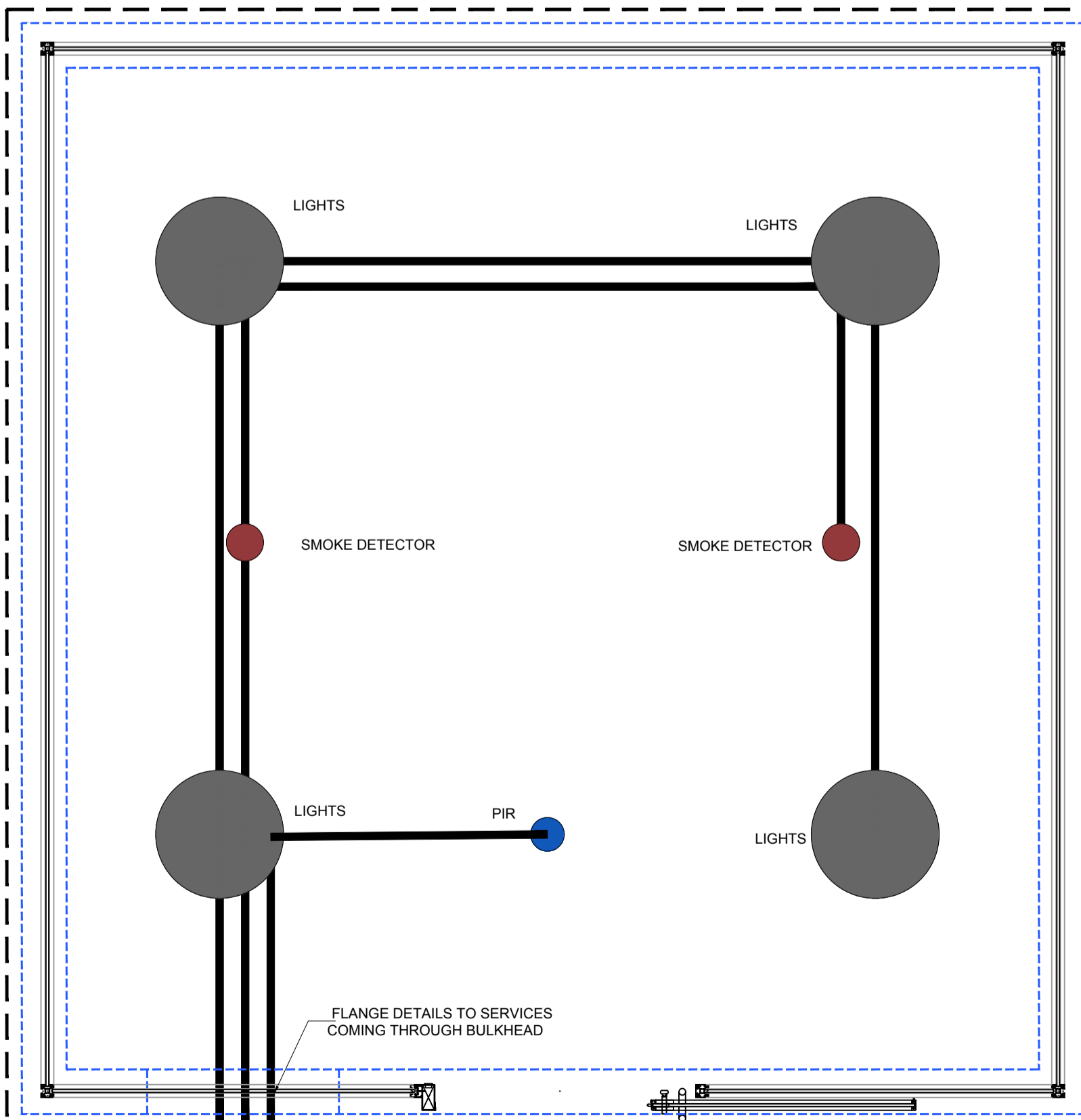


**DETAIL P3**  
\*showing partition corridor partitions (35mm offset with NO sliding door on corridor side)

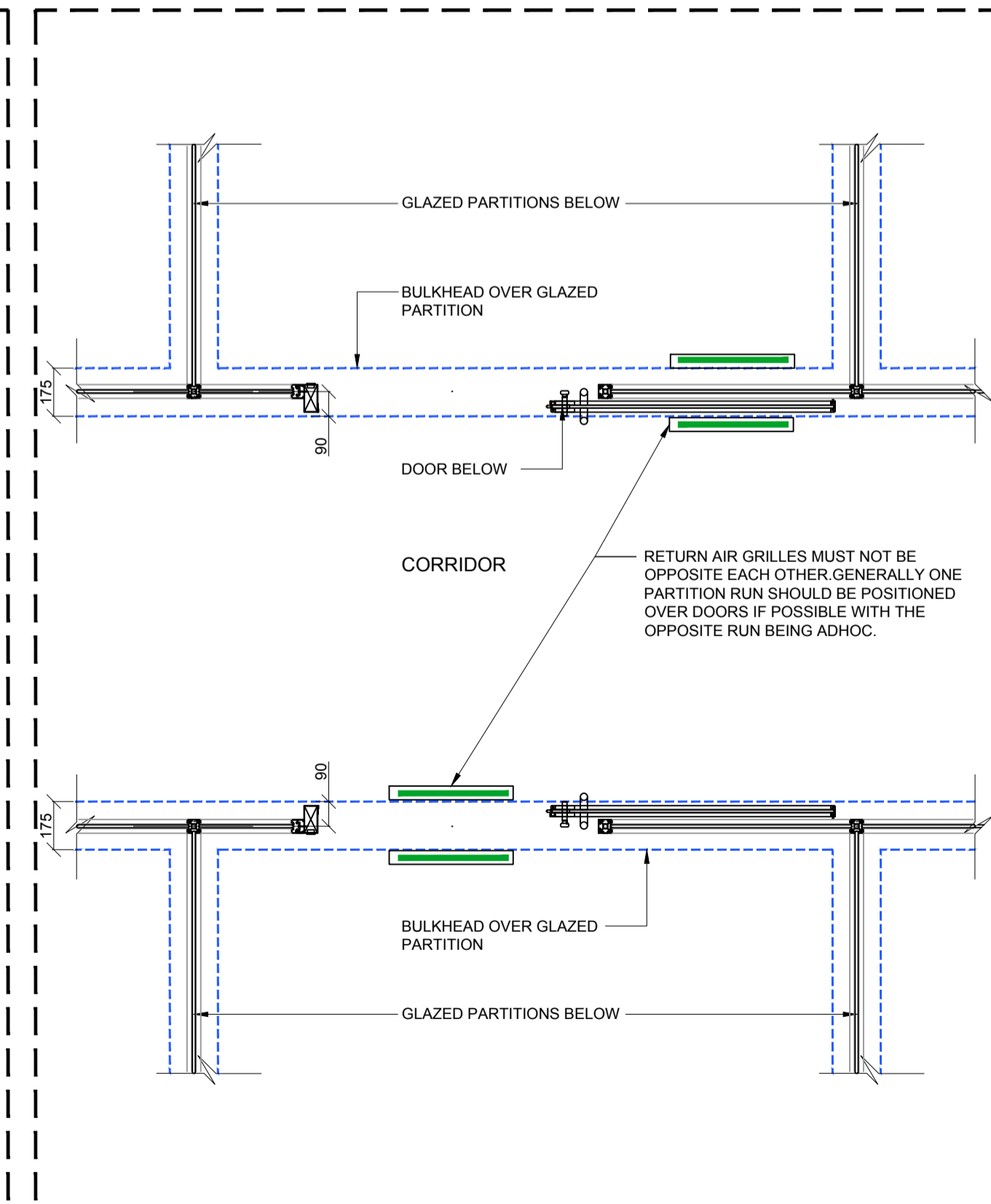
TYPICAL BULKHEAD TO STRUCTURAL CEILING  
SCALE 1:5



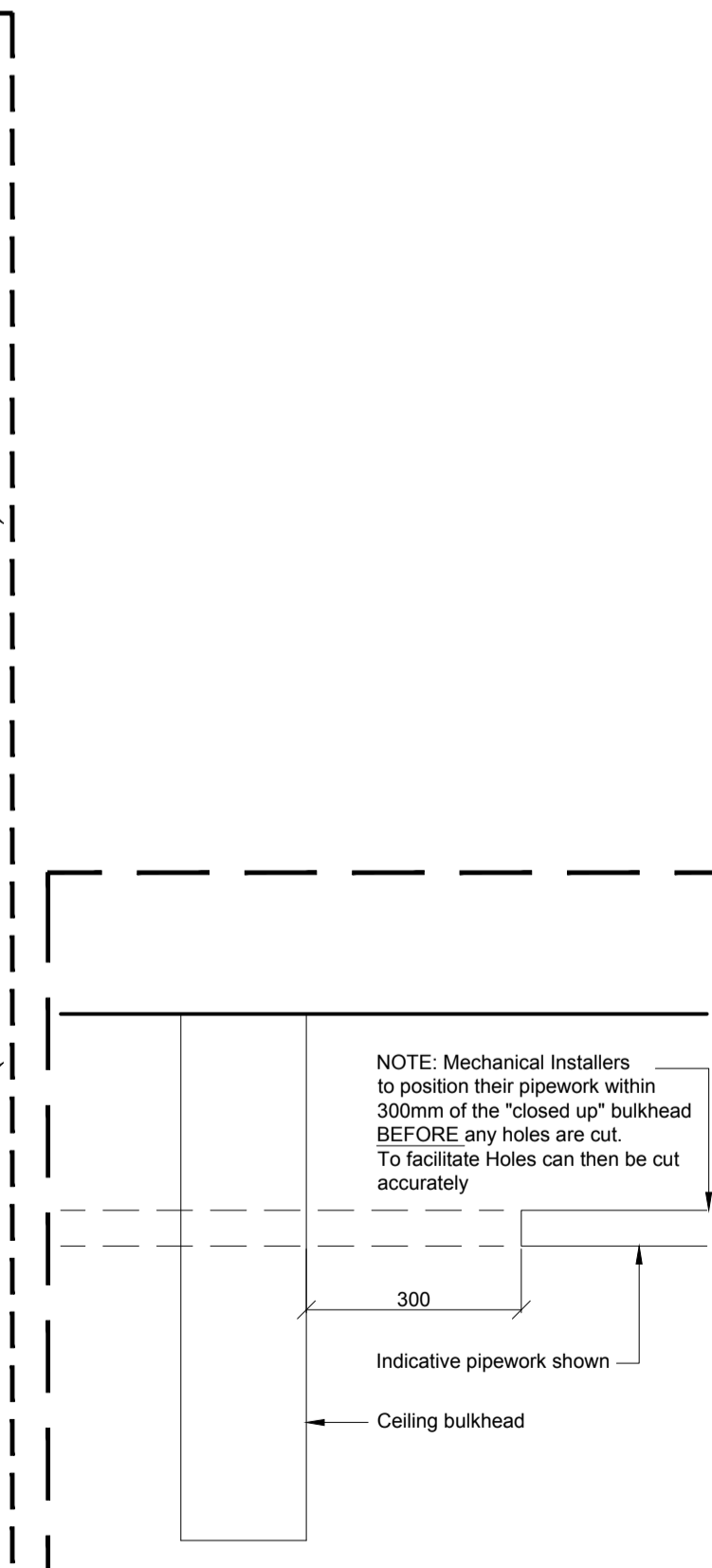
**DETAIL P4**  
TYPICAL PENDANT LIGHT TO STRUCTURAL CEILING  
SCALE 1:5



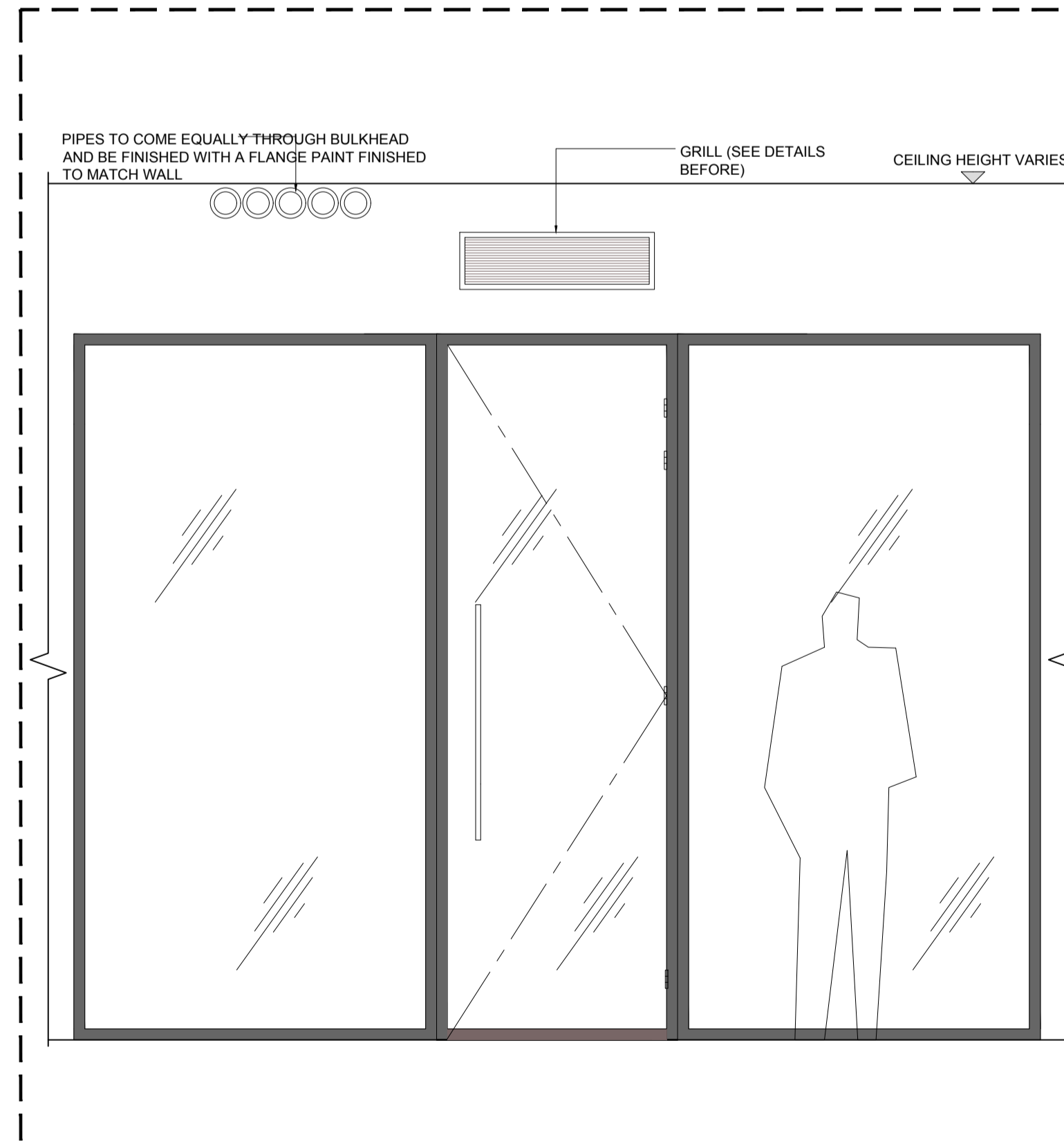
TYPICAL OFFICE IN PLAN VIEW TO SHOW CONDUIT ROUTES/CONCEPT  
SCALE 1:20



TYPICAL OFFICE BULKHEAD PLAN (sliding door arrangement)  
SCALE 1:20



TYPICAL PIPEWORK PENETRATIONS  
SCALE 1:10



CORRIDOR ELEVATION OF OFFICE ENTRANCE  
SCALE 1:20

Rev	Descriptive amendments	DS	06.10.16
Pre-Design - Construction - As Built			

**PRE DESIGN**

Client  
**WeWork**

Client Contact  
Site Address  
**03 Waterhouse Square - PHASE 3**  
Holborn Bars  
London

Drawing Title  
**Typical Ceiling Bulkhead to Exposed Ceiling Details**

Account Manager  
**Rob Gregory**

Designer/ Senior Tech. Designer / Project Manager  
**Ellen Fehl / Glenda Puntel / Martin Leeper**

Scale	Drawn by	First Drawing Date
<b>VARIES @ A1</b>	<b>DS</b>	<b>06/10/2016</b>

Contract Number	Building	Floor	Detail	Revision
<b>1076</b>	<b>01</b>	<b>ALL</b>	<b>MS03</b>	<b>/</b>

**ltb.** 1st Floor  
322 High Holborn  
London WC1V 7PB  
T: +44 (0)20 7553 9500