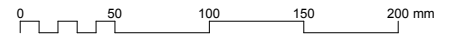
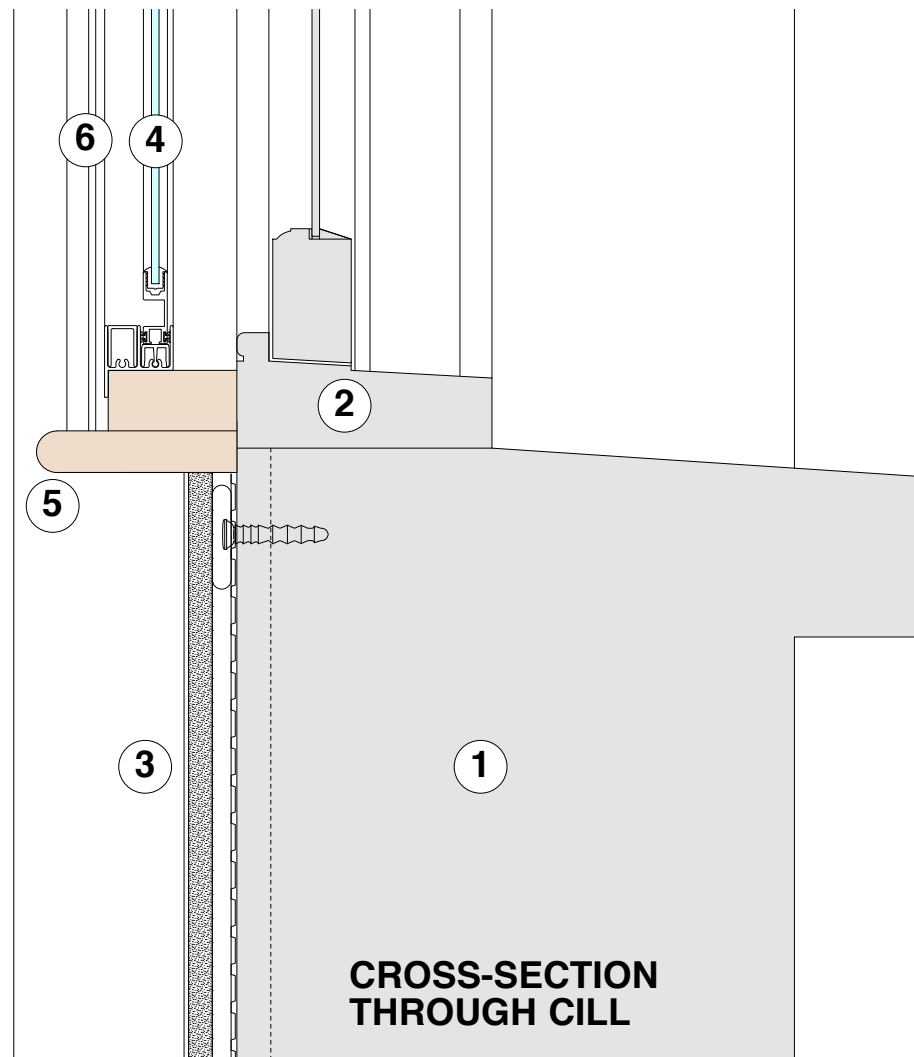
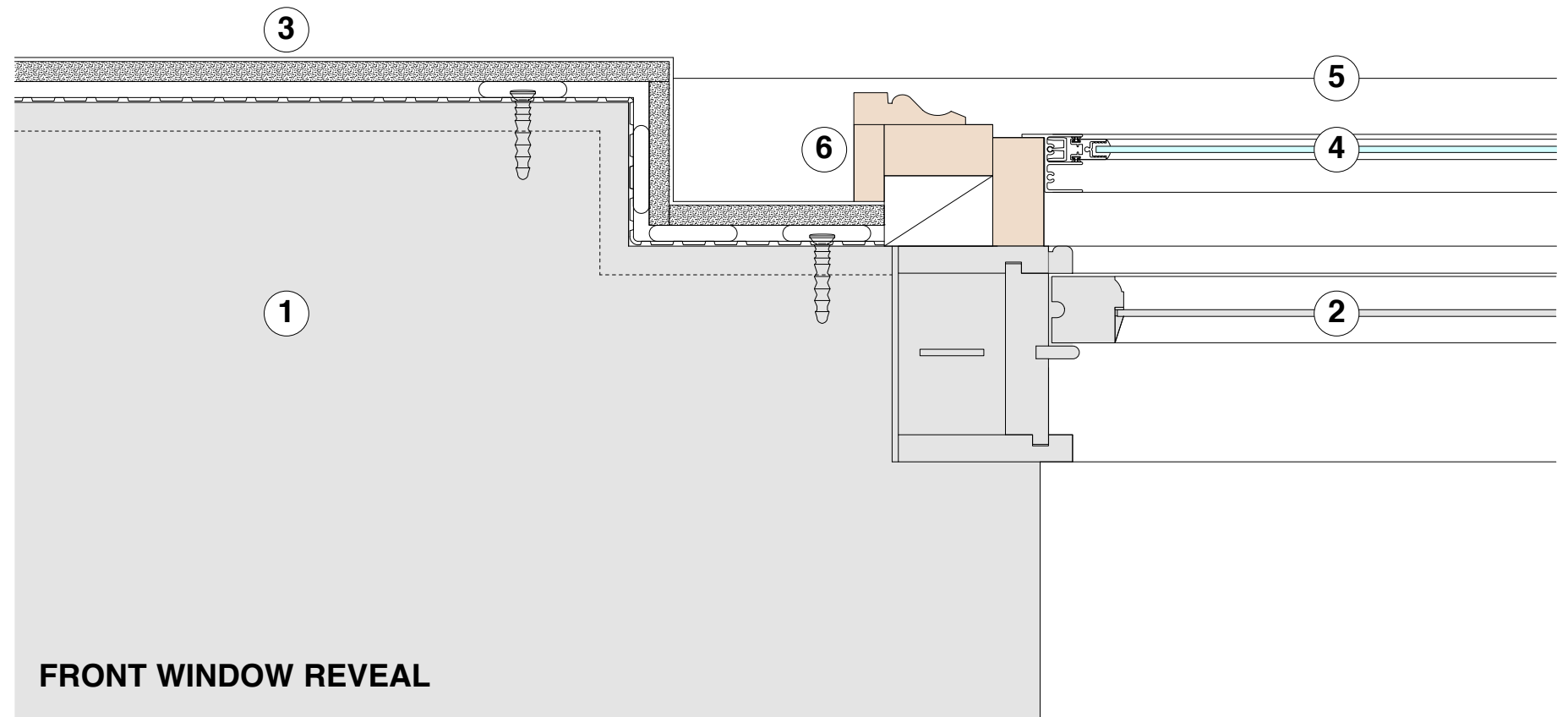



**KEY:**

- 1** = existing solid wall construction (including retained 1980s sand/cement render)
- 2** = existing sash window
- 3** = 12.5 mm plasterboard with Thistle finish coat on dabs on 3 mm thick Newton 503 vapour control/isolating membrane fixed to wall with Multiplug nailable plugs - 28 mm total thickness
- 4** = Selectaglaze secondary glazing (overall 68 mm standoff from inner face of sash window box frame)
- 5** = painted timber cill board
- 6** = painted softwood joinery (frame packing etc for secondary glazing) including ogee architraves



client <b>ONE HOUSING GROUP</b>	
job title FREDERICK STREET PORTFOLIO LONDON	
drawing 6 AMPTON PLACE (LEFT HAND UNIT) BASEMENT DRY LINING DETAILS	
scale 1:2 @ A1 or 1:4 @ A3	date NOVEMBER 2016
drawn PS	checked SA
	
PROJECT 5 ARCHITECTURE LLP 8 Millers Street London E2 9JL T: +44 (0)20 7739 9131 F: +44 (0)20 7739 3667 E: info@p5.co.uk	
drawing no. <b>6214-FAC-D242</b>	