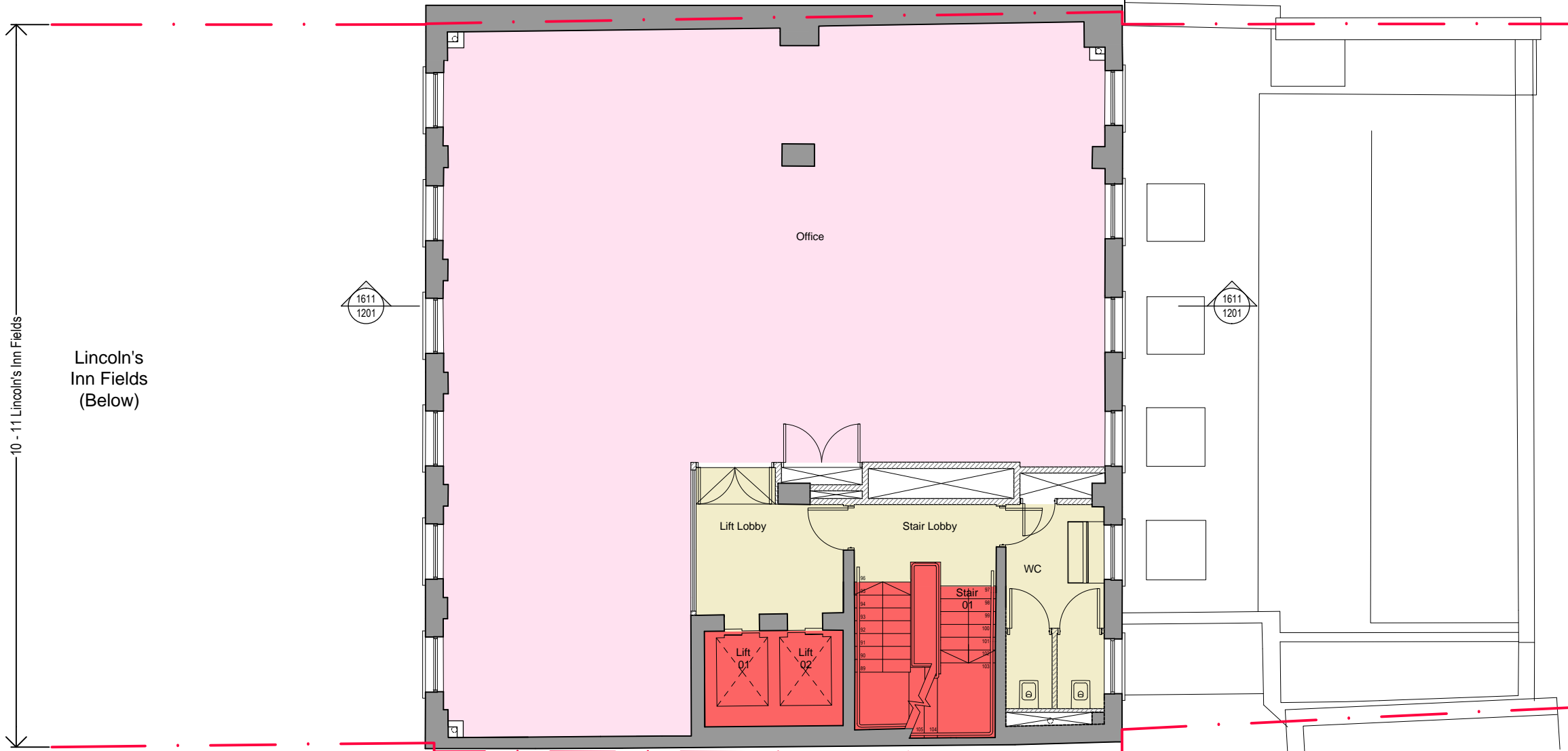


Key

Office
 Common

8-9 Lincoln's Inn Fields



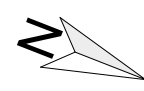
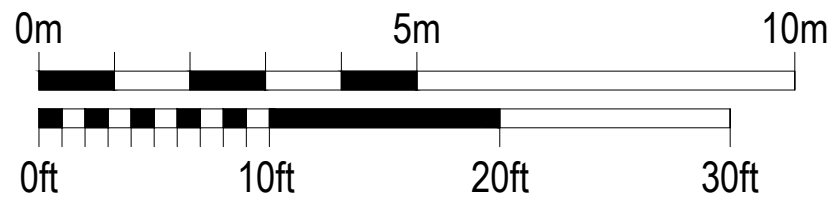
12-14 Lincoln's Inn Fields

Do not scale from this drawing, except for town planning purposes.
 Work is figured dimensions only.
 This drawing is the property of Brimelow McSweeney Architects and copyright is reserved by them.
 This drawing is issued on condition that it is not copied, used or disclosed by or to any unauthorised person without the prior written consent of Brimelow McSweeney Architects.
 The areas on the drawing have been measured directly from a CAD drawing and have no tolerances added or subtracted.
 The areas have been calculated in accordance with the Code of Measuring Practice, 6th Edition (2007) using the stated options NIA, GIA, GEA. They are approximate and relate to the likely areas of the building at the current state of the design. Any decisions to be made on the basis of these predictions, whether as to project viability, pre-letting, lease agreements and the like, should make allowance for the following:
 - Design development
 - Accurate site survey, site levels and dimensions need to be fully evaluated
 - Allowance for construction methods and building tolerances.
 - Local authority consents

rev	date	drawn by	chkd	description
/	22.07.16	SPD	SE	Planning
A	13.10.16	SPD	SE	Planning

10 - 11 Lincoln's Inn Fields
 Lincoln's Inn Fields
 (Below)

Whetstone Park
 (Below)



status		
FOR PLANNING		
BRIMELOW McSWEENEY ARCHITECTS <small>26 Great Queen Street, Covent Garden, London WC2B 5EL tel: 020 7531 7835 - email: admin@bm-architects.co.uk</small>		
project 10-11 Lincoln's Inn Fields London		
title Proposed Fourth Floor Plan		
scale	date	drawn
1:100@A3	21-07-16	SPD
drawing no.	revision	
1611-1105	A	