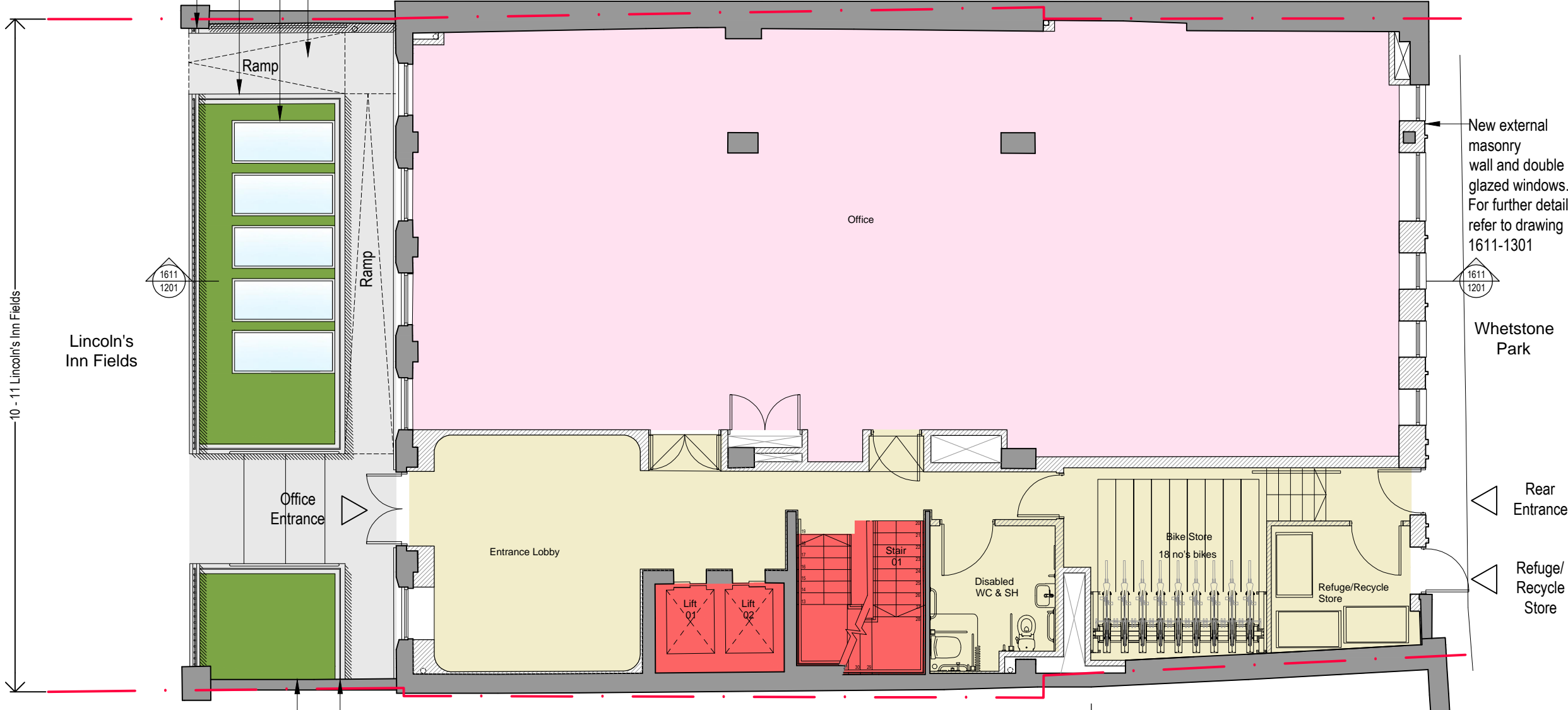
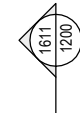


Key

Office
 Common

- New railings, gate and plinth to replace existing
- New perimeter glazed balustrade
- New roof lights to replace existing
- New stone paving to ramp

8-9 Lincoln's Inn Fields



New external masonry wall and double glazed windows. For further details refer to drawing 1611-1301

Whetstone Park

Rear Entrance

Refuge/Recycle Store

12-14 Lincoln's Inn Fields



- New perimeter glazed balustrade
- New buxus hedges to "front garden"

Do not scale from this drawing, except for town planning purposes.
 Work is figured dimensions only.
 This drawing is the property of Brimelow McSweeney Architects and copyright is reserved by them.
 This drawing is issued on condition that it is not copied, used or disclosed by or to any unauthorised person without the prior written consent of Brimelow McSweeney Architects.
 The areas on the drawing have been measured directly from a CAD drawing and have no tolerances added or subtracted.
 The areas have been calculated in accordance with the Code of Measuring Practice, 6th Edition (2007) using the stated options NIA, GIA, GEA. They are approximate and relate to the likely areas of the building at the current state of the design. Any decisions to be made on the basis of these predictions, whether as to project viability, pre-letting, lease agreements and the like, should make allowance for the following:
 - Design development
 - Accurate site survey, site levels and dimensions need to be fully evaluated
 - Allowance for construction methods and building tolerances.
 - Local authority consents

rev	date	drawn by	chkd	description
/	22.07.16	SPD	SE	Planning
A	13.10.16	SPD	SE	Tender Issue

status **FOR PLANNING**

BRIMELOW McSWEENEY ARCHITECTS
 26 Great Queen Street, Covent Garden, London WC2B 5EL
 tel: 020 7631 7835 - email: admin@bm-architects.co.uk

project
 10-11 Lincoln's Inn Fields
 London

file
 Proposed Ground Floor Plan

scale	date	drawn
1:100@A3	21-07-16	SPD

drawing no.	revision
1611-1101	A

