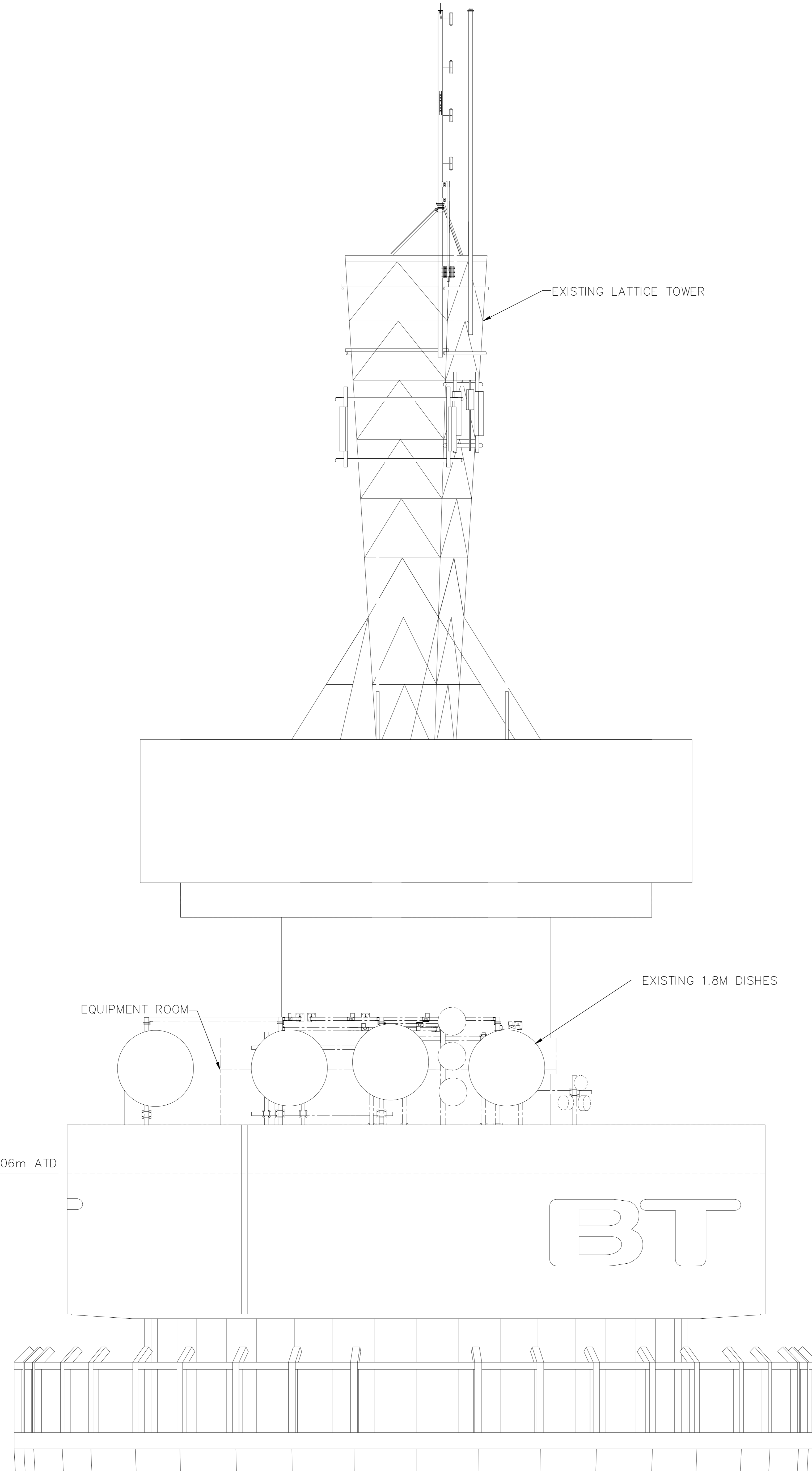
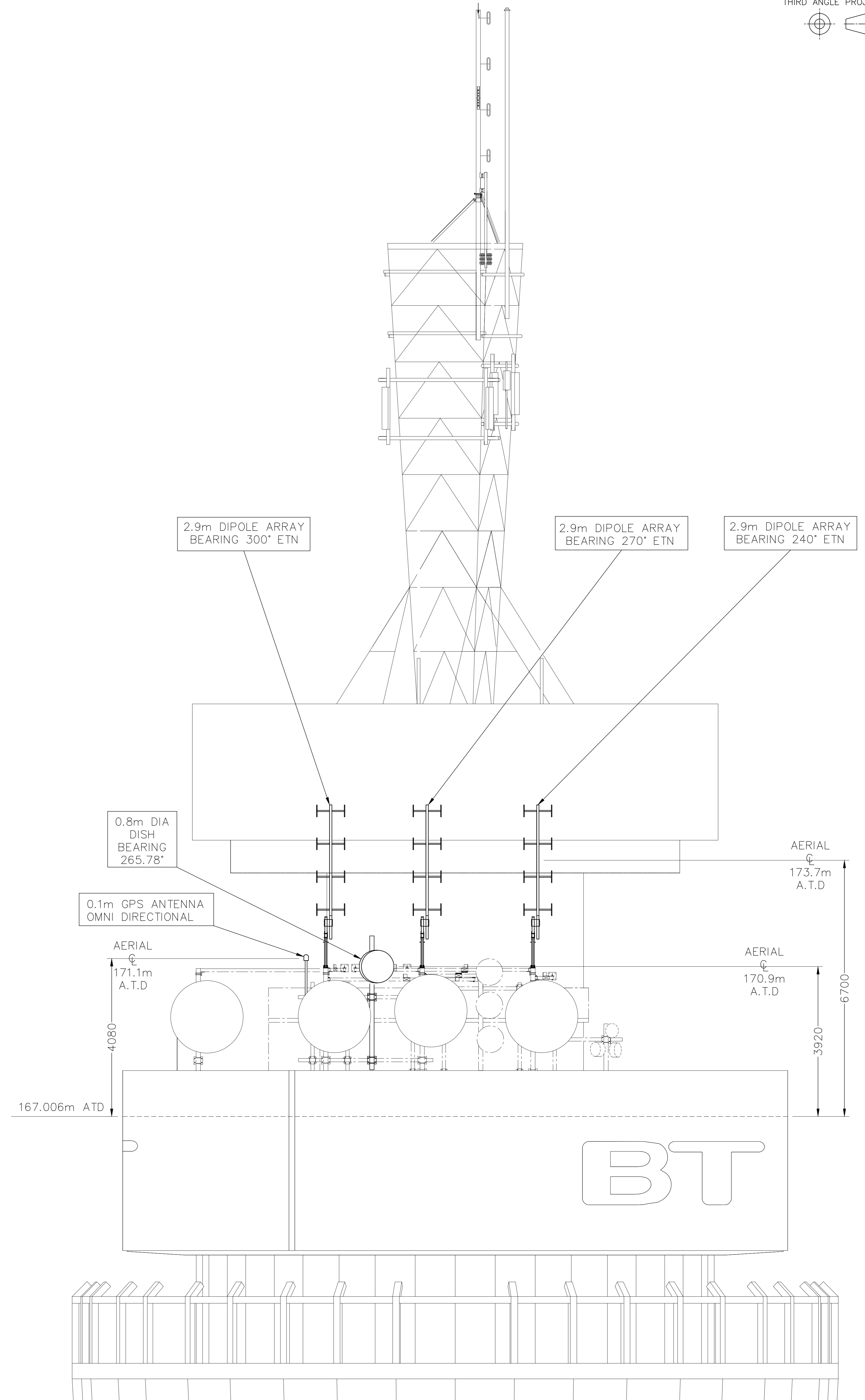


ELEVATION VIEW OF TOWER FACING WEST
SCALE 1:300



ENLARGED PART ELEVATION VIEW OF TOWER FACING WEST AT 167.006m ATD
SHOWING EXISTING AERIALS
SCALE 1:50



ENLARGED PART ELEVATION VIEW OF TOWER FACING WEST AT 167.006m ATD
SHOWING PROPOSED AERIAL
SCALE 1:50

DRN S.A.D	ANY MODIFICATION TO THE DRAWING OR THE USE OF ALTERNATIVE ITEMS TO THOSE SPECIFIED MUST BE AGREED WITH THE DESIGNER.
CKD	
CERTIFICATION DESIGNER	
CLIENT A.MILLER	
DATE 27 09 2016	

MATERIAL	GPS AERIAL MOVED.
FINISH	S.A.D 14/11/2016

DIMENSIONS IN mm UNLESS OTHERWISE STATED		© British Telecommunications plc 2015	DO NOT SCALE	ORIGINAL SCALE AS SHOWN
LONDON TELECOM TOWER PLANNING PROPOSAL FOR 0.8mm DISH, 0.1m GPS AERIAL, 3x 2.9m DIPOLE ARRAY AERIALS ON WEST FACE AT 167M LEVEL		C	REFERENCES	
AMENDMENT	ISSUE BT TSO	UK RSDO	WL 4005107	SHT 03 OF 03