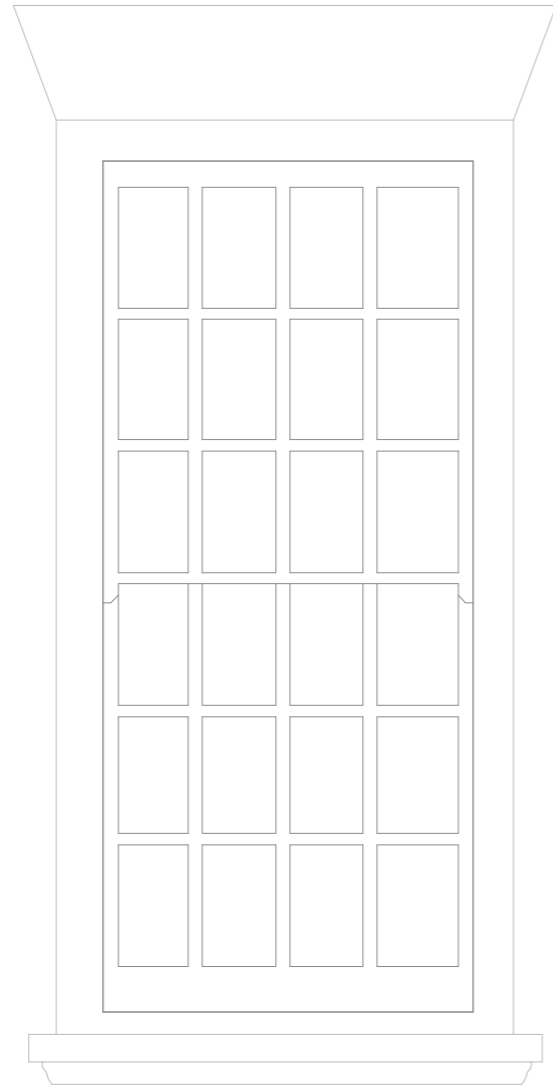


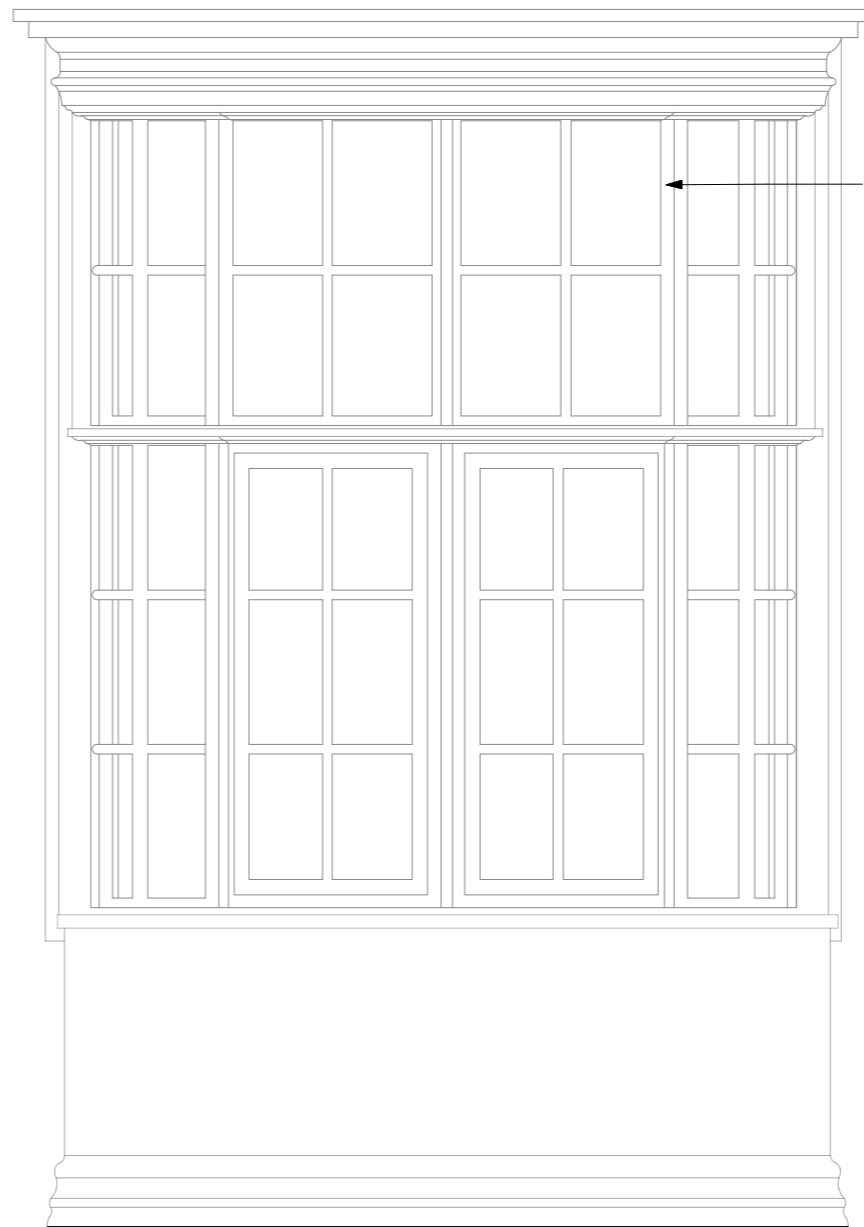
WINDOW: TYPE 1. (W09)(W10)(W11)(W12)(W13)
(W14)(W15)(W16)

OVERHAUL EXISTING SASH WINDOWS. FIT WITH SECONDARY GLAZING AND REVEAL LINER APPLIED. REFER TO DRAWING SK 06 FOR DETAILS.



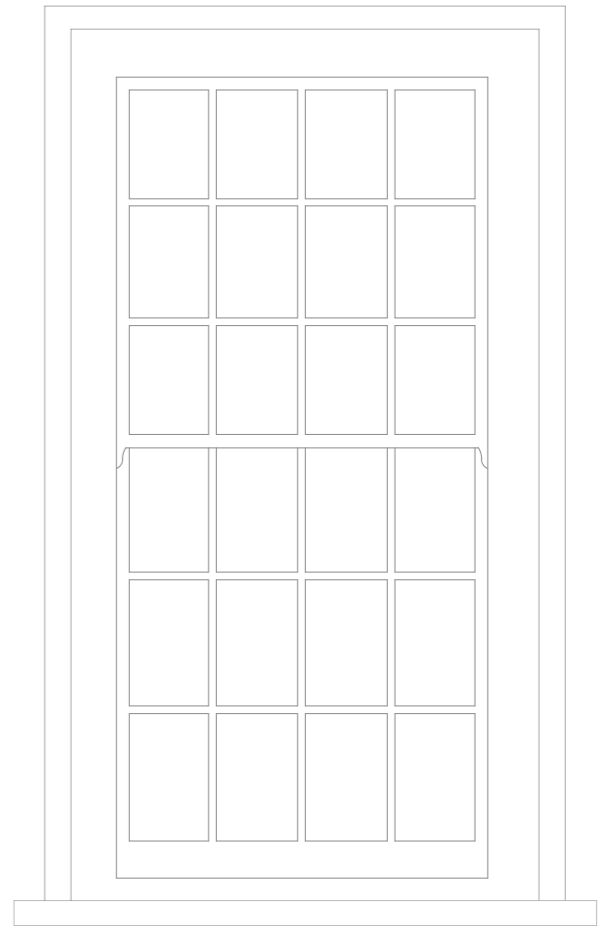
WINDOW: TYPE 2. (W17)(W18)

OVERHAUL EXISTING SASH WINDOWS. SECONDARY GLAZING AND REVEAL LINER APPLIED WITHIN EXTENDED SILL AND NEW ARCHITRAVES. REFER TO DRAWING SK 06 FOR DETAILS.



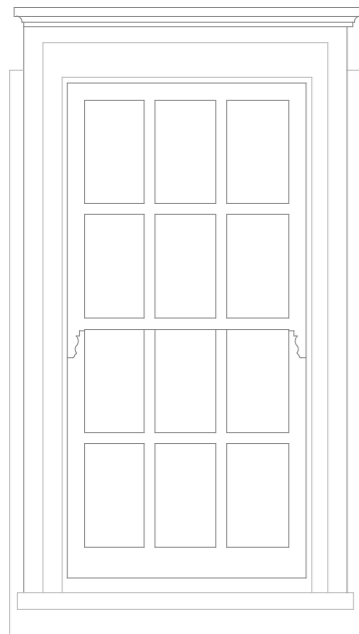
WINDOW: TYPE 3. (W04)(W05)

'MAKE GOOD' TIMBER + CRITTALL CASEMENTS. REFER TO SK 07 FOR DETAILS.



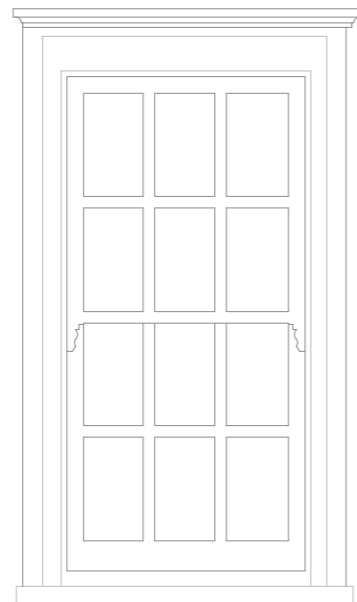
WINDOW: TYPE 4. (W01)(W02)(W03)

OVERHAUL EXISTING SASH WINDOWS. REFER TO SK 07 FOR DETAILS.



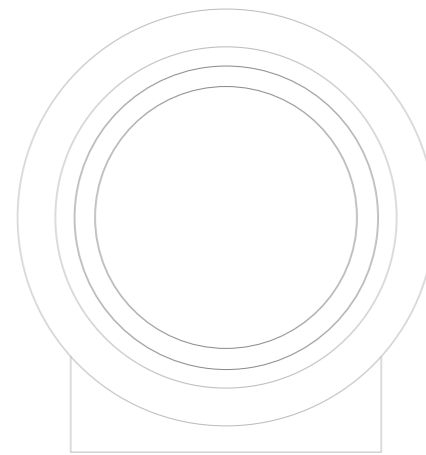
WINDOW: TYPE 5. (W06)(W07)

TO BE OVERHAULED + REDECORATED.



WINDOW: TYPE 6 (W08)

TO BE OVERHAULED + REDECORATED.



WINDOW: TYPE 7. (W19)

WINDOW TO BE INVESTIGATED FURTHER AS CURRENTLY COVERED BY JOINERY.



Charlton
Brown
Architects

Flat 8, Inverforth House, London

Proposed Window Details

1316 / SK 05 / R 01

The Belvedere 2 Back Lane Hampstead London NW3 1HL
T 020 7794 1234 E office@charltonbrown.com

Scale: 1: 20 @A3

This drawing is copyright

Please follow the drawings exactly. If you find errors or omissions ask for clarification. Do not proceed without revised instructions. No dimensions to be scaled