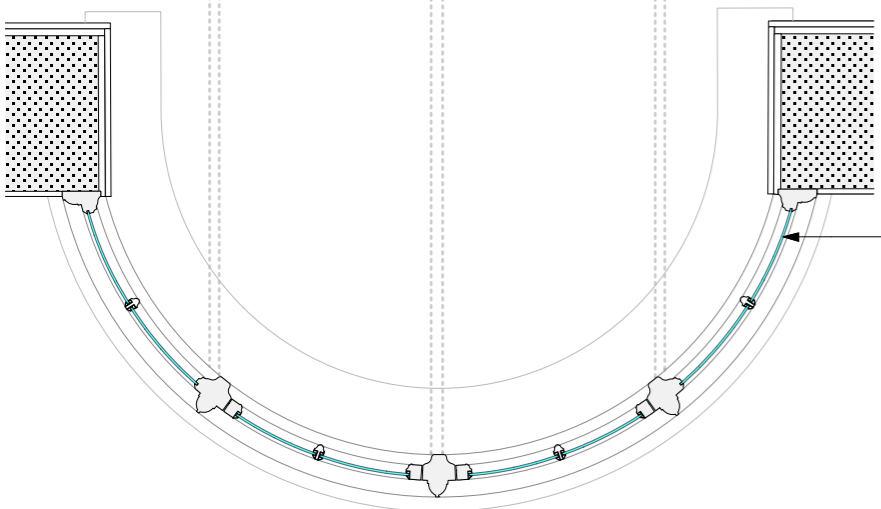


MAKE GOOD EXISTING
TIMBER CASEMENTS.

EXTERNAL ELEVATION OF PROPOSED
WINDOW TYPE 3.
1:20

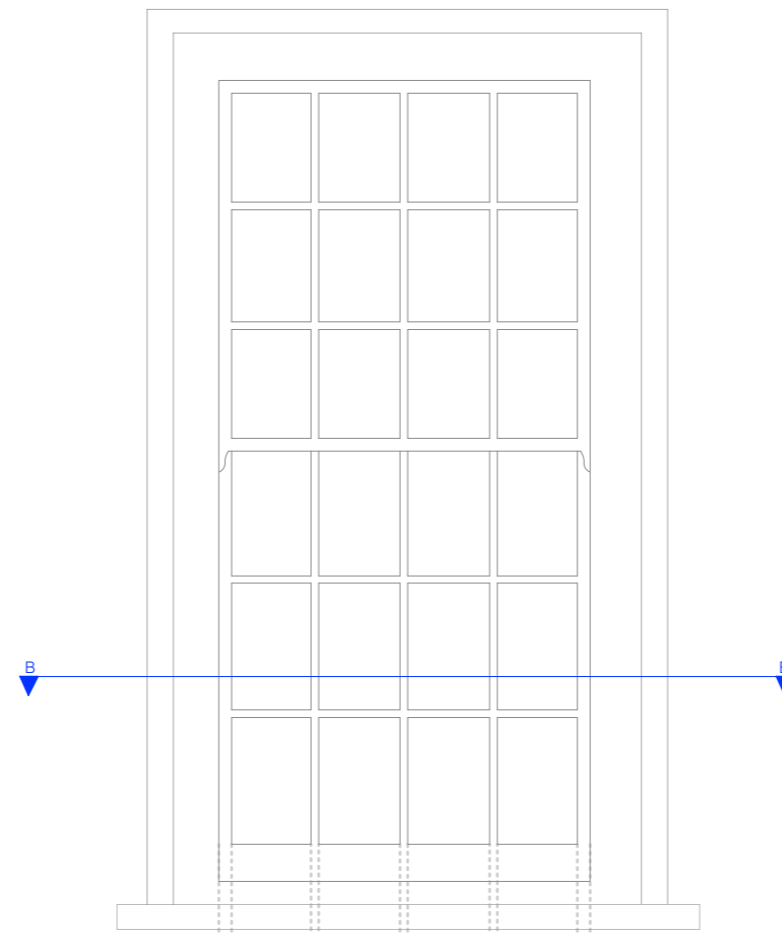


EXISTING SINGLE GLAZING
TO BE RETAINED +
REFURBISHED.

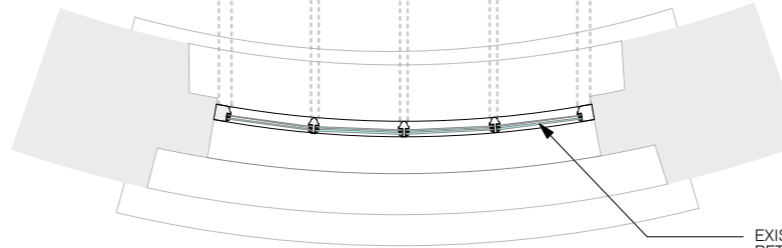
DETAIL SECTION PLAN A-A
THROUGH PROPOSED WINDOW
TYPE 3.
1:20

WINDOW: TYPE 3. (W04)(W05)

'MAKE GOOD' EXISTING CASEMENTS. OVERHAUL + RE-DECORATE WITH NEW IRON MONGERY APPLIED.



EXTERNAL ELEVATION OF PROPOSED
WINDOW TYPE 4.
1:20



EXISTING SASH WINDOWS
RETAINED + OVERHAULED.

DETAIL SECTION PLAN B-B
THROUGH PROPOSED WINDOW
TYPE 4.
1:20

WINDOW: TYPE 4. (W01)(W02)(W03)

'MAKE GOOD' EXISTING SASH WINDOWS. OVERHAUL + RE-DECORATE WITH
NEW IRON MONGERY APPLIED.



Charlton
Brown
Architects

Flat 8, Inverforth House, London

Proposed Window Details

1316 / SK 07 / R 01

The Belvedere 2 Back Lane Hampstead London NW3 1HL
T 020 7794 1234 E office@charltonbrown.com

Scale: 1:20 @A3
This drawing is copyright

Please follow the drawings exactly. If you find errors or omissions ask for clarification. Do not proceed without revised instructions. No dimensions to be scaled