

PROPOSED SECTION AA  
1:10 @ A3

**VELUX NOTES:**

Ensure that roof membrane application, size and number of overlaps and fixings are all in accordance with roofing manufacturers recommendations.

Hot welding is not permitted on the VELUX upstand or window. However, where hot welding is required around the upstand or window:

ensure that VELUX window and upstand are suitably protected to adjacent hot weld fixing

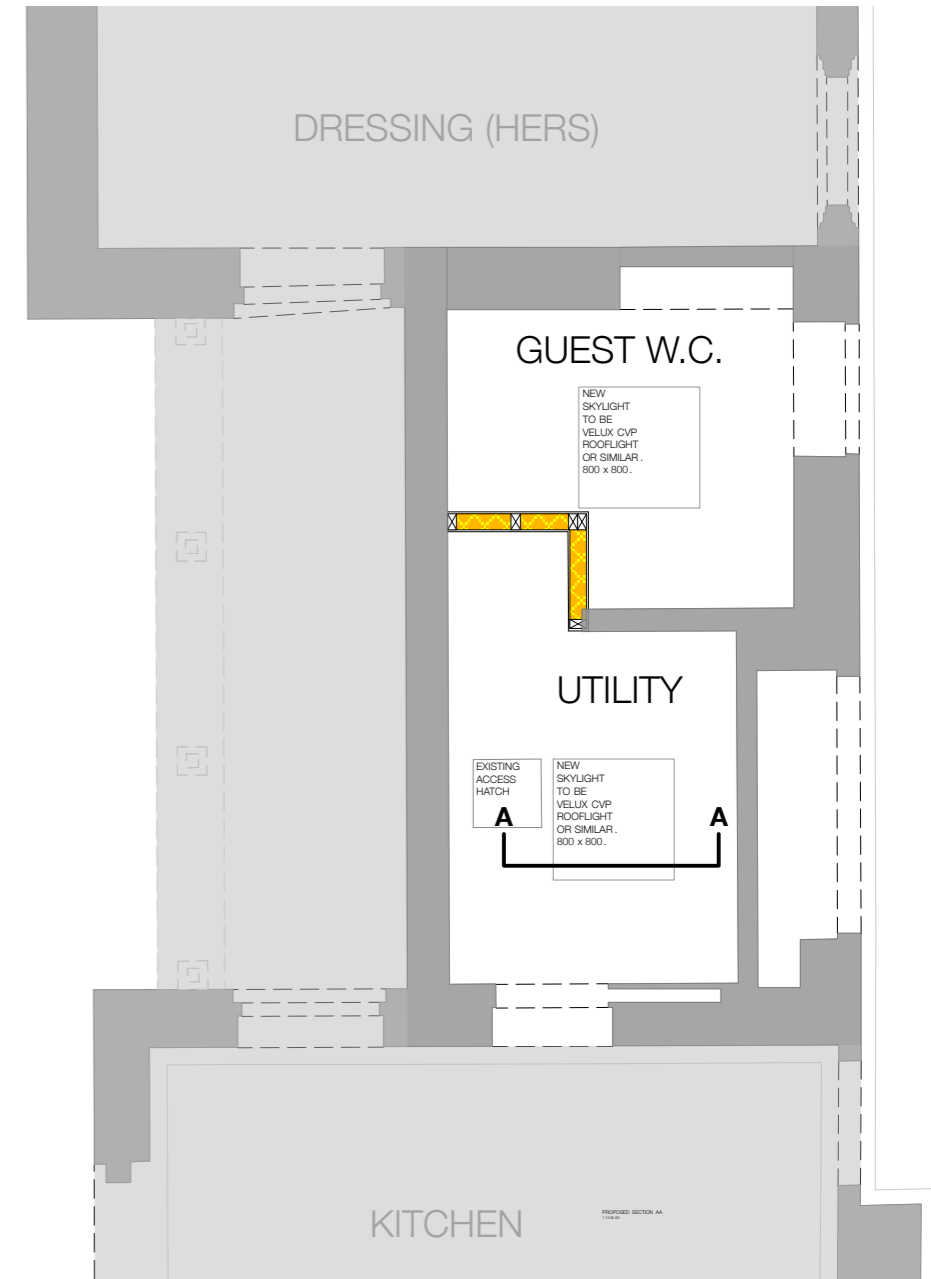
mechanically fix membrane to VELUX window using VELUX clip ref: ZZZ 210

fix cover membrane to VELUX upstand and window using approved adhesive

hot weld cover membrane to intermediate membrane but NOT to VELUX upstand or window

hot weld intermediate membrane to main roof covering

OPENING SIZES		
window code	external frame size F	structural opening S
060060	780 x 780mm	600 x 600mm
060090	780 x 1080mm	600 x 900mm
<b>080080</b>	<b>980 x 980mm</b>	<b>800 x 800mm</b>
090090	1080 x 1080mm	900 x 900mm
100100	1180 x 1180mm	1000 x 1000mm
090120	1080 x 1380mm	900 x 1200mm
120120	1380 x 1380mm	1200 x 1200mm
100150	1180 x 1680mm	1000 x 1500mm
150150	1680 x 1680mm	1500 x 1500mm



PROPOSED PARTIAL REFLECTED CEILING PLAN  
1:50 @ A3



Charlton  
Brown  
Architects

Flat 8, Inverforth House, London

Proposed Roof Light Details

1316 / SK 21

The Belvedere 2 Back Lane Hampstead London NW3 1HL  
T 020 7794 1234 E office@charltonbrown.com

Scale: 1:10@A3  
This drawing is copyright

Please follow the drawings exactly. If you find errors or omissions ask for clarification. Do not proceed without revised instructions. No dimensions to be scaled