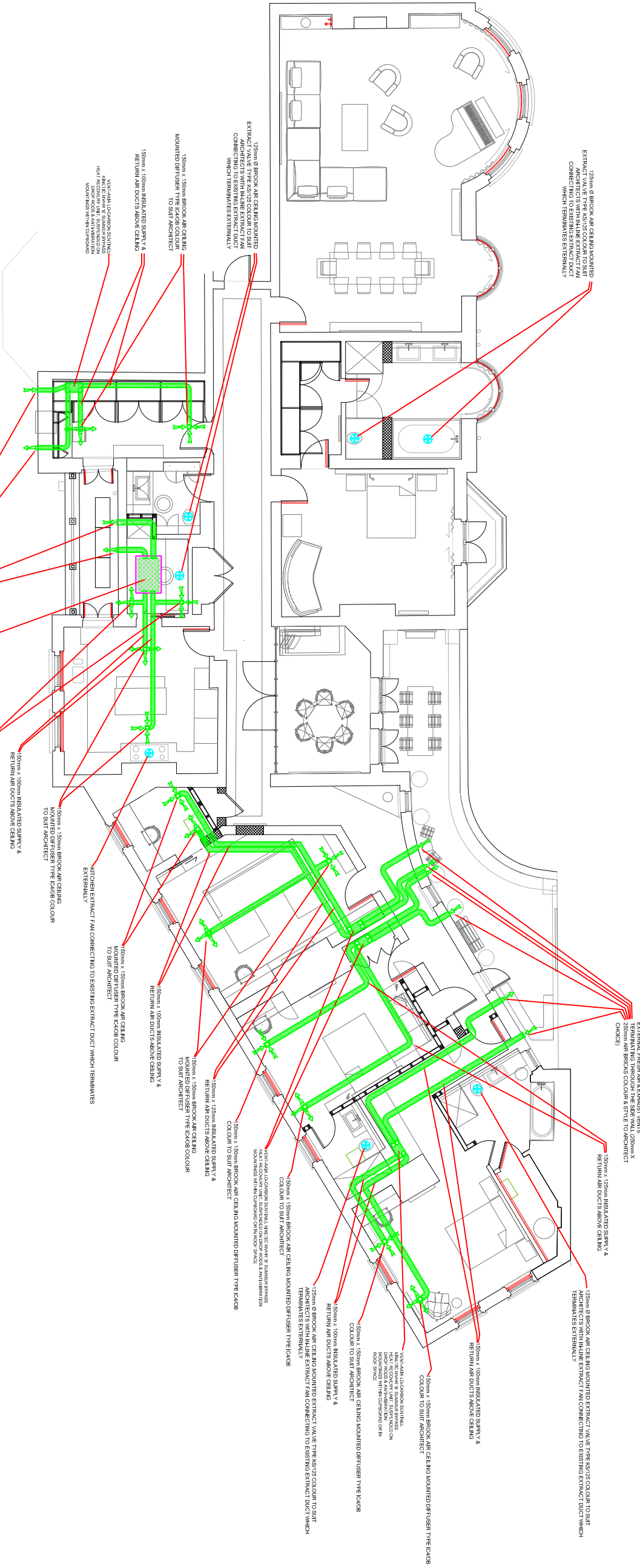


PROVISIONAL ISSUE

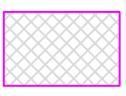
- NOTES:
1. A/C CONTROLLERS TO BE HIDDEN WITHIN CUPBOARDS WITH REMOTE AIR TEMPERATURE SENSORS IN RETURN AIR DUCTS IN EACH ROOM.
 2. ALL SERVICES PASSING THROUGH THE EXTERNAL WALLS SHALL BE FULLY WATERPROOFED IN ACCORDANCE WITH THE ARCHITECT & STRUCTURAL ENGINEERS DETAILS.
 3. THE EX/INT (MAKER BOXES) TO BE ADJACENT TO THE A/C UNITS FOR EASE OF MAINTENANCE.
 4. THE CONDENSATE DRAINS SHALL EITHER BE GRAVITY OR PUMPED TO THE NEAREST RAMP OR SWP VIA A DRY SEAL, TRAP OR DISCHARGE DIRECTLY OUTSIDE ON TO BALCONY.
 5. WHERE REFRIGERATION LINES PASS THROUGH BEAM THEY SHOULD BE 250mm ϕ IN ACCORDANCE WITH STRUCTURAL REQUIREMENTS.



125mm Ø BROOK AIR CEILING MOUNTED EXTRACT VALVE TYPE KS/125 COLOUR TO SUIT ARCHITECT



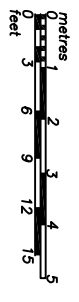
150mm x 150mm BROOK AIR CEILING MOUNTED DIFFUSER TYPE IC4/08 COLOUR TO SUIT ARCHITECT



ACCESS PANEL



REMOTE CEILING OR WALL MOUNTED EXTRACT FAN



- GENERAL NOTES:
1. THIS DRAWING IS COPYRIGHT OF BARRY GRIFFIN ASSOCIATES.
 2. DO NOT SCALE FROM THIS DRAWING.
 3. THE CONTRACTOR IS TO VERIFY ALL DIMENSIONS ON SITE BEFORE COMMENCING WORK. ALL ERRORS AND OMISSIONS ARE TO BE REPORTED TO THE ENGINEER.
 4. THIS DRAWING IS TO BE READ IN CONJUNCTION WITH ALL RELEVANT ARCHITECT'S STRUCTURE ENGINEERS AND MECHANICAL ENGINEERS' DRAWINGS AND SPECIFICATIONS.

Job: FLAT 8 INVERFORTH HOUSE
title: VENTILATION SYSTEM OUTLINE & INDICATIVE LAYOUT
Drawn: BG
Date: JUNE 2016
Scale: 1:100 @ A2
Checked:

Barry Griffin Associates
 Building Services and Public Health Consultants
 Telephone 020 8866 7685
 Fax 020 8866 7685
 Drg. No. 756/M/02