

**Ref: 11/17802
August 2016**

Basement Impact Assessment (Hydrogeological and Structural)

At

Ornan Court, 2 Ornan Road, London, NW3 4PT

For

Ornan Court Limited

VOLUME 6 of 8

CONTENTS

1. Volume 1

- 1.1 Basement Impact Assessment
- 1.2 Exploratory Hole Records

2. Volume 2

- 2.1 Responses from LUL, Network Rail & Cross Rail

3. Volume 3

- 3.1 Ground Movement Assessment Report (Part 1)

4. Volume 4

- 4.1 Ground Movement Assessment Report (Part 2)

5. Volume 5

- 5.1 Soil Report
- 5.2 Tree Survey & Arboricultural Method Statement
- 5.3 Party Wall Award

6. Volume 6

- 6.1 Architectural Drawings
- 6.2 Structural Drawings (Part 1)

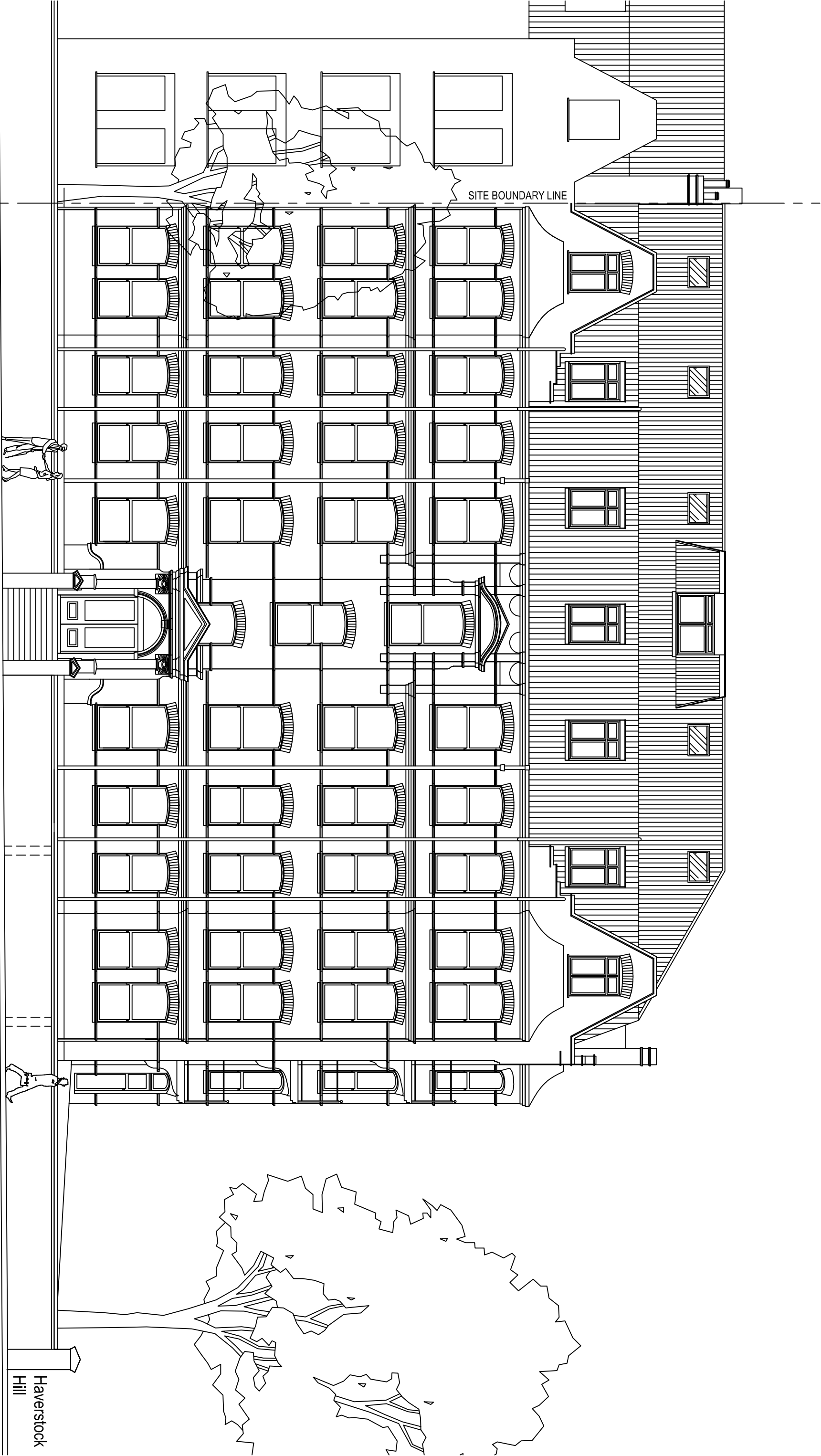
7. Volume 7

- 7.1 Structural Drawings (Part 2)

8. Volume 8

- 8.1 Structural Calculations

6.1 Architectural Drawings



Existing Front Elevation
Scale 1:100 @ A3


Issued For
PROGRESS
General Notes: THIS DRAWING HAS BEEN PREPARED BY DS DESIGN SOLUTIONS AND THE DATA CONTAINED HEREIN MAY BE USED OR REPRODUCED ONLY WITH DS DESIGN SOLUTIONS' APPROVAL.

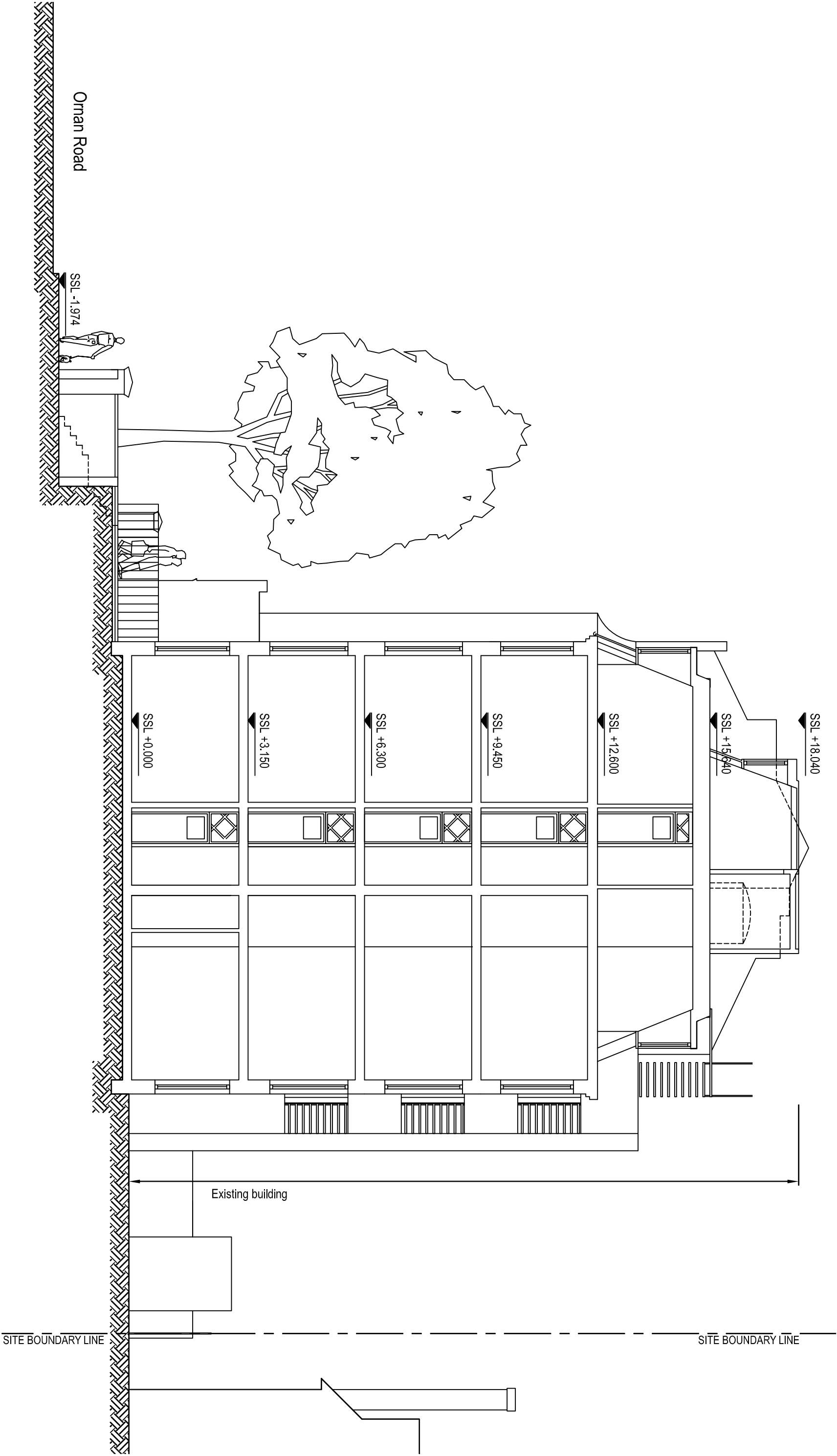
Rev.	Description	Date	Signed	Checked

--

--

Scale	Date	Drawn by	Checked by
1:100 @ A3	16.10.2015	AL	DS
Drawing Title	Existing Front Elevation		
Project	Orman Court, 2 Orman Road Hampstead, London NW3 4PT		

	561 Finchley Road London NW3 4J		
	Phone 020 7 4 3 3 3 9 Fax 020 7 7 9 4 4 2 7 9 www.DesignSolutionsUK.com		
Project no.	15/0159	Drawing no.	010
Revision	00		



Existing Section AA
Scale 1:100 @ A3

Issued For

PROGRESS

General Notes:
THIS DRAWING HAS BEEN PREPARED BY DS DESIGN SOLUTIONS AND THE DATA CONTAINED HEREIN MAY BE USED OR REPRODUCED ONLY WITH DS DESIGN SOLUTIONS' APPROVAL.

Rev.	Description	Date	Signed	Checked

Scale	Date	Drawn by	Checked by
1:100 @ A3	16.10.2015	AL	DS
Drawing Title			
Existing Section A-A			
Project			
Ornan Court, 2 Ornan Road Hampstead, London NW3 4PT			

Project no.

15/0159

Drawing no.

020

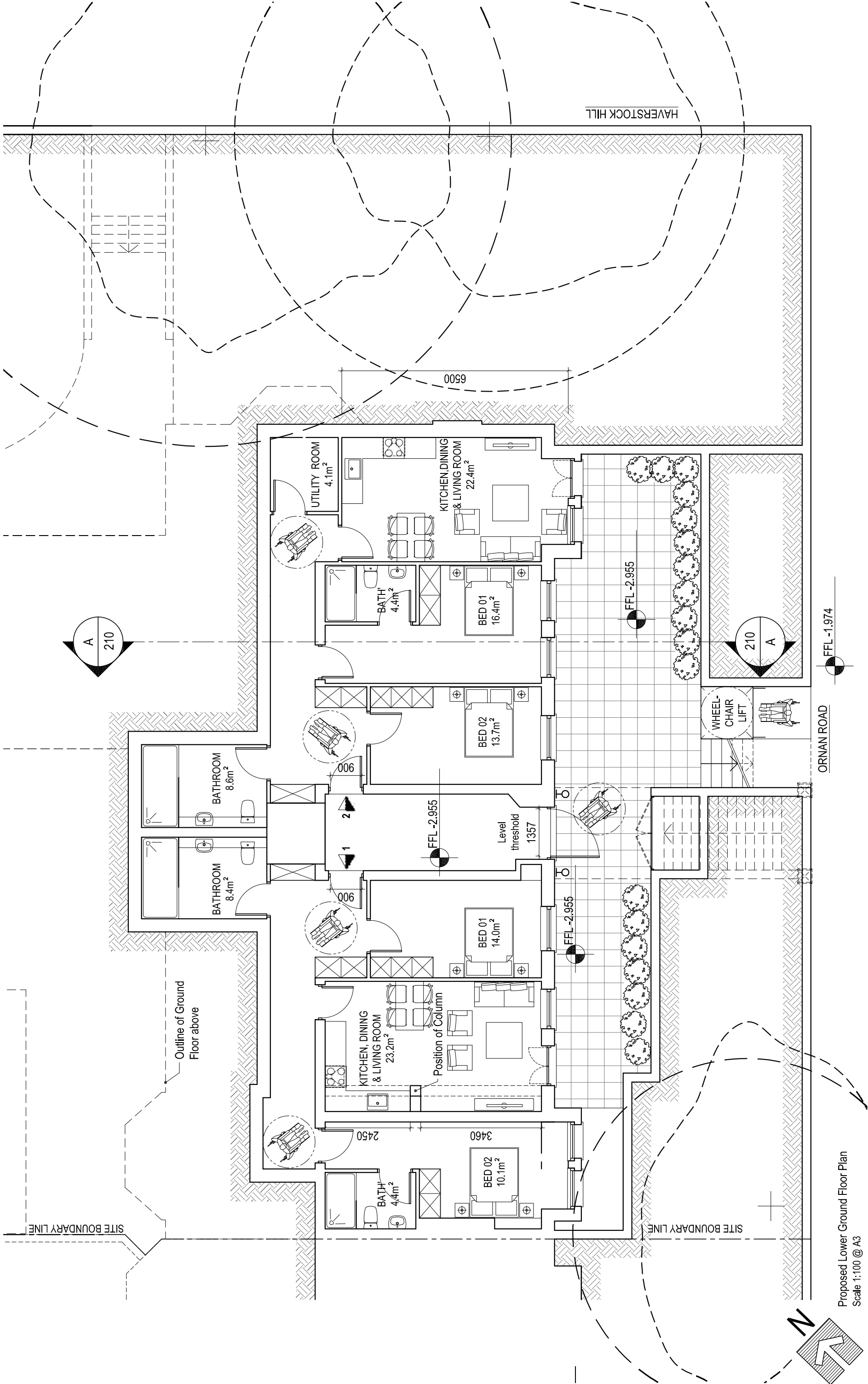
Revision

00

DS design solutions

561 Finchley Road
London NW3 7 4 3 3 7 7 9 4
Phone 020 3 9 3 9 020
Fax 020 4 2 7 9

www.DesignSolutionsUK.com



Issued For

General Notes:

THIS DRAWING HAS BEEN PREPARED BY DS DESIGN SOLUTIONS AND THE DATA CONTAINED HEREIN MAY BE USED OR REPRODUCED ONLY WITH DS DESIGN SOLUTIONS' APPROVAL.

Rev.	Description	Date	Signed	Checked

General Notes:

New Windows and Doors to front elevation at Lower Ground Floor have been shown aligned with the Windows at the Ground Floor level.

- Gross Internal Areas -		
Flat 1	83.7m ²	
Flat 2	88.1m ²	

Scale	Date	Drawn by	Checked by
1:100 @ A3	16.10.2015	AL	DS
Drawing Title			
Proposed Lower Ground Floor Plan			
Project			
Ornan Court, 2 Ornan Road Hampstead, London NW3 4PT			
Project no.	Drawing no.	Revision	
15/0159	101	03	

561 Finchley Road
London NW3 7BJ
Phone 020 7433 3939
Fax 020 7794 4279
www.DesignSolutionsUK.com

design solutions

DS

design solutions

Project no.

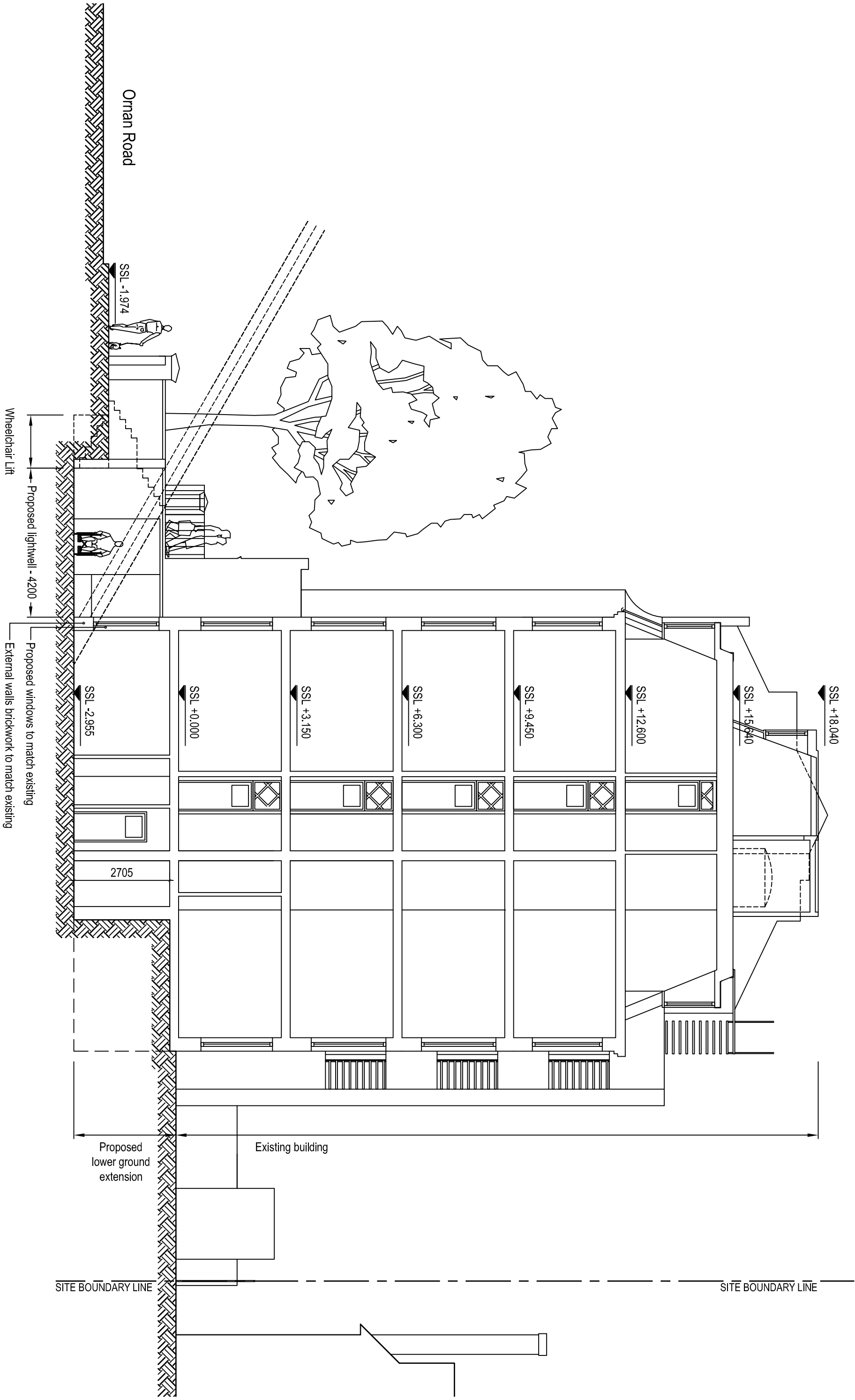
Drawing no.

Revision

15/0159

101

03



Issued For

PROGRESS

General Notes:
THIS DRAWING HAS BEEN PREPARED BY DS DESIGN SOLUTIONS AND THE DATA CONTAINED HEREIN MAY BE USED OR REPRODUCED ONLY WITH DS DESIGN SOLUTIONS' APPROVAL.

Rev.	Description	Date	Signed	Checked

Scale	Date	Drawn by	Checked by
1:100 @ A3	16.10.2015	AL	DS
Drawing Title			
Proposed Section A-A			
Project			
Orman Court, 2 Orman Road Hampstead, London NW3 4PT			

Project no.

15/0159

Drawing no.

120

Revision

01

DS design solutions

561 Finchley Road
London NW3 7J
Phone 020 7 4 3 3 3 9
Fax 020 7 7 9 4 4 2 7 9
www.DesignSolutionsUK.com



Proposed Front Elevation
Scale 1:100 @ A3

Issued For

General Notes:

THIS DRAWING HAS BEEN PREPARED BY DS DESIGN SOLUTIONS AND THE DATA CONTAINED HEREIN MAY BE USED OR REPRODUCED ONLY WITH DS DESIGN SOLUTIONS' APPROVAL.

PROGRESS

Rev.	Description	Date	Signed	Checked

Scale	Date	Drawn by	Checked by
1:100 @ A3	16.10.2015	AL	DS
Drawing Title			
Proposed Front Elevation			
Project			
Orman Court, 2 Orman Road Hampstead, London NW3 4PT			

Project no.

15/0159

Drawing no.

110

Revision

01

561 Finchley Road
London NW3 7J

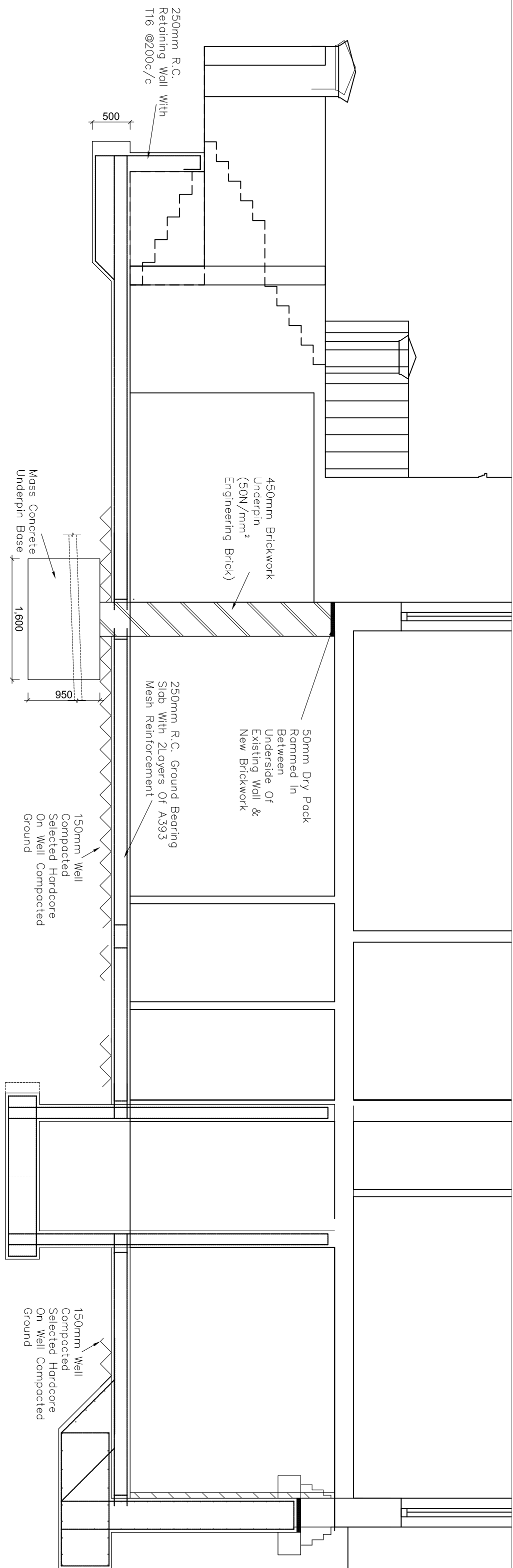
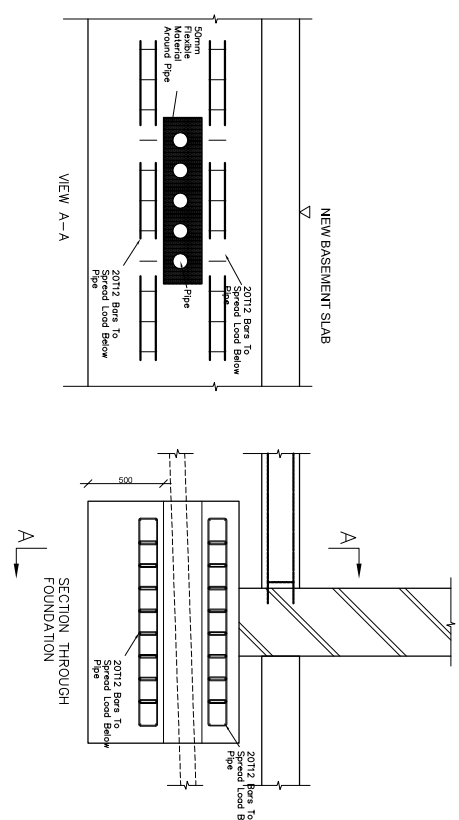
Phone 020 7 4 3 3 020

Fax 020 7 7 9 4 4 2 7 9

www.DesignSolutionsUK.com

6.2 Structural Drawings (Part 1)

**Section A-A
(Basement)**



- Orman

Title: **Section A-A (Basement)
and Section B-B**

Object	Object	Description

MURRAY NEUSTON ASSOCIATES
Consulting Civil & Structural Engineers

6 Hole Lane, London NW7 3NX
Tel: 020-8959 1666 Fax: 020-8906 8503

Date: 28.04.2016
 Eng: GO
 Job No: 16.280

Project: **Orman Court, Belsize Park,**