

General notes:
 This drawing is copyright of KSR architects. This drawing must be read in conjunction with the Designer's Risk Assessment, specification and all other relevant documentation and drawings. KSR architects accept no liability for any expense, loss or damage of whatsoever nature and however arising from any variation made to this drawing or in the execution of the work to which it relates which has not been referred to them and their approval obtained.
 Do not scale from this drawing or the digital data, only figured dimensions are to be used. For Planning refer to linear scale. Check all dimensions on site prior to carrying out any works - advise of any discrepancy.

Notes/Legends

E Tender 2	08 July 16	SAS
D For Tender	02 June 16	SAS
C Draft Tender	21 May 16	SAS
B Draft Stage 3.1	01 April 16	JR
A Stage 3	02 Mar 16	SAS

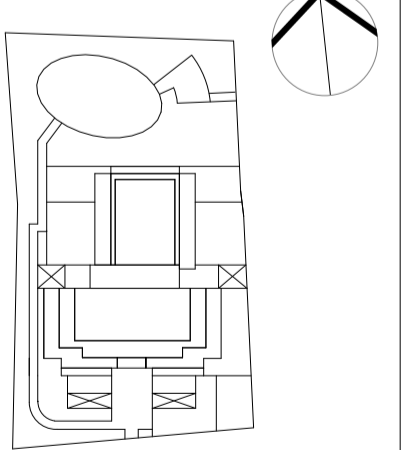
Rev	Description	Date	Chd

© KSR architects

Stamp

TENDER

Key Plan



KSRARCHITECTS
 KSR Architects LLP
 14 Overland Street
 London NW1 0ND
 mail@ksrarchitects.com
 t +44 (0)20 7692 5000
 www.ksrarchitects.com

Project:
29 NEW END

Title:
Location Plan

Date: Feb 2016	Drawn By: AO	Checked: SAS
----------------	--------------	--------------

Scale: 1:200 @ A1	Status: Information
-------------------	---------------------

Project Ref	Drawing No	Reason
15031	15031-0-001	E