
Union Bar

Terrace Design Mood Boards

10.11.16

L16 3747 • Regents Place • Rev G

DESIGNLSM

Branding
Architecture
Interior design

t +44 (0)1273 820 033
e hello@designlsm.com
w www.designlsm.com

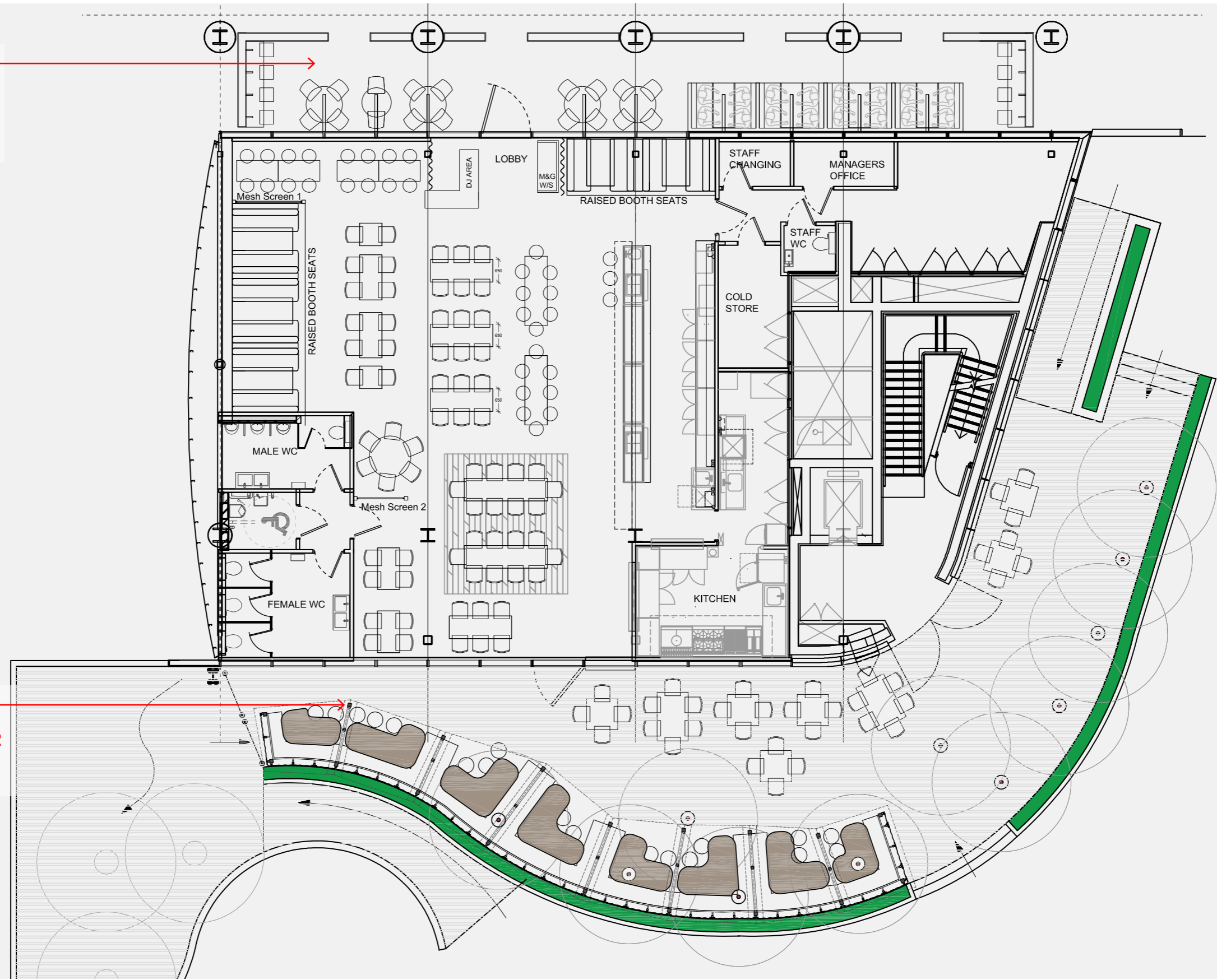
Existing Exterior Terraces



Overall Plan

FRONT TERRACE

Refer to page number 4
for front terrace in more
detail

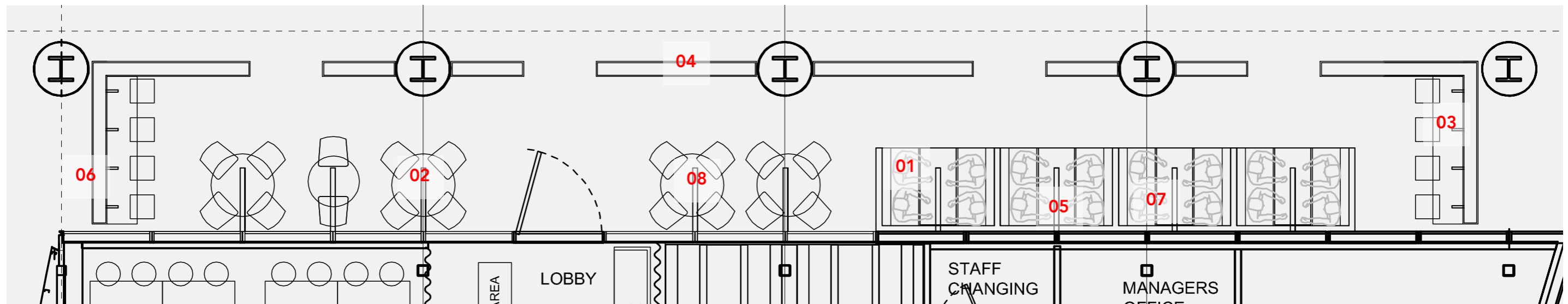


REAR TERRACE

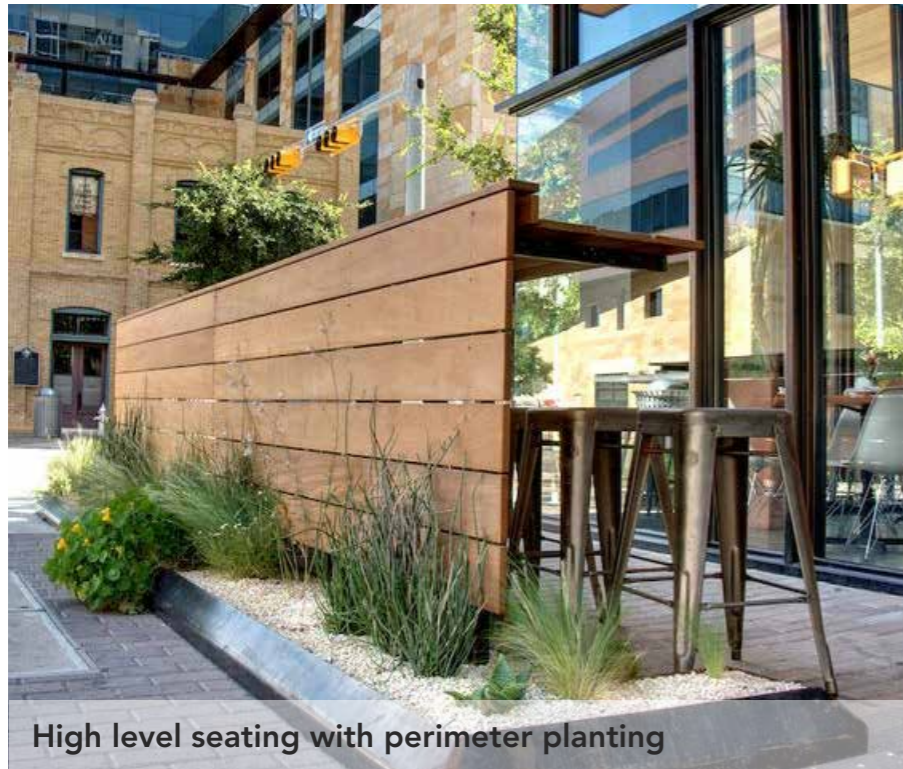
Refer to page number 12
for rear terrace in more
detail

Enlarged Front Terrace plan

- 01 Fixed booth seating
- 02 Loose seating
- 03 High level seating
- 04 Powder coated steel planters
- 05 Lighting arms fixed behind existing cladding
- 06 Lighting fixed to high level tables
- 07 Seat pads and scatter cushions to booth seating
- 08 Free standing lighting arms



Mood board - Front Terrace



High level seating with perimeter planting



Comfortable horseshoe shaped seating



Arm lights fixed to high level table



Lighting arms to suspend pendant from



Pendant Light 01



Pendant Light 02

Mood board - Front Terrace furniture



Timber table tops and colourful metal chairs



Mixture of seating types



Different styles of chairs



Hill Cross Nolita Bar stool to front terrace

- 2 Red
- 2 Olive Green
- 2 Light Grey
- 2 Cream



Hill Cross Nolita Chair to front and rear terrace:

- 7 Red
- 7 Olive Green
- 6 Light Grey
- 6 Cream



Hill Cross Kaspar Side Chair to front and rear terrace:

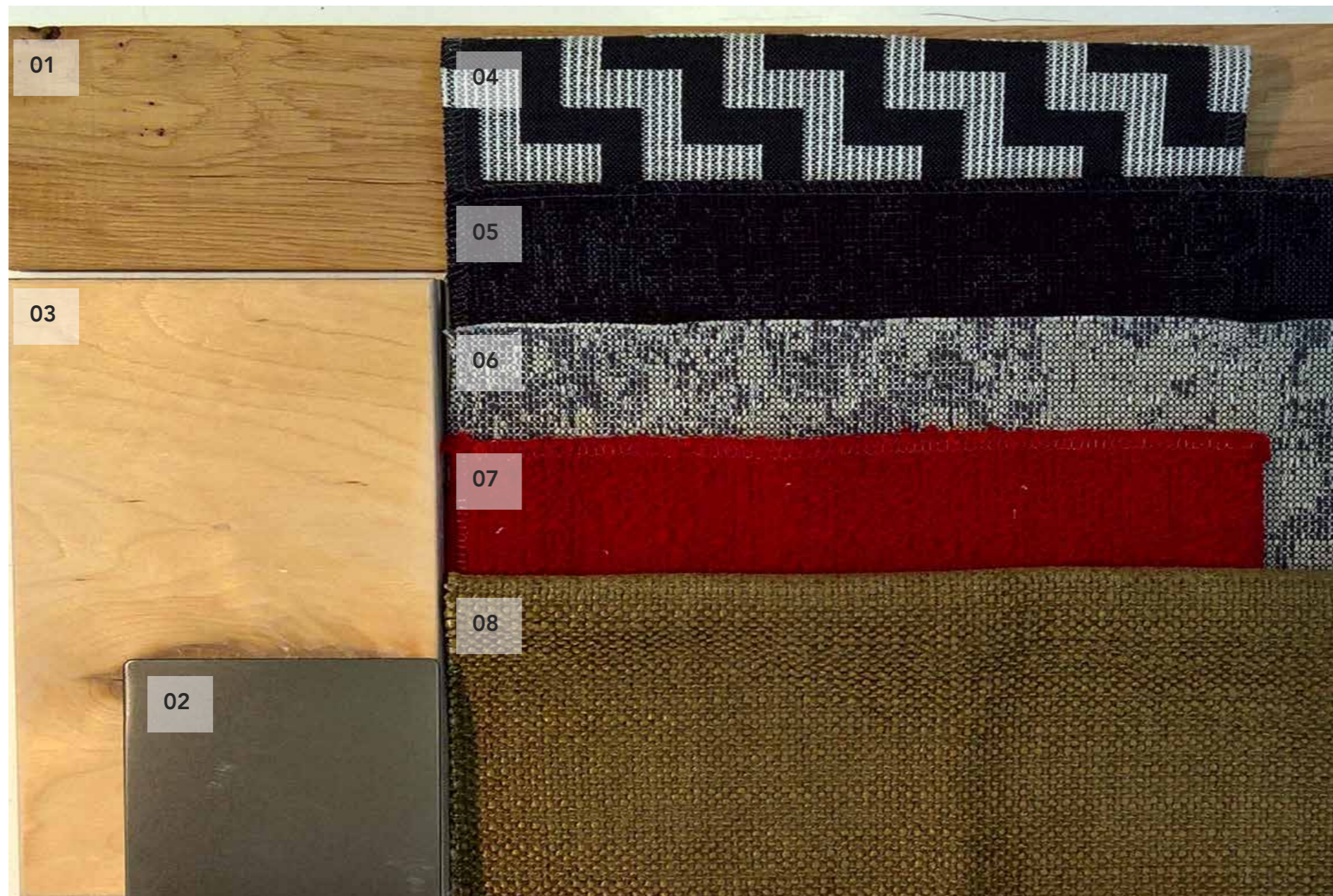
- 7 Red
- 7 Olive Green
- 6 Light Grey
- 6 Cream



Hill Cross black steel table base with timber top to front and rear terrace:

- 2 Rectangular
- 6 Square
- 4 Round Large
- 1 Round Small

Mood board - Front Terrace - Material Board



Material Key:

01 - Natural oak timber
benching to fixed seating

02 - Black steel framing to
fixed bench booth seating,
tables and lighting arms

03 - Plywood table top

04 - Cushion fabric: Svens-
son - Etage

05 - Cushion fabric: Kvadrat
- Memory 2 193

06 - Cushion fabric: Kvadrat
- Memory 2 156

07 - Cushion fabric: Bute
Fabrics - Tiree CF650 (co-
lour 4651)

08 - Cushion fabric: Sekers -
TDWI/SA undra Willow

Mood board - Front Terrace - Visuals



Mood board - Front Terrace - Visuals



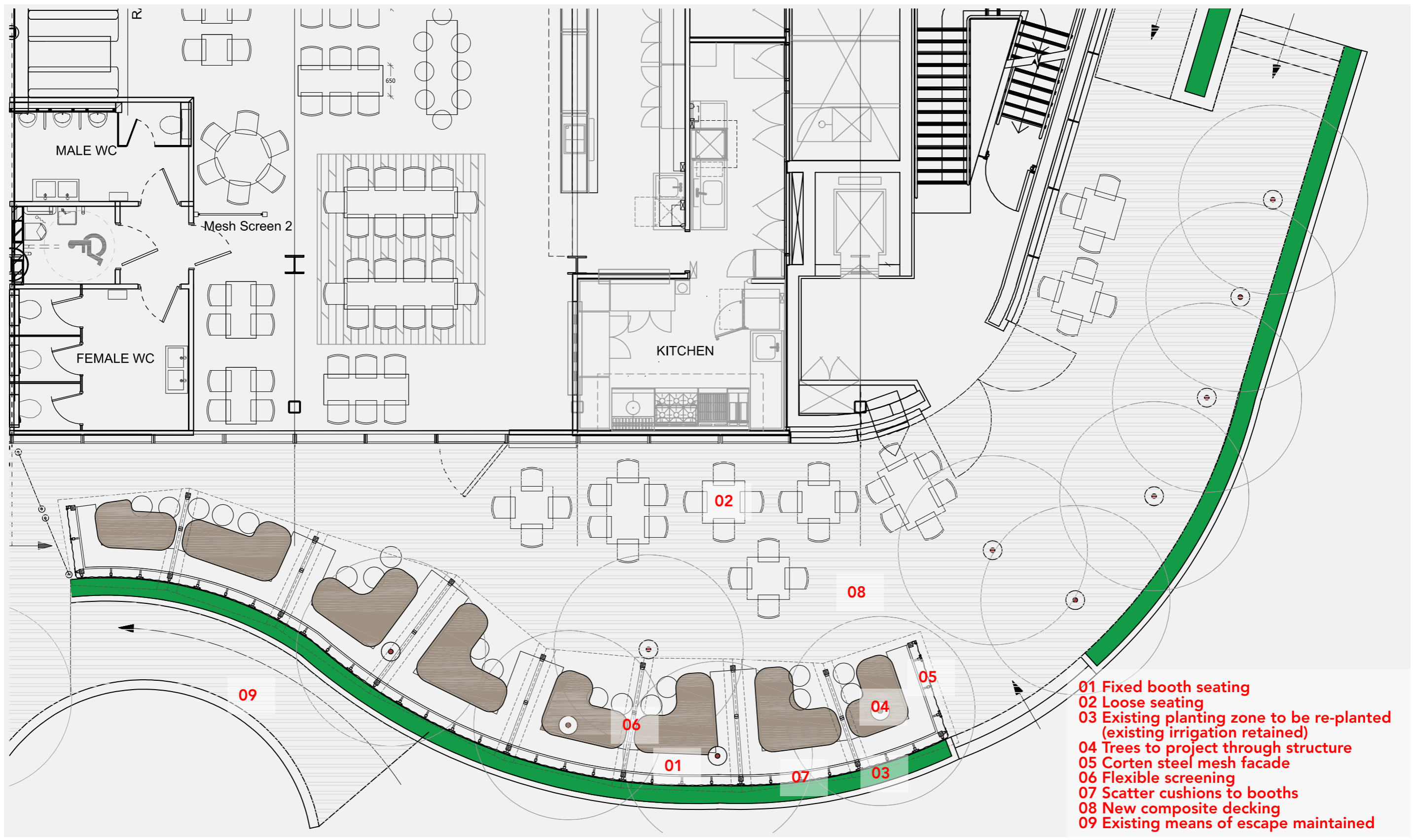
Mood board - Front Terrace - Visuals



Mood board - Front Terrace - Visuals



Enlarged Rear Terrace Plan

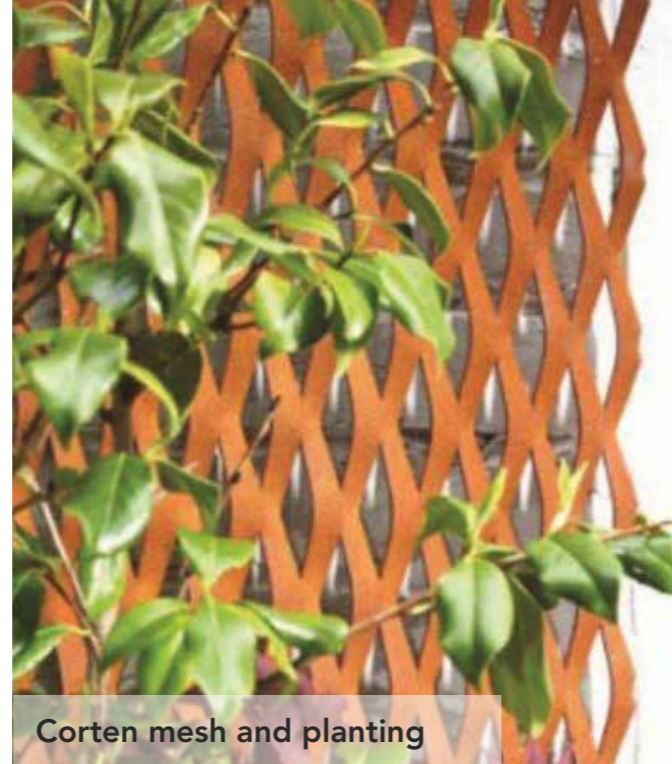


- 01 Fixed booth seating
- 02 Loose seating
- 03 Existing planting zone to be re-planted (existing irrigation retained)
- 04 Trees to project through structure
- 05 Corten steel mesh facade
- 06 Flexible screening
- 07 Scatter cushions to booths
- 08 New composite decking
- 09 Existing means of escape maintained

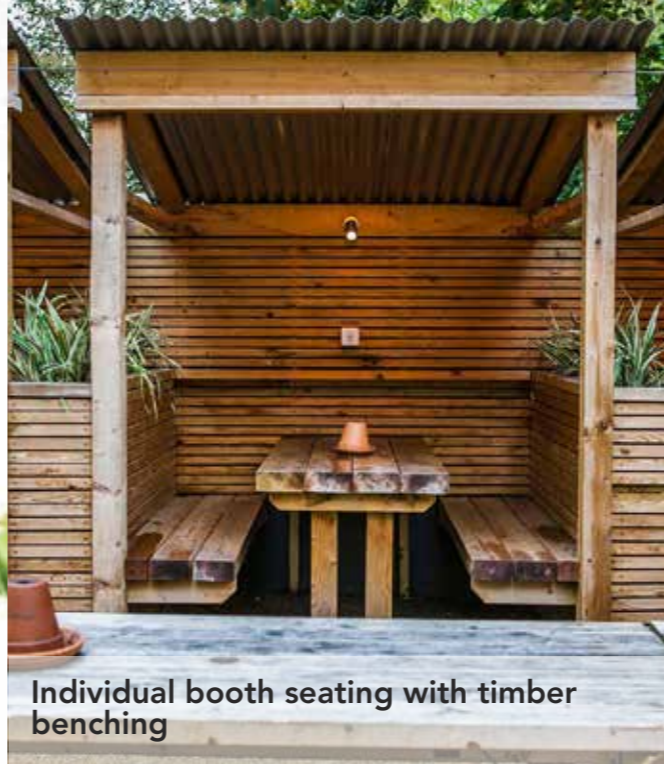
Mood board - Rear Terrace



Corten mesh skin



Corten mesh and planting



Individual booth seating with timber benching



Cushions to soften integrated seating



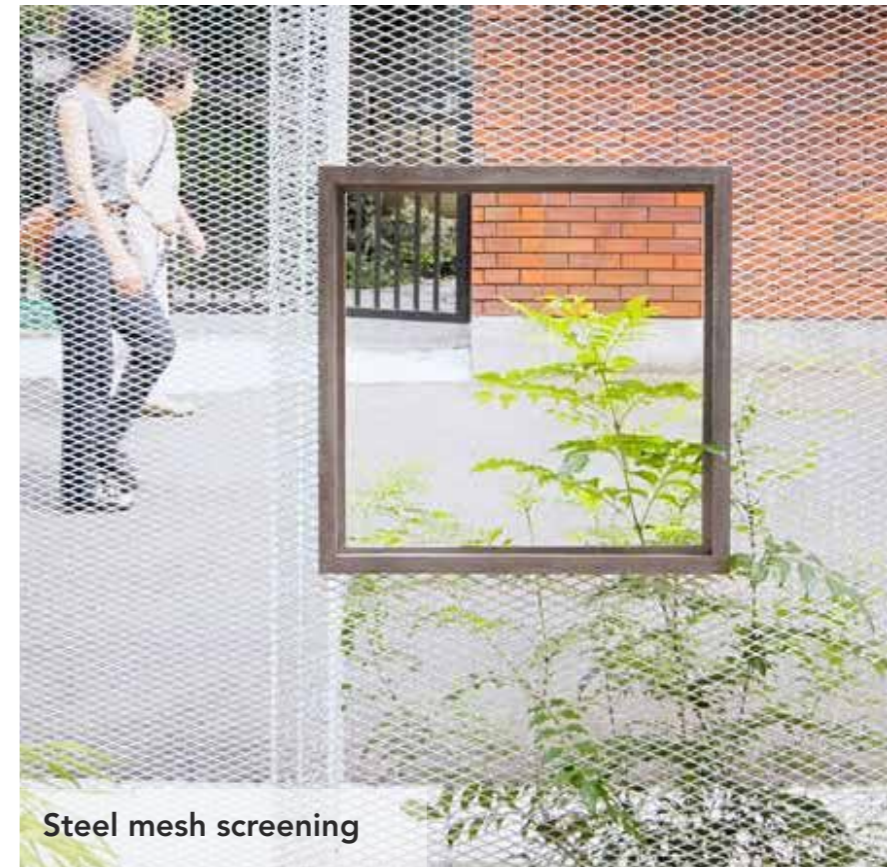
Vertical timber slat screening



Horizontal timber slat screening

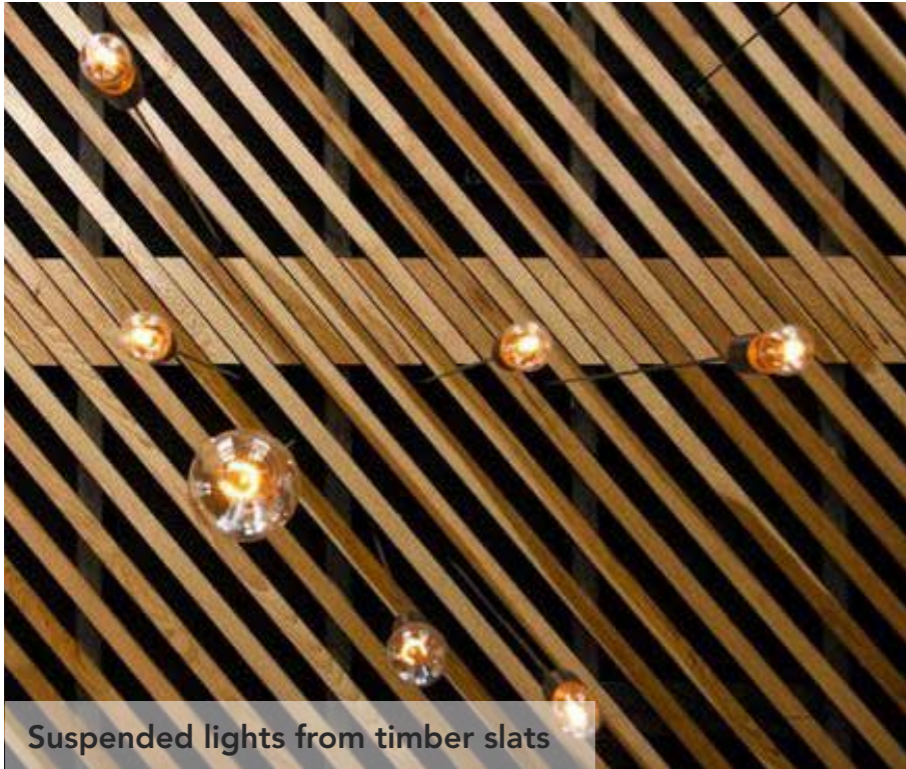


Polycarbonate screening



Steel mesh screening

Mood board - Rear Terrace - Lighting



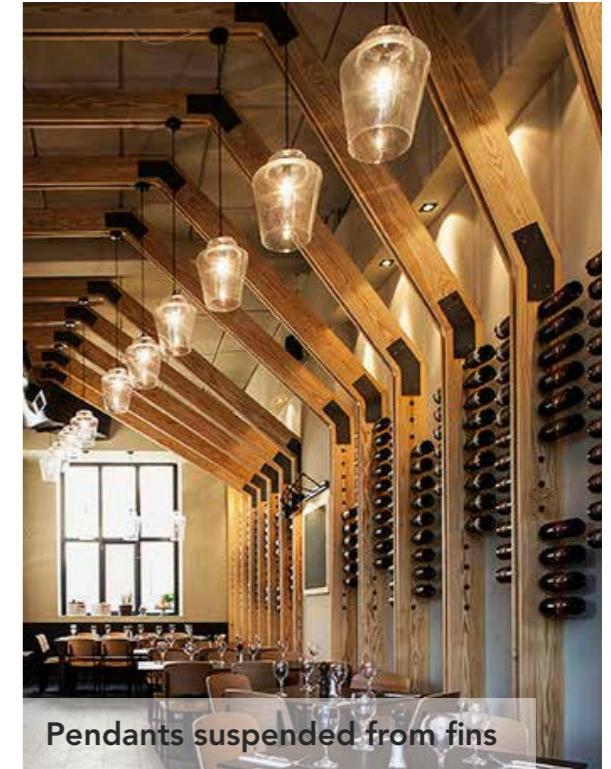
Suspended lights from timber slats



Pendant lights



Suspended pendants and green wall



Pendants suspended from fins



Feature pendants



Pendant Light 01



Pendant Light 02



Pendant Light 03

Mood board - Rear Terrace furniture and furniture incorporating existing trees



Timber table tops and colourful metal chairs



Mixture of seating types



Different styles of chairs



Creating intimate seating areas



Furniture integrating existing trees



Hill Cross Nolita Chair to front and rear terrace:

- 7 Red
- 7 Olive Green
- 6 Light Grey
- 6 Cream



Hill Cross Kaspar Side Chair to front and rear terrace:

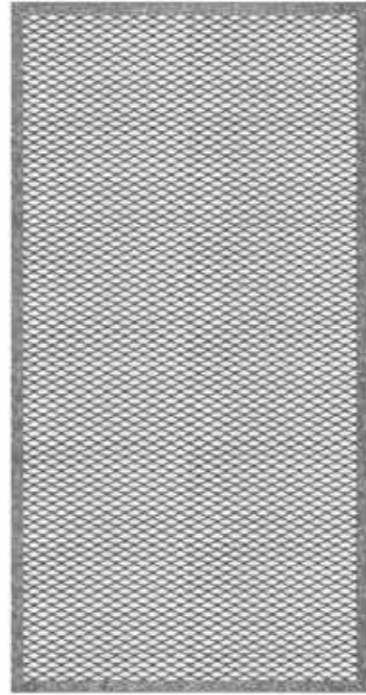
- 7 Red
- 7 Olive Green
- 6 Light Grey
- 6 Cream



Hill Cross black steel table base with timber top to front and rear terrace:

- 2 Rectangular
- 6 Square
- 4 Round Large
- 1 Round Small

Mood board - Rear Terrace - Framed Panel Materials and Roof Material



Galvanised steel frame and steel mesh



Galvanised steel frame and clear polycarbonate



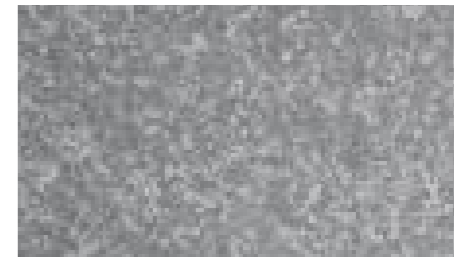
Galvanised steel frame and vertical timber slats



Galvanised steel frame and horizontal timber slats



Roof panel: Fibre cement cladding Pebble

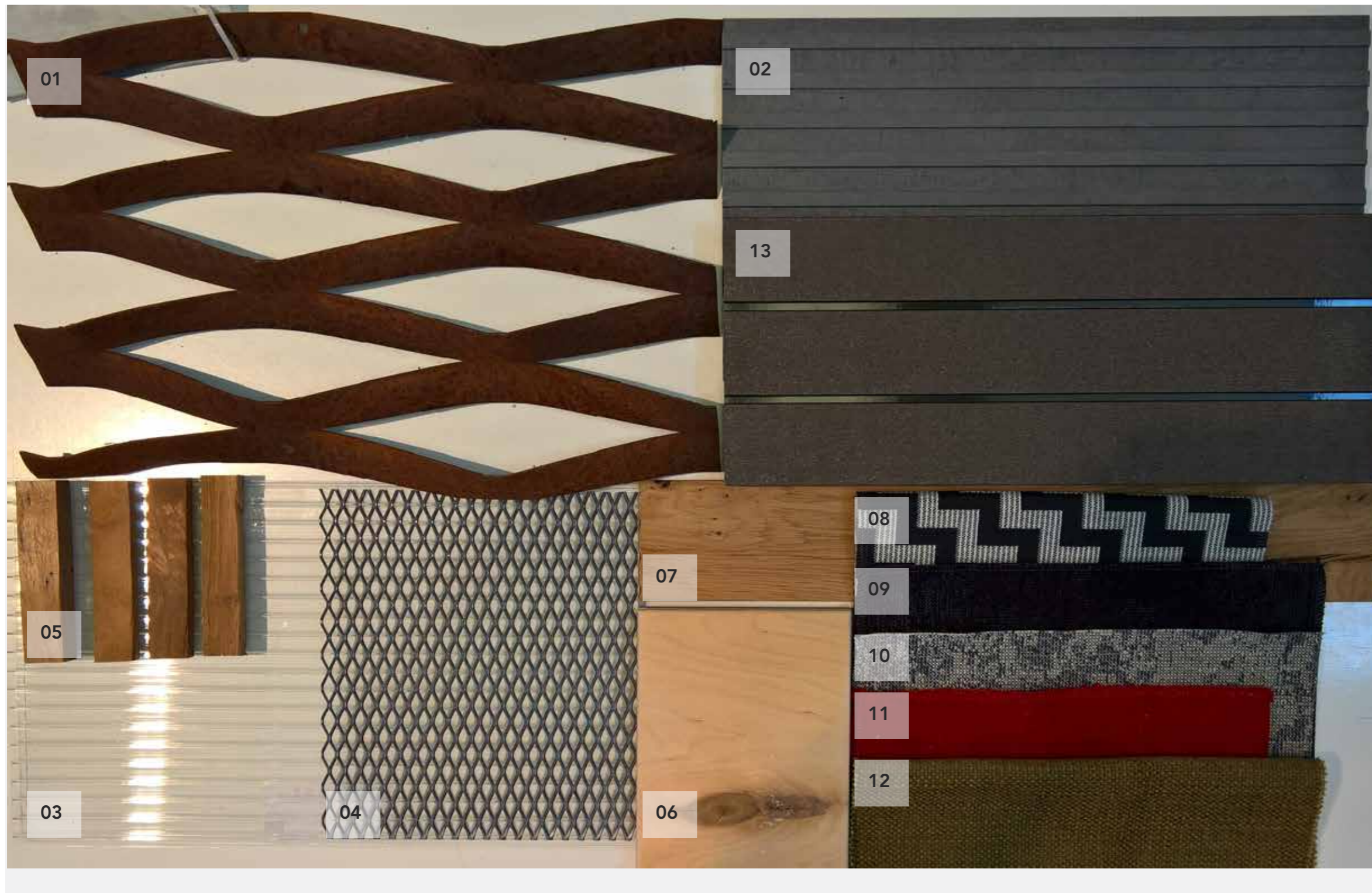


Roof edges: Galvanised steel

Three frame sizes for all 4 types of panels:

- 1280mm x 2150mm
- 980mm x 2150mm
- 680mm x 2150mm

Mood board - Rear Terrace - Material Board



Material Key:

- 01 - Corten finish expanded mesh
- 02 - Fibre cement facade material to the roof
- 03 - Polycarbonate panel
- 04 - Expanded mesh internal panel to be framed in galvanised steel.
- 05 - Timber slats to be framed in galvanised steel.
- 06 - Plywood table top
- 07 - Natural oak timber benching
- 08 - Cushion fabric: Svensson - Etage
- 09 - Cushion fabric: Kvadrat - Memory 2 193
- 10 - Cushion fabric: Kvadrat - Memory 2 156
- 11 - Cushion fabric: Bute Fabrics - Tiree CF650 (colour 4651)
- 12 - Cushion fabric: Sekers - TDWI/SA undra Willow
- 13 - Composite decking - terrafina Excek Grey-Brown Yacht Deck
- 14 - Galvanised steel framing (not on board)

Mood board - Rear Terrace - Visuals



Mood board - Rear Terrace - Visuals



Mood board - Rear Terrace - Visuals



Mood board - Rear Terrace - Visuals



Mood board - Rear Terrace - Visuals



Mood board - Rear Terrace - Visuals



Mood board - Rear Terrace - Visuals



Mood board - Rear Terrace - Visuals



Contact

Contact

Simon Spiteri
simon.s@designlsm.com
+44 (0) 1273 820 033
+44 (0) 7580 036 165

DesignLSM Limited
58 Livingstone Road
Hove East Sussex
BN3 3WL

DESIGNLSM

Branding
Architecture
Interior design

t +44 (0)1273 820 033
e hello@designlsm.com
w www.designlsm.com
