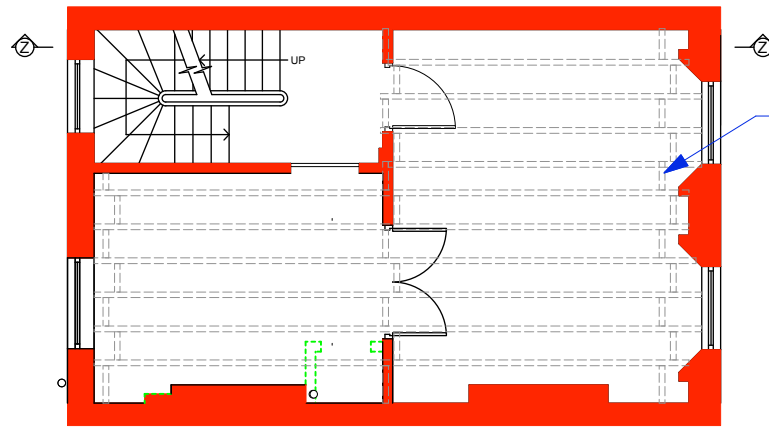
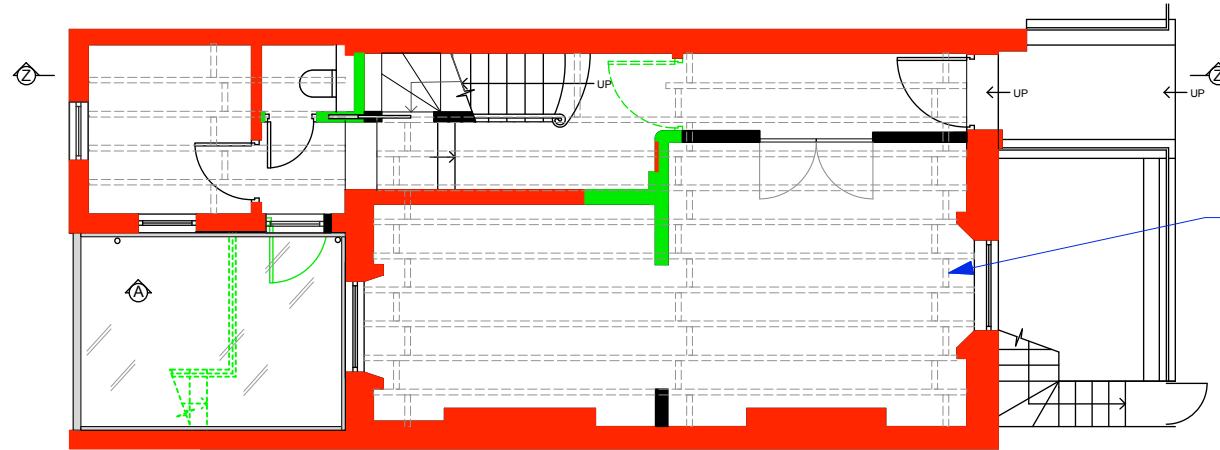


1 FIRST FLOOR RCP
Scale: 1:100



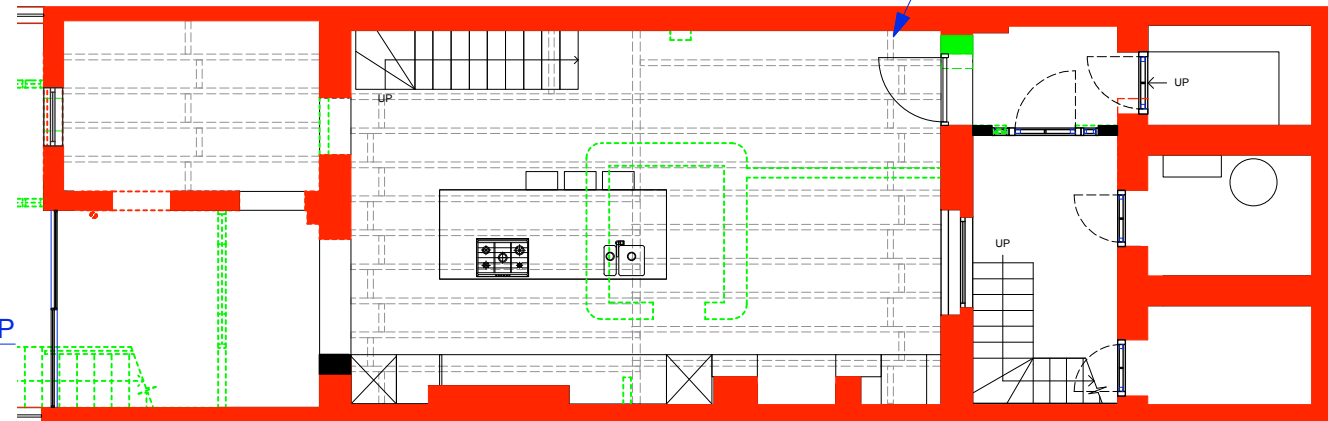
Add new solid timber block strutting at bearing ends and at mid span. Set 25mm below from top of joist to allow for services, pipes, etc

2 GROUND FLOOR RCP
Scale: 1:100



Add new solid timber block strutting at bearing ends and at mid span. Set 25mm below from top of joist to allow for services, pipes, etc

3 LOWER GROUND RCP
Scale: 1:100



Add new solid timber block strutting at bearing ends and at mid span. Set 25mm below from top of joist to allow for services, pipes, etc

ISSUE: DATE: COMMENT:
- OCT 16 Issue for planning and listed building consent

CallenderHoworth		Morelands 5-23 Old Street London EC1V 9HL		T: 020 7336 8560 F: 020 7549 2152 W: www.callenderhoworth.com	
Job no.	Job title				
1198	4 OVAL ROAD				
Drawing no.	Drawing title				
122.03	PROPOSED NOGGIN				
Scale	Size	Drawn	Revision		
1:100	A3	ML	-		

All works to be in accordance with relevant standards, British building codes, and other relevant codes, and with manufacturers recommendations and instructions. All dimensions to be checked on site. Do not scale from this drawing.