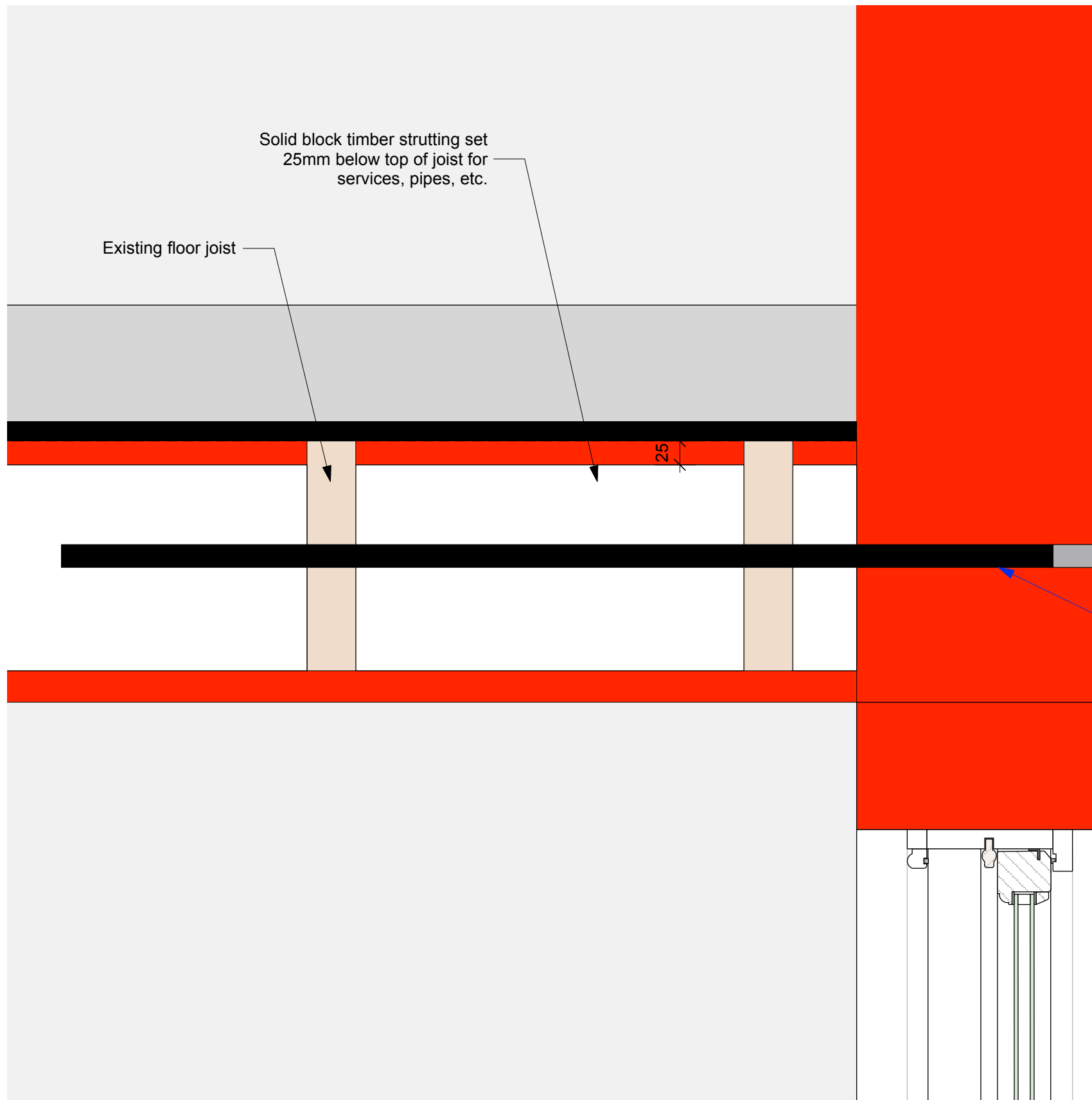


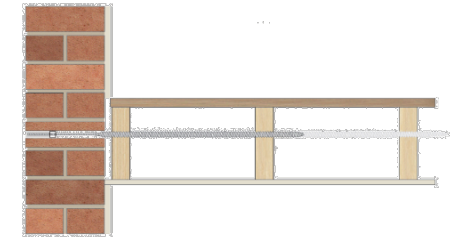
RB02 Restraining a Bowed Solid Wall using BowTie HDs into Joist Side



METHOD STATEMENT

1. Mark the positions for the BowTie HD clearance holes on the external wall.
2. Drill the clearance hole (normally 16mm) through the masonry to line up with the joist in the middle third of the timber away from the edges.
3. Clean out the hole to clear any dust or debris.
4. Fit the driver into an SDS hammer drill, set to rotary only. Insert the BowTie HD into the driver.
5. Screw the BowTie HD through the first and second joists (and the third if specified).
6. Place the sleeve over the tie and push it to the back of the hole in the outer leaf masonry.
7. Inject Helifix PolyPlus resin into the hole to fill it completely.
8. Allow the resin to gel (normally 15 to 20 minutes).
9. Make good all holes at the surface with brick dust or matching mortar or leave ready for any decoration.
10. Clean PolyPlus tools with a suitable solvent.

N.B. Ensure ceiling void is free of pipes and cables.



RECOMMENDED TOOLING

For drilling and insertion of BowTies.....SDS rotary hammer drill 650/700w
 For installation of BowTies.....BowTie HD driver
 For injection of PolyPlus resin.....Applicator gun

Specification Notes

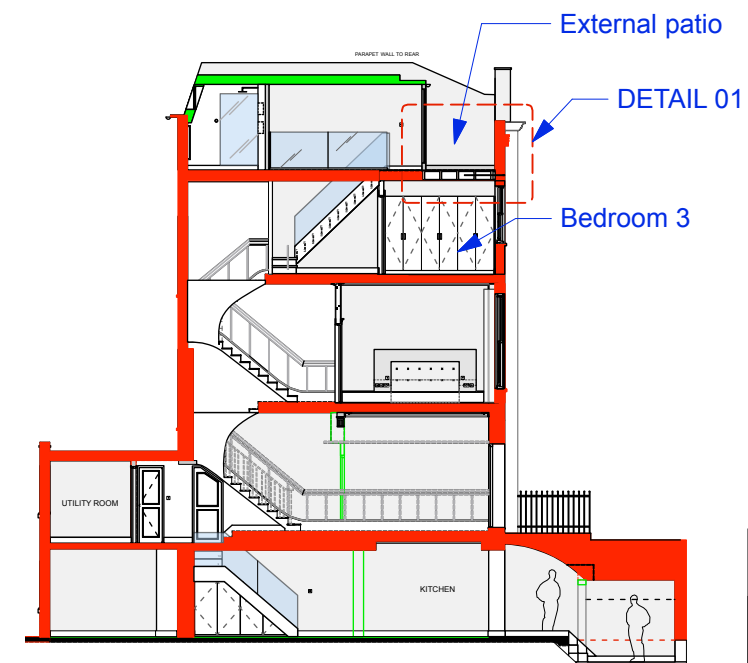
- The following criteria are to be used unless specified otherwise:
- A. BowTie HD penetration into the side grain of the last timber joist must be a minimum of 75mm or the tie should be driven through the joist.
 - B. The maximum horizontal spacing between BowTies is 600mm.

The above specification notes are for general guidance only and Helifix reserves the right to amend details/notes as necessary.

GENERAL NOTES

If your application differs from this repair detail or you require specific advice on your particular project, call the Helifix Technical Sales Team on 020 8735 5222. Our Technical Department can provide you with a full support service including:

- Advice, assistance and recommendations on all structural repair matters
- Devising and preparing complete repair proposals for specific situations
- An insurance-backed warranty via our Approved Installers scheme



ISSUE: DATE: COMMENT:
 - OCT 16 Issue for planning and listed building consent

CallenderHoworth <small>Morelands 5-23 Old Street London EC1V 9HL</small>		<small>T: 020 7336 8560 F: 020 7549 2152 W: www.callenderhoworth.com</small>	
Job no.	Job title		
1198	4 OVAL ROAD		
Drawing no.	Drawing title		
122.02	PROPOSED WALL PINING		
Scale	Size	Drawn	Revision
1:1	A3	ML	-

1 SECTION DETAIL 01
Scale: 1:5

2 SECTION
Scale: 1:200