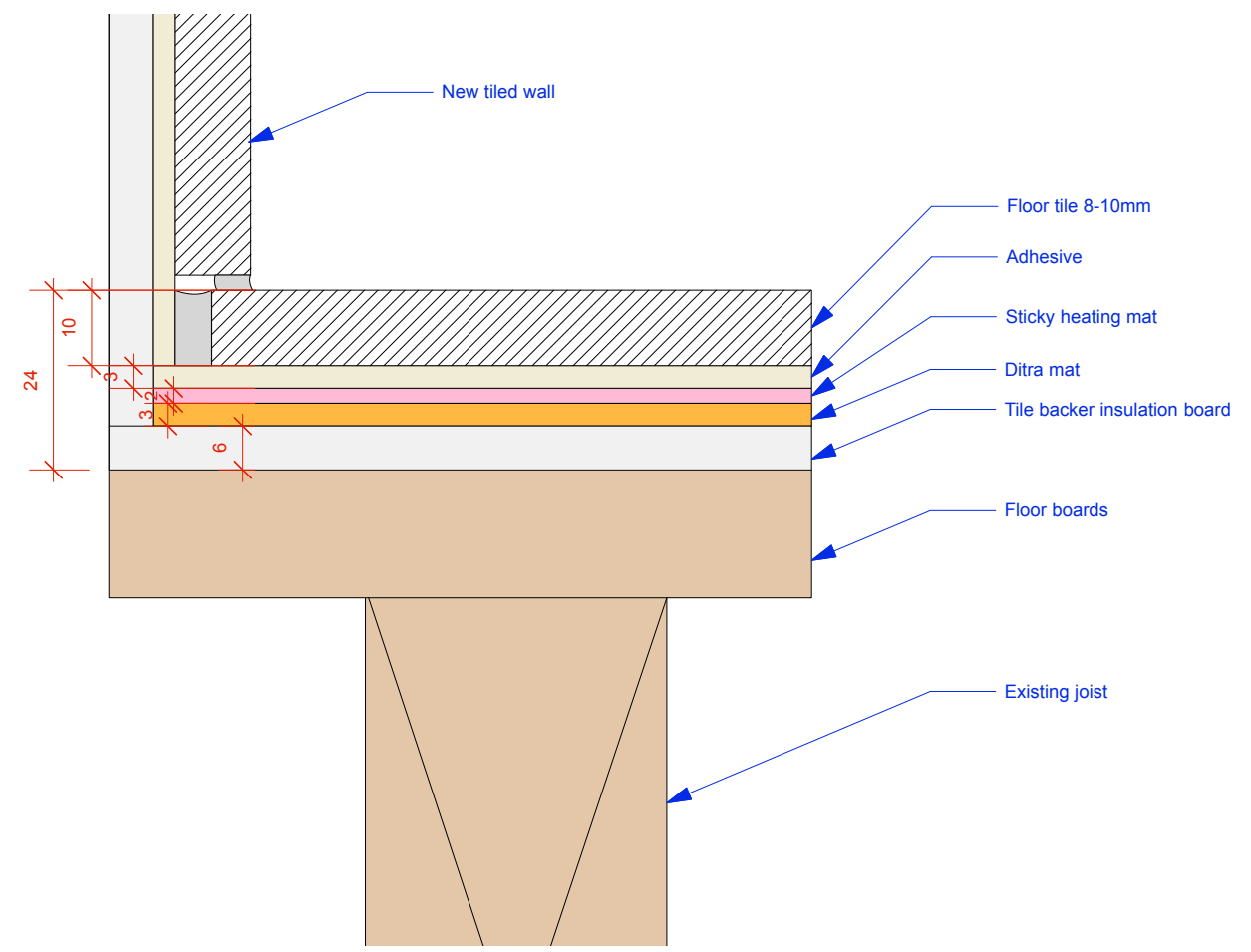
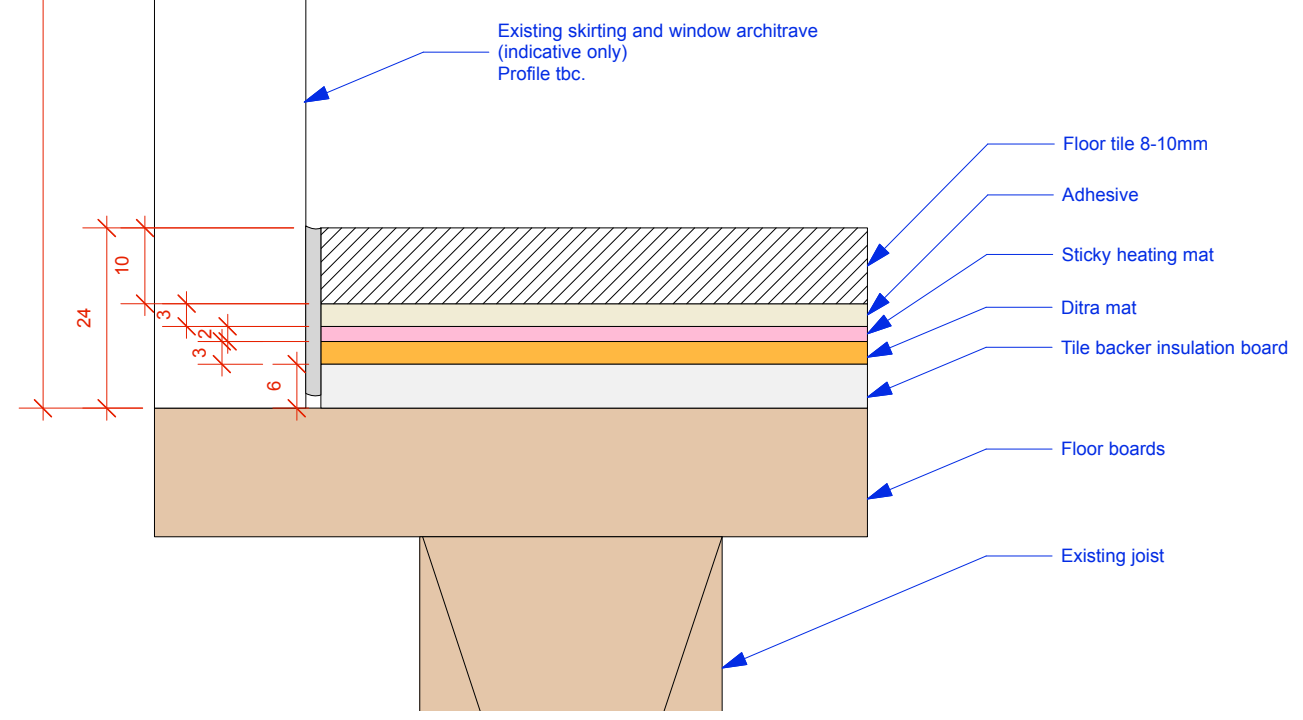


Note:  
 Under floor electric mat heating to first floor ensuite and second floor bathroom.  
 In en-suite new floor tiles to butt up close to existing skirting and window architrave with mastic.  
 On second floor non original bathroom, to have all new internal bathroom walls.



2 UNDER FLOOR HEATING - SECOND FLOOR  
 Scale 1:1



1 UNDER FLOOR HEATING - FIRST FLOOR  
 Scale 1:1

**STICKY MAT SYSTEM**  
 Warmup > Browse Products > Electric Systems > Sticky Mat  
 Electric underfloor heating mat with pressure sensitive adhesive for the fastest installation

Guide Price  
**from £86.24 /m<sup>2</sup>**  
 ex. VAT

GET A QUOTE



Warmup StickyMat system is suitable for all projects: new-build, retrofits and refurbishments.

The StickyMat System consists of a thin loose wire evenly spaced and taped to a glassfibre mesh with pressure sensitive adhesive, which allows for the fastest and most secure installation method of electric underfloor heating. The system is available in a choice of 150 W/m<sup>2</sup> and 200 W/m<sup>2</sup> heat outputs.

**Safety Net Installation Guarantee**  
 If you accidentally damage the heating system during installation, return it to Warmup and we will replace it with another heater of the same make and model free.

**Lifetime Limited Warranty**  
 This product comes with a Lifetime Warranty.

ISSUE:	DATE:	COMMENT:
	OCT 16	Issue for planning and listed building consent
<b>CallenderHoworth</b>		Morelands 5-23 Old Street London EC1V 9HL T: 020 7336 8560 F: 020 7549 2152 W: www.callenderhoworth.com
Job no.	Job title	
<b>1198</b>	<b>4 OVAL ROAD</b>	
Drawing no.	Drawing title	
<b>121</b>	<b>PROPOSED UNDER FLOOR HEATING BUILD UP</b>	
Scale	Size	Drawn
1:1	A3	ML
		Revision
		-

All works to be in accordance with relevant standards, British building codes, and other relevant codes, and with manufacturers recommendations and instructions. All dimensions to be checked on site. Do not scale from this drawing.