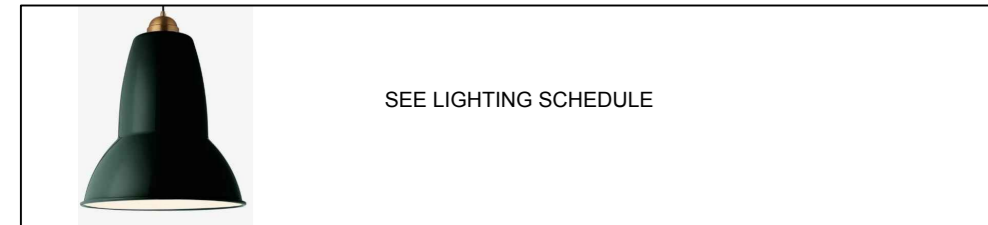
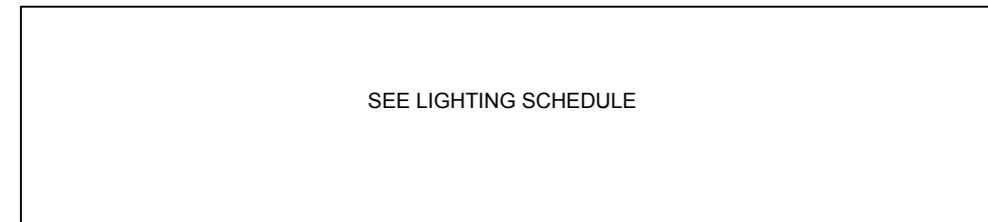


LIGHTING KEY:



SEE LIGHTING SCHEDULE
CENTRAL LIGHT FITTING



SEE LIGHTING SCHEDULE
WALL WASHER FITTING



SEE LIGHTING SCHEDULE
EXPOSED CEILING



SOFTWOOD TIMBER TRELLIS FRAME TO BE STAINED TO A/JB STAN #18
TRELLIS



POWDER COATED BLACK METAL MESH PANELS WITH 15MM BLACK FRAME MOUNTED TO WALL WITH SATIN BRASS DECORATIVE STANDOFFS
BLACK METAL MESH PANELS



Stand off bolts in brass
DECORATION STAND OFFS

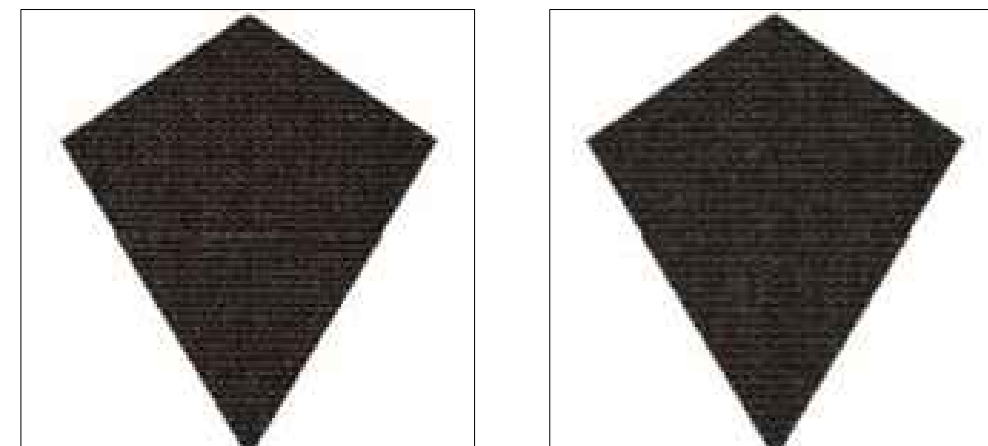


DULUX COLOUR PALETTE T08G095 DIAMOND EMULSION EGG SHELL
PF-10 PAINT FINISH



TIMBER PANELLING AND MOULDINGS STAINED TO MATCH REVOLVING DOORS
TIMBER PANELLING MOULDINGS & SKIRTING

FLOOR FINISHES KEY:



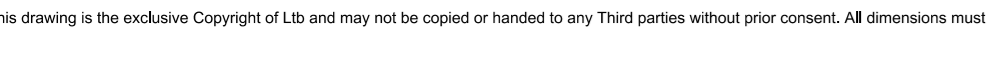
Ege Carpets, Epoca Knt Ecotrust, FIGURA KITE PATTERN, DARK EARTH BROWN
CP-2A CARPET



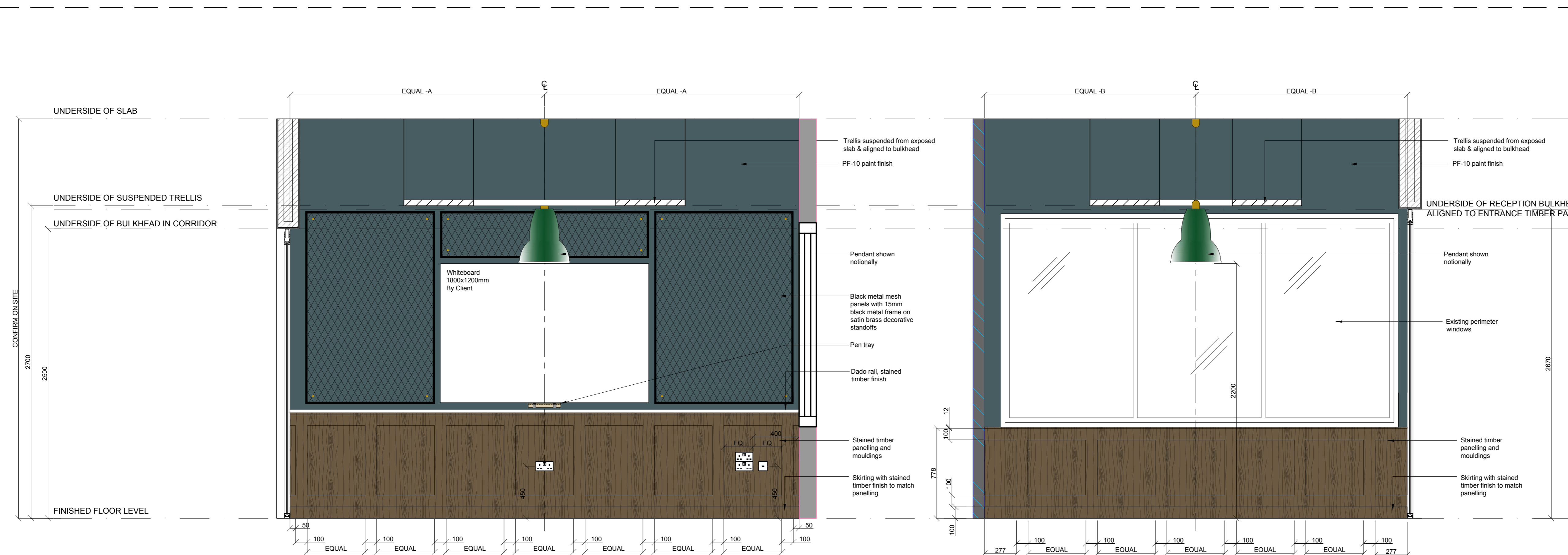
Ege Carpets, Epoca Knt Ecotrust, FIGURA KITE PATTERN, GREY-BROWN
CP-2B CARPET



Ege Carpets, Epoca Knt Ecotrust, FIGURA KITE PATTERN, BLACK
CP-2C CARPET

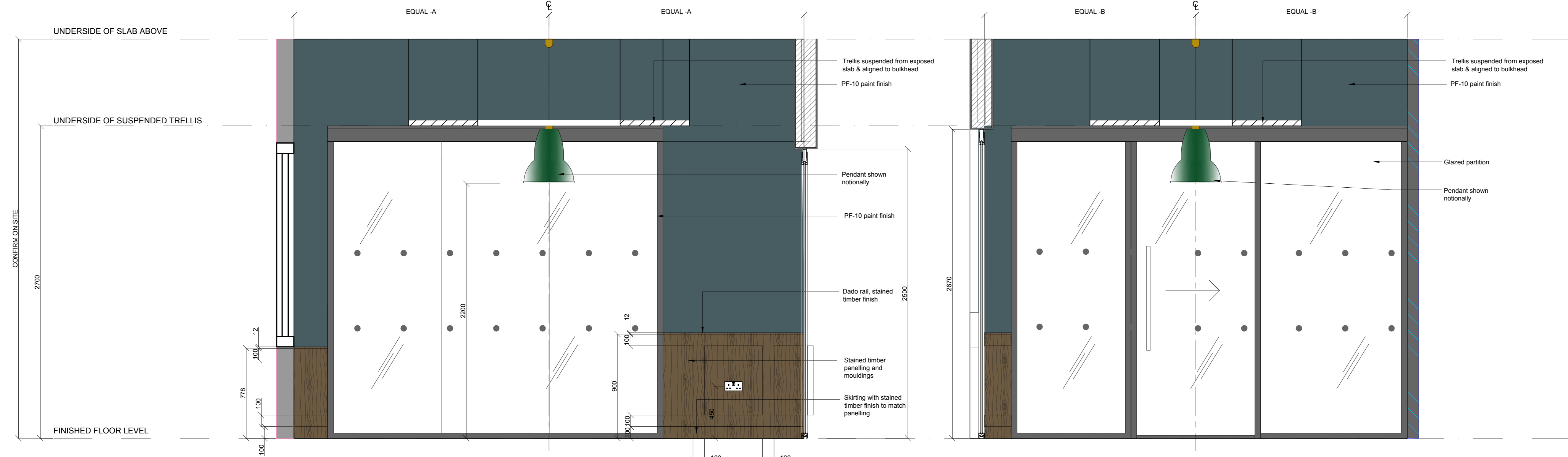


Ege Carpets, Epoca Knt Ecotrust, FIGURA KITE PATTERN, CONCEPT ONLY
CP RANDOM PATTERN



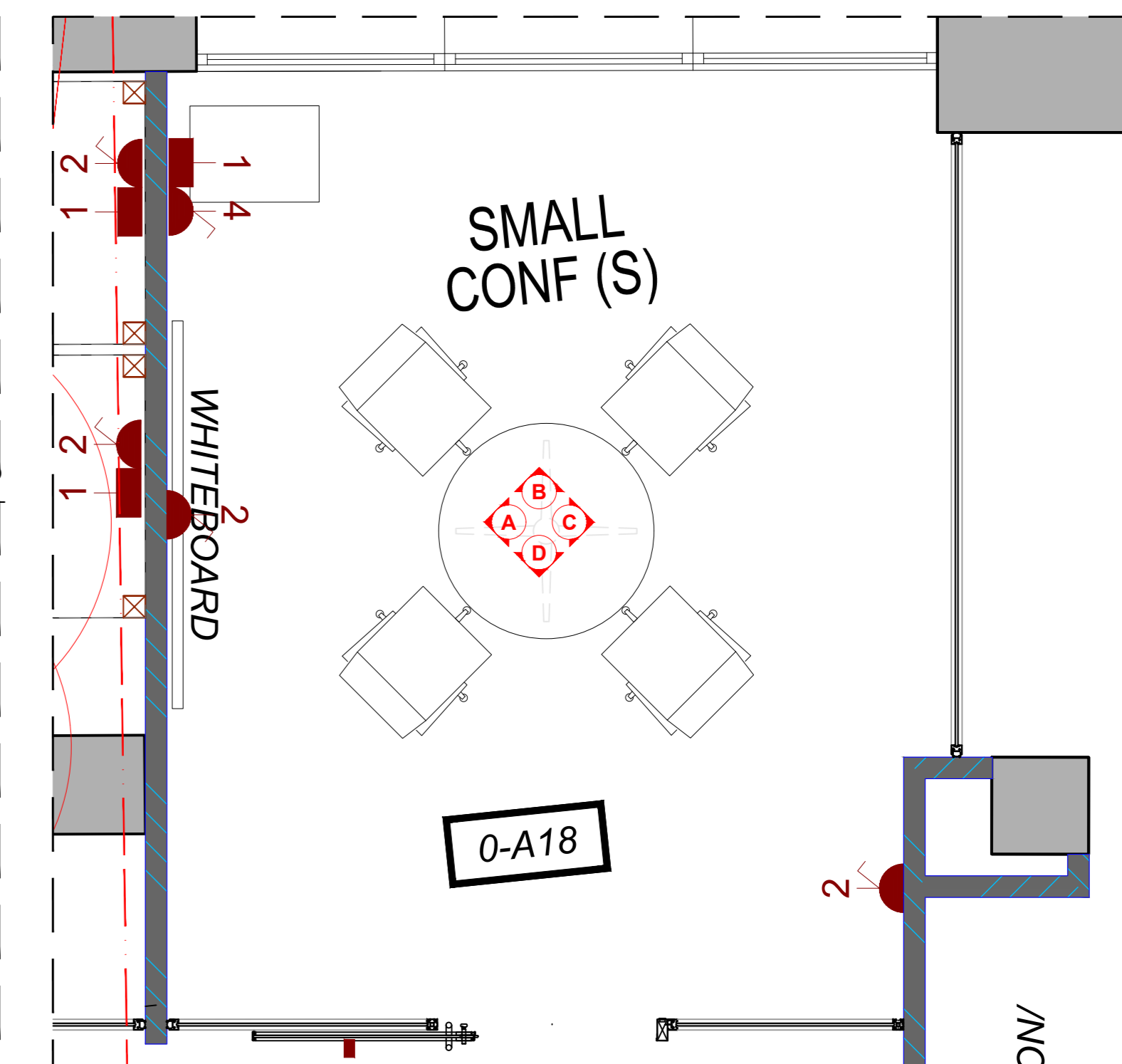
ELEVATION A
SMALL CONFERENCE ROOM 0-A18
SCALE 1:20

ELEVATION B
SMALL CONFERENCE ROOM 0-A18
SCALE 1:20

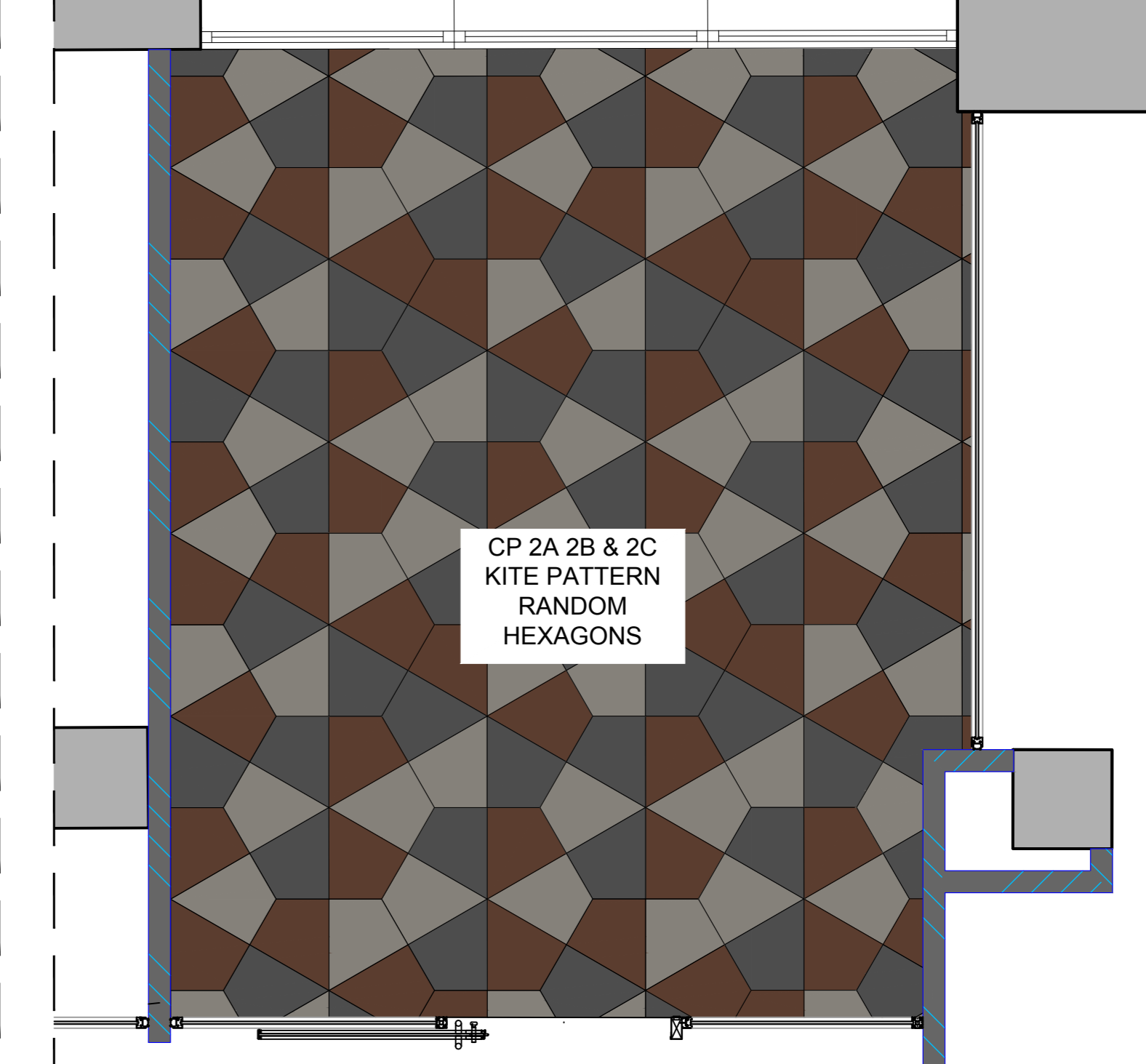


ELEVATION C
SMALL CONFERENCE ROOM 0-A18
SCALE 1:20

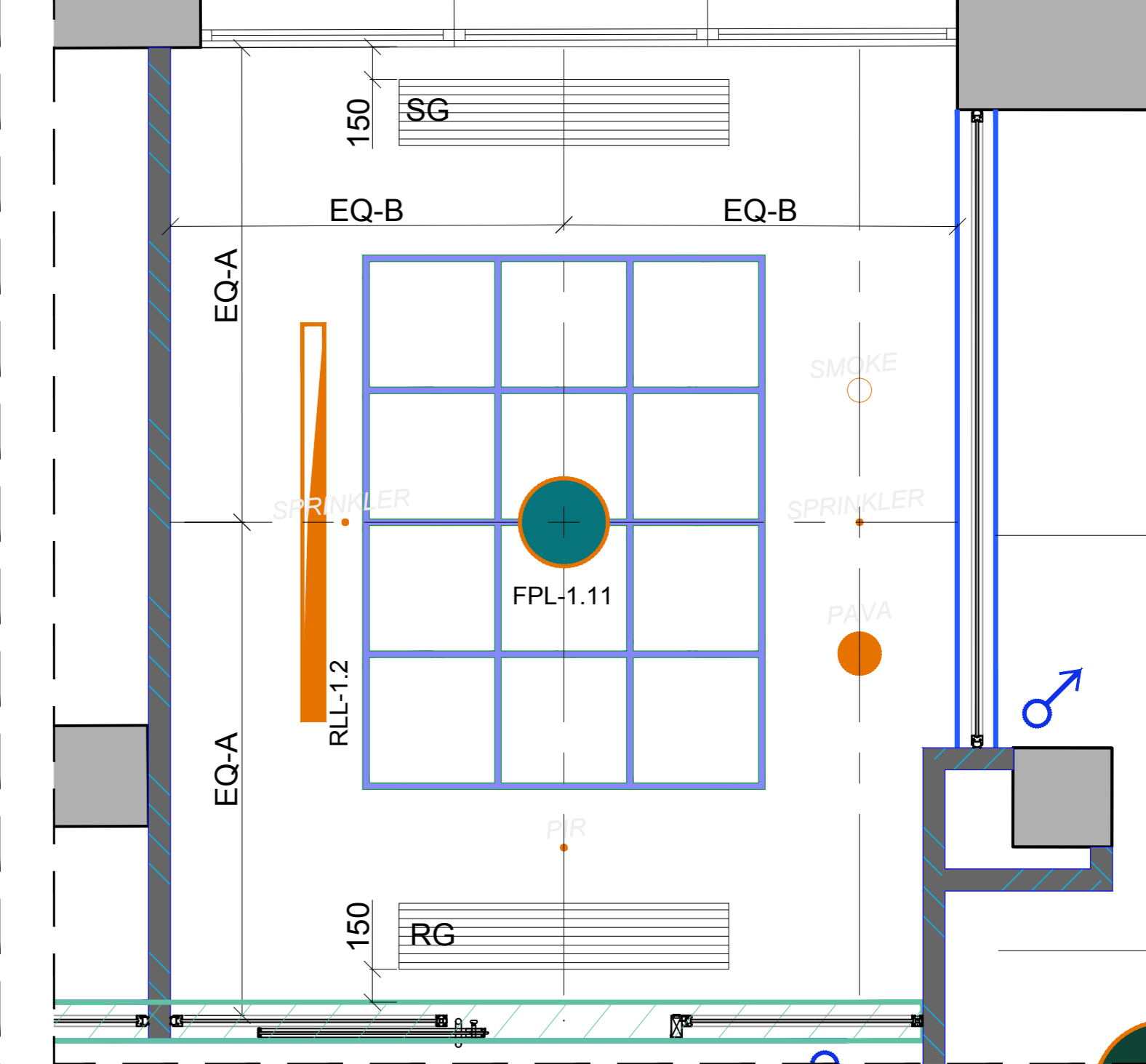
ELEVATION D
SMALL CONFERENCE ROOM 0-A18
SCALE 1:20



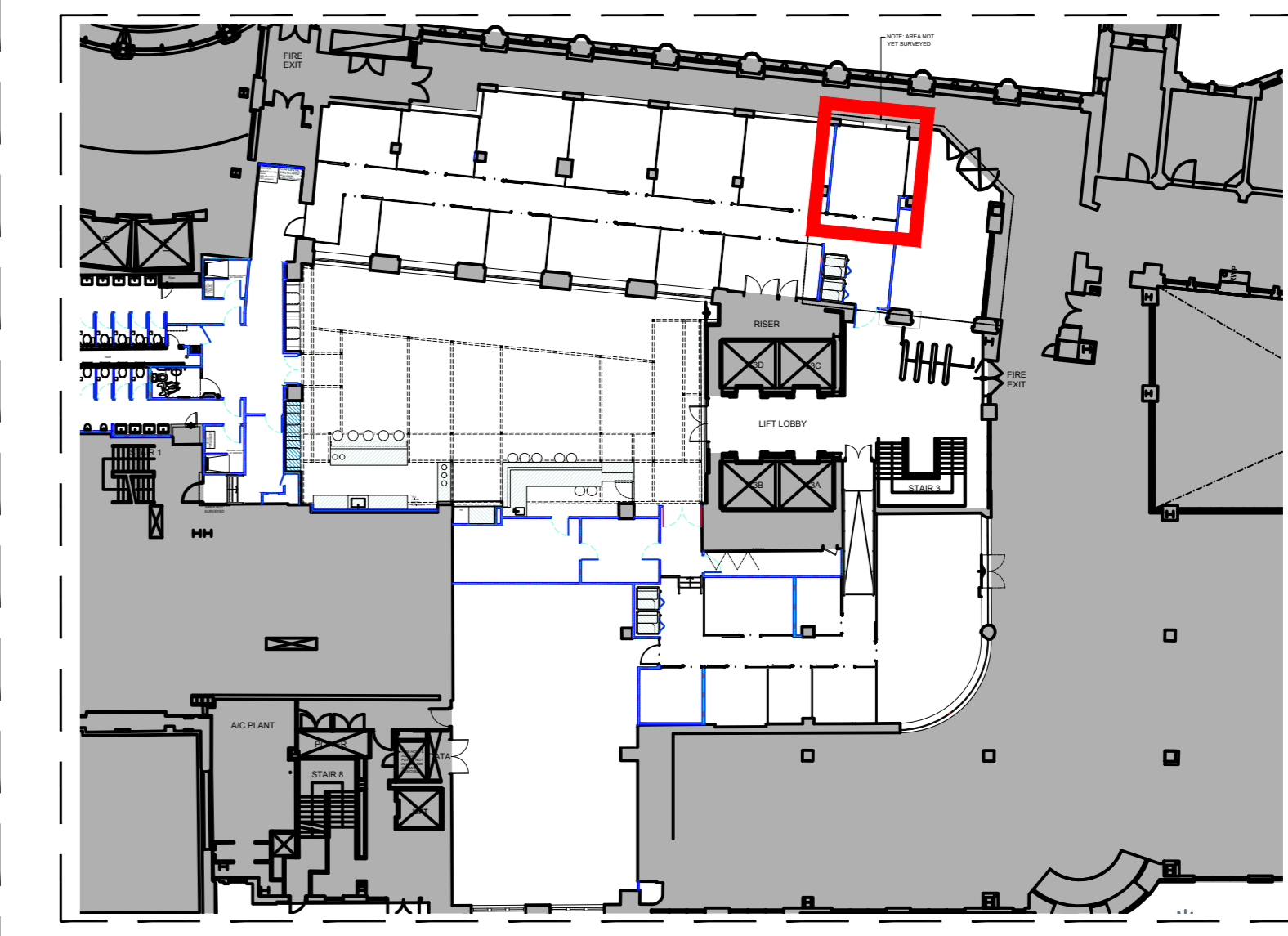
FLOOR PLAN - SMALL CONFERENCE ROOM 0-A18
SCALE 1:25



FLOOR FINISHES PLAN - SMALL CONFERENCE ROOM 0-A18
SCALE 1:25



CEILING PLAN - SMALL CONFERENCE ROOM 0-A18
SCALE 1:25



LOCATION PLAN
NOT TO SCALE

DRAWING TO BE READ IN CONJUNCTION WITH THE FOLLOWING:
- MAIN FINISHES SCHEDULE
- WALL FINISHES DRAWING
- SKETCH & JOINERS DETAIL DRAWINGS
- VIASTAK AUDIO VISUAL DETAILS
- CONTRACTOR / LTB LOW LEVEL SERVICES DETAILS

*FINISHES SCHEDULES TO TAKE PRECEDENCE OVER DRAWINGS

EXACT SCREEN SIZES ARE TO BE CHECKED BY VIASTAK - TIMBER MOULDING MUST WORK WITH THE SCREENS AND NOT AGAINST

ROOM SIGNAGE BY WEWORK

HIGH LEVEL SERVICES SHOWN NOTIONALLY. SIZE & SPECIFICATION TO BE CONFIRMED BY RELEVANT CONTRACTOR.

Rev	Descriptive amendments	Drawn by	Date
D	Finishes revised	ANHL	26.10.16
C	Timber trellis	DS	11.10.16
B	Revised to latest GA, finishes revised	AN	09.08.16
A	Drawing updated to latest GA	CA	05.08.16
-	Drawing first produced	AN	24.06.16

PRE-DESIGN	
Client	WeWork
Client Contact	
Site Address	03 Waterhouse Square - PHASE 3 Holborn Bars London
Drawing Title	Ground Floor - Conference Room Details 0-A18
Designer/ Senior Tech. Designer / Project Manager	Ellen Fehi / Glenda Puntel / Martin Leeper
Scale	VARIES@A0
Drawn By	AN
First Drawing Date	22/06/2016
Contract Number	1076
Building	01
Floor	0G
Detail	DT06.4
Revision	D

ltb.
1st floor,
322 High Holborn,
London, WC1V 7PB
T: +44 (0)20 7553 9500

2016.10.20 WW REVISION:
Finishes revised generally to
WW comments, updated to
latest GA

NOTE: This drawing is the exclusive Copyright of LTB and may not be copied or handed to any Third parties without prior consent. All dimensions must be checked on site and not scaled from the drawing. All drawings and proposals are subject to approvals by statutory authorities.