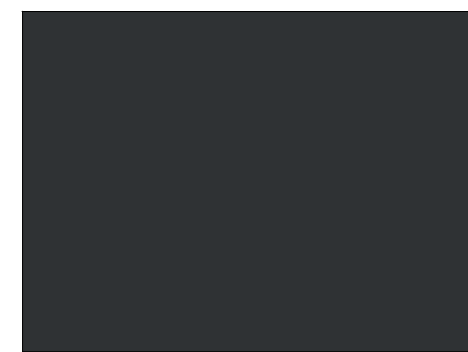




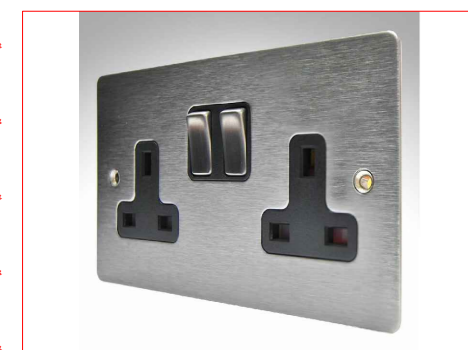
P-1 PAINT FINISH
DULUX COLOUR PALETTE
50Y 63/041



P-2 PAINT FINISH
DULUX COLOUR PALETTE
90B5 05/075

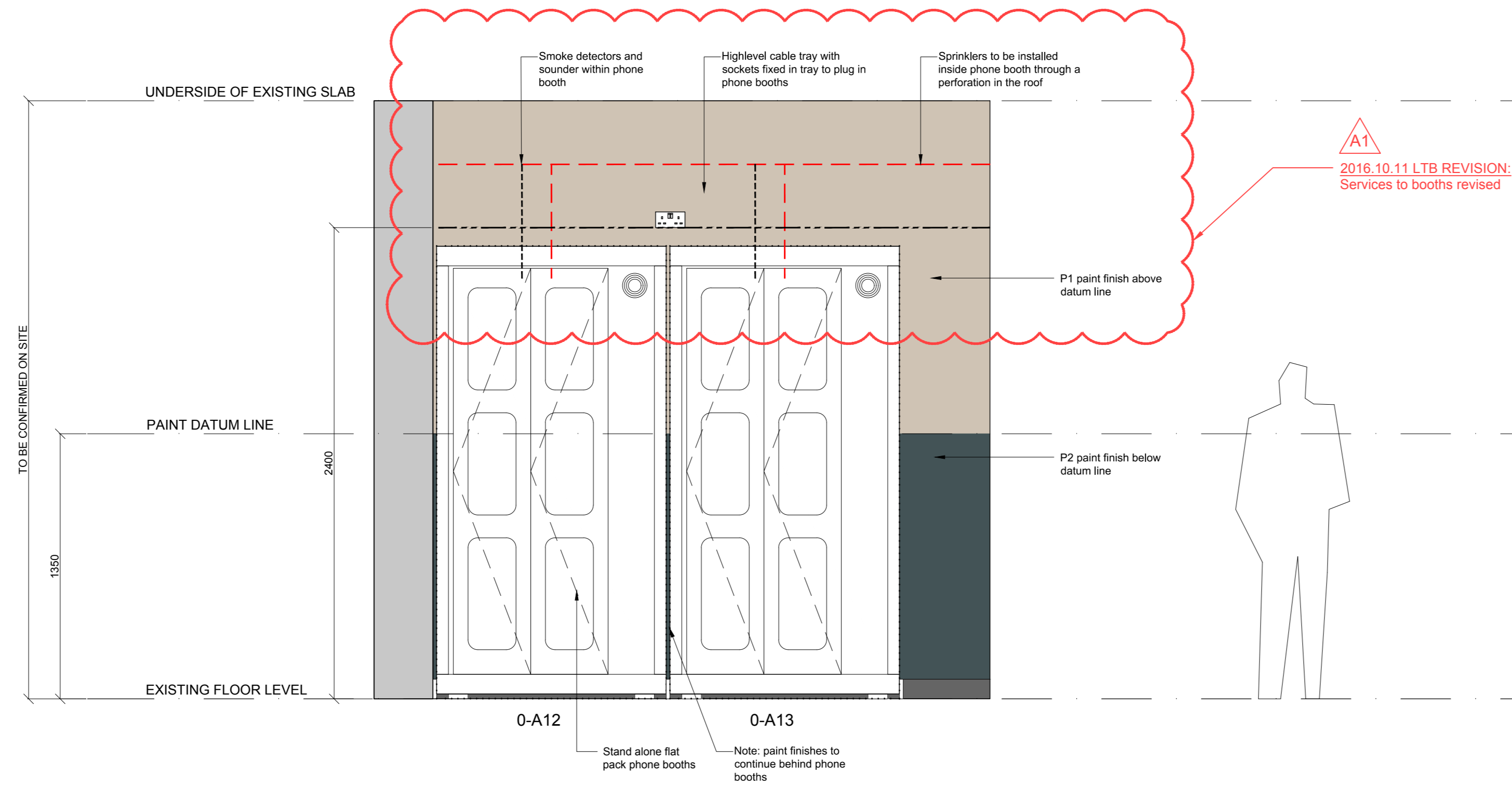


SKIRTING FINISH
SK-P SKIRTINGS TO RAL 7021

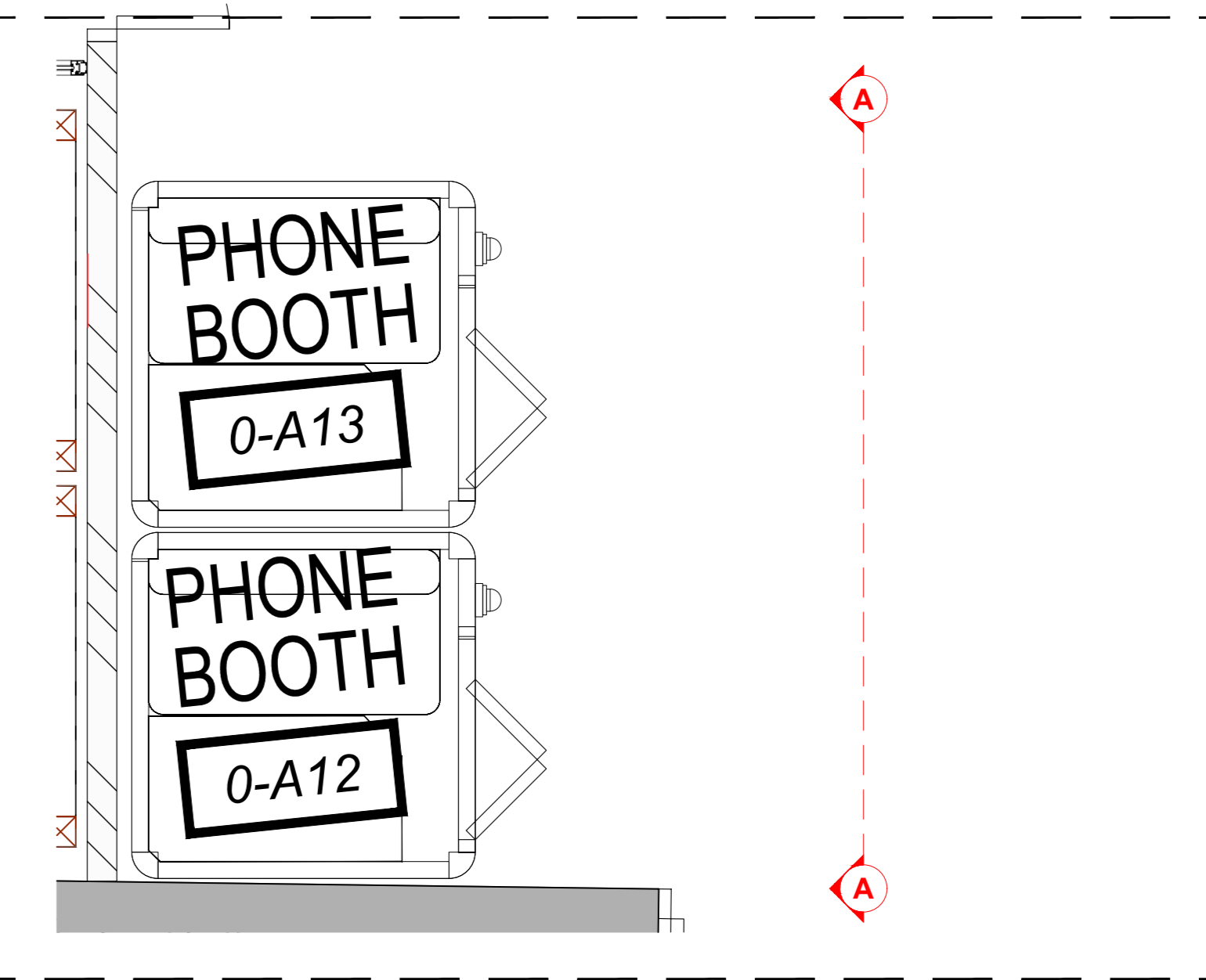


MS03.1 DOUBLE SOCKET BRUSHED
STAINLESS STEEL BLACK INSERT
SOCKET FINISH

A2
2016.10.11 LTB REVISION:
Finish added



PHONE BOOTH ELEVATION A-A
SCALE 1:20



PLAN - PHONE BOOTHS 0-A12, A-13
SCALE 1:20

DRAWING TO BE READ IN CONJUNCTION WITH FINISHES SCHEDULE, JOINERS DETAIL DRAWINGS & ALL RELEVANT DETAIL DRAWINGS.

AFFL = Above finished floor level (ie from top of timber floor upwards)

COLOURS AND FINISHES SHOWN NOTIONALLY - SEE ACTUAL SAMPLES FOR FINAL FINISHES AND TEXTURES.

FINISHES SCHEDULE TAKES PRECEDENCE OVER DRAWINGS SPECIFICATIONS.

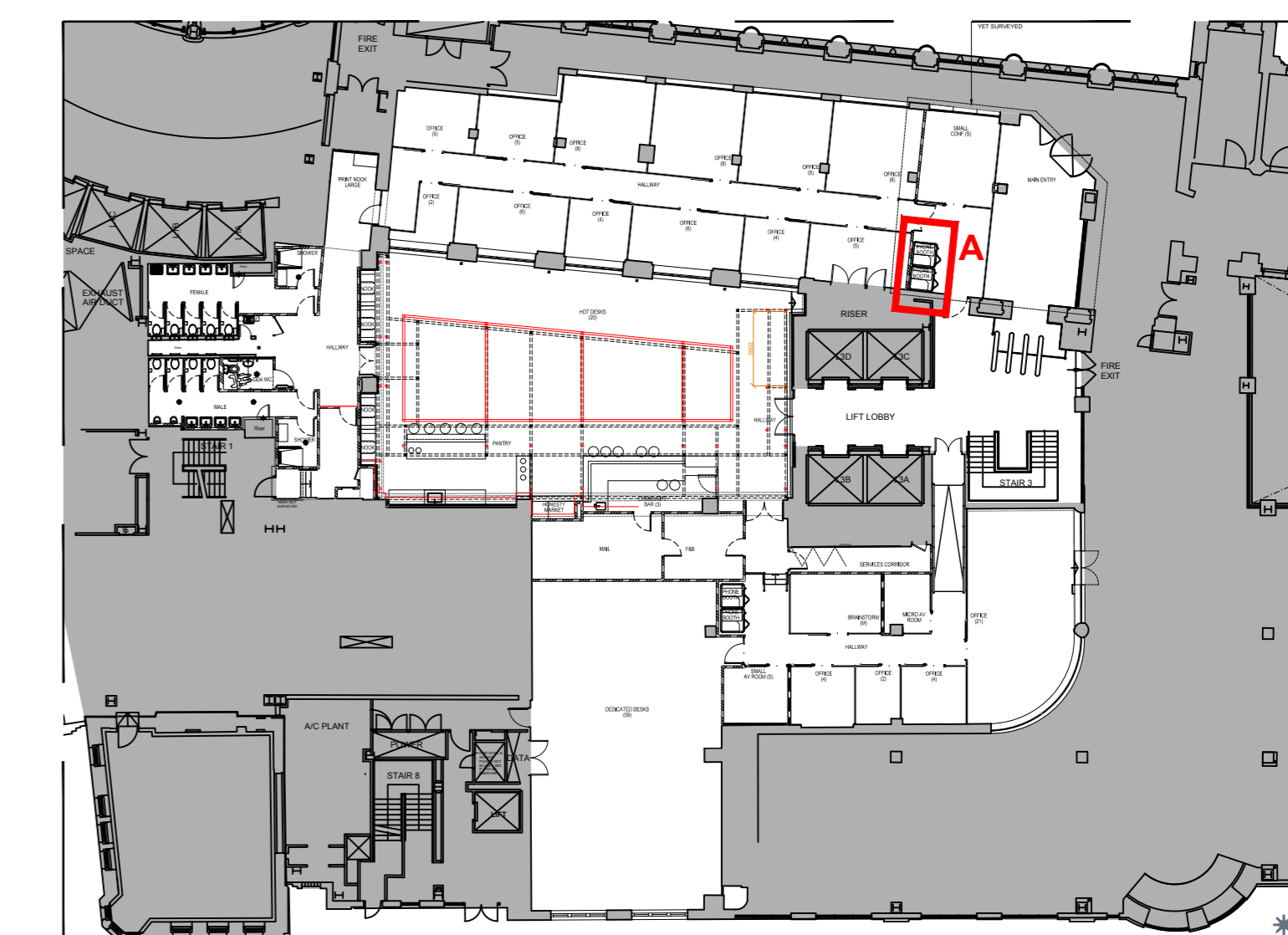
DRAWING TO BE READ IN CONJUNCTION WITH TYPICAL PHONE BOOTH DETAIL FOR DIMENSIONS AND SETTING OUT DETAILS.

WALLS & CEILINGS TO ACHIEVE CLASS 1 SPREAD OF FLAME

SPRINKLERS TO BE INSTALLED INSIDE PHONE BOOTH

MECHANICAL AND ELECTRICAL SERVICES ALREADY INCLUDED IN PHONE BOOTH UNITS

NOTE:
FLOOR PLAN SHOWING FOOTPRINT OF NEW STANDARD FLAT PACK PHONE BOOTH.



Rev	Descriptive amendments	Drawn by	Date
A	Drawing revised	DS	11.10.16
-	Drawing first produced	AN	09.08.16

PRE-DESIGN

Client
WeWork

Site Address
03 Waterhouse Square - PHASE 3
Holborn Bars
London

Drawing Title
Ground Floor - Phone Booth Details

Account Manager
Rob Gregory

Designer Senior Tech. Designer / Project Manager
Ellen Fehi / Glenda Puntel / Martin Leeper

Scale 1:20@A0 Drawn By AN First Drawing Date 21/06/2016

Contract Number 1076 Building 01 Floor 0G Detail DT01 Revision A

ltb. 1st floor, 322 High Holborn, London, WC1V 7PB
T: +44 (0)20 7553 9500