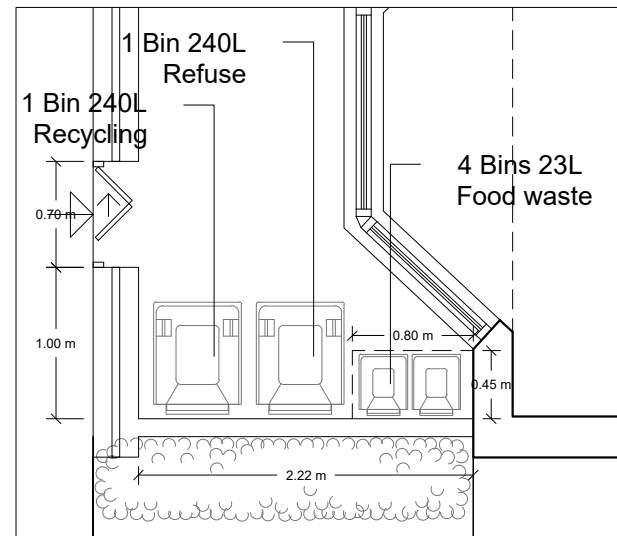
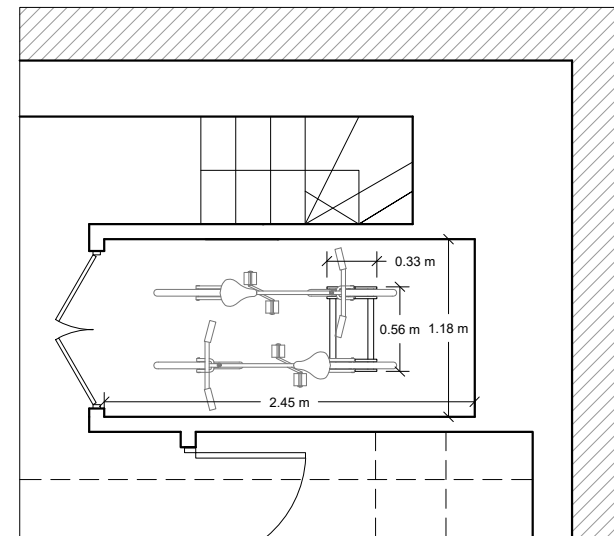


## REFUSE BINS

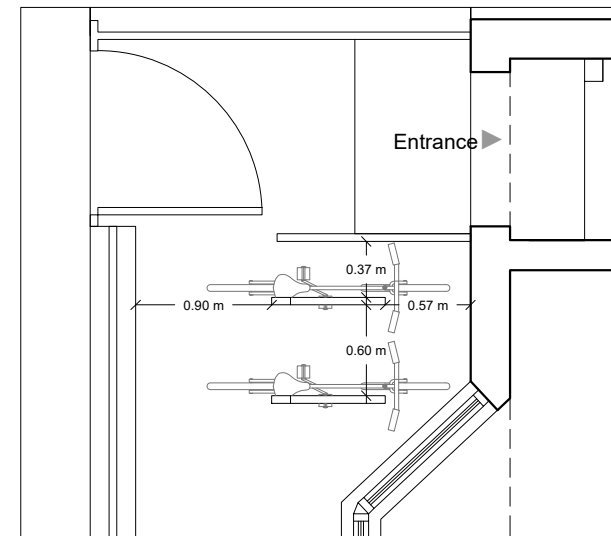


Refuse Bins  
Ground Floor

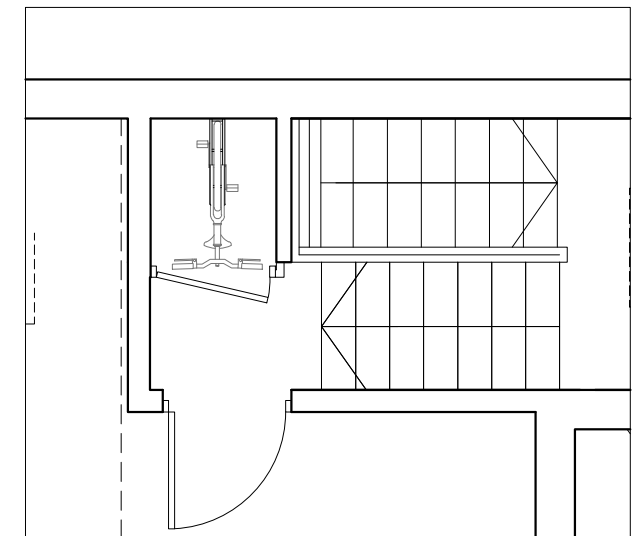
## CYCLE STORAGE



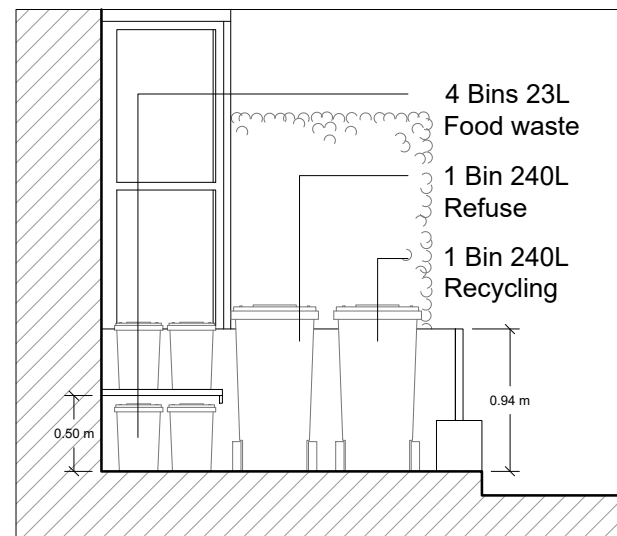
Internal Cycle Storage  
Unit 1 - Basement



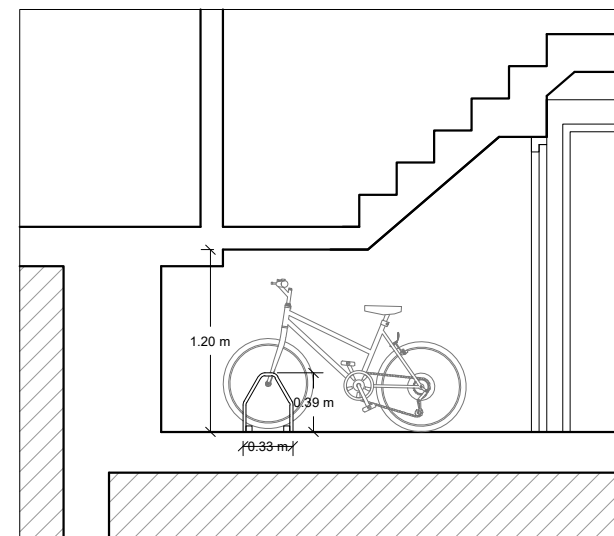
External Cycle Storage  
Unit 2 - Ground Floor Plan



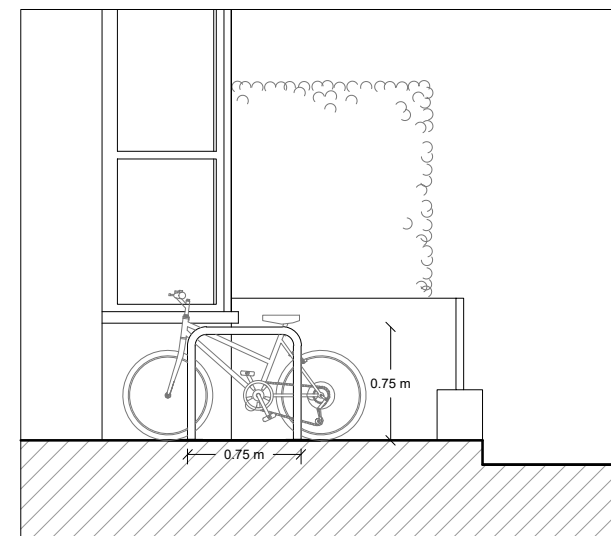
Internal Cycle Storage  
Unit 3 - Upper First Floor



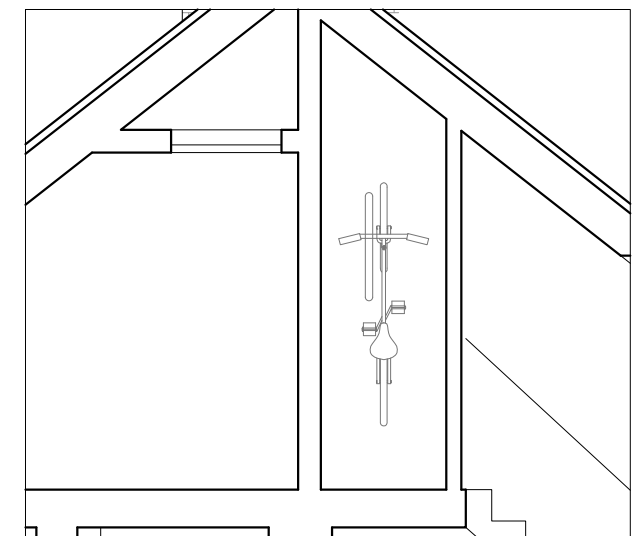
Refuse Bins  
Side Elevation



Internal Cycle Storage  
Unit 1 - Section



External Cycle Storage  
Unit 2 - Side Elevation



Internal Cycle Storage  
Unit 3 - Section

211 SUMATRA ROAD, Refuse Area		
Typology	Number of bins	Sufficient for approx.
240L recycling	1	6 dwellings or fewer
23L food waste	4	3 flats
240L refuse	1	6 dwellings or fewer

211 SUMATRA ROAD, Cycle Spaces			
Typology	n. Flat	Coefficient	n. Cycle Space
1 Bedroom Flat	1	1.00	1.00
2 Bedroom Flat	2	2.00	4.00
Total			5.00



**Dimensions** Written dimensions to be taken in preference to scaled dimensions. The Contractor is responsible for checking all dimensions before work starts.

**Local Authority** All work is to be carried out to the requirements, and to the satisfaction of the Local Authority. These drawings are for planning purposes only.

**Discrepancies** Any discrepancies to be brought to the attention of Drawing And Planning Ltd. Immediately.

REVISIONS					
REV	DATE	DESCRIPTION	BY	CH	

PROJECT TITLE	
211 Sumatra Road	
DATE	REVISION
Oct 2016	/

DRAWING TITLE	
Proposed- Bins & Cycle Storage	
CLIENT	
Magnet Investments Ltd.	
DRAWING No.	SCALE @ A3
SMTRR-BC301	1:100

