

Notes

These drawings are strictly copyright and are not to be used, printed or copied in any form unless expressly permitted by ASB Architects. Any scale indicated on the drawing is only correct provided the drawing is printed at the original "Sheet Size" field. This is typically A1 or A3, printed without reduction, @ 100%

This drawing may include information shown in colour as indicated by the "Printing" field. If the drawing is received incorrectly please refer to the sender or Architects.

Do not scale from these drawings. Refer to figured dimensions only and, where these are missing or cannot be inferred from the given dimensions, refer to the Architect for instruction.

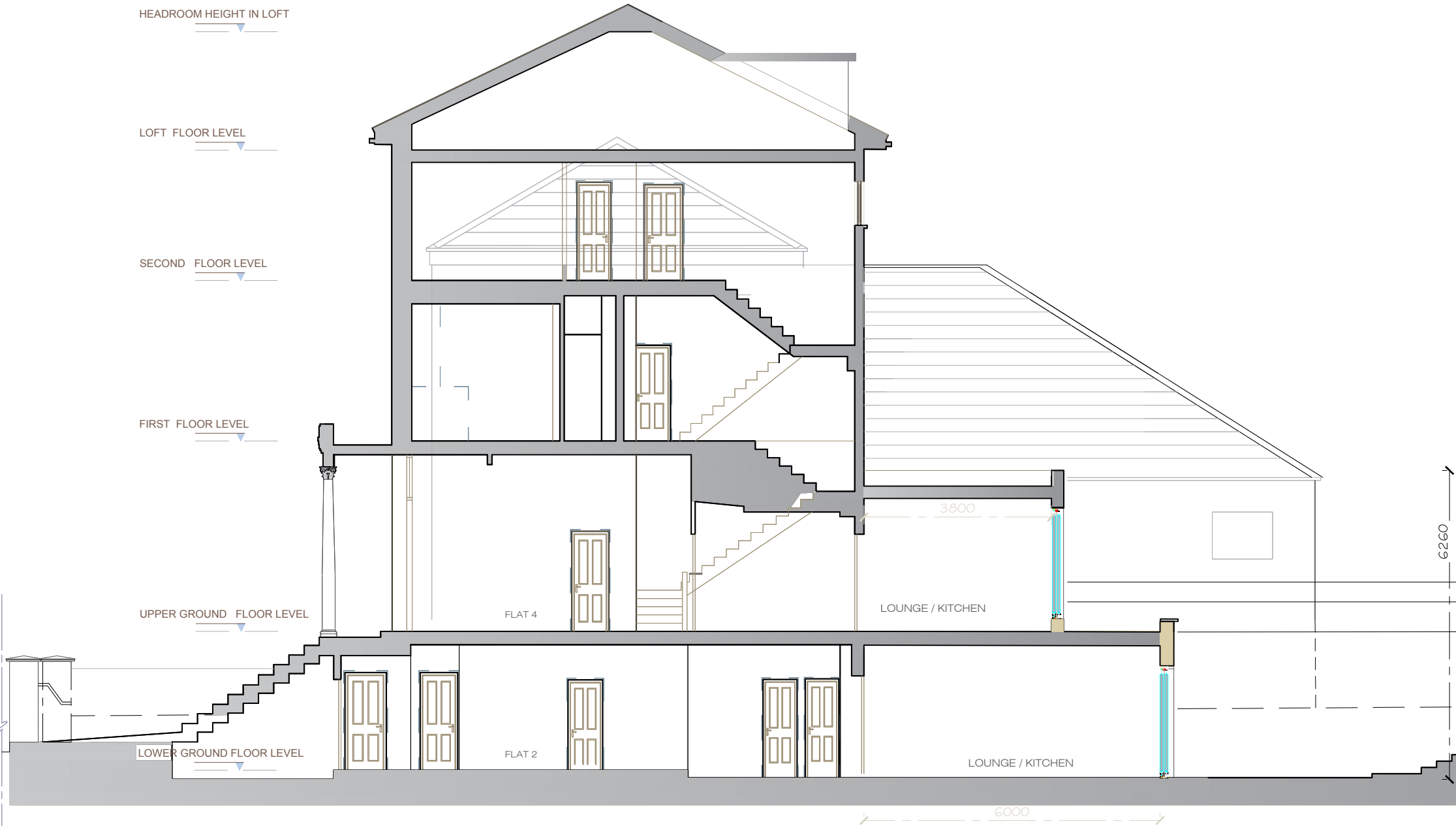
Inform the Architect as soon as possible of any discrepancies found on site.

This drawing is to be read in conjunction with the structural engineers' drawings, all other layout and detail drawings together with the Schedule of Works and Specification.

PLANNING  
APPLICATIONS' SET  
Date 8th AUGUST 2016

REVISION

- A - 29th SEPTEMBER 2015  
INFORMATION ADDED  
B - 7th JUNE 2016  
DRAWING AMENDED  
C - 26th JULY 2016  
DRAWING AMENDED  
D - 4th AUGUST 2016  
DRAWING AMENDED  
E - 9th SEPTEMBER 2016  
DRAWING AMENDED  
F - 20th SEPTEMBER 2016  
DRAWING AMENDED  
G - 27th SEPTEMBER 2016  
DRAWING AMENDED  
H - 29th SEPTEMBER 2016  
DRAWING AMENDED  
J - 7th NOVEMBER 2016  
DRAWING AMENDED



PROPOSED LONG SECTION  
PROPOSED SECTION C - C



Rev.	Date	Notes
ASB ARCHITECTS		
215 West End Lane West Hampstead London NW6 1XJ T: 020 7431 5221 F: 02074315114 E: amos@asbarchitects.com		
Project 58 EST END LANE London NW6 2NE		
Drawing PROPOSED SECTION C - C		
Dwg status	-	Date © MAY 2016
Project Ref	308 / A1	Printing -
SCALE	1: 100	Sheet size A3
Drg No		Rev.
44		J