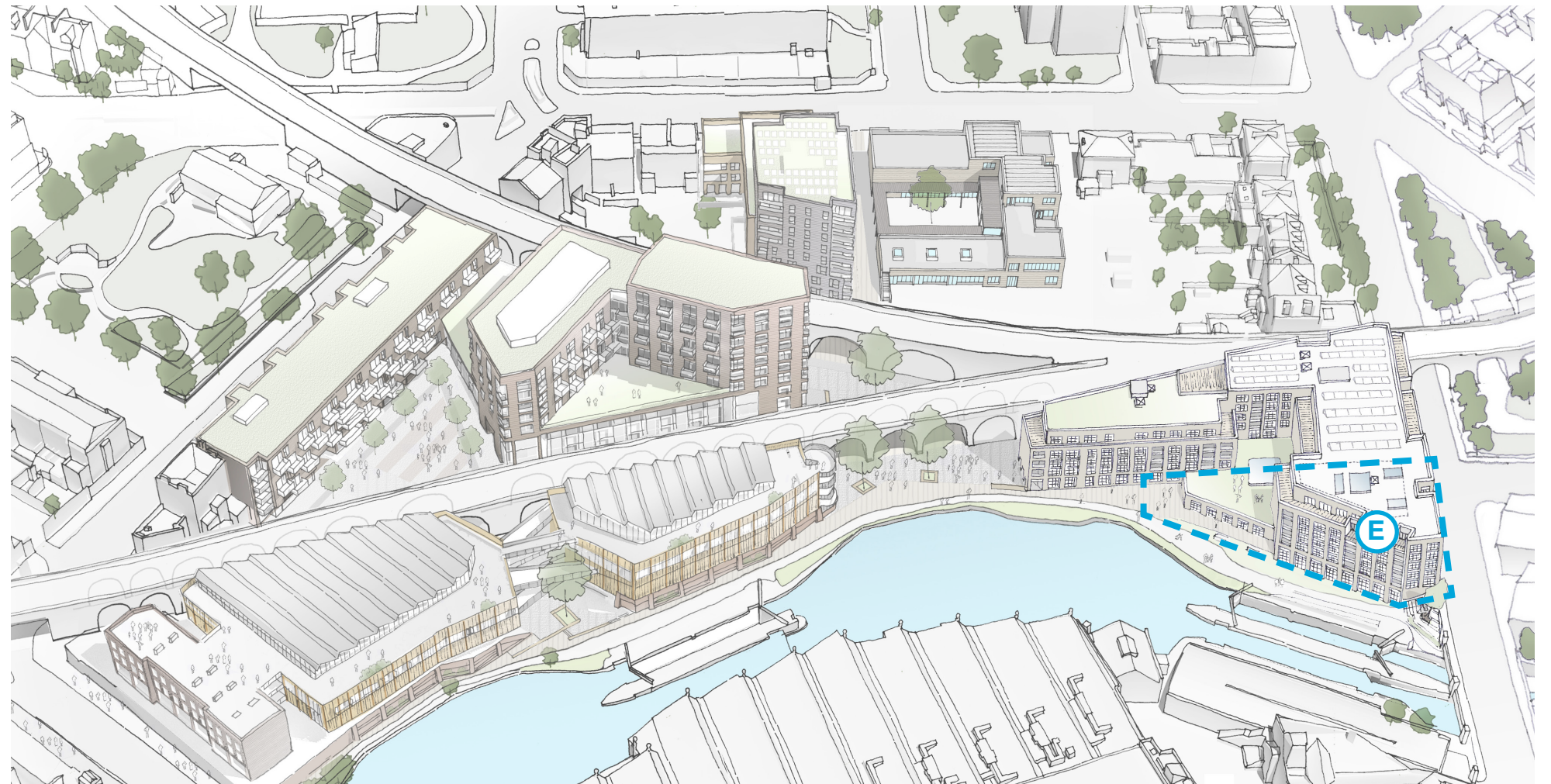


Hawley Wharf

Area E

Non-material Amendments Application - R024

2 November 2016



**ALLFORD
HALL
MONAGHAN
MORRIS**

Contents

1.0	Executive Summary	3
2.0	Area E	4

Document Control

Job Title:	Camden Lock Village
Job number:	14045
Report title:	Area E Non-material amendment application
Report number:	R024
Revision:	00
Date of issue:	November 2016
Purpose of issue:	Planning NMA Application
Compiled by:	Jazmin Rogers- AHMM Architects
Reviewed by:	Kevin Hong - AHMM Architects
Date reviewed:	October 2016
File name/ location	I:\AHMM Images 2014\14045 Camden Lock Masterplan - Build\5.0 Reports\DE\R024_ XXXXXX_E_Final NMA Report

1.0 Executive Summary

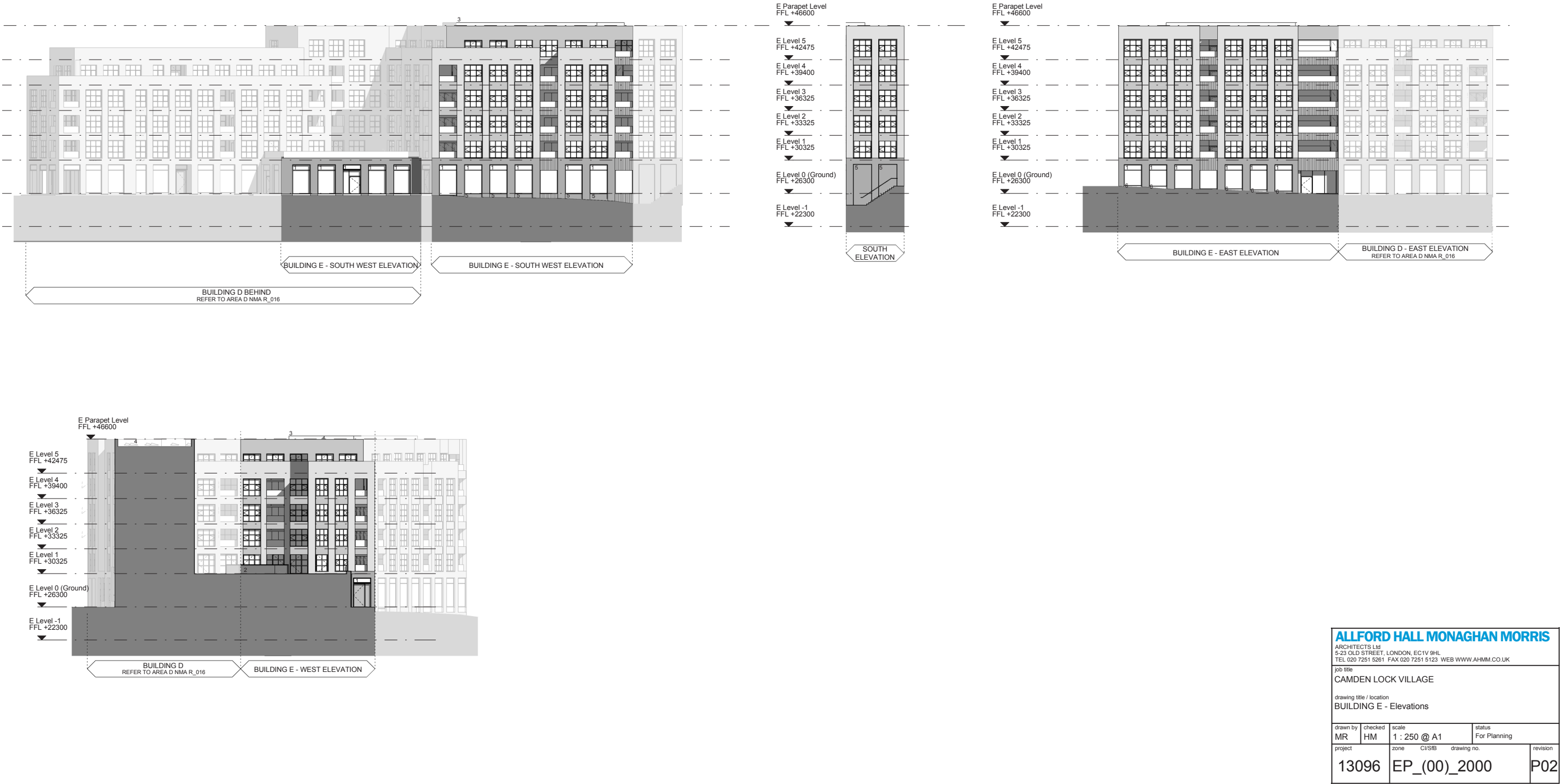
This document has been prepared following planning approval of Area E by committee in June 2016 and subsequent meetings with the Camden London Borough Council to discuss Non Material Amendments. Refer to planning application reference 2015/1937/P.

This document should be read in conjunction with the Non Material Amendment to Area D submitted in combination with Area E's planning application in March 2015 and subsequent NMA Report - R023 submitted at the same time as this document.

Following a detailed design review of the approved scheme, it became apparent that a number of Non material design amendments were required to meet Fire, building regulations and M+E requirements.

4.0 Area E

4.1 Permitted Planning Scheme



4.0 Area E

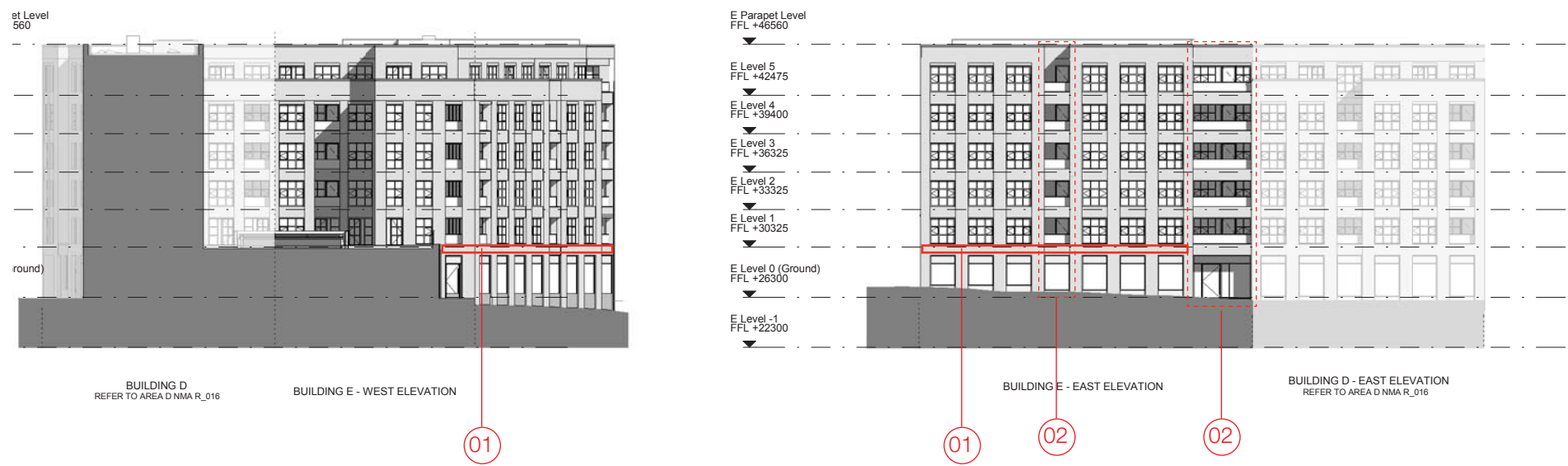
4.2 Revised Scheme



Revisions

- 1 Brick detail simplification - Ground floor
- Reduced detail to head of GF window from base of FF window
- 2 Brick detail simplification - Elevation cuts
- Change stack bond brick to stertcher bond coursing.
- 3 Brick infill panels reduced in size
- 4 Window cills raised to 400mm above internal finished level with metal panel infill below.

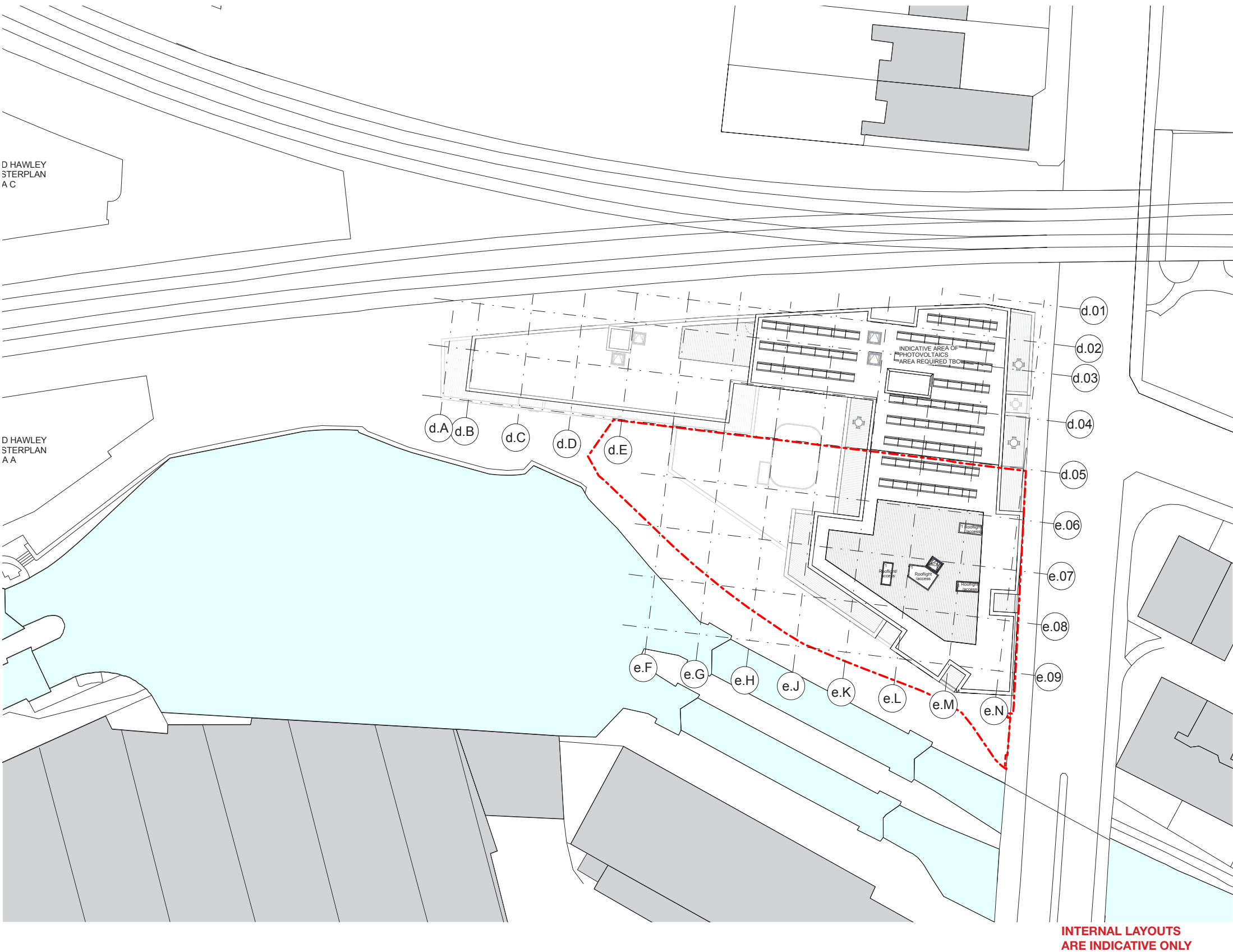
For brick simplification - refer to addendum 14045_DE_RP005_brick development_01 for clarification across combined building DE.



ALLFORD HALL MONAGHAN MORRIS				
ARCHITECTS Ltd 5-23 OLD STREET, LONDON, EC1V 9HL TEL 020 7251 5261 FAX 020 7251 5123 WEB WWW.AHMM.CO.UK				
job title CAMDEN LOCK VILLAGE				
drawing title / location BUILDING E - Elevations				
drawn by JR	checked KH	scale 1 : 250 @ A1	status con	
project 13096	zone EP_(00)_ 2000	drawing no. P03	revision	

4.0 Area E

4.7 Permitted Planning Scheme - Roof Plan



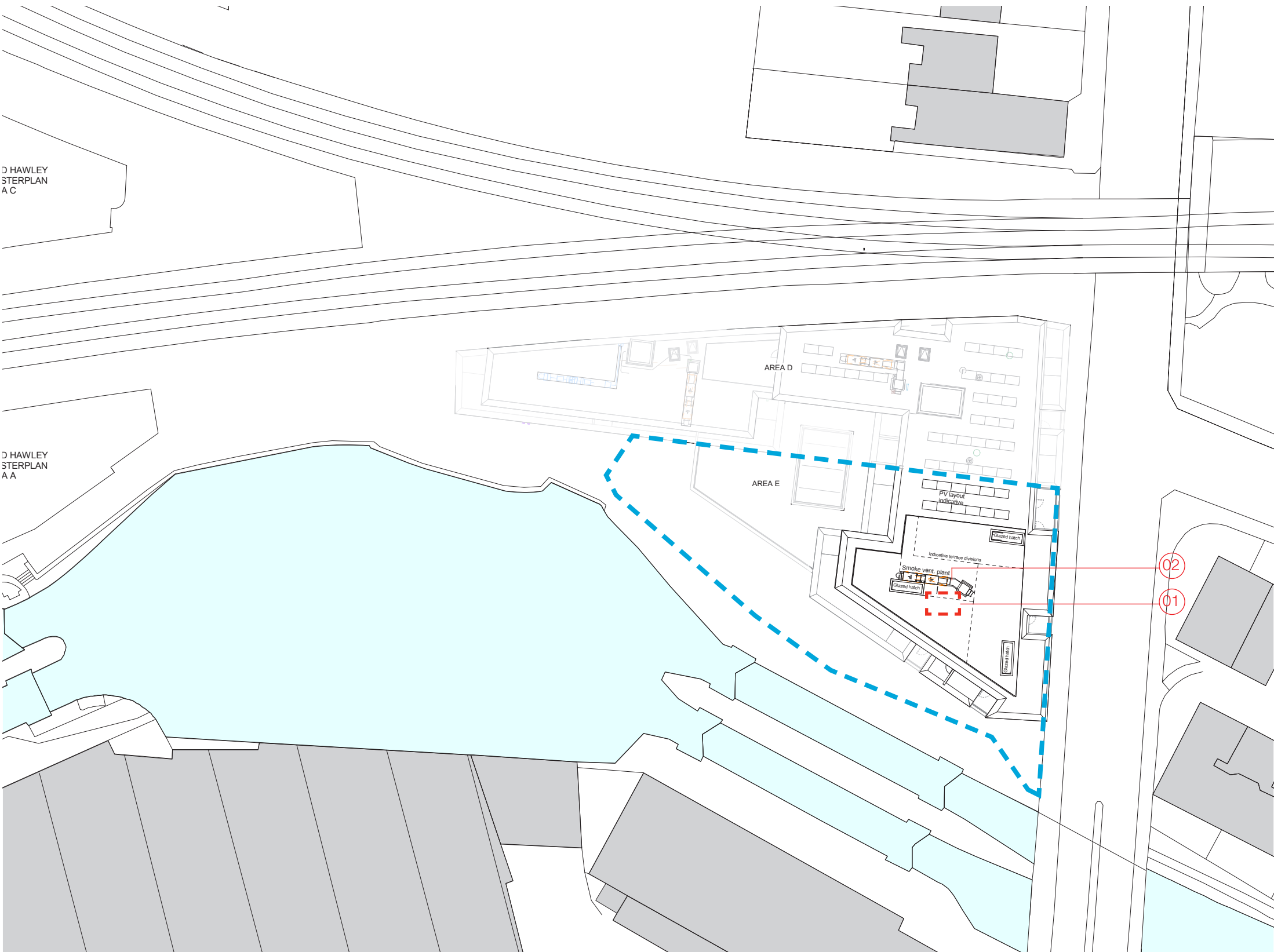
ALLFORD HALL MONAGHAN MORRIS				
ARCHITECTS Ltd 5-23 OLD STREET, LONDON, EC1V 9HL TEL 020 7251 5261 FAX 020 7251 5123 WEB WWW.AHMM.CO.UK				
job title CAMDEN LOCK VILLAGE				
drawing title / location BUILDING E - Level 06 (Roof Plan)				
drawn by JR	checked HM	scale 1 : 250 @ A1	status FOR PLANNING	
project 13096	zone EP_(00)_1260	drawing no. P01	revision	

4.0 Area E

4.8 Revised Scheme - Roof Plan

Revisions

- 1
- Fixed rooflight to corridor omitted to allow for M+E
- 2
- New smoke vent./extract plant added on roof.



ALLFORD HALL MONAGHAN MORRIS				
ARCHITECTS Ltd 5-23 OLD STREET, LONDON, EC1V 9HL TEL 020 7251 5251 FAX 020 7251 5123 WEB WWW.AHMM.CO.UK				
Job title CAMDEN LOCK VILLAGE				
drawing title / location BUILDING E - Level 06 (Roof Plan)				
drawn by JR	checked KH	scale 1 : 250 @ A1	status con	
project 13096	zone EP_(00)_	CI/SIB 1260	drawing no. P02	revision