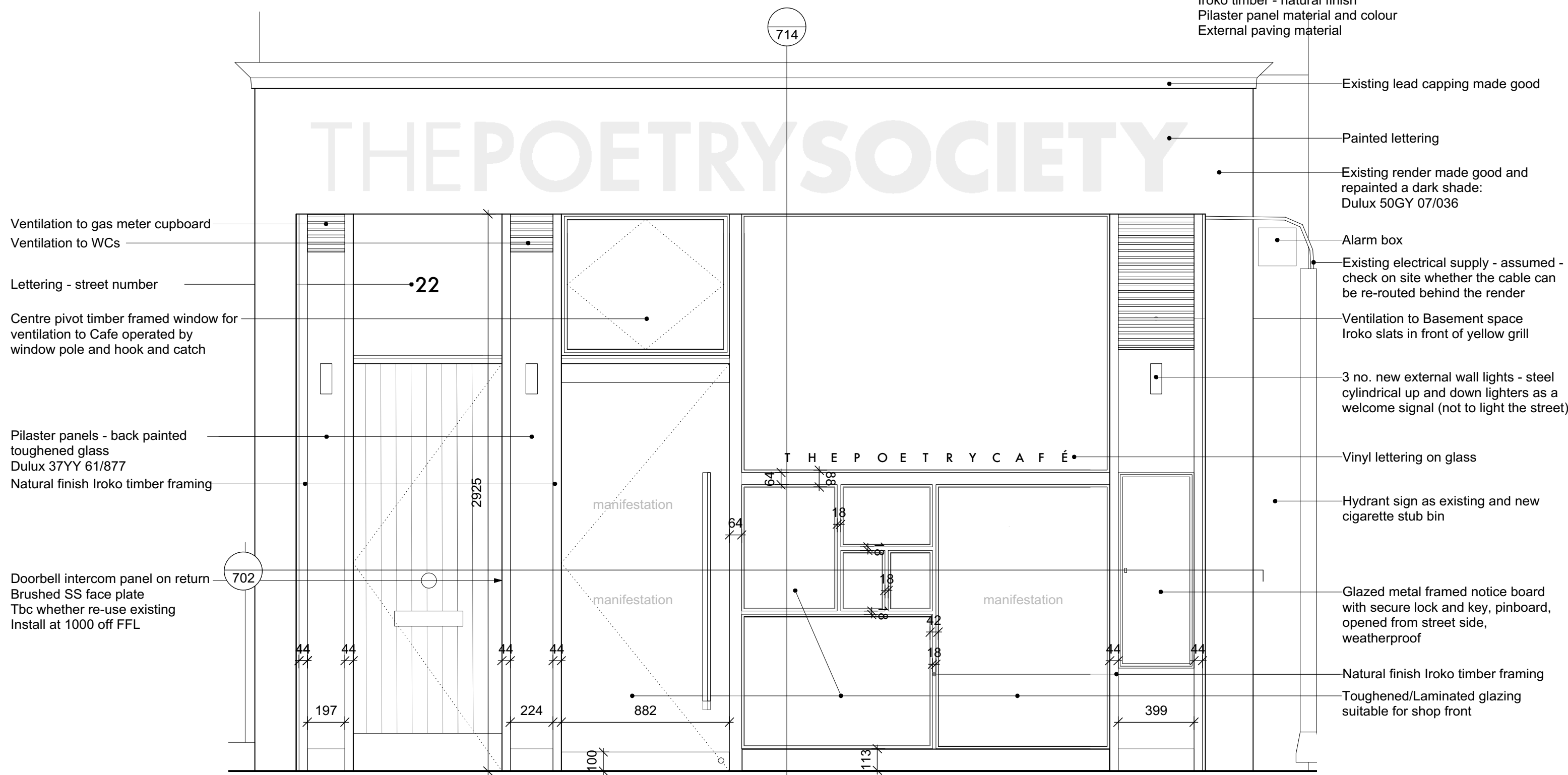


Notes

Materials samples/colours to be submitted:
 Painted render colour
 Iroko timber - natural finish
 Pilaster panel material and colour
 External paving material

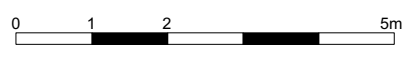


Ventilation to gas meter cupboard
 Ventilation to WCs
 Lettering - street number
 Centre pivot timber framed window for ventilation to Cafe operated by window pole and hook and catch
 Pilaster panels - back painted toughened glass
 Dulux 37YY 61/877
 Natural finish Iroko timber framing
 Doorbell intercom panel on return
 Brushed SS face plate
 Tbc whether re-use existing
 Install at 1000 off FFL

Existing lead capping made good
 Painted lettering
 Existing render made good and repainted a dark shade:
 Dulux 50GY 07/036
 Alarm box
 Existing electrical supply - assumed - check on site whether the cable can be re-routed behind the render
 Ventilation to Basement space
 Iroko slats in front of yellow grill
 3 no. new external wall lights - steel cylindrical up and down lighters as a welcome signal (not to light the street)
 Vinyl lettering on glass
 Hydrant sign as existing and new cigarette stub bin
 Glazed metal framed notice board with secure lock and key, pinboard, opened from street side, weatherproof
 Natural finish Iroko timber framing
 Toughened/Laminated glazing suitable for shop front

DG1
 Solid T&G faced unfinished natural Iroko timber door
 Brushed SS knob, Secure lock
 Brushed SS 360w letter plate and indoor flap
 Brushed SS kick plate

DG2
 Frameless glass door closer and stand open
 Brushed SS hinges
 SSS top rail and bottom rail with dead bolt lock
 secure lock Iroko timber shaped bar handle



Poetry Society Offices and Poetry Café Ground Floor Elevation - Cafe Window

Mills Power

REVISIONS:
 A 12.10.16 ISSUED FOR PLANNING DISCUSSION
 B 14.10.16 REVISED AND SUBMITTED AS FURTHER INFO FOR PLANNING APPLICATION
 C 17.10.16 ISSUED FOR AGREEMENT OF JOINERY DETAILS
 E 01.11.16 ISSUED FOR PLANNING APPLICATION

NOTES:
 DO NOT SCALE FROM THIS DRAWING
 ALL DIMENSIONS TO BE VERIFIED ON SITE

ASSEMBLY
 1:20 @ A3
 www.millspower.com

POETRY SOCIETY
 049-721
 10 Aumonier Mews N2 9FA 02084441699