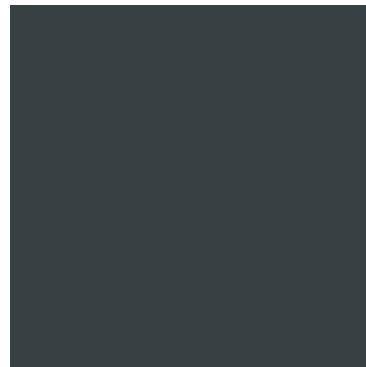


Note

Be aware that scanning and printing processes distort the colours. Refer to actual material for accurate colour.

Front facade Materials



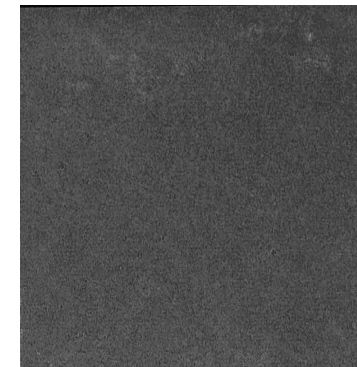
Painted render: Black/Blue,
Dulux 50Bg 06/044



Back Painted toughened
glass: Yellow,
Dulux 50 GY 07/036



Window Frame and Doors:
Iroko natural finish unsealed



Front pavement:
Primaporcelain
Stoneware Graphite 20mm