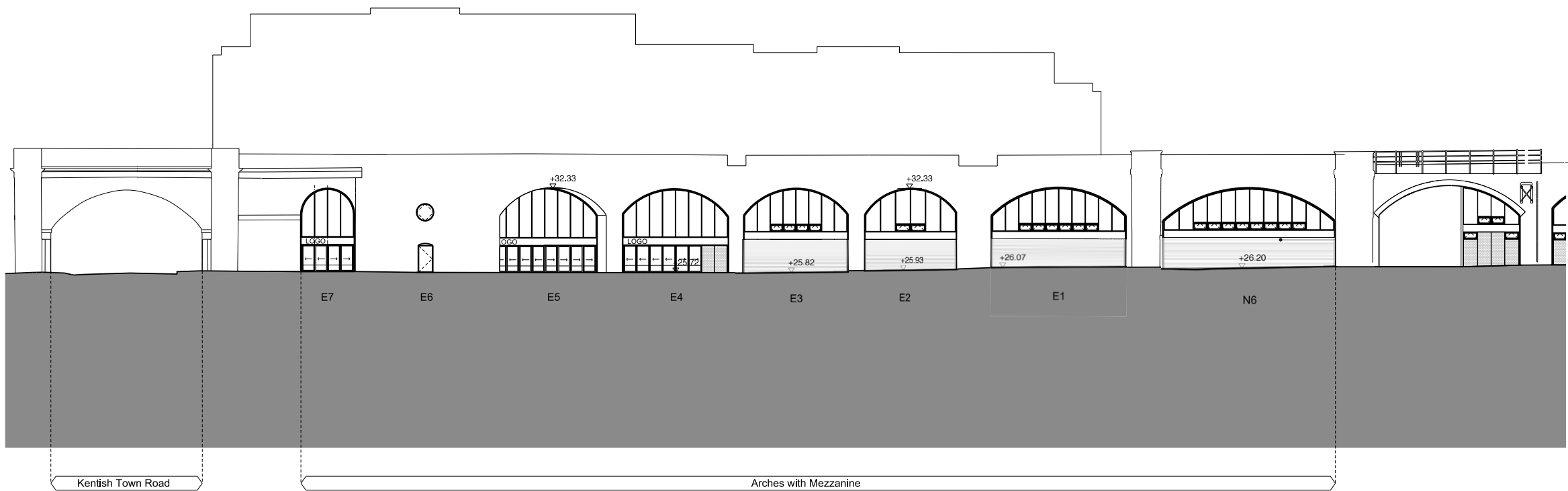
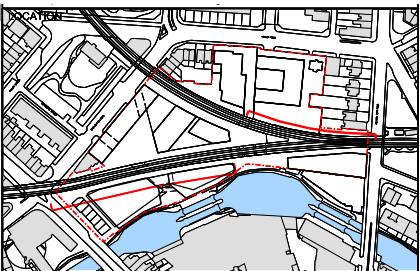


5.0 Viaduct Arches (Building V)

5.1 Permitted NMA Scheme

- Area B Arches

**ALLFORD HALL MONAGHAN MORRIS**  
 ARCHITECTS LTD  
 2ND FLOOR, BLOCK C, 5-23 OLD STREET LONDON EC1V 9HL  
 TEL 020 7251 5261 FAX 020 7251 5123 WEB WWW.AHMM.CO.UK

Job title  
 CAMDEN LOCK VILLAGE

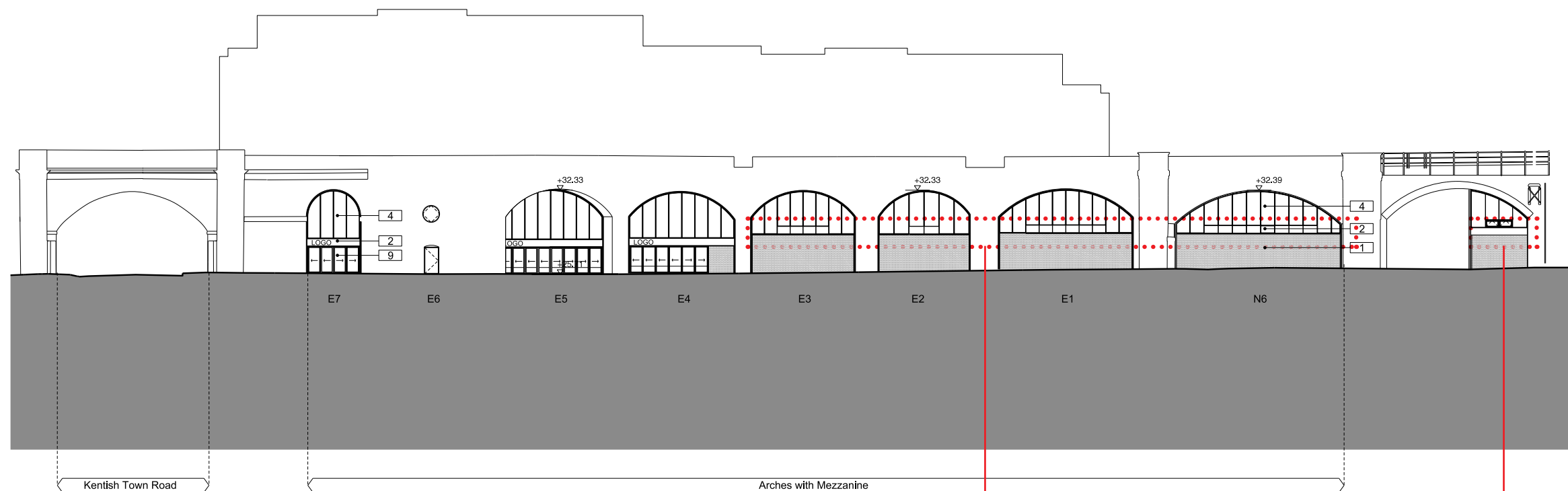
drawing title / location  
 PROPOSED MASTERPLAN ELEVATION - VIADUCT 5 (N-N-E)

drawn by DC	checked WL	scale 1:200@A1; 1:400@A3	status PLANNING
project 14045	zone MP	source [00]	drawing no. revision 209 A

## 5.0 Viaduct Arches (Building V)

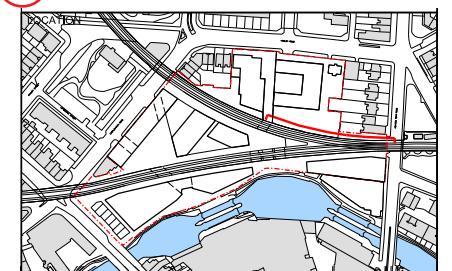
### 5.2 Revised Scheme

#### - Area B Arches



#### Revisions

- 1 Lower windows omitted due to clash with services internally
- 2 Hawley School requested us to omit opening lights to arches backing onto the school playground. We have therefore simplified the facade design, omitting the service zone within the brick facade and incorporated it within the opaque glazed curtain wall infill in lieu of the opening lights.



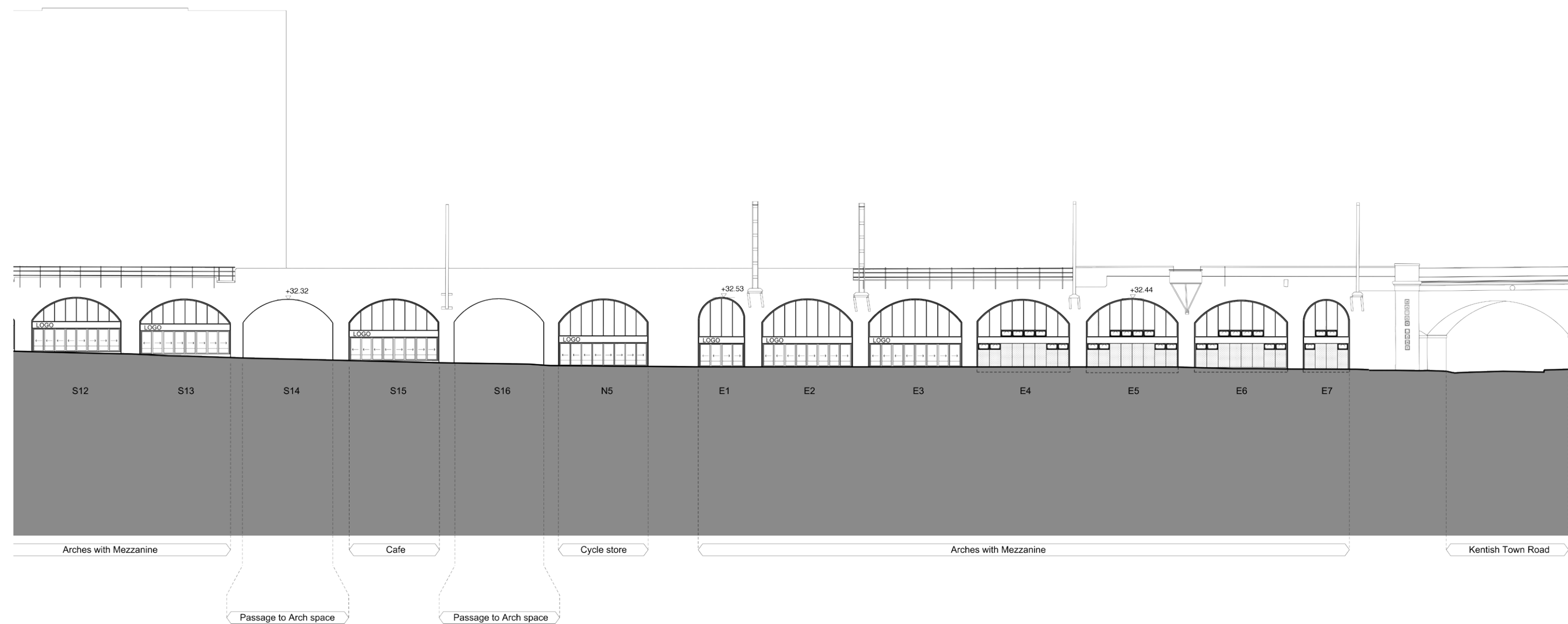
<b>ALLFORD HALL MONAGHAN MORRIS</b>				
ARCHITECTS LTD 2ND FLOOR, BLOCK C, 5-23 OLD STREET LONDON EC1V 9HL TEL 020 7251 5261 FAX 020 7251 5123 WEB WWW.AHMM.CO.UK				
Job title CAMDEN LOCK VILLAGE SITE				
drawing title / location PROPOSED MASTERPLAN ELEVATION - VIADUCT 5 (N-N-E)				
drawn by DC	checked WL	scale 1:200@A1; 1:400@A3	status PLANNING	
project 14045	zone MP	type [00]	drawing no 209	revision B

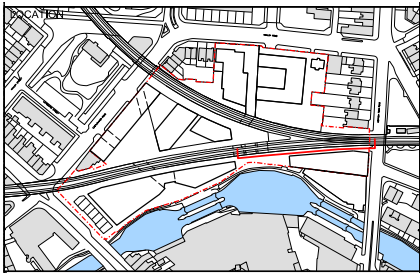
T02

5.0 Viaduct Arches (Building V)

5.3 Permitted NMA Scheme

- Area D Arches





**ALLFORD HALL MONAGHAN MORRIS**  
ARCHITECTS LTD  
2ND FLOOR, BLOCK C, 5-23 OLD STREET LONDON EC1V 9HL  
TEL 020 7251 5261 FAX 020 7251 5123 WEB WWW.AHMM.CO.UK

Job title  
CAMDEN LOCK VILLAGE

drawing title / location  
PROPOSED MASTERPLAN ELEVATION - VIADUCT 2 (S-S-E)

drawn by	checked	scale	status
DC	WL	1:200@A1; 1:400@A3	PLANNING

project	zone	source	classification	drawing no.	revision
14045	MP		[00]	206	A