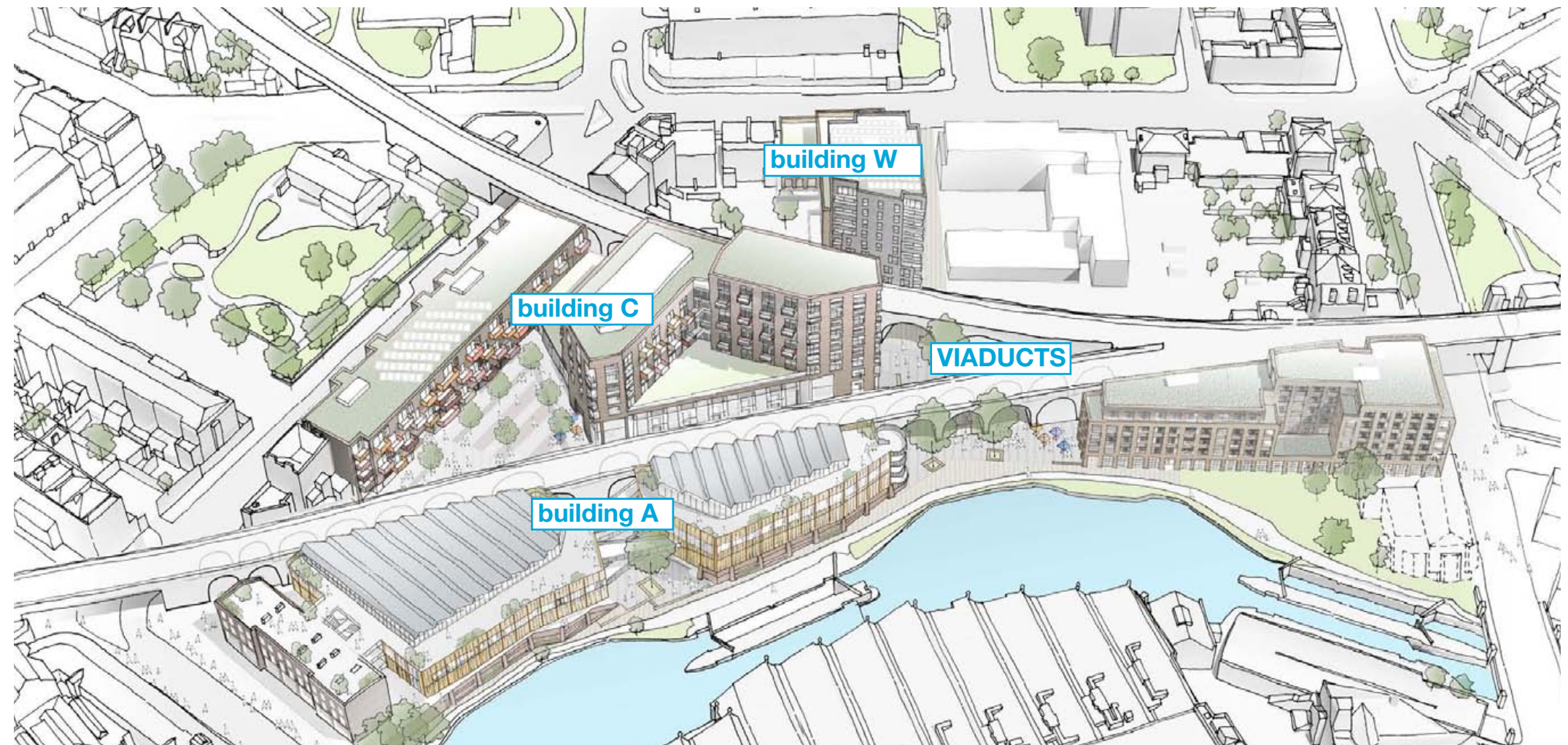


# Hawley Wharf

## Masterplan - Buildings A, C, WX & The Viaduct Arches

### Non-material Amendments - R022

2 November 2016



**ALLFORD  
HALL  
MONAGHAN  
MORRIS**

Document Control	
Job Title:	Camden Lock Village
Job number:	14045
Report title:	Masterplan Non-material amendments
Report number:	R022
Revision:	01
Date of issue:	2 November 2016
Purpose of issue:	Planning NMA Application
Compiled by:	Michelle Price - AHMM Nick Lambert- AHMM Architects Keval Patel- AHMM Architects Jazmin Rogers - AHMM Architects
Reviewed by:	Anita Howard - AHMM Architects Kevin Hong - AHMM Architects
Date reviewed:	October 2016
File name/ location	I:\AHMM Images 2014\14045 Camden Lock Masterplan - Build\5.0 Reports\Z\R022_Z_Final NMA Report

# Contents

1.0	Executive Summary	page 3
2.0	Area A - building A	page 5
3.0	Area B - building W	page 31
4.0	Area C - building C	page 39
5.0	The Viaduct Arches	page 45

## 1.0 Executive Summary

This document has been prepared in support following meetings with the planning officer at Camden London Borough Council agreeing to changes which can be considered as a Non-material amendment.

The enclosed changes follow on from an approved Non-material amendment, reference 2015/4330/P (granted 01/10/2015).

Please note the original planning permission to areas A, B and C of the masterplan permitted under planning application reference 2012/4628/P (granted 23/1/2013).

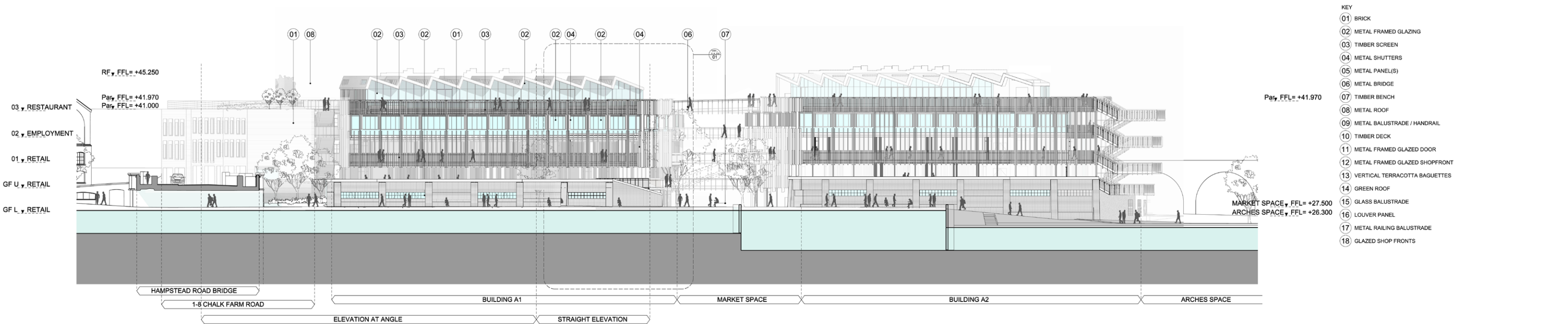


2.0 Area A - Building A

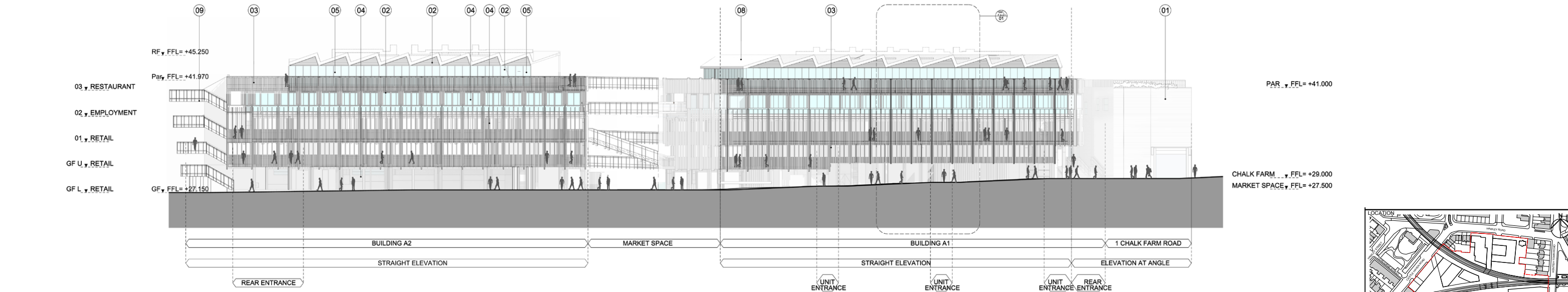


2.0 Building A

2.1 Permitted NMA Scheme



01 SOUTH ELEVATION AA



02 NORTH ELEVATION BB

LOCATION

ALLFORD HALL MONAGHAN MORRIS

ARCHITECTS Ltd  
5-23 OLD STREET, LONDON, EC1V 9HL  
TEL 020 7251 5261 FAX 020 7251 5123 WEB WWW.AHMM.CO.UK

job title  
CAMDEN LOCK VILLAGE

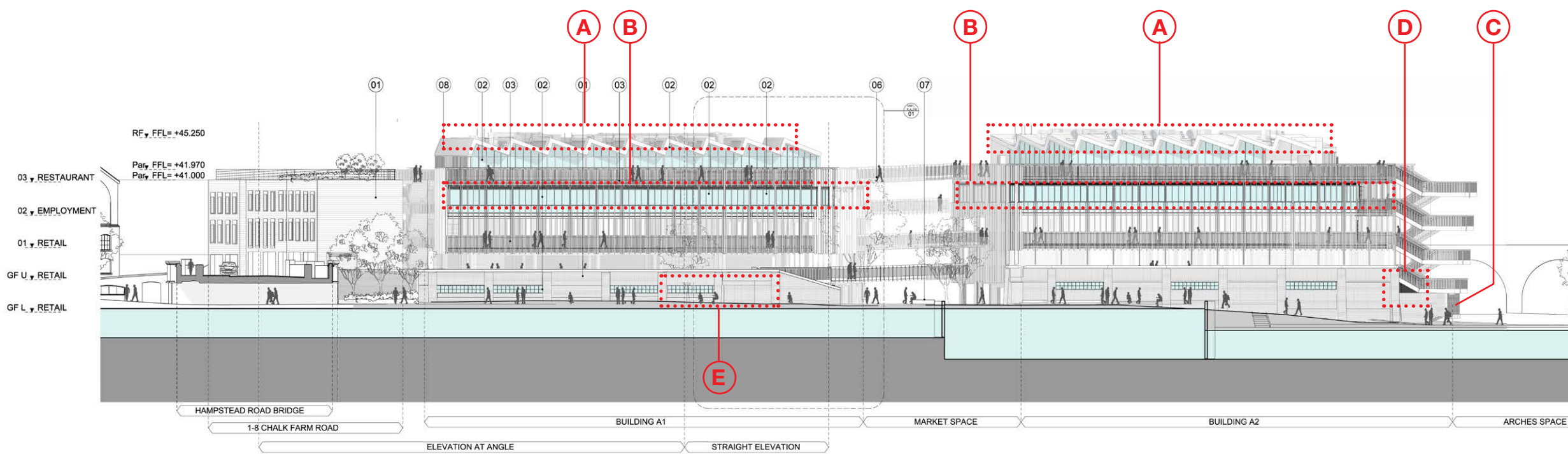
drawing title / location  
Building A Elevations

drawn by LL	checked LMD	scale 1 : 250 @ A1	status DRAFT
project 14045	drawing no. AX_(00)_ 2050	revision T02	

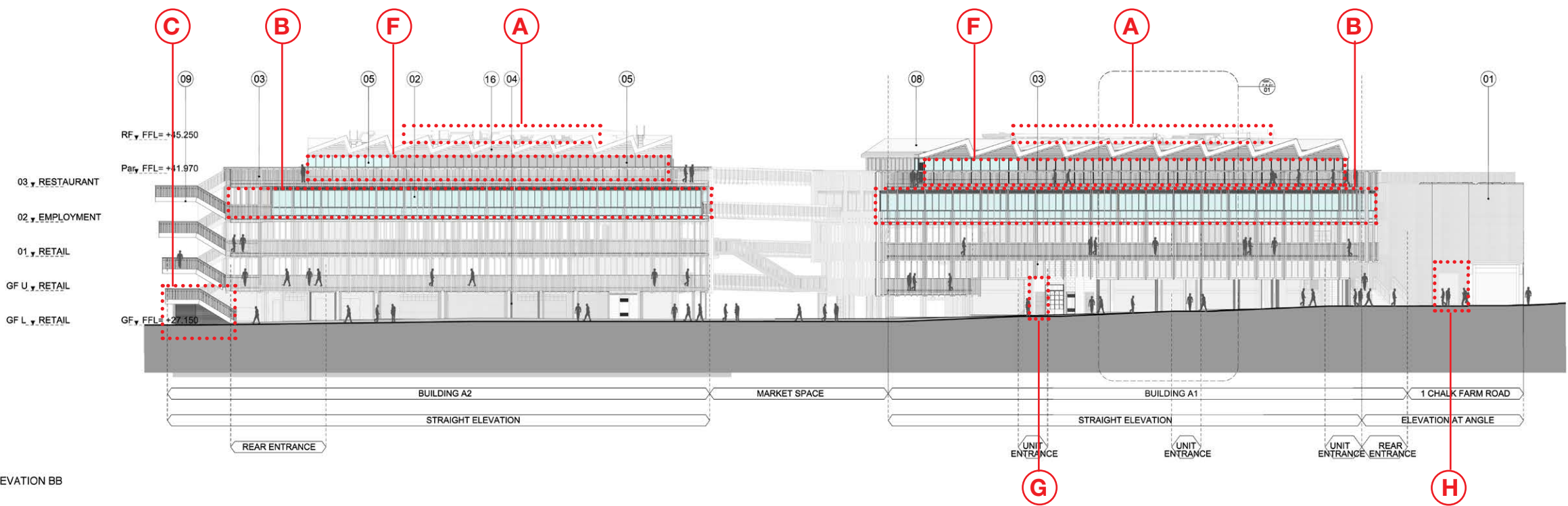
2.0 Building A  
2.2 Revised Scheme

Revisions

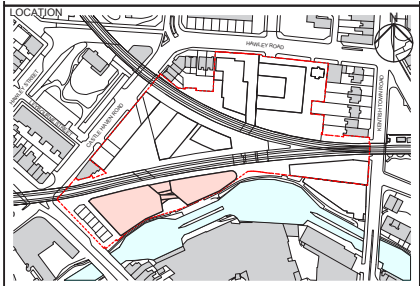
- A Rooftop Plant no longer requires chimneys
- B Omission of external shutters on second floor - refer to 2.13-2.23.
- C UKPN room enclosure to be louvred on east and north elevations
- D UKPN room requires louvres on south elevation
- E Canal Wall Window included in previous NMA relocated
- F Solidity of north facade increased on third floor restaurants, where plant and kitchens are expected to be located.
- G Ventilation shaft relocated adjacent to core 02
- H Additional fixed window (shown as door in previous NMA)



01 SOUTH ELEVATION AA



02 NORTH ELEVATION BB



ALLFORD HALL MONAGHAN MORRIS				
ARCHITECTS Ltd 5-23 OLD STREET, LONDON, EC1V 9HL TEL 020 7251 5261 FAX 020 7251 5123 WEB WWW.AHMM.CO.UK				
job title CAMDEN LOCK VILLAGE				
drawing title / location Building A Elevations				
drawn by LL	checked LMD	scale 1 : 250 @ A1	status DRAFT	
project 14045		drawing no. AX_(00)_ 2050		revision T03



2.0 Building A

2.3 Permitted NMA Scheme



Not to Scale