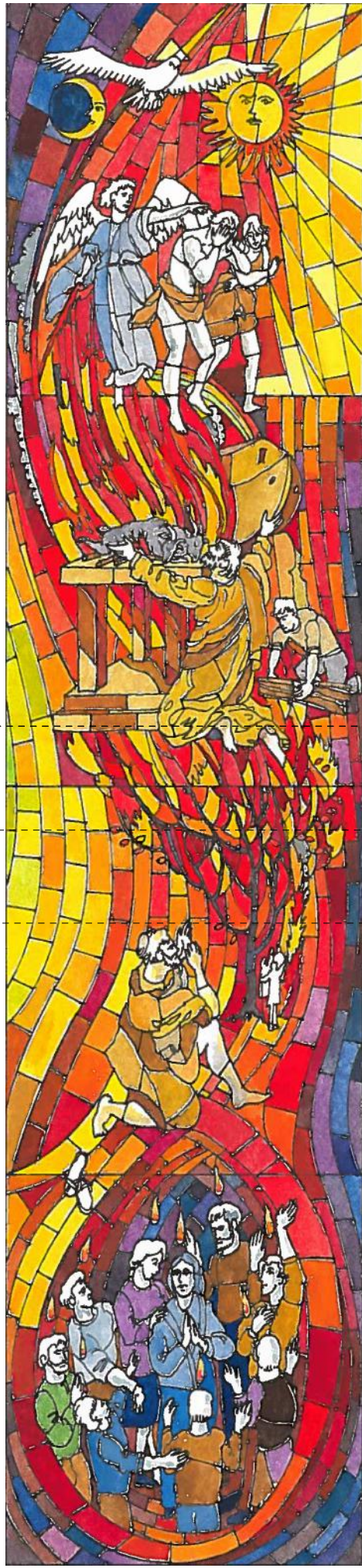


SG 8.00

1360 Structural Opening

5485 Structural Opening

Inner leaf to be Etched Glass



FFL +69.025

Floor slab

Suspended ceiling

Thermally broken aluminium frame with double glazing. Polyester power coated, colour to be RAL 7016.

Stained glass elements to be encapsulated into double glazed unit. Design and execution of the stained glass elements by specialist artist.

Fire Rating: N/A  
Window u-value to achieve 1.5 w/m<sup>2</sup> K

SG 9.00

685 Structural Opening

1135 Structural Opening



Thermally broken aluminium frame, polyester powder coated with double glazing. Colour to be RAL 7016.

Stained glass elements to be encapsulated into double glazed unit. Design and execution of the stained glass elements by specialist artist.

Fire Rating: N/A  
u-value min 1.5W/m<sup>2</sup>K

# CONSTRUCTION

<b>Kyle Smart Associates</b> Chartered Architects & Building Consultants The Barn, ButchersWick, Sewell, Nr Dunstable, BedfordshireLU6 1RP e-mail: <a href="mailto:KyleSmart@KyleSmartAssociates.co.uk">KyleSmart@KyleSmartAssociates.co.uk</a> Tel: 01582 690222			
Project Title		St Thomas More Church	
Drawing Title		Stained Glass design	
Drawing No.		13020 wd3.21	Rev -
Scale	Date	Drawn By	Checked By
1:20@A3	Nov-16	SG	CS