

W0004997

ENTERPRISE
THE GEORGE

THE STRAND
LONDON

27 10 16 dr
Rev A - 02 11 16 dr
Rev B - 04/11/16gs

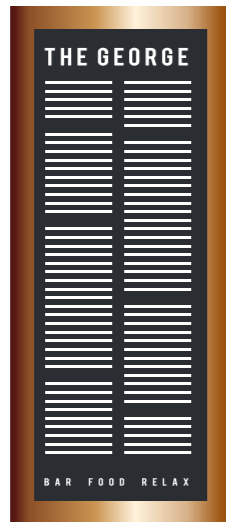


Insignia

insigniasigns.biz
0113 243 8533
frank@insigniasigns.biz
amanda@insigniasigns.biz

Sign A - Existing letters to remain.

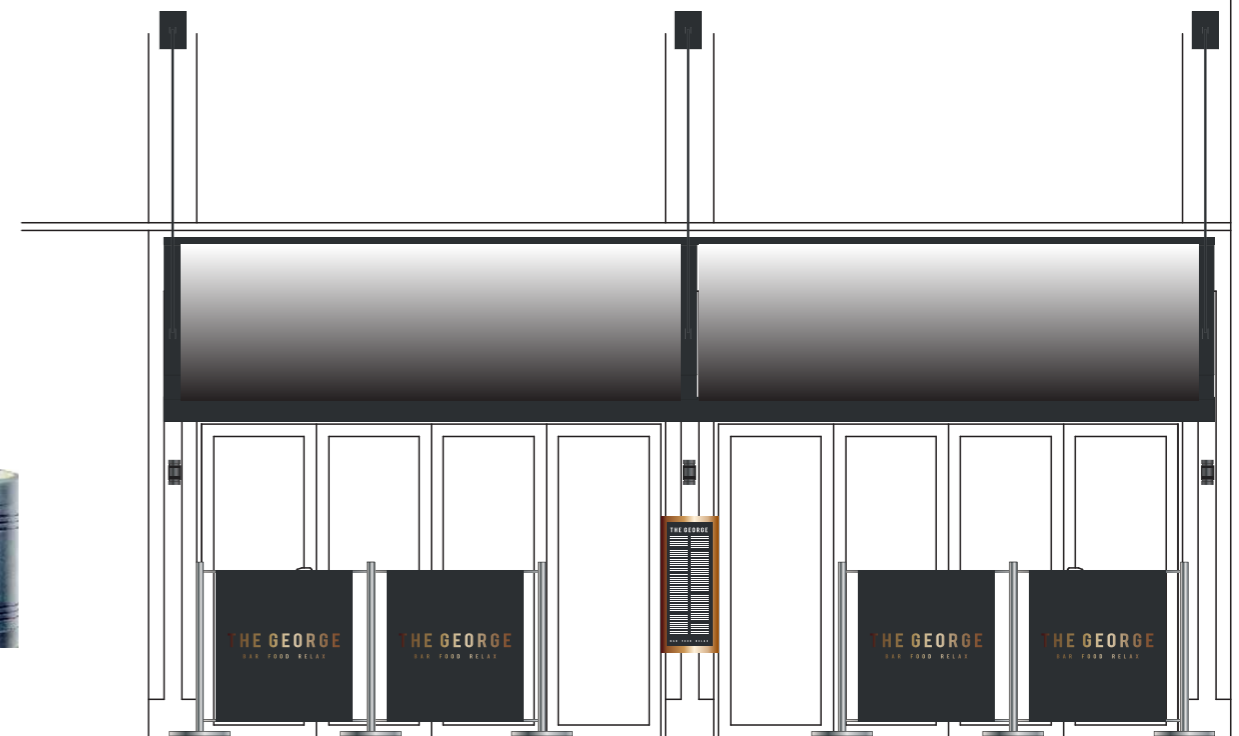
Sign B - Scale 1:20



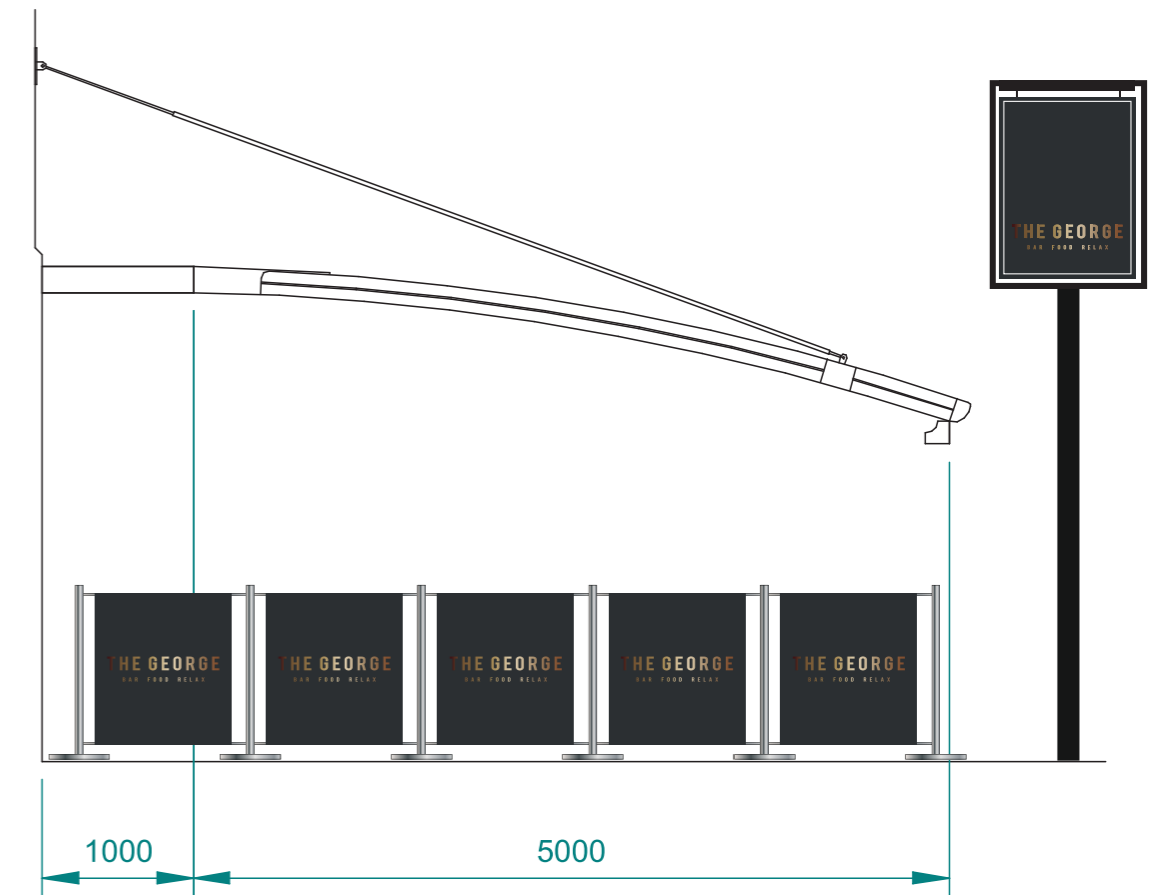
Sign C - Scale 1:20



Sign D - Scale 1:10



Front Elevation - Scale 1:50



Sign G - Scale 1:20



- Sign A - Existing letters to remain
- Sign B - One copper finished half A1 menu unit. 380 x 942mm.
- Sign C - One new double sided aluminium pictorial panel complete with new steel gibbet and post. Illuminated by led trough lights. 900 x 1200mm. O/A post height - 4500mm.
- Sign D - Three up down spot lights. 80 x 165 x 80mm.
- Sign E - One fabric covered canopy. Span 6950mm.
- Sign F - Nine Fabric street barriers. 900 x 1100, post heights - 1150mm.
- Sign G - One new aluminum A-board with vinyl display 900 x 1300mm

Sign F - Scale 1:10



NB Please always refer to actual paint references for accurate colour representations



Menu case/Lights



Sign Text/
Window Frames



Sign Colour

copy licence No. 100048453

All illuminated signage does not exceed 500cd/m2