

Winscombe Street Terraces - Existing Condition



1. Detached Listed Terrace

The Grade 2 listed terrace of 5no. houses at the end of Winscombe St was designed by Neave Brown as a freestanding building. Its bold parred-down architectural appearance is distinct from its context and each end sits apart from neighbouring buildings.



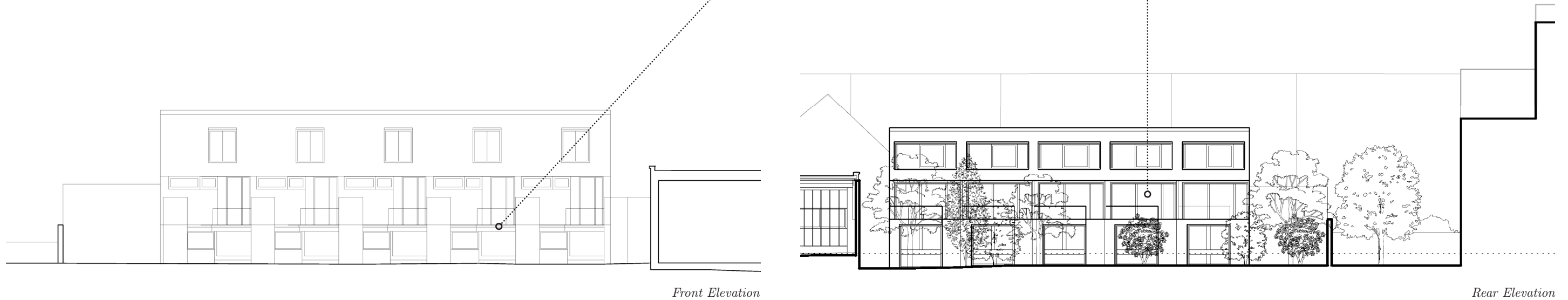
2. Raised entrance terrace

The entrance to each house is raised by several steps from the pavement to create a distinction between public street and private home.



3. Recessed loggias

Rear balconies overlook a shared garden. They are recessed into the building to offer a greater sense of privacy for residents, both from within the home and the garden.



Front Elevation

Rear Elevation