

PRELIM ISSUE

This drawing and any related notes are protected by copyright. To the extent that this is a design document it is, in addition, protected by design right. All rights in them are reserved. They are provided for your information only. No part of them or any design to which they relate may be reproduced in any form or by any means without the prior written permission of Fairview New Homes Limited, except as expressly permitted by law. The doing of any unauthorised act in relation to them may result in both a civil claim and criminal prosecution.

- NOTES:**
1. Concrete mix to be as per the engineers specification
 2. This drawing is to be read in conjunction with the fence specification
 3. All ironmongery applicable to the gate is to be G.M.S.
 4. All timber to be supplied as the specification
 5. Timber cut on site is to be treated with a preservative
 6. Refer to Structural Engineers 40 series drawings for retaining walls.
 7. Brick colour as per materials specification 10.5

Movement joints to be as follows :-

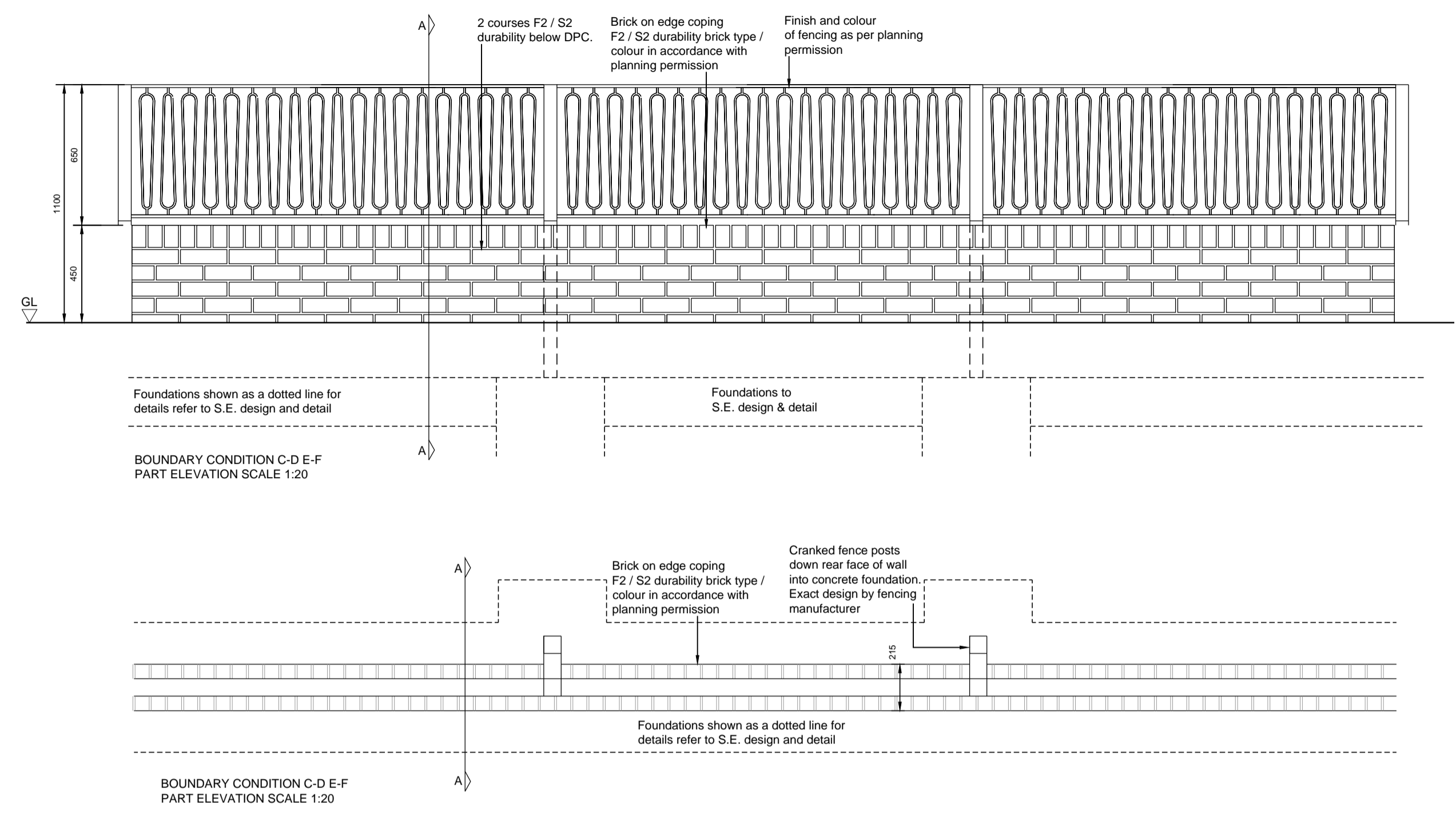
1. Clay bricks at wall junctions or every 8 metres, though not more than 6m from an end and 10mm wide. Joint to be open.
2. Calcium silicate bricks at wall junction or every 6 metres, though not more than 4.5m from an end and 10mm wide. Joint to be filled with Hydrocell and mastic sealed.
3. Concrete blocks/bricks and stone at wall junctions or every 6 metres, though not more than 3m from an end and 10mm wide. Joint to be filled with Hydrocell and mastic sealed.

All movement joints to be bridged by three No stainless steel slip ties (refer to GBG 19 and note below for spacing) and care to be taken in that only the correct movement joint and filler is incorporated. Movement joint to be continuous and not bridged by coping, tiles or DPC in any way.

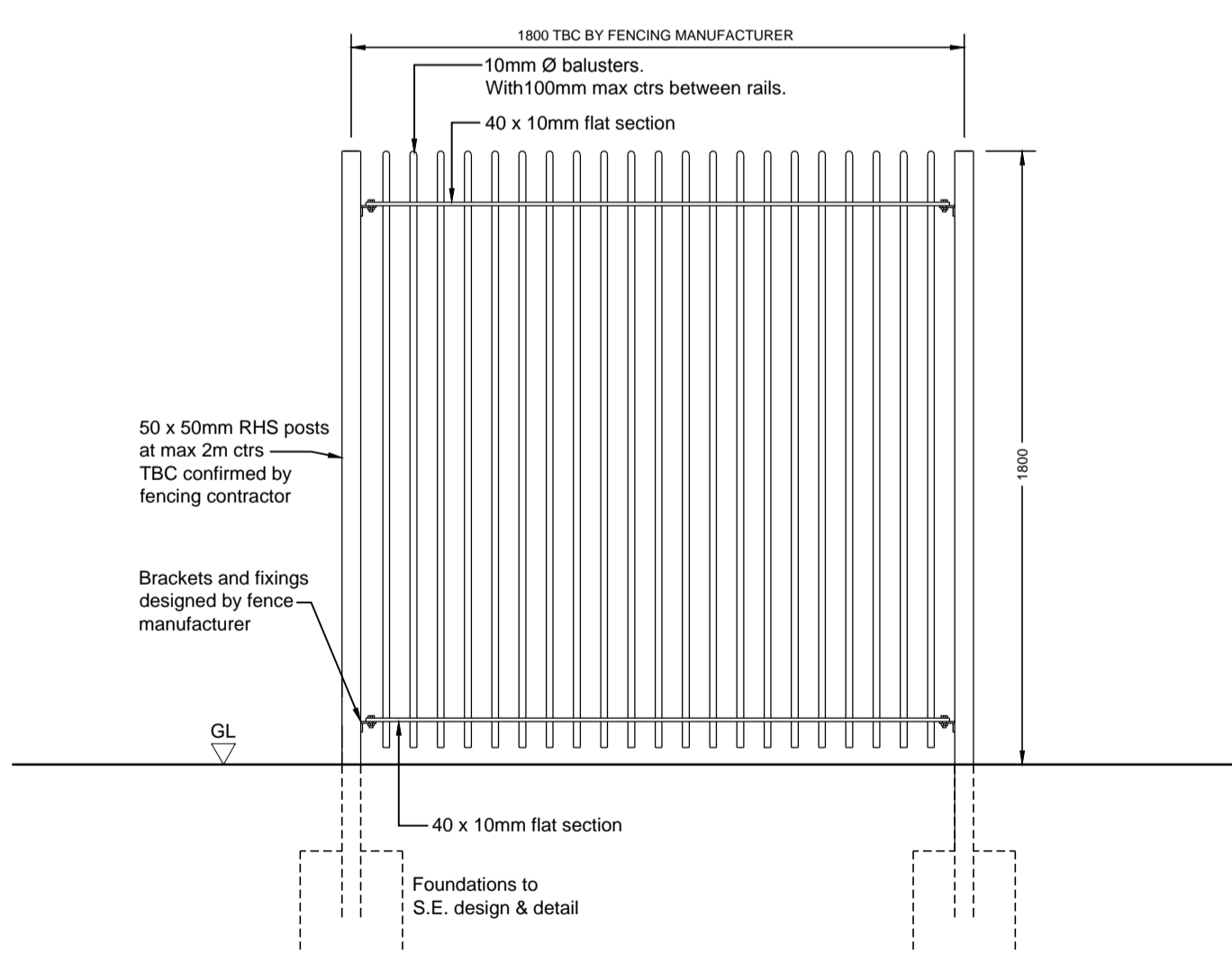
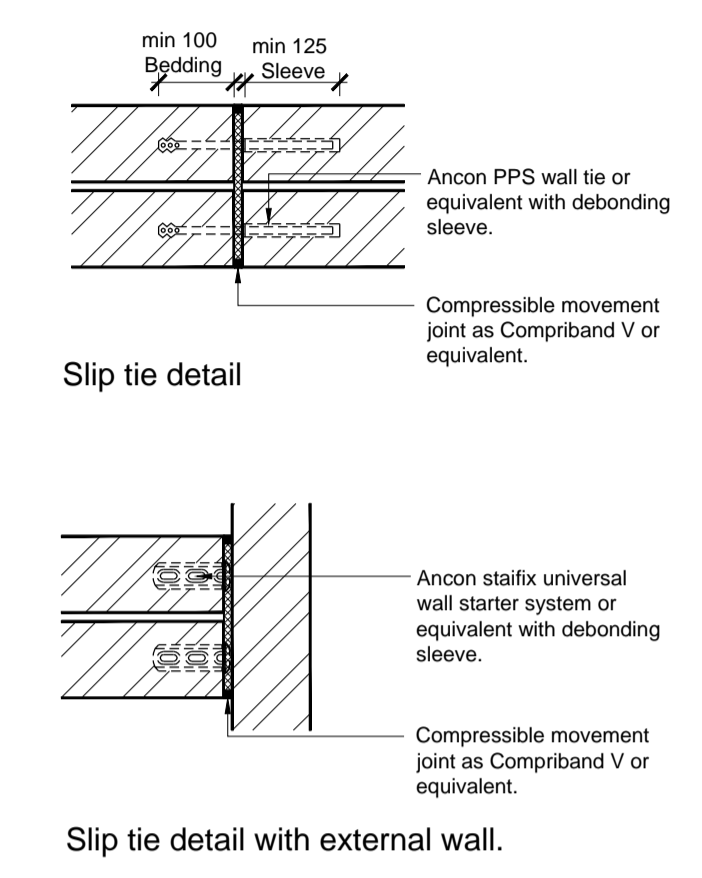
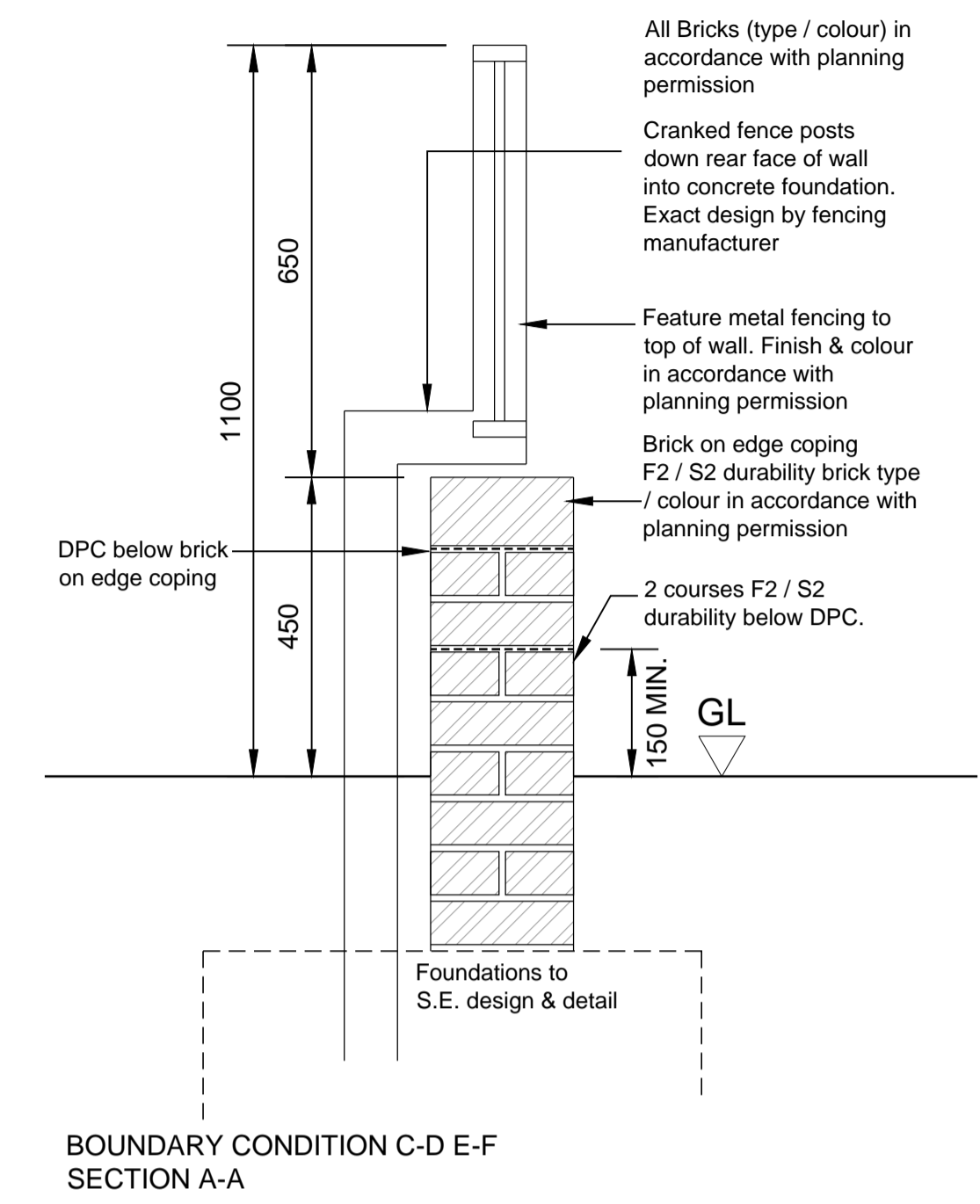
Positions of slip ties :-
Upper slip tie position (in mortar bed of the course below the dpc or bed of third course below the coping/capping. Position slip ties at courses nearest to 1/3 and 2/3 of the distance from ground level to upper slip tie. Add slip ties whenever a free standing wall abuts a building.

Mortar mix as follows :- refer to NHBC handbook Appendix 6.1-D or S.S of M&W for M.L.B.H pages 8/3 but in general to be: 1:0.5:4.5- cement (O.P.C. or sulphate resisting) : lime sand plus plasticiser as specified in GBG 14.

TO BE READ IN CONJUNCTION WITH CIVIL ENGINEERS SITE LAYOUT DRAWING FOR BOUNDARY TREATMENT LOCATIONS



BOUNDARY CONDITION C TO D & E TO F



BOUNDARY CONDITION F TO G

2A	ISSUED FOR PLANNING DISCHARGE	JJ	27.07.15
2	ISSUED FOR PRELIM CONDOC	CF	19.06.15

REV	BY	DATE
-----	----	------



Stanmore Business & Innovation Centre
Honeygot Lane | London | HA7 1BT
T: 0208 731 5210 | E: design@bm3.co.uk

For and on behalf of:
Fairview NEW HOMES Ltd.
Technical Department,
50 Lancaster Road, Enfield,
Middlesex EN2 0BY
Tel: 020-8366-1271
Fax: 020-8342-3861
E-mail: technical@fnhtd.co.uk

Drawn:	CF	Date:	18-06-2015	Scale:	VARIES @ A
Checked:	JJ	Approved:	JJ		Architectural

Title:

LAWN ROAD, BOUNDARY TREATMENTS

Project:
LAWN ROAD - BELSIZE PARK

Drawing Number:	FNH413-35.801	Rev:	2A
dwg:	FNH413 - DETAILS.dwg		A1