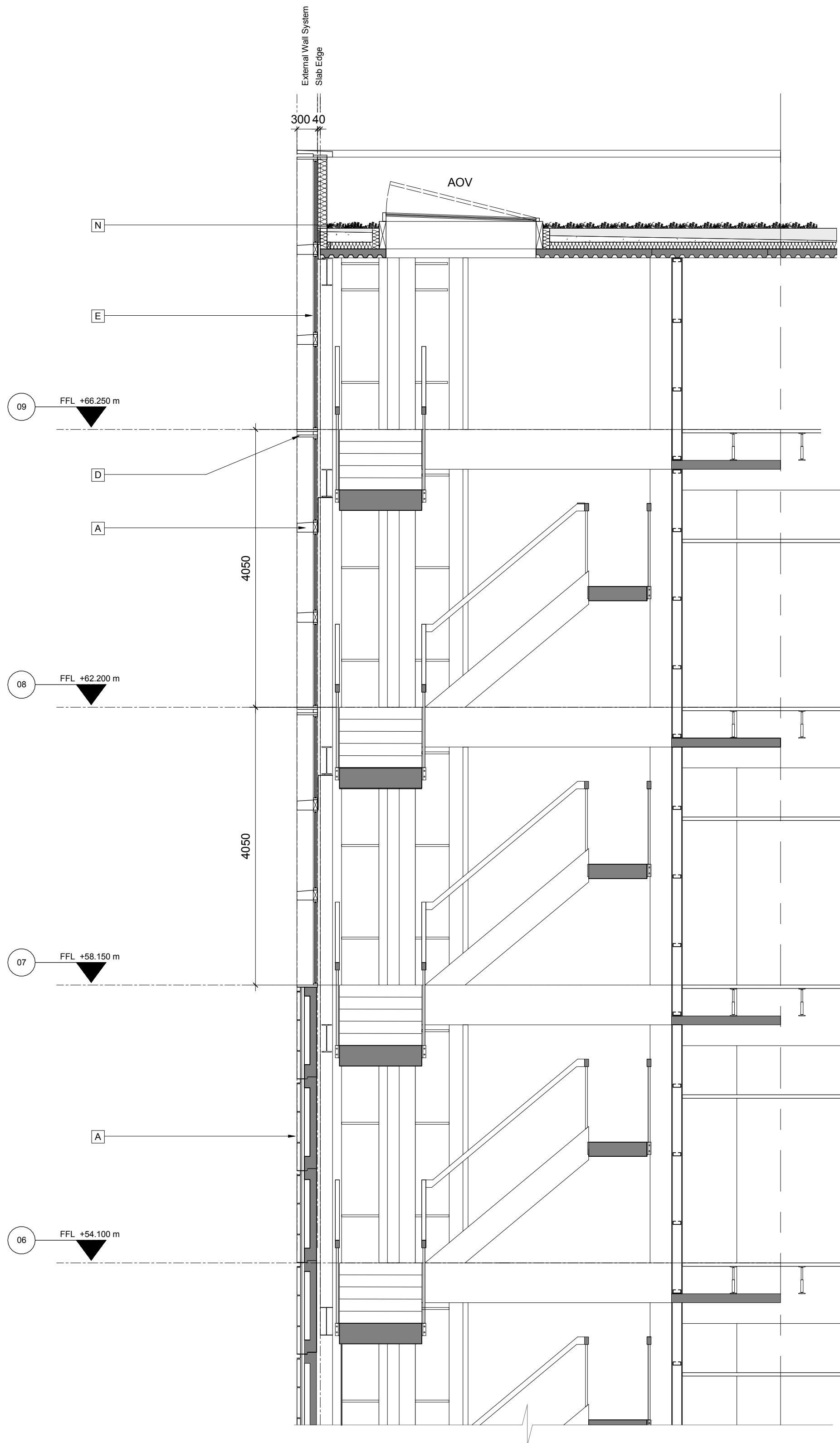
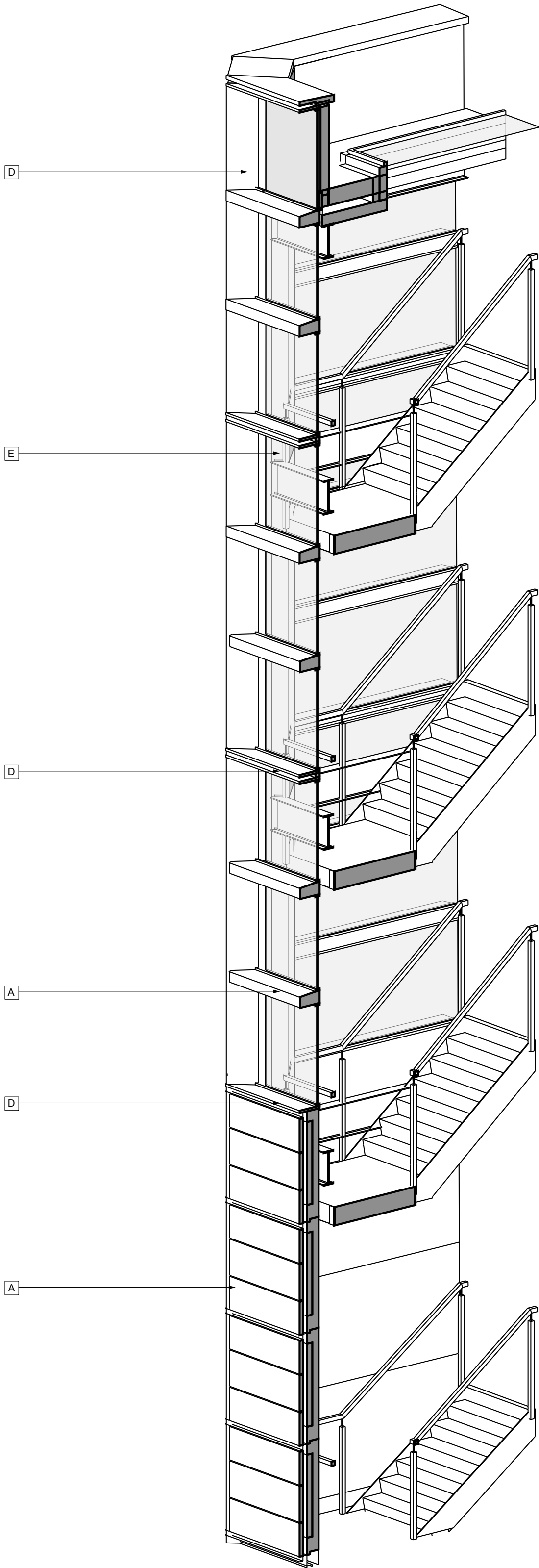


A1
1
2
3
4
5
6
7
8
9
10
11

A B C D E F G H I J K L M N

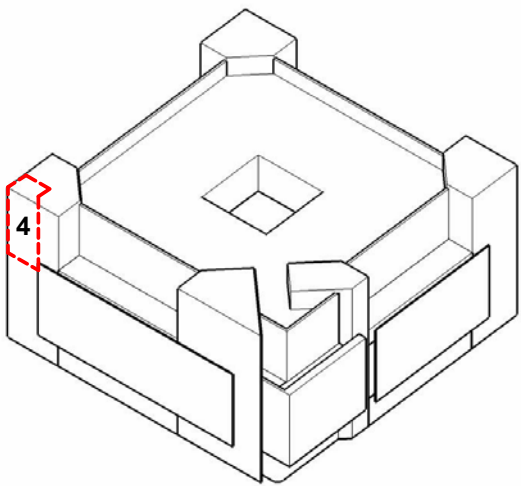


FIGURED DIMENSIONS ONLY TO BE USED

Safety, Health and Environmental Information
In addition to the hazards/risks normally associated with the types of work detailed on this drawing and noted in the designer risk assessments and health and safety plan, note the following:

- It is assumed that all works on this drawing will be carried out by a competent contractor working, where appropriate, to an approved method statement.
- Where applicable, significant residual risks are highlighted in the body of the drawing.

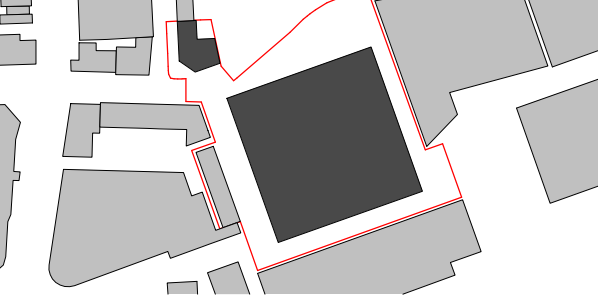
- Key
- Material Types:
- A Stone
 - B Metal and Glass Twin Screen
 - C Metal and Glass Screen
 - D Metal Outer Frame
 - E Glazed Facades
 - F Glazed Opaque Screen
 - G Glazed Panel
 - H Metal Fins
 - I Metal Louvres
 - J Back Painted Glass Spandrel
 - K Metal Soffit
 - L Existing Ventilation Duct
 - M Outer Frame
 - N Brown Roof



P01 13/10/16 Issued for Planning

Issue Date

Key Plan (NTS)



ARUP ASSOCIATES

8 Fitzroy Street
London
W1T 4BJ

tel: 020 7755 2525
fax: 020 7755 2561
email: info@arupassociates.com

Client

British Land Property Management Limited

Job Title

1 Triton Square and St. Anne's

Drawing Title

**1 Triton Square
Facade Detail
Core Extensions**

Scale at A1 1 : 50

Discipline Architecture

Job No 246868 Drawing Status Planning

Drawing No 246868-A_XX-XX-DR-AX-36704 Issue P01