

A1

A

B

C

D

E

F

G

H

I

J

K

L

M

N

1

2

3

4

5

6

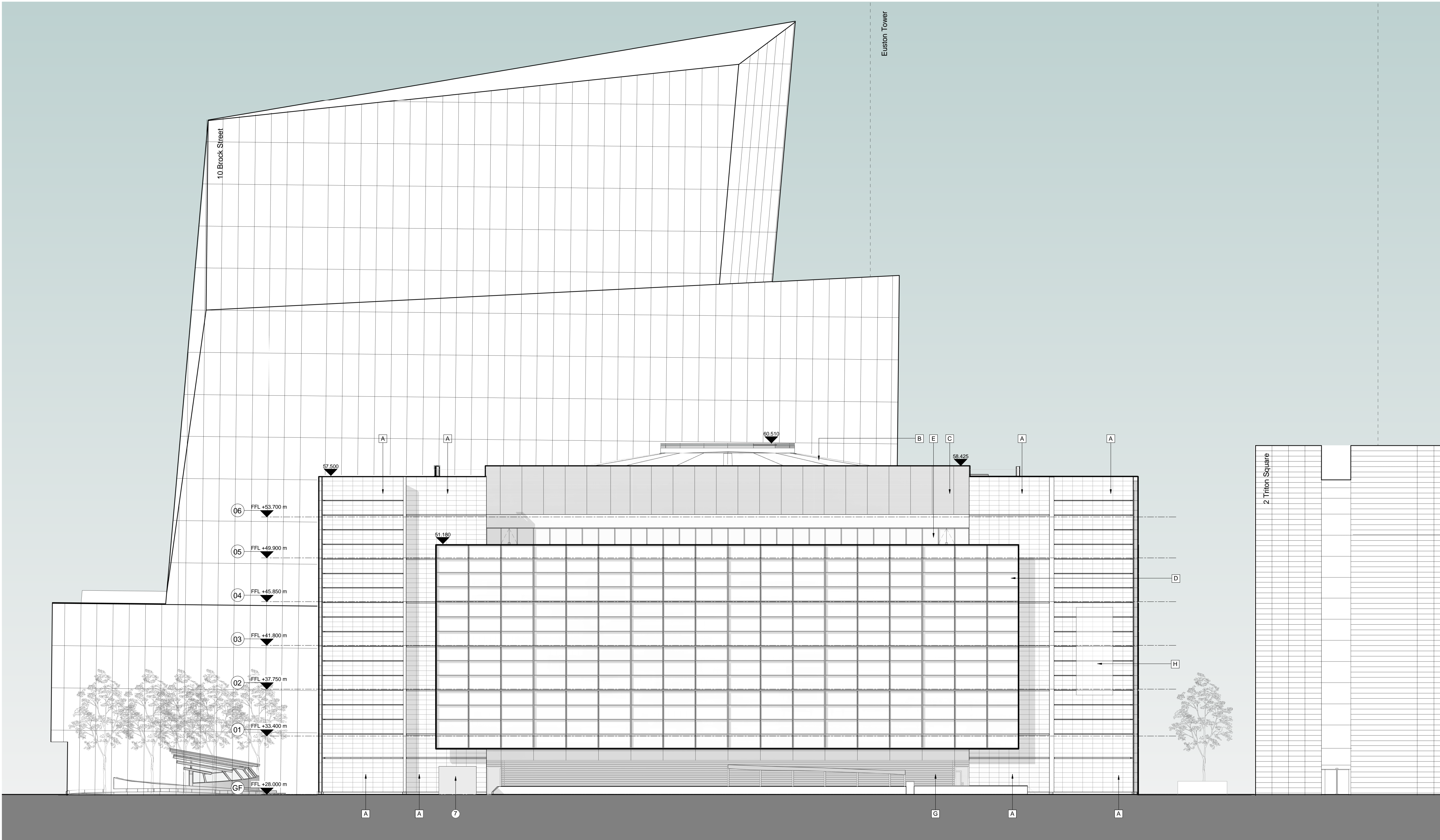
7

8

9

10

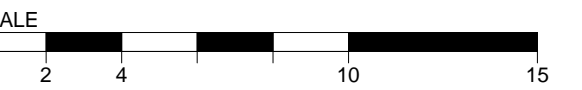
11



FIGURED DIMENSIONS ONLY TO BE USED

**Safety, Health and Environmental Information**  
In addition to the hazards/risks normally associated with the types of work detailed on this drawing and noted in the designer risk assessments and health and safety plan, note the following:

- It is assumed that all works on this drawing will be carried out by a competent contractor working, where appropriate, to an approved method statement.
- Where applicable, significant residual risks are highlighted in the body of the drawing.



Key

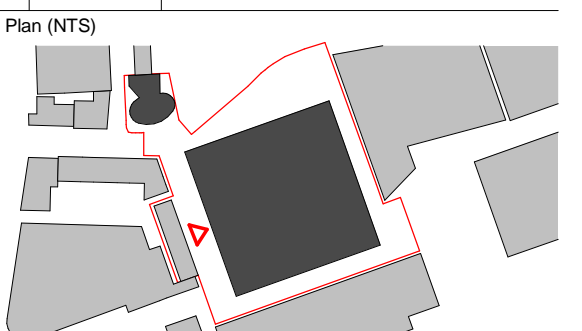
Material Types:

- [A] Stone
- [B] Metal and Glass Atrium Roof
- [C] Metal Plant Screen
- [D] Metal and Glass Twin Skin Facade
- [E] Glazed Facades
- [F] Glazed Ground Floor Facade
- [G] Metal Louvres
- [H] Urban Art

Building Entrances & Uses :

- ① Cut Through
- ② Office Entrance 1
- ③ Office Entrance 2
- ④ Office Entrance 3
- ⑤ Gym Entrance
- ⑥ Retail Entrance
- ⑦ Security - Check Point

Issue	Date	Issued for Planning
-------	------	---------------------



**ARUP ASSOCIATES**

6 Fitzroy Street  
London  
W1T 4BJ  
tel: 020 7755 2525  
fax: 020 7755 2561  
email: info@arupassociates.com

Client  
**British Land Property Management Limited**

Job Title  
**1 Triton Square and St. Anne's**

Drawing Title  
**1 Triton Square  
General Arrangement Elevations  
West Elevation  
Existing**

Scale at A1 1 : 200

Discipline Architecture

Job No 246868 Drawing Status Planning

Drawing No 246868-A\_A-XX-XX-DR-AX-10540 Issue P01