

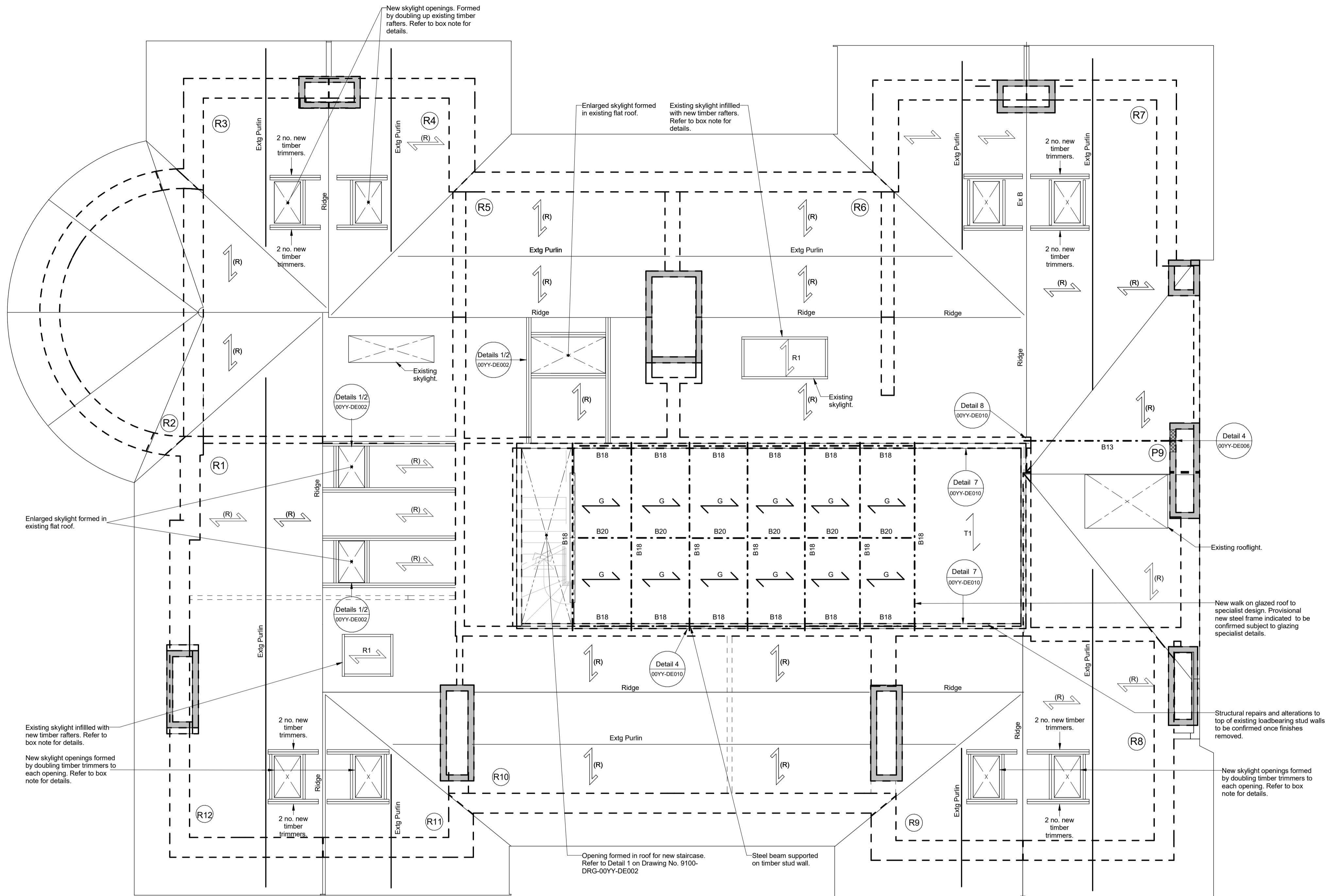
General Notes

1. Drawings shall be referred to for structural work only unless otherwise stated and read in conjunction with Architects, Service Engineer's and Sub-Contractor's drawings.
2. The Contractor shall check all levels and dimensions, any errors or omissions are to be reported at once to the Engineer.
3. Existing layouts and levels based upon Murphy's surveys information received to date (February 2016)
4. For Key and Member Schedules refer to drawing no. 9100-DRG-99YY-GN010.
5. For General Notes refer to drawing no. 9100-DRG-99YY-GN001.

NOTE
FOR BUILDERSWORK HOLES ASSOCIATED WITH NEW SERVICES REFER TO M & E DRAWINGS.

NOTE
ALL SERVICES SIZES AND POSITIONS ARE TO BE CONFIRMED BY THE ARCHITECT/M&E CONSULTANT PRIOR TO CONSTRUCTION.

NOTE
WHERE NEW OPENINGS ARE TO BE FORMED IN EXISTING ROOF ALLOW FOR DOUBLING UP EXISTING RAFTERS AND ADDING NEW TRIMMERS. ALLOW FOR 47x100 GRADE C24 SW TIMBERS FOR ALL NEW ELEMENTS WITH MAXI SPEEDY JOIST HANGERS UNLESS NOTED OTHERWISE.



REV	DATE	DESCRIPTION	BY	CHKD
B	03.08.16	Generic repair & generic detail references added. Updated to Architects latest G.A's & co-ordination discussions.	DA	TP
A	15.06.16	Repair Schedule, notes and locations added. Key and Intel schedules removed. General notes revised. Floor spans revised following site opening up works. Notes to existing Bressummer beam added.	DA	AT

FOR TENDER



Repair Detail	Circled Area Reference:	Provisional Structural Repair Allowance											
		R1	R2	R3	R4	R5	R6	R7	R8	R9	R10	R11	R12
Details 1/2 00YY-DE011	Allow for splice repair to end of timber rafters, re-supported off masonry wall. Timber to be isolated from external wall with dpm. Allow for No. of rafter repairs in each area as shown right.	3no.	13no.	5no.	12no.	10no.	3no.	4no.	4no.	5no.	7no.	4no.	8no.
Detail 3 00YY-DE004	Allow for removal of existing timber wall plate and make good with new brick. Allow for length of repair in each area as shown right.	1.5m	7.5m	2.0m	4.0m	3.6m	1.5m	1.6m	1.6m	2.0m	3.0m	1.6m	3.2m

NOTE
Allow for existing timber purlins to be stiffened with 100x100x10mm mild steel angle in 6No. locations. At each location allow for length of new angle to be 5.0m length, with M8 coachscrew fixings at 600mm c/c staggered each leg.

NOTE
Allow for purlin to hip connections to be enhanced in 12No. locations with new mild steel cleat. Refer to Details 4 and 5 on drawing No. 9100-DRG-00YY-DE011.

NOTE
PROVISIONAL REPAIR ALLOWANCES SHOWN ON THIS DRAWING WILL BE CONFIRMED FOLLOWING LIFTING OF FLOORBOARDS IN EACH AREA. ENGINEER TO INSPECT EACH FLOOR IN TURN AND CONFIRM EXTENT OF REPAIRS REQUIRED.

TITLE:
**Kidderpore Hall
Level RF Proposed Roof Plan**

PROJECT:
**Project No. 11581
Kidderpore Avenue**

SCALE: A1@ 1:50 DATE: April '16 DRAWN: DA CHKD: TP

DRG NO. REV.
9100-DRG-03KH-RF001 B

Tully De'Ath
consultants

Engineering at its Best

T: 01342 828 000
E: info@tullydeath.com
W: www.tullydeath.com