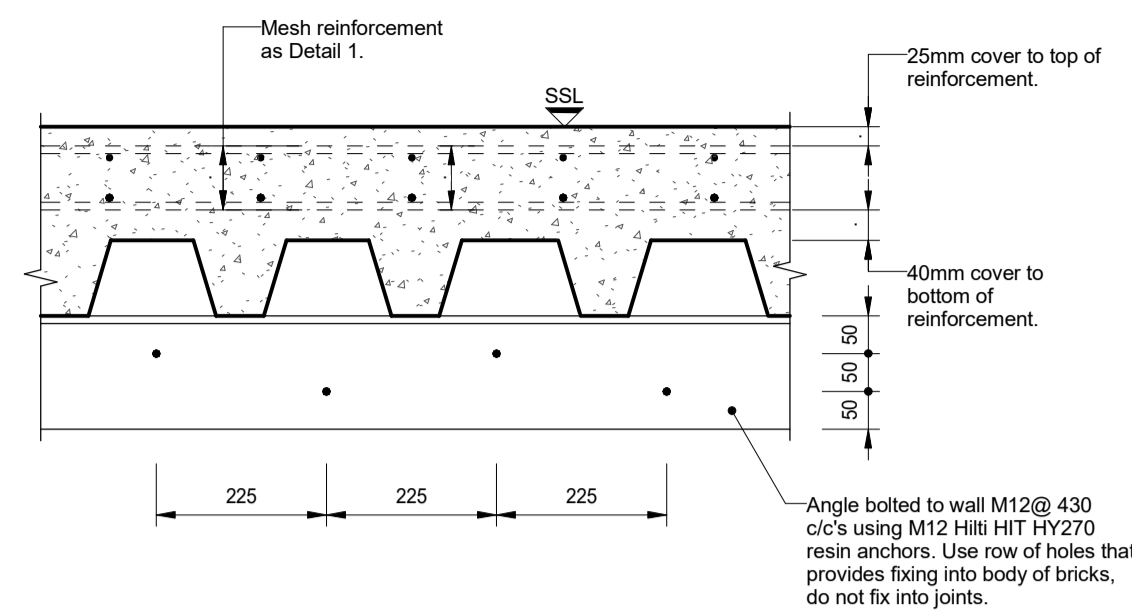
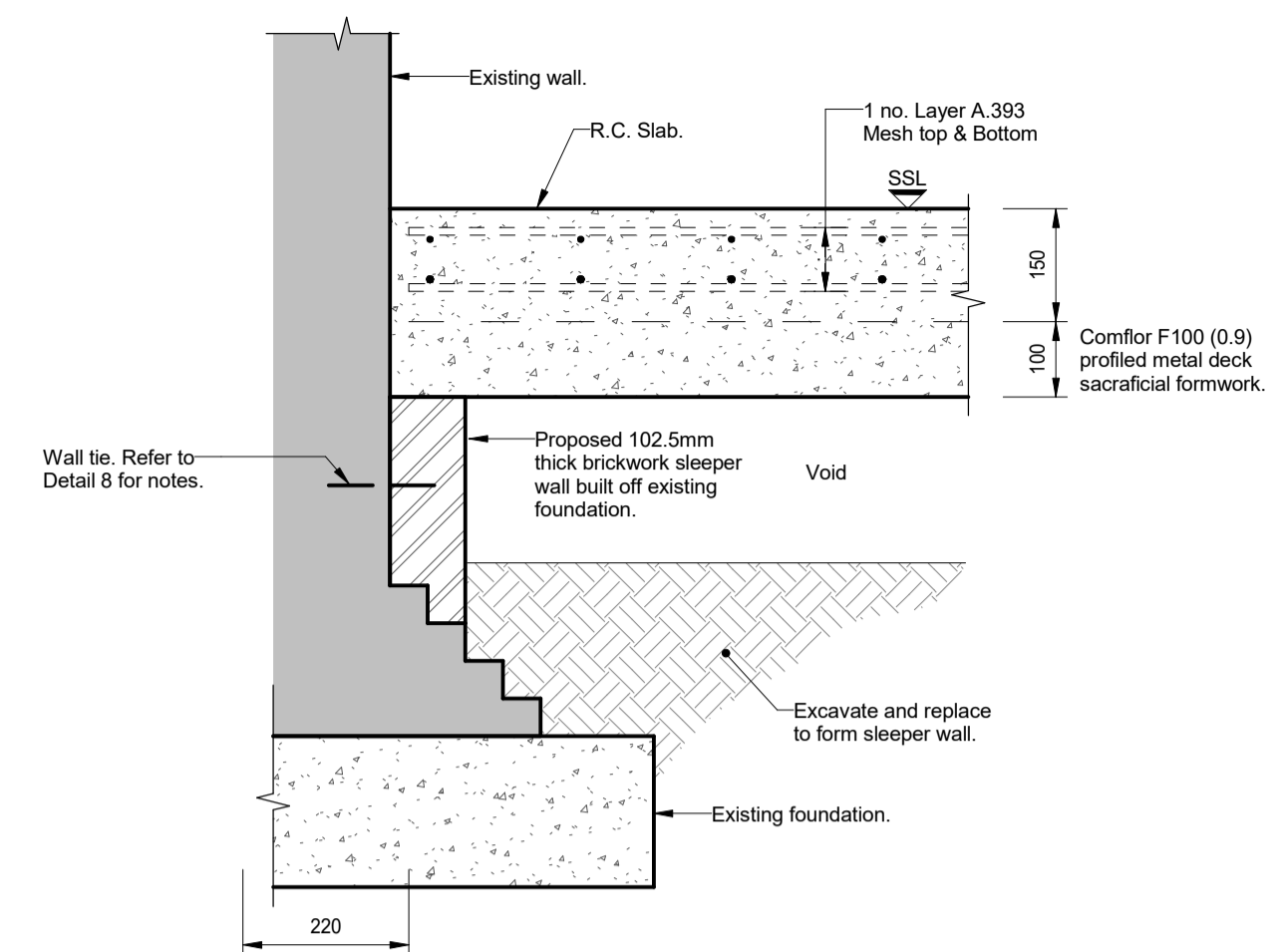


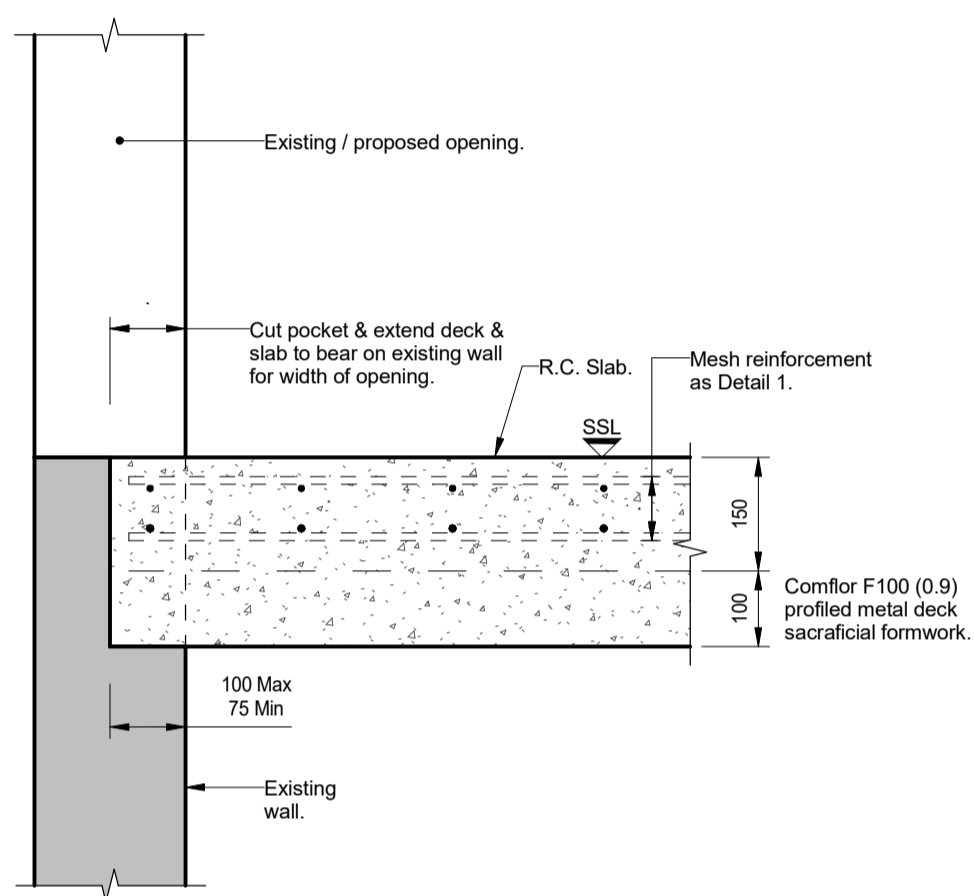
Detail 1: Typical End Bay Detail
scale 1 : 10



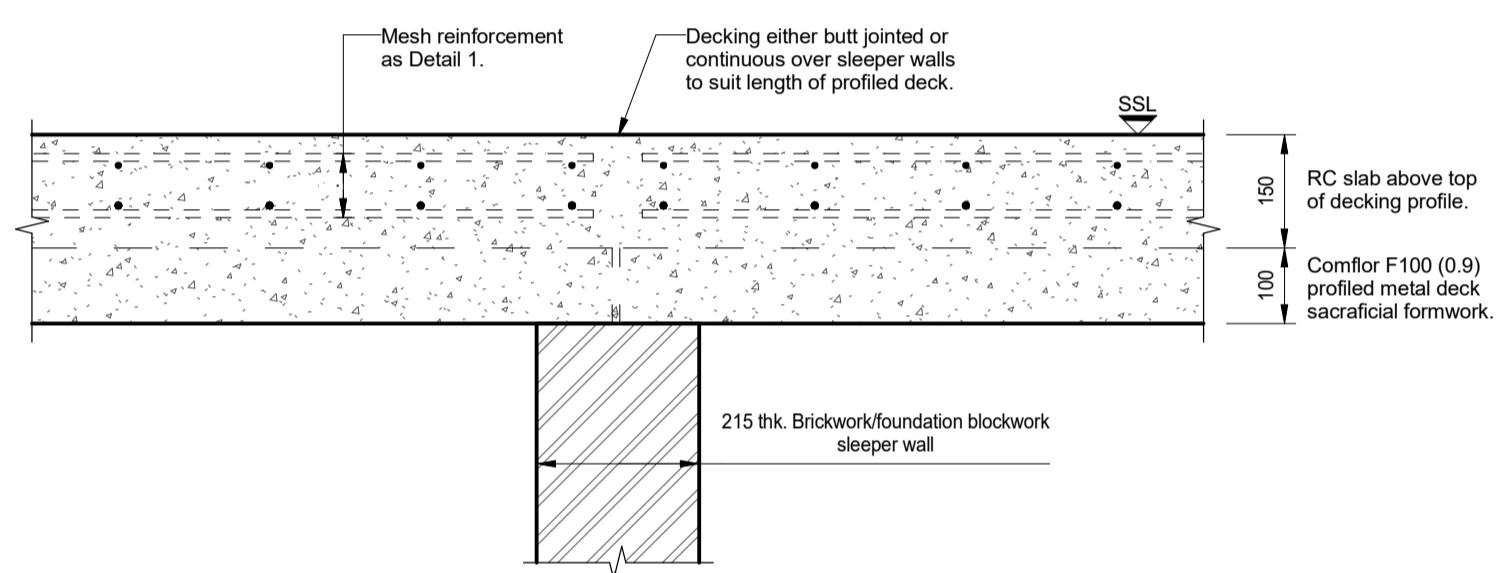
Section 2-2



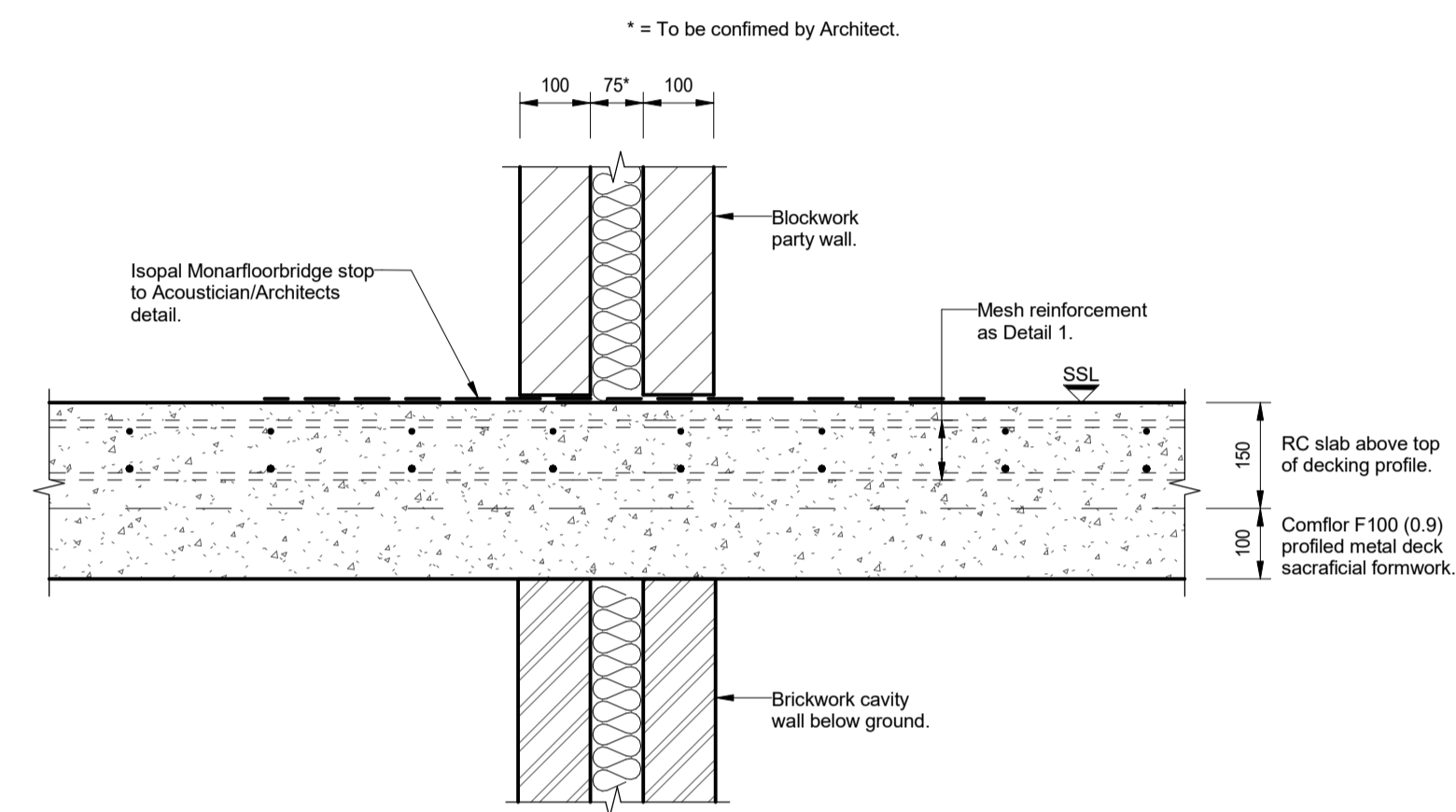
Detail 3: Proposed Bearing onto Sleeper Wall Off Existing Foundation
scale 1 : 10



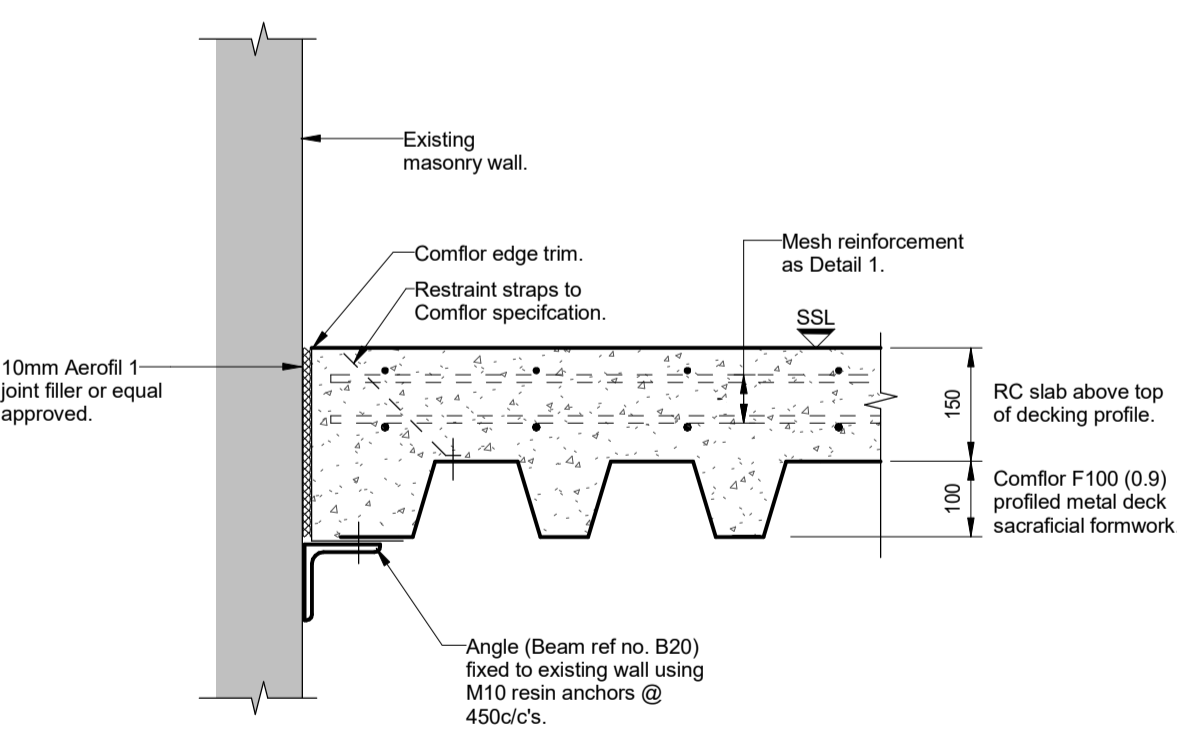
Detail 4: Proposed Slab Bearing at Openings in Wall
scale 1 : 10



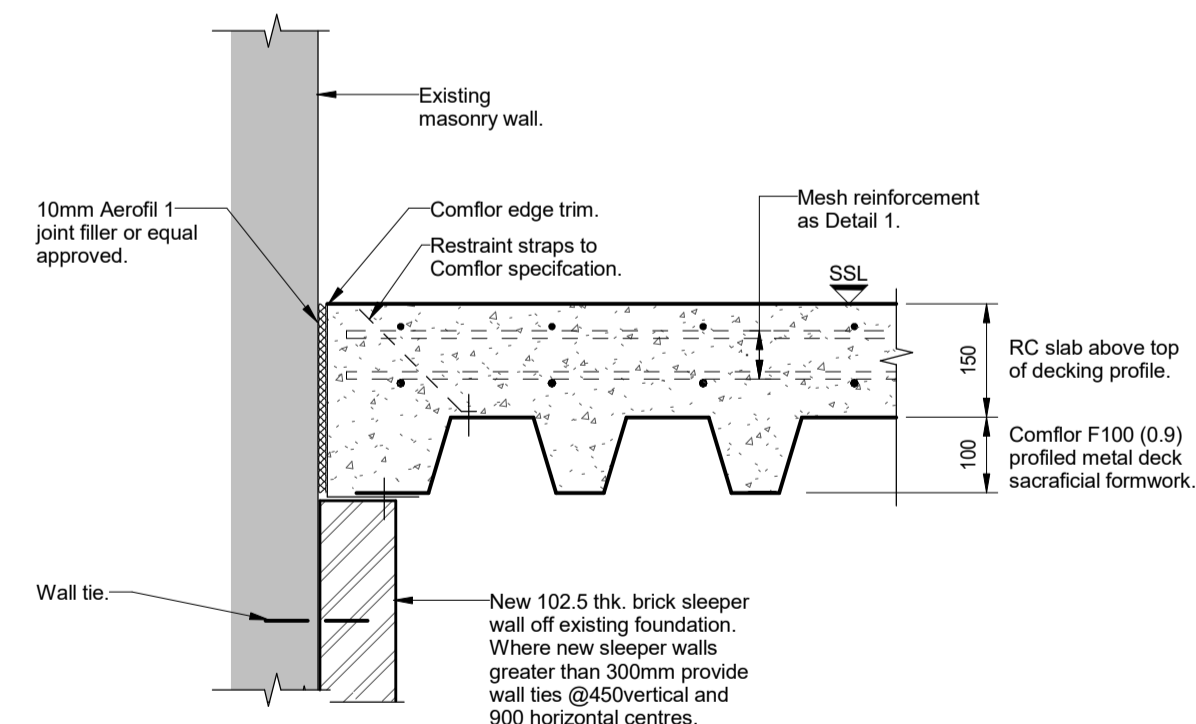
Detail 5: Proposed Slab Bearing on Sleeper Wall
scale 1 : 10



Detail 6: Proposed Slab Bearing at Party Wall
scale 1 : 10



Detail 7: Typical Edge Detail Where Floor Spans Parallel to Walls (supported on Angle Bracket)
scale 1 : 10



Detail 8: Typical Edge Detail Where Floor Spans Parallel to Walls (supported on new sleeper wall)
scale 1 : 10

- General Notes**
1. Drawings shall be referred to for structural work only unless otherwise stated and read in conjunction with Architect's, Service Engineer's and Sub-Contractor's drawings.
 2. The Contractor shall check all levels and dimensions, any errors or omissions are to be reported at once to the Engineer.
 3. For General Notes refer to no. 9100-DRG-99YY-GN002.

NOTE
1. End & side laps to mesh to be minimum of 450mm
2. Finishes & damp proofing to architects details.

REV	DATE	DESCRIPTION	BY	CHKD
-	28.07.16	First Issue	DA	TP

FOR TENDER



TITLE:
Generic Details for Non-Composite Metal Deck RC Floor

PROJECT:
Project No:11581
Kidderpore Avenue

SCALE: A1@ 1:10 DATE: July 16 DRAWN: DA CHKD: Checker

DRG NO. REV.

9100-DRG-00YY-DE008 -

