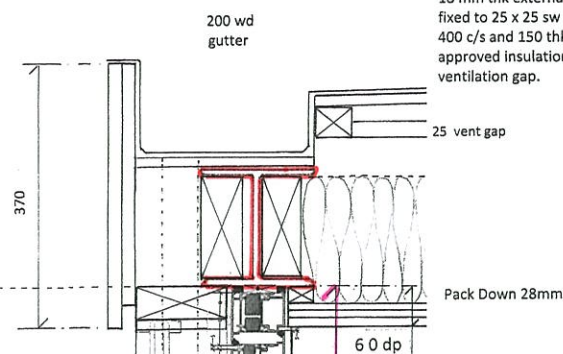


DETAIL 7 (1:5)

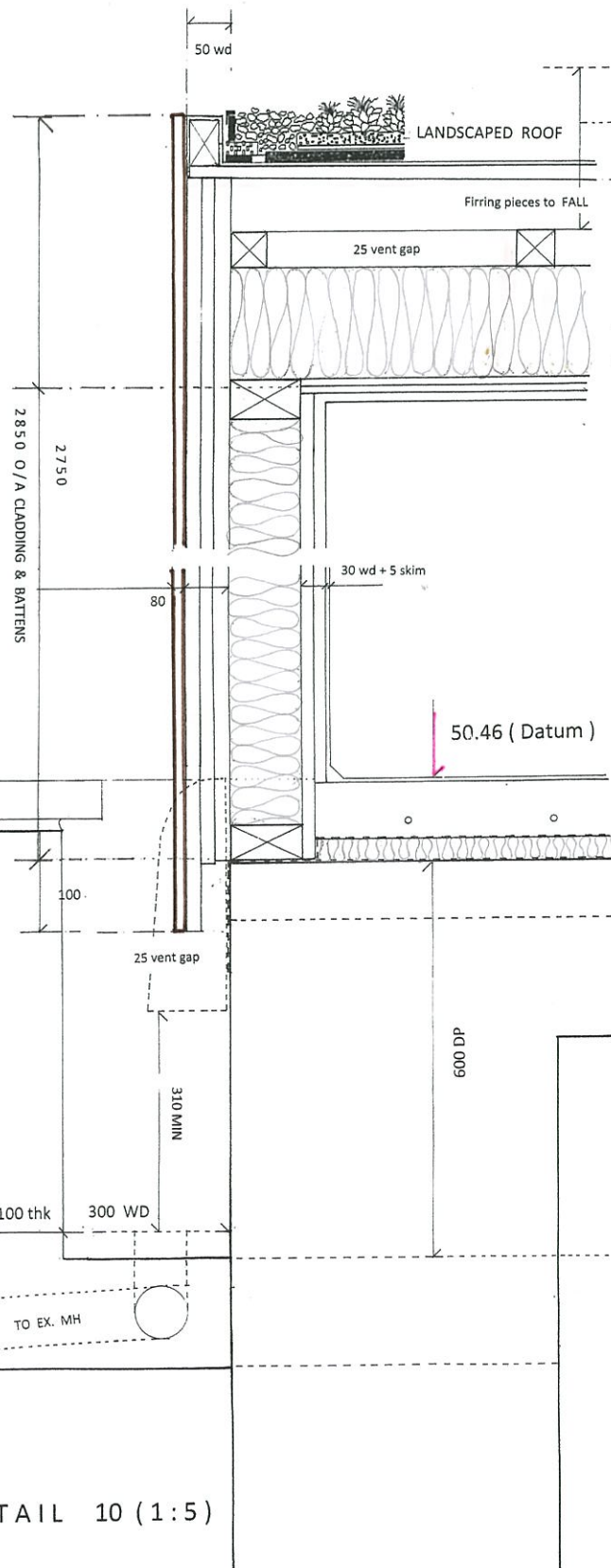


COLD ROOF CONSTRUCTION (U Value 0.18 W/M2K)
 Landscaped Roof with nominal depth of 100mm (MIN) on EPDM anti-root Roofing membrane by certified installer on 18 mm thk external ply laid to fall on 50 wd firring pieces fixed to 25 x 25 sw cross battens over 50 x 225 dp joists @ 400 c/s and 150 thk 'KINGSPAN KOOLTHERM K7' or similar approved insulation infill between joists with minimum 50 mm ventilation gap.

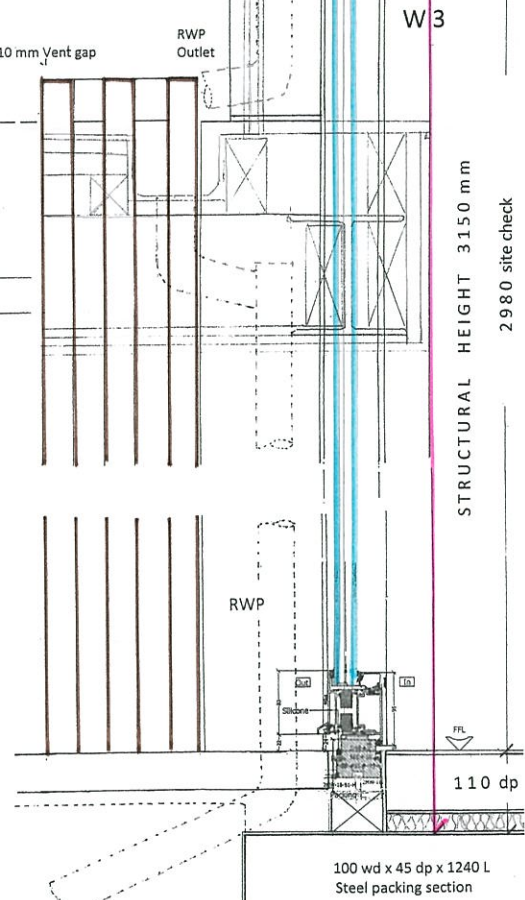
EXTERNAL WALL CONSTRUCTION (U value 0.28 W/M2K)

25 x 50 wd HW timber slat battens vertically fixed to 20 thk x 200 wd T & G treated timber cladding fixed to 18 mm thk external ply cladding with vapour barrier fixed to 25 x 50 wd vertical battens providing 25 mm ventilation gap to 50 x 100 dp stud/w with noggings and fully filled with 100 thk 'KINGSPAN KOOLTHERM K12' or similar approved. Internal cladding to consist of 2 layers of 9mm thk ply with staggered joints and 12mm thk plasterboard with plaster skim finish.

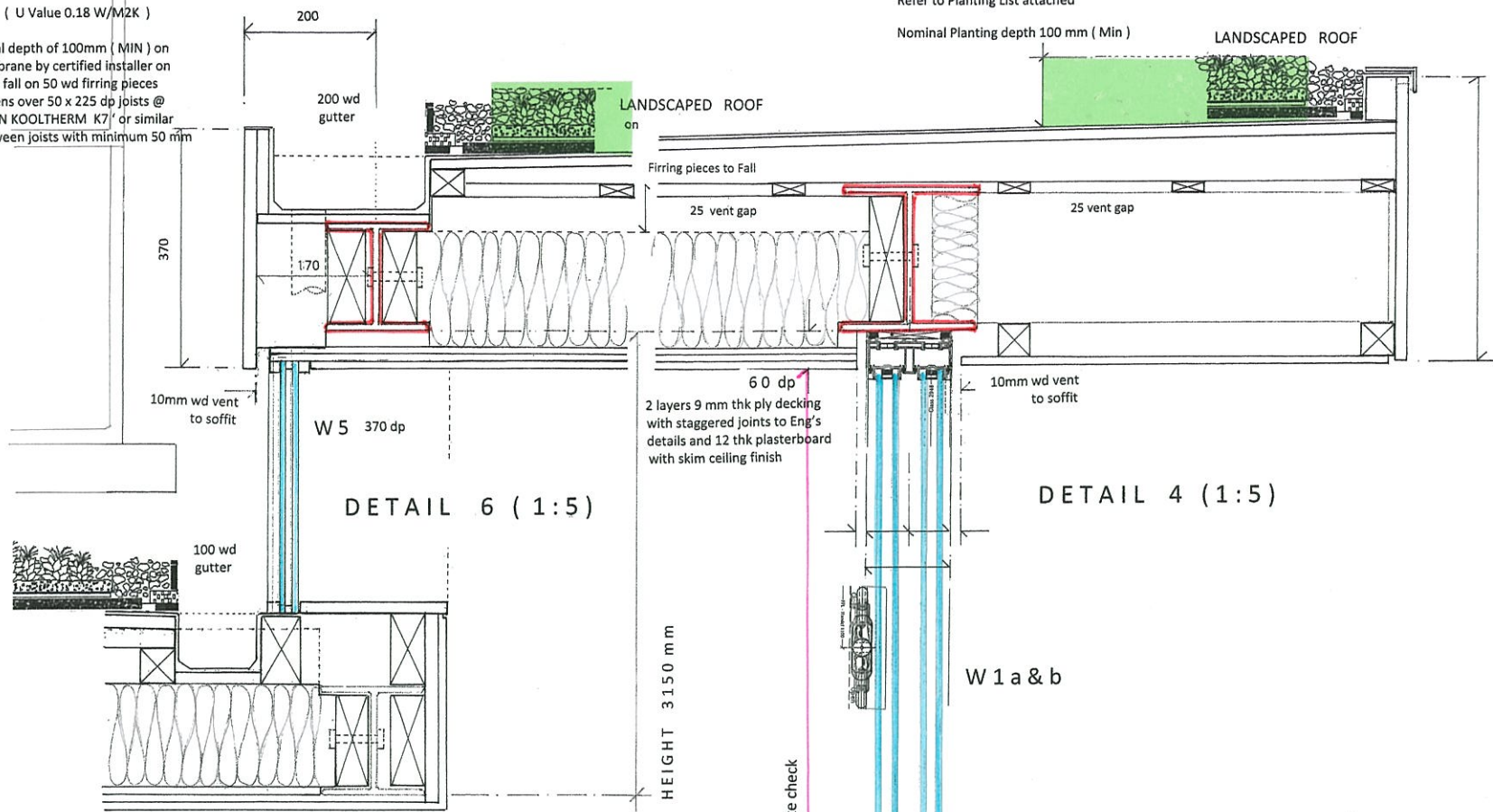
DETAIL 9 (1:5)



DETAIL 8 (1:5)



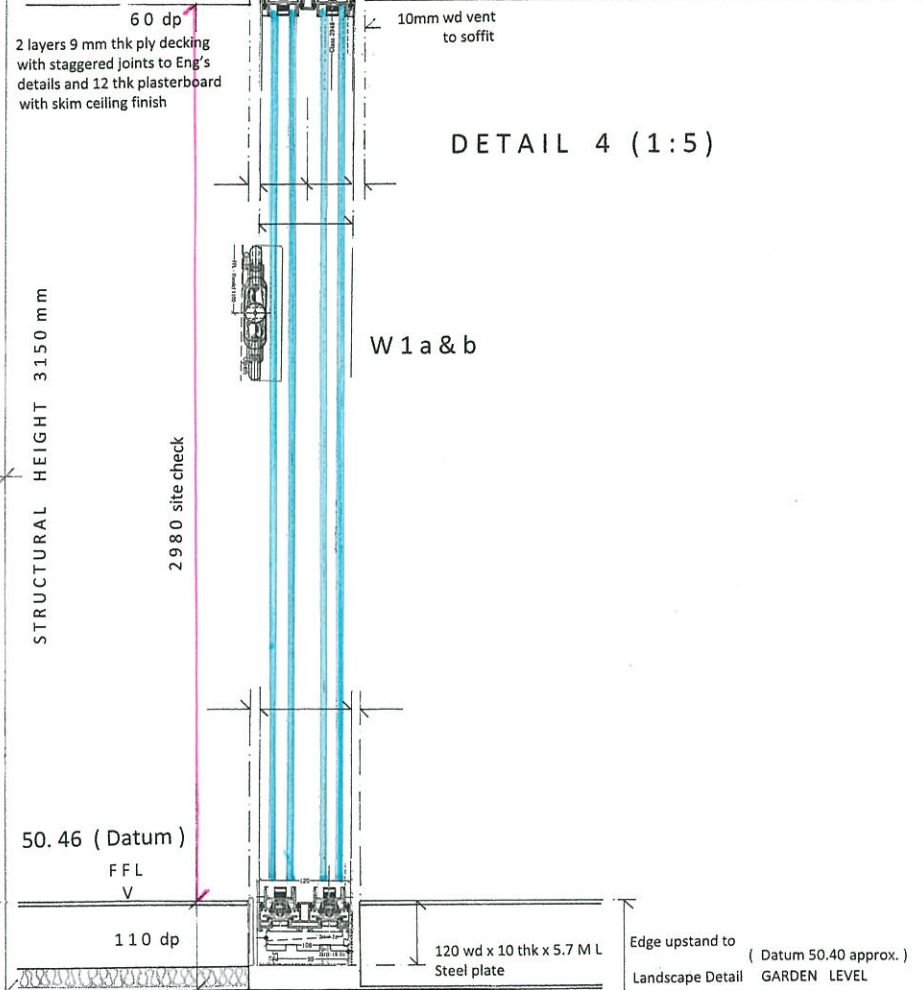
DETAIL 6 (1:5)



ROOF PLAN 1:50



DETAIL 4 (1:5)



DETAIL 5 (1:5)

