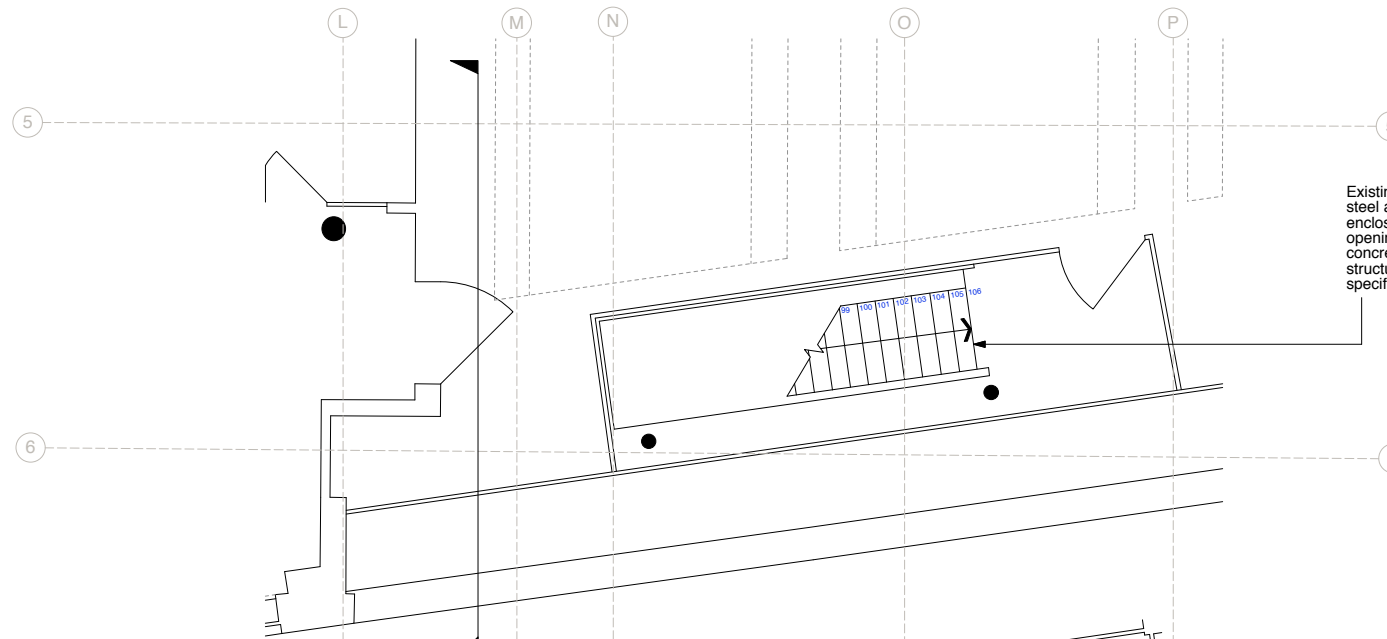


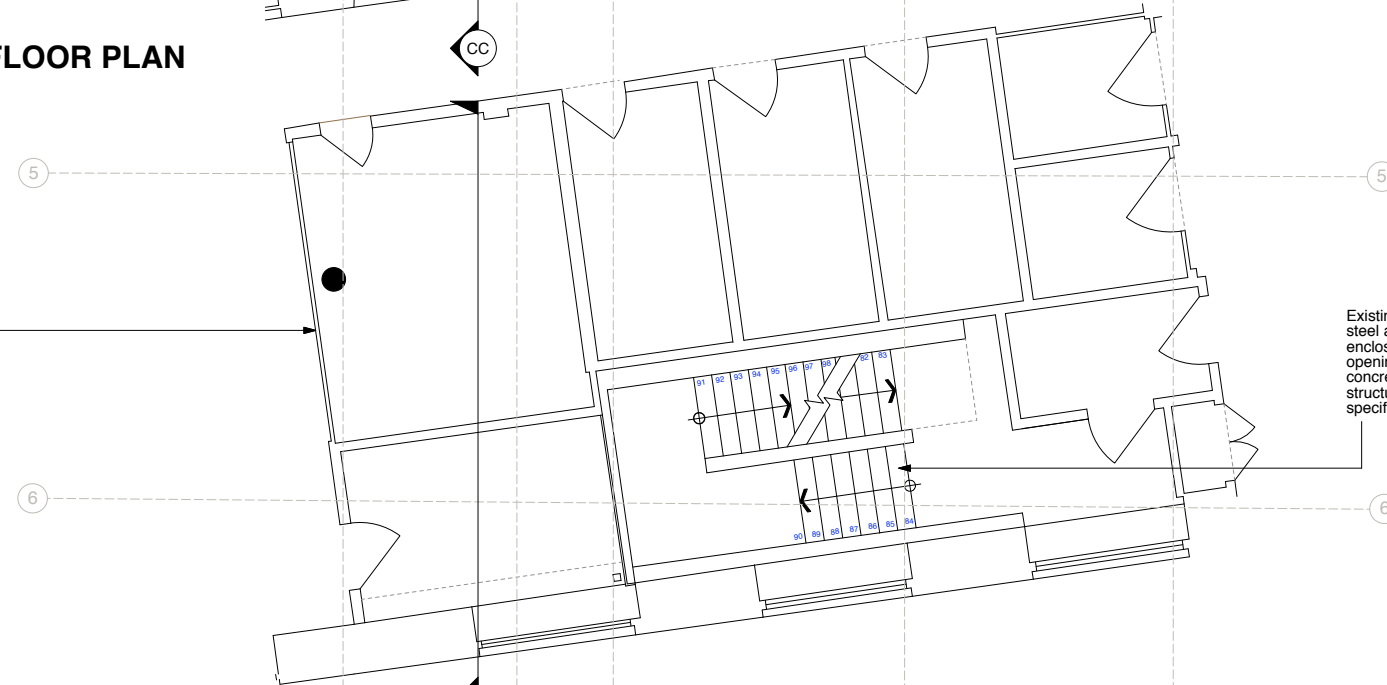
KEY PLAN



FIFTH FLOOR PLAN

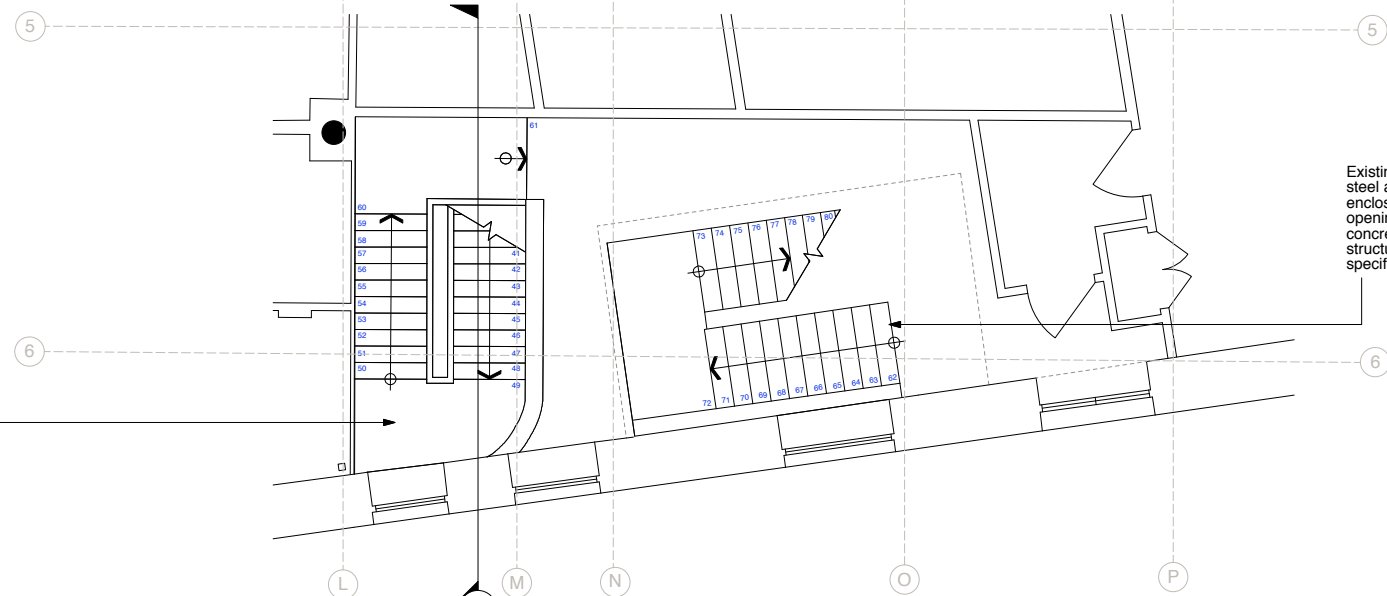
Existing modern construction steel stair, steel and glass balustrade and enclosure to be removed with the floor opening (modern composite deck and concrete) in-filled in accordance with the structural engineer details and specifications

All modern drylining partitions installed as part of the CAT B fitout by previous tenant are to be removed, leaving all surfaces and junctions clean and tidy



FOURTH FLOOR PLAN

Existing modern construction steel stair, steel and glass balustrade and enclosure to be removed with the floor opening (modern composite deck and concrete) in-filled in accordance with the structural engineer details and specifications



THIRD FLOOR PLAN

Existing escape stair to be retained. Upper floors escape stair to be linked from above

Existing modern construction steel stair, steel and glass balustrade and enclosure to be removed with the floor opening (modern composite deck and concrete) in-filled in accordance with the structural engineer details and specifications

**PLANNING**

**EXISTING SECONDARY ESCAPE STAIR PLANS**



rev	date	notes
<b>gpod</b> architecture & interior design		
CLIENT	PEC NEAL LTD, C/O CBRE GI	
PROJECT	SEVEN DIALS WAREHOUSE LONDON WC2	
TITLE	EXISTING SECONDARY ESCAPE STAIR PLANS	
DWG NO	527-EX.18	REV
DRAWN BY	SF	SCALE 1:50@A11
CHECKED BY	DS	DATE Oct 2016
T: 020 7549 2133	Ural 1	9a Dullington Street
F: 020 7549 2144		Clarendonville
E: <a href="mailto:info@gpodlondon.com">info@gpodlondon.com</a>		London EC1V 0BQ
W: <a href="http://www.gpodlondon.com">www.gpodlondon.com</a>		
<small>This drawing is the copyright of gpod london ltd. Not to be reproduced, retained or disclosed to any unauthorised person without written permission. Do not scale of this drawing. All indicated dimensions to be checked and verified on site by the contractor before commencement of any fabrication drawing or work whatsoever on site. Report any discrepancies to the Architect immediately. Drawings to be used in conjunction with relevant drawings and specification.</small>		
FILE NAME	PRINT SIZE	A1