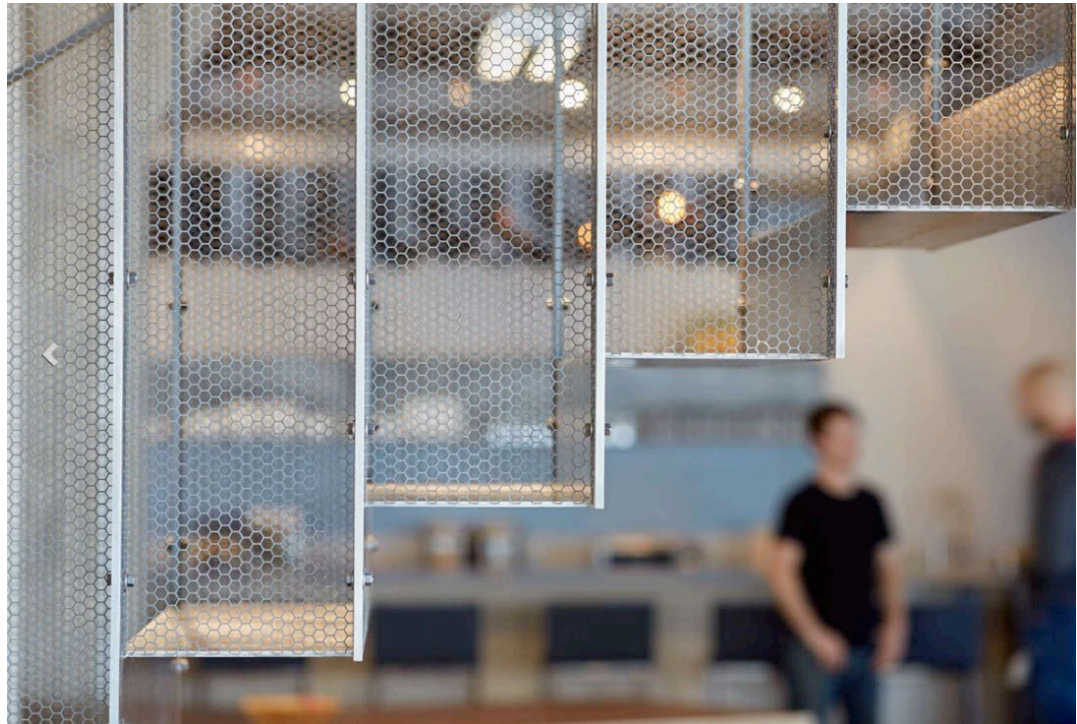


KEY PLAN



DETAIL Feature stair mesh infill detail

Existing glass lantern and structure to be retained.

Additional structural support proposed to match that of the existing CHS in accordance with structural engineer's specification to support suspended staircase.

All existing and proposed structure to be repainted in Matt Silk, colour: Pure White (RAL 9016).

LED track lights to be mounted on existing steel structure within glass lantern to provide adjustable flood lighting.

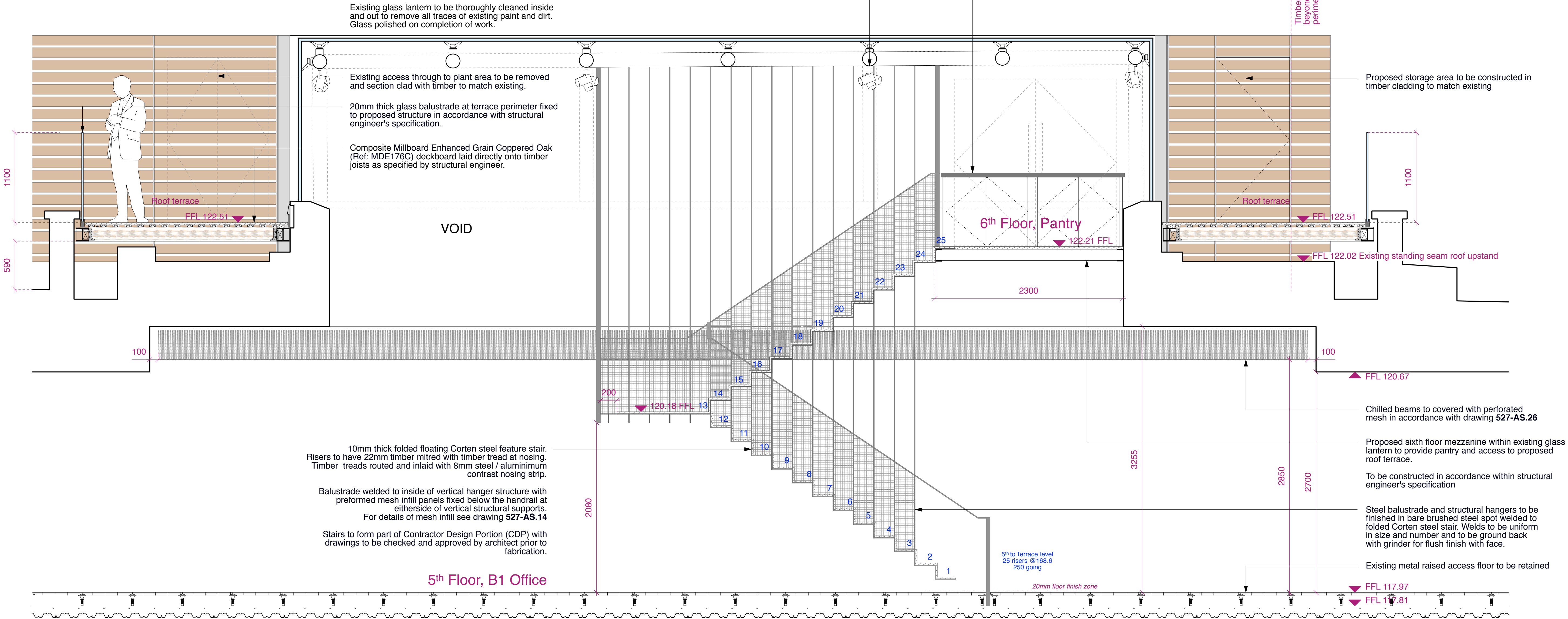
Roof terrace pantry with hot & cold water supply, waste and power. Supply and install micro, hideaway tea point unit bespoke size (approx width 2.2m), finish in Tobacco Oak based on ITH460 model, by John Strand (Tel: 020 89306006).

Pantry to include;

- Bi-fold doors.
- Stainless steel single lever mixer tap, sink and drainer with matching backboard.
- 2x Integrated fridges.
- 1x Integrated narrow dishwasher.
- 1x waste bin.
- 1x Microwave.
- Shelves, carcass and core to match finish, Tobacco Oak
- No hob or extractor are need.

Connect unit to hot/cold water supply and drainage waste in accordance with M&E engineer's details and specifications.

Timber plant enclosure to be extended beyond existing line to be square with perimeter extent



All finishes and surface materials to be applied and or laid in accordance with the manufacturer's specifications and appropriate BS standards.

PLANNING

rev.	date	notes
This drawing is the copyright of gpad london ltd. Not to be reproduced, retained or disclosed to any unauthorised person either wholly or in part without written permission. Do not scale off this drawing. All indicated dimensions to be checked and verified on site by the contractor before commencement of any fabrication drawings or work whatsoever on site. Report any discrepancies to the Architect immediately. Drawings to be read in conjunction with relevant drawings and specification. © gpad London Ltd.		

PROJECT			
SEVEN DIALS WAREHOUSE LONDON WC2			
CLIENT			
PEC NEAL LTD, C/O CBRE GI			
SCALE	1:25 @ A1	DATE	OCT 2016
DWG BY	SF	REV.	
CHKD.	DS	DWG NO.	527-AS.33

DRAWING TITLE	
PROPOSED TERRACE STAIR SECTION EE	
 architecture & interior design	
T: 020 7549 2133 F: 020 7549 2144 E: info@gpadlondonltd.com W: www.gpadlondonltd.com	
Unit 1 9a Dallington Street Clerkenwell London EC1V 0BQ	