



**EARLHAM ENTRANCE
CLOSE UP ELEVATION**
(Scale 1:50)

KEY

1. Original brick facade.
2. Black paint to be removed from brick facade. Brick and mortar joints returned to original condition. Black paint to be removed by a specialist using a method that does not result in harm to the historic brickwork below. A non-abrasive removal method should be specified to protect the brick fireskins. The exact method of removal it to be established by conducting test trails carefully chosen in consultation with a specialist
3. Single glazed modern doors removed to be replaced with heritage style metal double glazed doors, with fixed side and top panes
4. Stone plinth to be maintained.
5. Stone surround to be maintained.
6. Modern windows to be removed and replaced with heritage style metal fixed glazed window, to match all the other ground floor level windows on the Earlham Street elevation towards Neal Street. See precedents on Design Statement for details.
7. 3no. metal framed projecting signs, internally illuminated (only letters illuminated) above the main entrance doors.
8. Existing dry riser inlet box to be renewed with black powder coated steel cover.

Metal framed, projecting internally illuminated sign. Frame fixed to brick using anchor bolts (sized by fabricator). Frame finish: Powder coated in graphite black RAL 9011. Opal acrylic panels to both sides, with the letters/logo illuminated only. Background is masked with solid (blackout) external grade vinyl film, finished in graphite black RAL 9011. See drawing no. 527-AS.31 for details

BELGO RESTAURANT
Fire exit
(No Change)

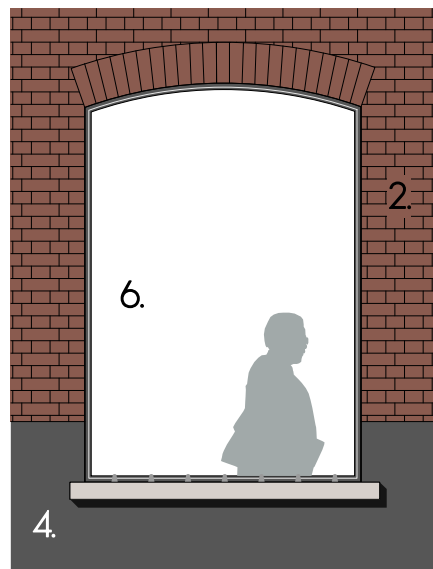
44 EARLHAM STREET
Studio B1 Office

42 EARLHAM STREET
Warehouse B1 Office

SEVEN DIALS CLUB
Entrance

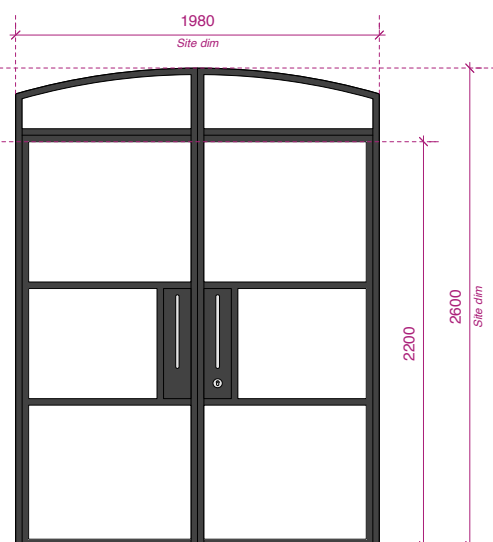
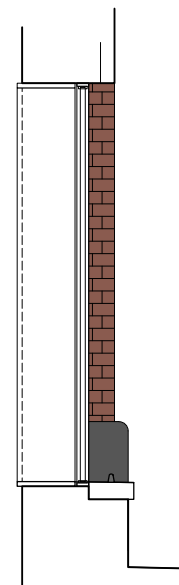
AREA OF ALTERATIONS AT GROUND FLOOR
(Street level)

Heritage style steel window frame with double glazed pane to existing opening. Ref: Secco Metal OS2 system by Wrightstyle Ltd. Frame finish in RAL 9011 Graphite Black. Existing internal window opening to be lined with 25mm softwood, painted in Dulux Trade, Satinwood; Brilliant White Existing concrete window sill to be retained. Stainless steel studs to be installed Ref: KSS/35 supplied by Kent Stainless Ltd

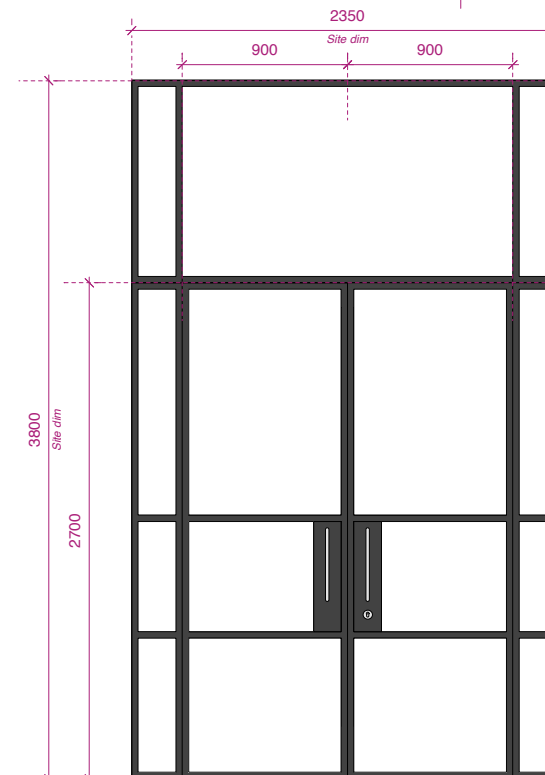


GROUND FLOOR WINDOW DETAIL
(Scale 1:20)

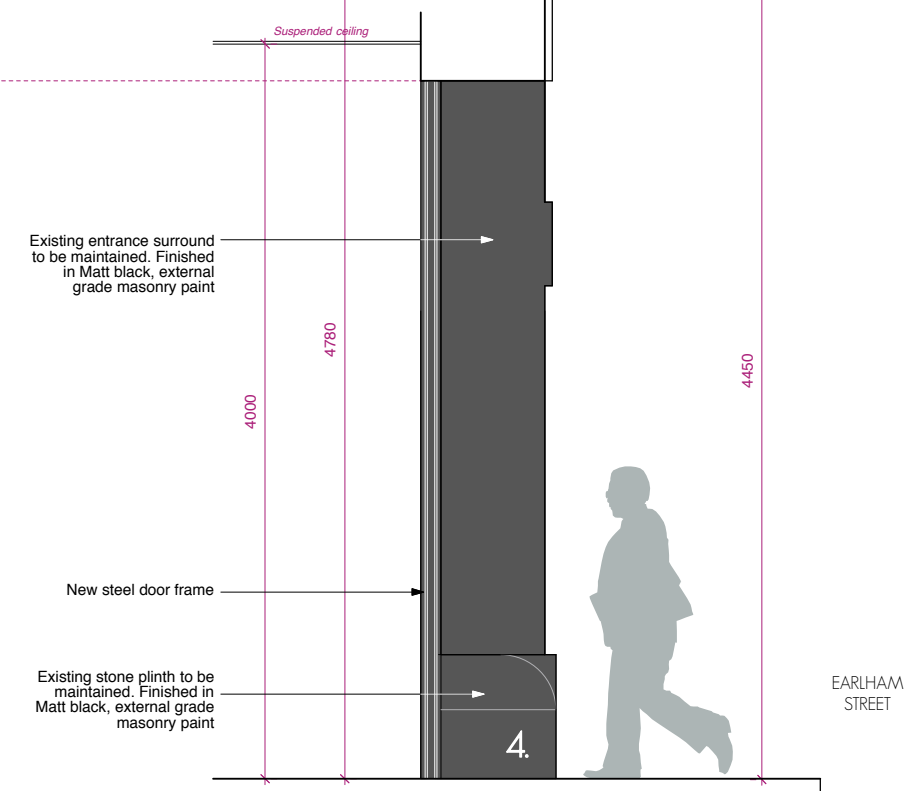
Heritage style steel door frame with double glazed panes to existing opening. Ref: Secco Metal OS2 system by Wrightstyle Ltd. Frame finish in RAL 9011 Graphite Black.
Hardware:
(To be confirmed by Supplier and approved by Architect)
Inward opening door hinges supplied as part of the door system, Euro key lock, door closers, flush bolt (LHS) pull handles & internal overhead maglock inked to building management access control and entry system in accordance with M&E Engineer's specifications



SD STUDIO ENTRANCE DOOR
(Scale 1:20)



SD WAREHOUSE ENTRANCE DOOR
(Scale 1:20)



PROJECTING SIGN DETAILS
(Scale 1:20)



PRELIMINARY

© gpad london ltd.

PROJECT		SEVEN DIALS WAREHOUSE LONDON WC2		DRAWING TITLE		EARLHAM STREET ENTRANCE FACADE ALTERATIONS	
CLIENT		PEC NEALE LTD		SCALE		1:50 & 1:20 @ A1	
DATE		OCT 16		DWG BY		SF / DS	
CHECKED		DWG NO.		REV.		527-AS.29	
<small>This drawing is the copyright of gpad london ltd. Not to be reproduced, retained or disclosed to any unauthorised person either wholly or in part without written permission. Do not scale off this drawing. All indicated dimensions to be checked and verified on site by the contractor before commencement of any fabrication drawings or work whatsoever on site. Report any discrepancies to the Architect immediately. Drawings to be read in conjunction with relevant drawings and specification.</small>				T: 020 7549 2133 F: 020 7549 2144 E: info@gpadlondonltd.com W: www.gpadlondonltd.com			
				Unit 1 9a Dollington Street Clerkenwell London EC1V 0BQ			